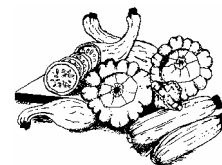





Summer Squash Marketing Fact Sheet

<http://www.uky.edu/Ag/HortBiz/>



Market Notes

-  Zucchini, yellow crookneck, and yellow straightneck squash make up the bulk of fresh summer squash shipments in the United States
-  Southern areas favor yellow crookneck squash consumption, while northern areas tend to favor yellow straightneck squash
-  Value of U.S. fresh market squash production rose 13 percent in 2004, topping \$222 million

Selected Fresh Market Squash Production By State 2001-2004

(1,000 cwt.)

State	2001	2002	2003	2004
California	1,520	1,501	1,463	1,575
Florida	1,392	1,500	1,300	1,339
Georgia	988	1,428	1,244	1,150
Michigan	1,278	1,564	1,178	1,120
New Jersey	466	455	314	327
New York	624	697	874	943
North Carolina	390	380	281	300
Ohio	204	156	168	154
Oregon	503	695	396	461
South Carolina	154	143	132	142
Tennessee	51	115	79	95
Texas	235	158	256	150

Source: USDA/NASS

2004 Kentucky Yellow Crookneck Squash Breakeven Prices

	-----yield per acre-----							
5/9 Bu. Boxes	700	800	900	950	1000	1,050	1,100	1,200
Price*	\$7.32	\$6.54	\$5.94	\$5.69	\$5.46	\$5.17	\$5.07	\$4.74

* Price required for \$0 return to land, capital, and management in 2003 KY Commercial Vegetable Updates

Information Sources

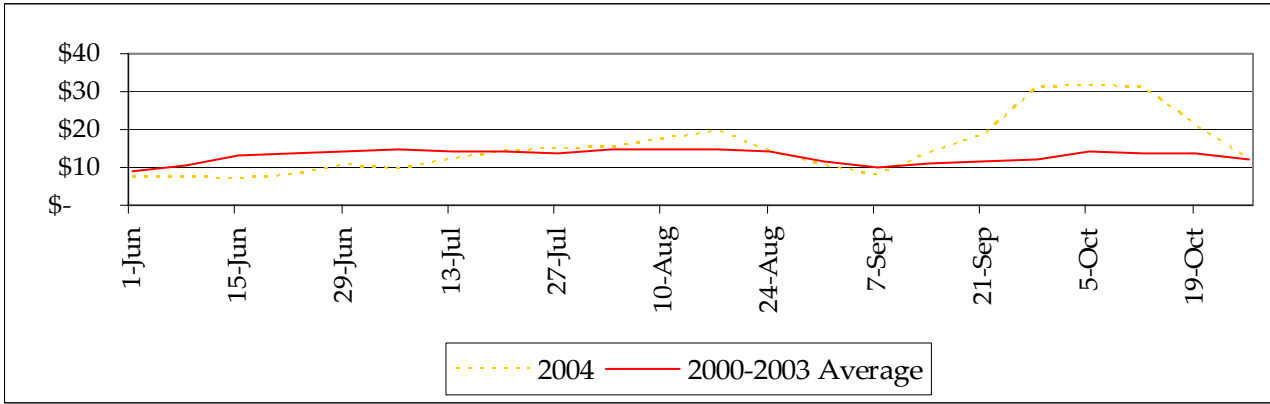
USDA Vegetable and Melons Report
UK Horticulture Budgets

<http://www.ers.usda.gov/publications/vgs/>
<http://www.uky.edu/Ag/HortBiz/pubs.html>

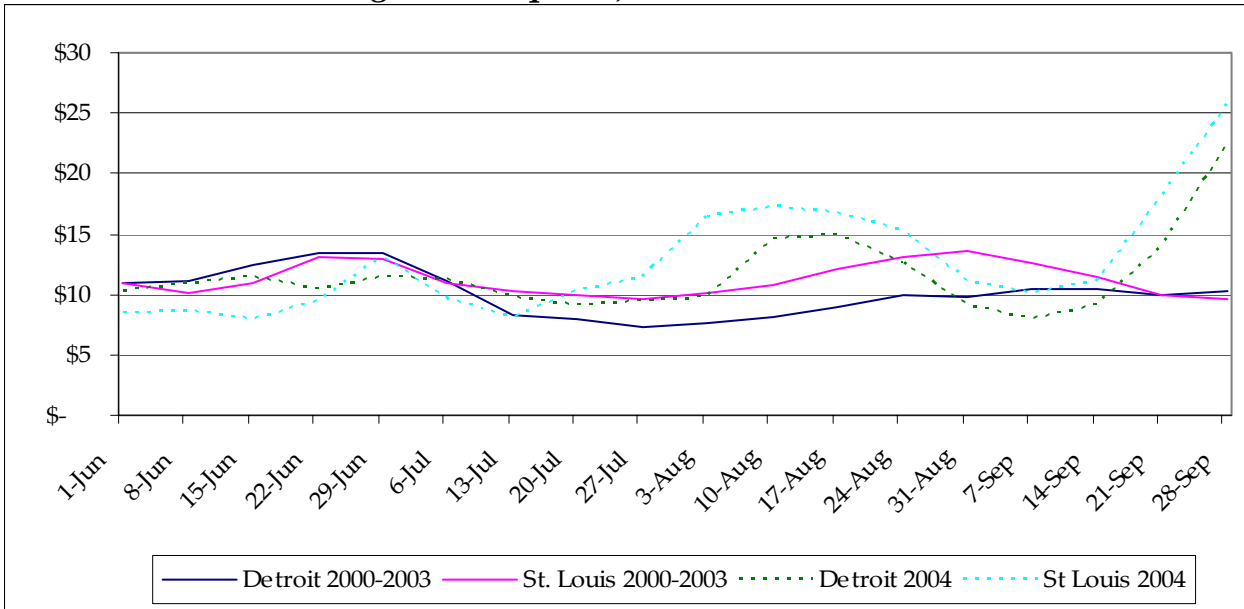
Terminal Market Prices

Price data available at: <http://mids.ifas.ufl.edu/>

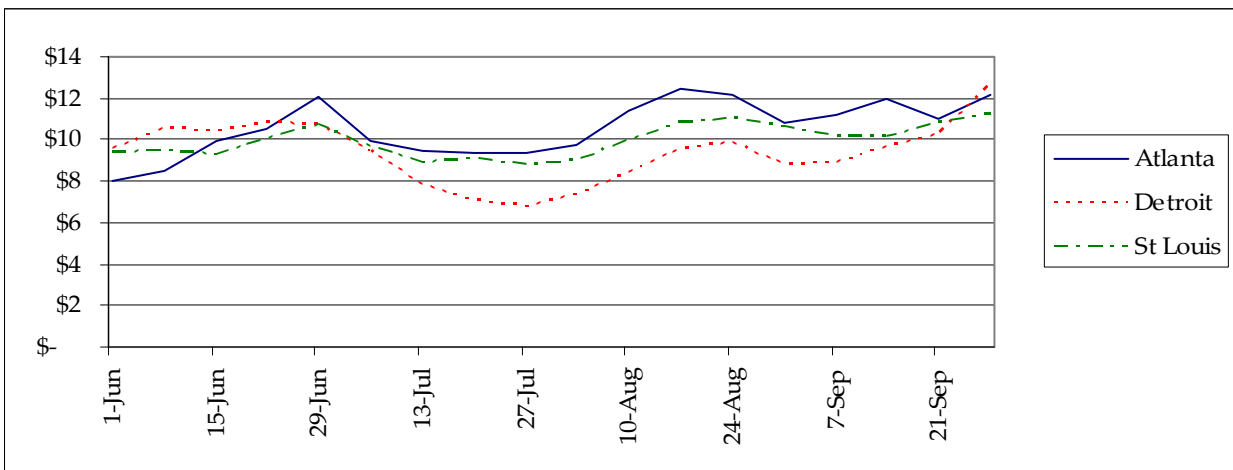
1/2 & 5/9 bu. Yellow Crookneck Squash, Atlanta Terminal



1/2 & 5/9 bu. Yellow Straightneck Squash, Detroit and St. Louis Terminals



1/2 & 5/9 bu. Zucchini Squash, 2000-2004 Terminal Market Weekly Median Prices



Prepared by Matt Ernst (mernst@uky.edu) and Tim Woods (tawoods@uky.edu), University of Kentucky Department of Agricultural Economics, 400 Charles E. Barnhart Building, Lexington, KY, 40546-0276, Phone 859-257-5762, Fax 859-323-1913.
<http://www.uky.edu/Ag/AgEcon>

Educational programs of the Kentucky Cooperative Extension Service serve all people regardless of race, color, age, sex, religion, disability, or national origin.