



# Fresh Market Bell Pepper Fact Sheet

<http://www.uky.edu/Ag/HortBiz/>

## Production

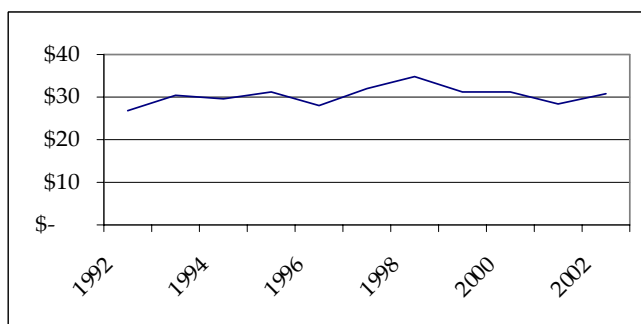
- Bell peppers continue to be one of the most popular and profitable vegetable crops for KY producers
- Peppers and tomatoes, mostly hothouse production, now make up more than 2/3 of Canada's fresh vegetable exports to the United States

### U.S. Fresh Bell Pepper Production Data

	1997	1998	1999	2000	2001	2002	2003
Acres Harvested	56,200	56,680	56,820	62,080	57,780	53,800	55,400
Yield Per Acre (cwt)	266	257	274	272	285	291	297
Production (1,000 cwt)	14,959	14,556	15,562	16,879	16,494	15,668	16,479
Value per Cwt	\$ 32.06	\$ 34.80	\$ 31.09	\$ 31.46	\$ 28.71	\$ 29.64	\$ 30.65
Total Value (1,000 dollars)	479,512	506,610	483,807	531,018	473,557	464,401	505,159

Source: USDA/ERS

### Annual Bell Pepper Supply Point Prices (\$/cwt)



- Monthly f.o.b. shipping point prices for bell peppers are not summarized by the USDA
- 1998 average was high because of late harvest and demand considerations
- 2002 Prices projected to have remained above \$0.40

### Kentucky Fresh Market Green Bell Pepper Breakeven Prices

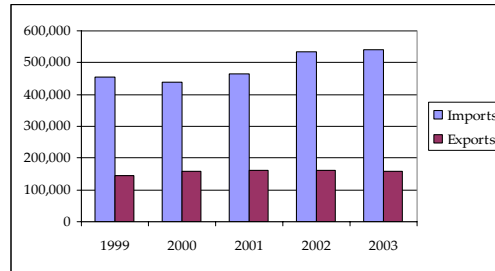
	yield per acre							
1 1/9 Bushel Boxes	1000	1100	1200	1300	1400	1500	1600	1700
Price*	\$7.31	\$6.77	\$6.33	\$5.95	\$5.62	\$5.34	\$5.10	\$4.88

\* Price required for \$0 return to land and management. Source: 2004 UK Vegetable Budget Updates

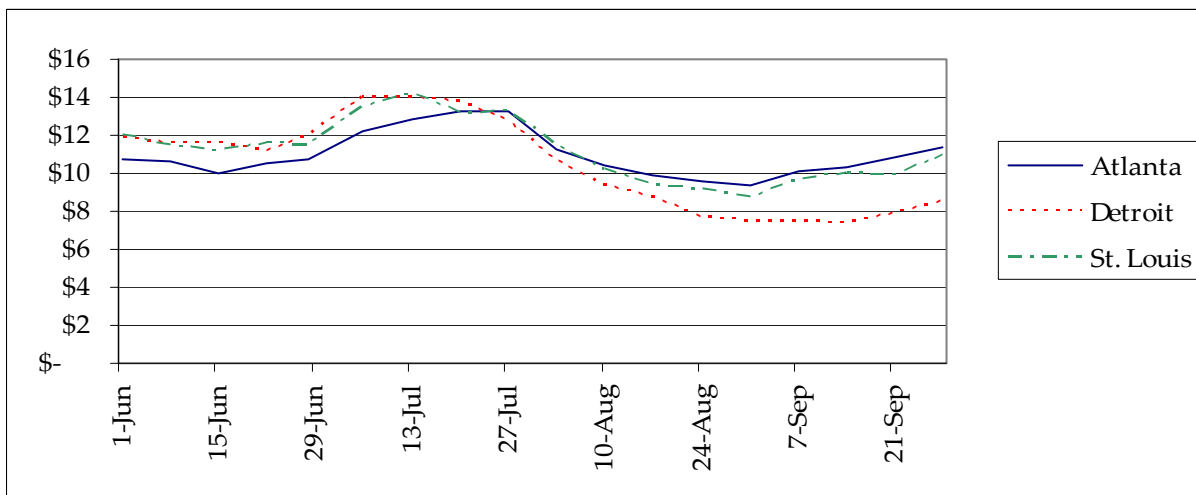
## TRADE DATA

- Canada accounts for 98% of U.S. bell pepper exports
- The bulk of U.S. imports come from Mexico
- Over 70% of Mexican imports come from grower-owned distributors. The hub for distribution is found in Nogales, AZ

**U.S. Green Bell Pepper Trade** (Quantity in 1,000 lbs.)



**Weekly Median Terminal Market Prices** (\$ per 1 1/9 bushel carton large green peppers)



Source: USDA/IFAS

## Information Sources

USDA Fresh Bell Pepper Commodity Highlight

<http://www.ers.usda.gov/Briefing/Vegetables/vegpdf/BellPepperHigh.pdf>

USDA Vegetable and Melons Report

<http://www.ers.usda.gov/publications/vgs/>

UF Marketing Information System

<http://mids.ifas.ufl.edu/>

UK Horticulture Budgets

<http://www.uky.edu/Ag/HortBiz/pubs.html>

NASS Vegetable Reports

<http://usda.mannlib.cornell.edu/reports/nassr/fruit/pvg-bban/>

Prepared by Matt Ernst (mernst@uky.edu) and Tim Woods (tawoods@uky.edu), University of Kentucky Department of Agricultural Economics, 400 Charles E. Barnhart Building, Lexington, KY, 40546-0276, Phone 859-257-5762, Fax 859-323-1913.  
<http://www.uky.edu/Ag/AgEcon>

*Educational programs of the Kentucky Cooperative Extension Service serve all people regardless of race, color, age, sex, religion, disability, or national origin.*