

# Peach Marketing Fact Sheet

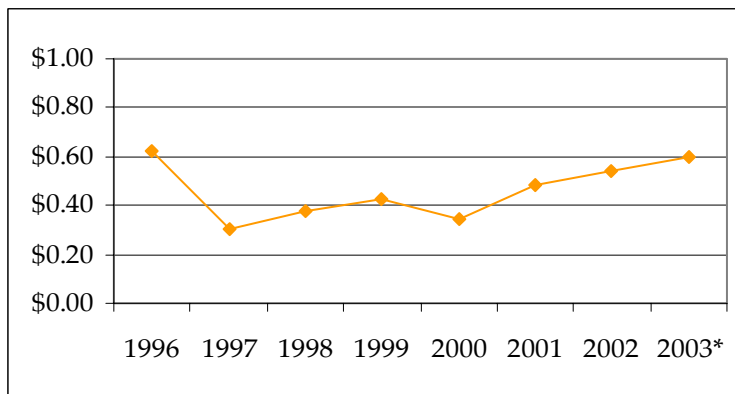
<http://www.uky.edu/Ag/HortBiz>

## U.S. Peach Production Data

	1998	1999	2000	2001	2002	2003
Bearing Acreage	159,200	155,500	151,200	147,500	146,400	145,500
Pounds Per Acre	14,945	16,098	16,874	16,324	17,316	17,313
Total Million Lbs Production	2,379	2,503	2,551	2,407	2,535	2,519
Cash Receipts Per Acre	\$ 2,732	3,091	3,111	3,275	3,333	3,124
Cash Receipts (\$1,000)	\$ 434,889	451,728	470,399	483,043	488,011	454,532

Source: USDA/ERS, NASS \*UK Estimates for 2003 based on ERS preliminary data

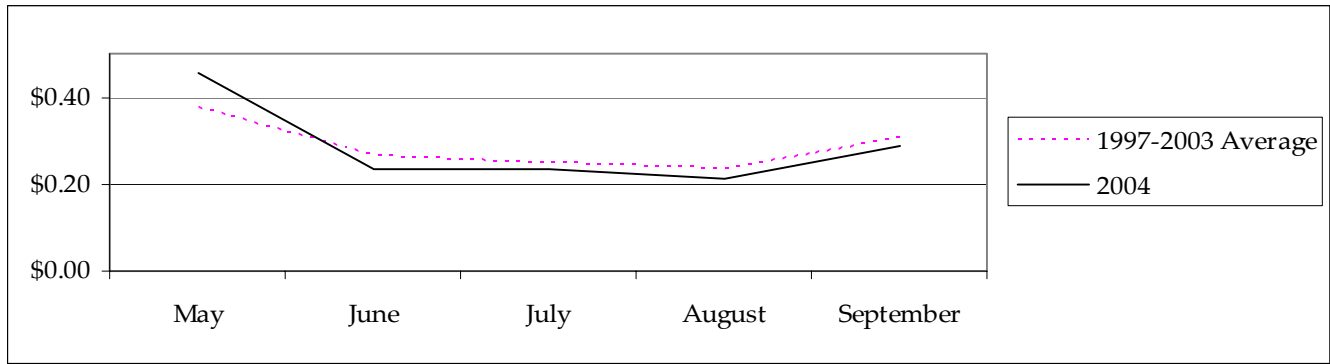
## Kentucky Peach Prices (per pound)



*Peach prices received by KY producers have increased steadily since 1996 due to strong markets and increased direct market peach sales.*

Source: USDA; \*NASS Noncitrus Fruits and Nuts 2003 Preliminary Summary

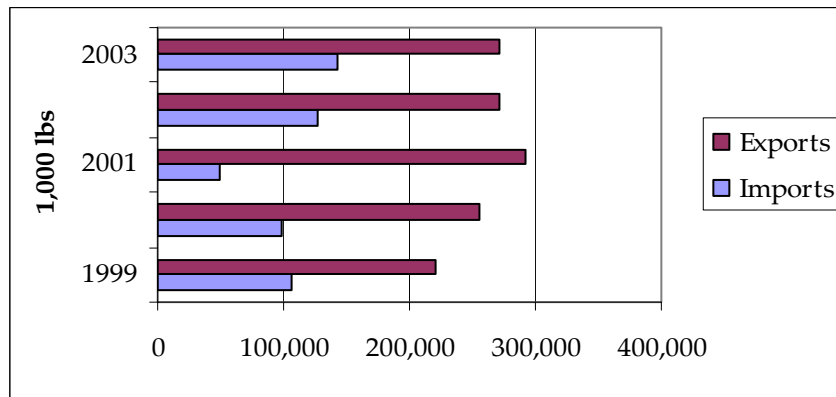
## Fresh Peaches: Monthly Prices Received By Growers



Source: USDA/ERS Fruit and Tree Nuts Situation and Outlook Yearbook, October 2003

## TRADE

### U.S. Fresh Peach Trade



Source: USDA/ERS Fruit and Tree Nuts Situation and Outlook Yearbook, October 2004

### Information Sources

USDA/ERS Fruit and Tree Nuts Situation and Outlook Yearbook

<http://www.ers.usda.gov/Briefing/FruitAndTreeNuts/>

U.S. Census of Agriculture

<http://www.nass.usda.gov/census/>

Prepared by Matt Ernst (mernst@uky.edu) and Tim Woods (tawoods@uky.edu), University of Kentucky Department of Agricultural Economics, 400 Charles E. Barnhart Building, Lexington, KY, 40546-0276, Phone 859-257-5762, Fax 859-323-1913.

<http://www.uky.edu/Ag/AgEcon>

*Educational programs of the Kentucky Cooperative Extension Service serve all people regardless of race, color, age, sex, religion, disability, or national origin.*