

Eggplant Marketing Fact Sheet

<http://www.uky.edu/Ag/HortBiz/>

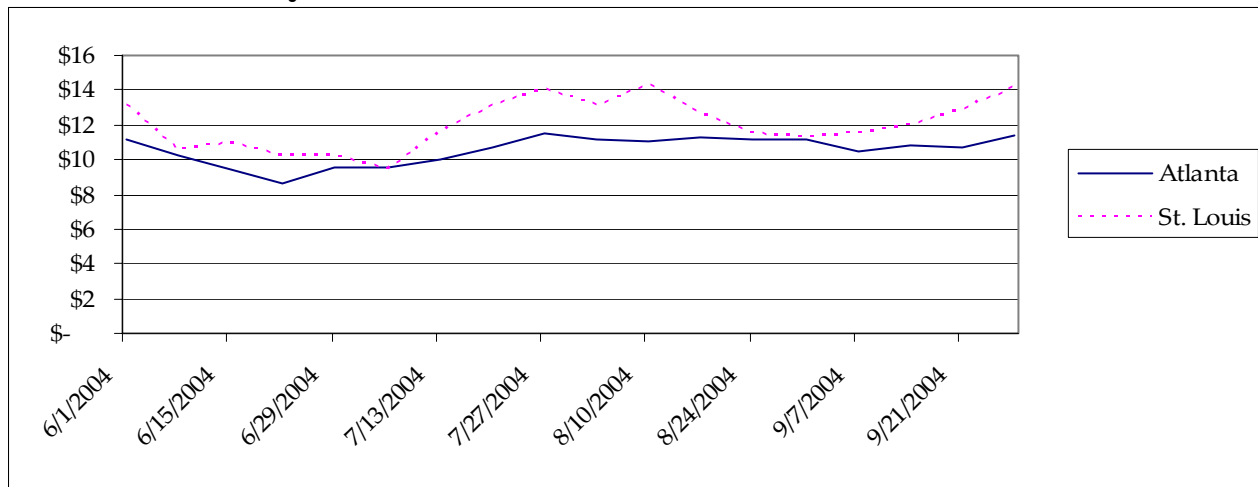


Production

	1997	1998	1999	2000	2001
Acres Harvested	3,300	3,200	2,800	6,350	5,830
Yield Per Acre (cwt)	240	240	254	260	291
Production (1,000 cwt)	793	768	712	1,654	1,694
Value per Cwt	\$23.90	\$28.53	\$30.19	\$26.05	\$25.07
Total Value (1,000 dollars)	\$18,980	\$21,912	\$21,492	\$43,085	\$42,471

Source: USDA/ERS

2002-04 Weekly Terminal Market Trends (\$ per 50 lb. carton medium eggplant)



Source: UF/IFAS Market Information System Weekly Median Prices

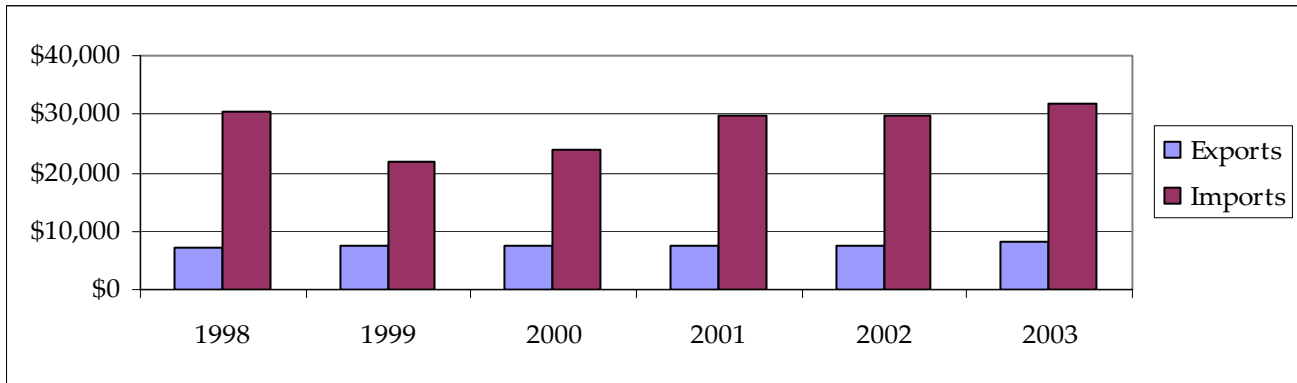
Kentucky Eggplant Breakeven Prices

	-----yield per acre-----							
	400	500	600	700	800	900	1000	1100
Breakeven price*	\$ 10.50	\$ 8.76	\$ 7.60	\$ 6.85	\$ 6.15	\$ 5.67	\$ 5.28	\$ 4.97

*Price required for \$0 return to land and management.

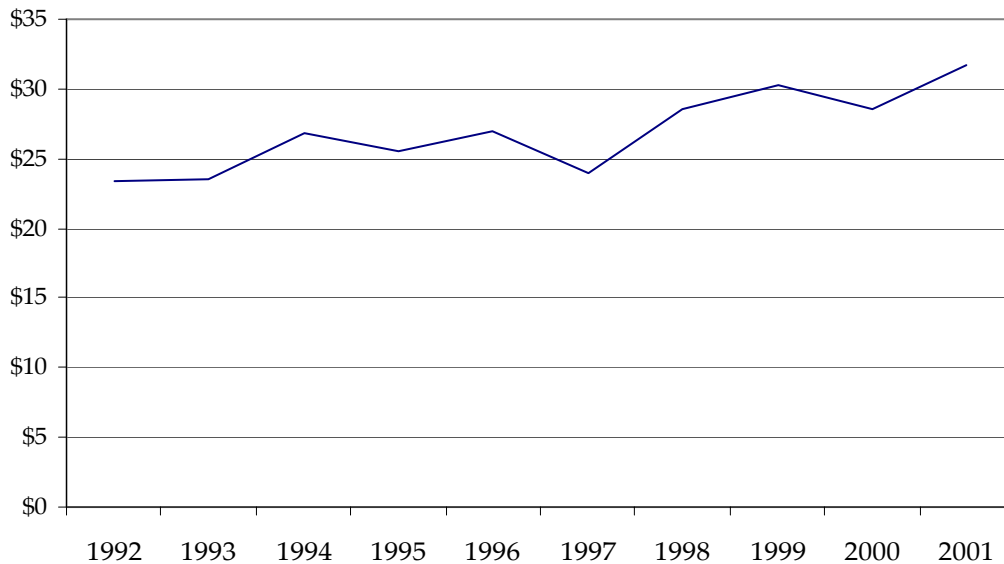
Source: 2004 UK Commercial Vegetable Budget Updates

U.S. Fresh Eggplant Trade



Source: USDA Vegetables and Melons Situation and Outlook Yearbook

Annual U.S. Eggplant Season-Average Price (\$/cwt.)



Source: USDA/ERS

Information Sources

USDA Vegetable and Melons Report

<http://www.ers.usda.gov/publications/vgs/>

UF Marketing Information System

<http://mids.ifas.ufl.edu/>

UK Horticulture Budgets

<http://www.uky.edu/Ag/HortBiz/pubs.html>

NASS Vegetable Reports

<http://usda.mannlib.cornell.edu/reports/nassr/fruit/pvg-bban/>

Prepared by Matt Ernst (mernst@uky.edu) and Tim Woods (tawoods@uky.edu), University of Kentucky Department of Agricultural Economics, 400 Charles E. Barnhart Building, Lexington, KY, 40546-0276, Phone 859-257-5762, Fax 859-323-1913.
<http://www.uky.edu/Ag/AgEcon>

Educational programs of the Kentucky Cooperative Extension Service serve all people regardless of race, color, age, sex, religion, disability, or national origin.