

Cabbage Marketing Fact Sheet

<http://www.uky.edu/Ag/HortBiz/>



Fresh cabbage sales have been spurred by fresh-cut coleslaw and the use of red cabbage in salad mixes. Fresh cut processing could be critical for Kentucky producers seeking added profitability from cabbage.

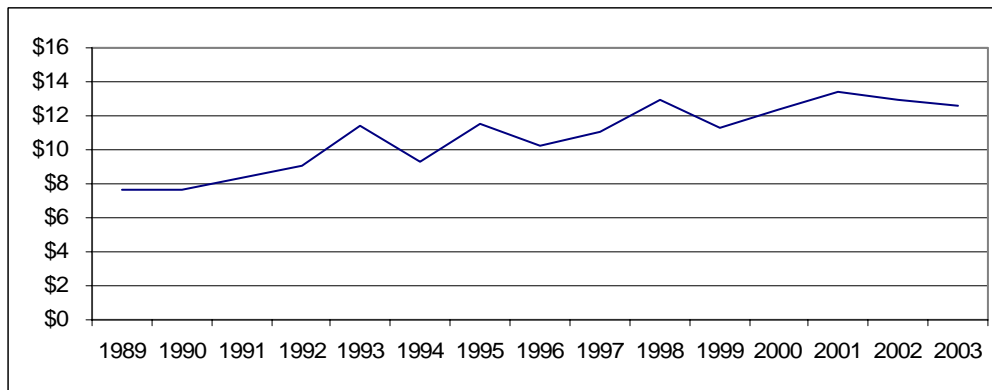
U.S. Fresh Market Cabbage Production

	1998	1999	2000	2001	2002	2003	2004*
Acres Harvested	75,630	73,800	76,890	77,030	75,680	73,950	74,500
Yield Per Acre (cwt)	314	293	333	331	320	302	309
Production (1,000 cwt)	23,773	21,635	25,623	25,460	24,227	22,364	23,000
Value per Cwt	\$ 12.71	\$ 11.03	\$ 12.07	\$ 13.06	\$ 12.71	12.38	12.61
Total Value (1,000 dollars)	302,143	238,624	309,171	332,554	307,856	276,775	290,000

Source: USDA/ERS

*UK Estimates for 2004 based on NASS production data and annual trends.

National Season Average Fresh Cabbage Prices (\$ per cwt.)



Source: USDA/ERS

Kentucky Fresh Market Cabbage Breakeven Prices

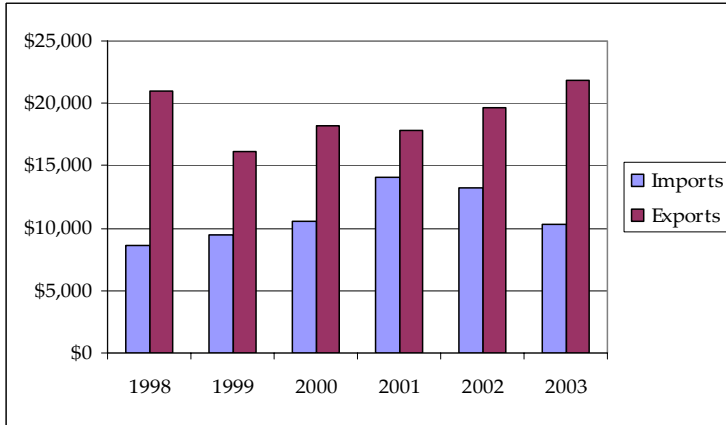
	-----yield per acre-----							
50-Pound Containers per acre	450	500	550	600	650	750	850	950
Breakeven price per 50 lbs.*	\$7.55	\$6.93	\$6.43	\$6.01	\$5.66	\$5.09	\$4.66	\$4.32

* Price required for \$0 return to land and management

Source: 2003 UK Commercial Vegetable Budget Updates

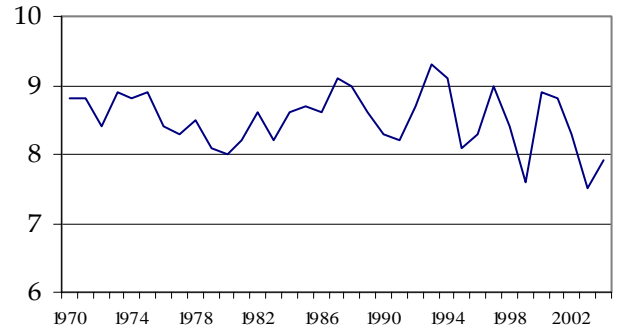
U.S. FRESH CABBAGE TRADE

(\$1,000)

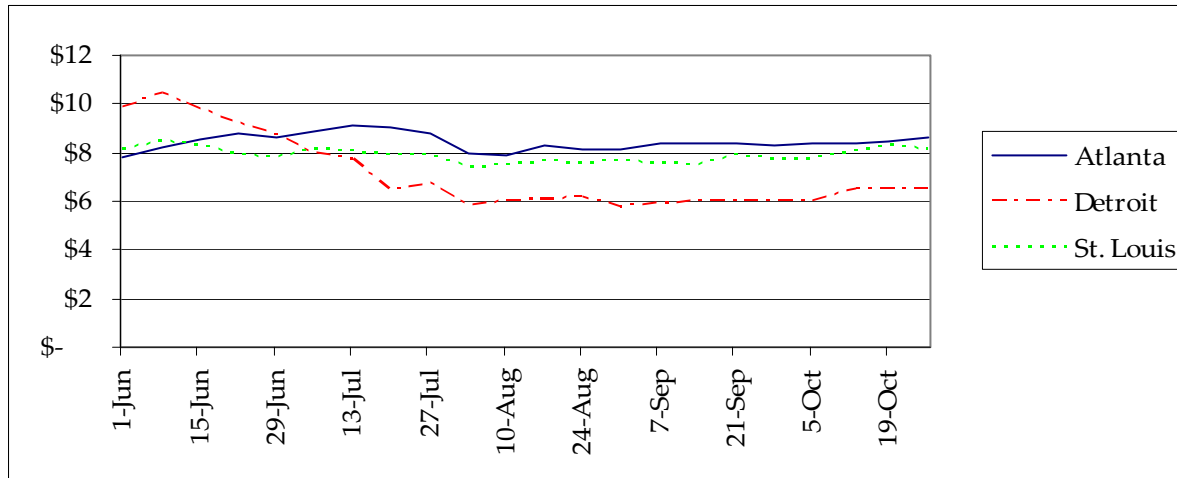


Sources: USDA/ERS Vegetables and Specialties Situation and Outlook Yearbook

U.S. Fresh Cabbage Use pounds per capita



2000-2004 Terminal Market Weekly Median Prices (50 Pound Cartons)



Information Sources

USDA/ERS Fresh Cabbage Commodity Highlight

<http://www.ers.usda.gov/Briefing/Vegetables/vegpdf/FrCabbageHigh.pdf>

USDA Vegetable and Melons Report

<http://www.ers.usda.gov/publications/vgs/>

UF Marketing Information System

<http://mids.ifas.ufl.edu/>

UK Horticulture Budgets

<http://www.uky.edu/Ag/HortBiz/pubs.html>

NASS Vegetable Reports

<http://usda.mannlib.cornell.edu/reports/nassr/fruit/pvg-bban/>

Prepared by Matt Ernst (mernst@uky.edu) and Tim Woods (tawoods@uky.edu), University of Kentucky Department of Agricultural Economics, 400 Charles E. Barnhart Building, Lexington, KY, 40546-0276, Phone 859-257-5762, Fax 859-323-1913.

<http://www.uky.edu/Ag/AgEcon>

Educational programs of the Kentucky Cooperative Extension Service serve all people regardless of race, color, age, sex, religion, disability, or national origin.