



093478

B-174895

11-17-72

*REPORT TO THE COMMITTEE
ON EDUCATION AND LABOR
HOUSE OF REPRESENTATIVES*



Child-Care Activities
In Chicago, Illinois, And
St. Louis, Missouri B-174895

*BY THE COMPTROLLER GENERAL
OF THE UNITED STATES*

093478

NOV. 17. 1972

~~713416~~



COMPTROLLER GENERAL OF THE UNITED STATES
WASHINGTON, D.C. 20548

B-174895

Dear Mr. Chairman:

On January 24, 1972, we issued to your Committee a report entitled "Study of Child-Care Activities in the District of Columbia" (B-174895). This study was prompted by congressional concern with the proliferation of Federal grant programs. The objective of the study was to look into the problems of coordinating these programs at the District level.

The report discussed problems resulting from the numerous Federal child-care programs and from the lack of coordination at the local level and expressed our belief that there was a need for consolidating these programs and for better coordinating their execution. Our report pointed out the difficulty of coordination when responsibility for implementing the programs was fragmented among several Federal agencies and many local administering agencies. We stated that the situation described in our report could exist in other major urban areas in the Nation.

To ascertain the extent to which the situation in the District existed in other localities, we made a limited study of child-care activities in Chicago, Illinois, and St. Louis, Missouri, as a supplement to our prior report. Because the Federal child-care programs are similar for all localities in the Nation, we are not repeating the legislative background of, and other information about, the programs. The exhibits in this report show the situation as it existed in 1971. (See exhibits I and II.) Child-care activities in both cities expanded in 1972 because of the involvement of additional local administering agencies and child-care operators under the same or additional Federal programs.

At each location funds were provided for comprehensive care in centers for 3- to 4-year-old children. The accompanying exhibit III shows information on child-care activities in Chicago, St. Louis, and the District. This information is not complete because data on some programs of the Departments of Labor and Health, Education, and Welfare was not readily accessible. For example, the records for Chicago child-care activities under the Department of Health, Education, and Welfare were of such volume and variety that we could not compile the necessary data without expending an unreasonable effort.

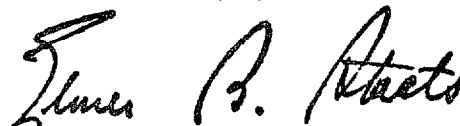
The number of Federal programs in Chicago is approximately the same as that in the District and the number in St. Louis is less than that in the District. However, in Chicago, more administering agencies and child-care operators are involved in providing child-care services than in St. Louis and the District, which are less populated.

Officials of public and private organizations in Chicago and St. Louis told us about coordination and operation problems similar to those we noted in the District. These problems, which deal with (1) imbalance in the location of child-care centers, (2) half-day versus full-day programs, (3) professional staffing, (4) food service arrangements, and (5) supportive services, are discussed on pages 8 through 14 of our report on the District.

Our findings confirm our view that the situation in the District could exist in other major urban areas and fortify the conclusion in our earlier report that Federal child-care programs should be consolidated and better coordinated at the local level.

Copies of this report are being sent to the Director, Office of Management and Budget; the Secretary of Health, Education, and Welfare; the Secretary of Labor; the Secretary of Housing and Urban Development; and the Director, Office of Economic Opportunity.

Sincerely yours,

A handwritten signature in cursive script, appearing to read "James B. Axtell".

Comptroller General
of the United States

Enclosures

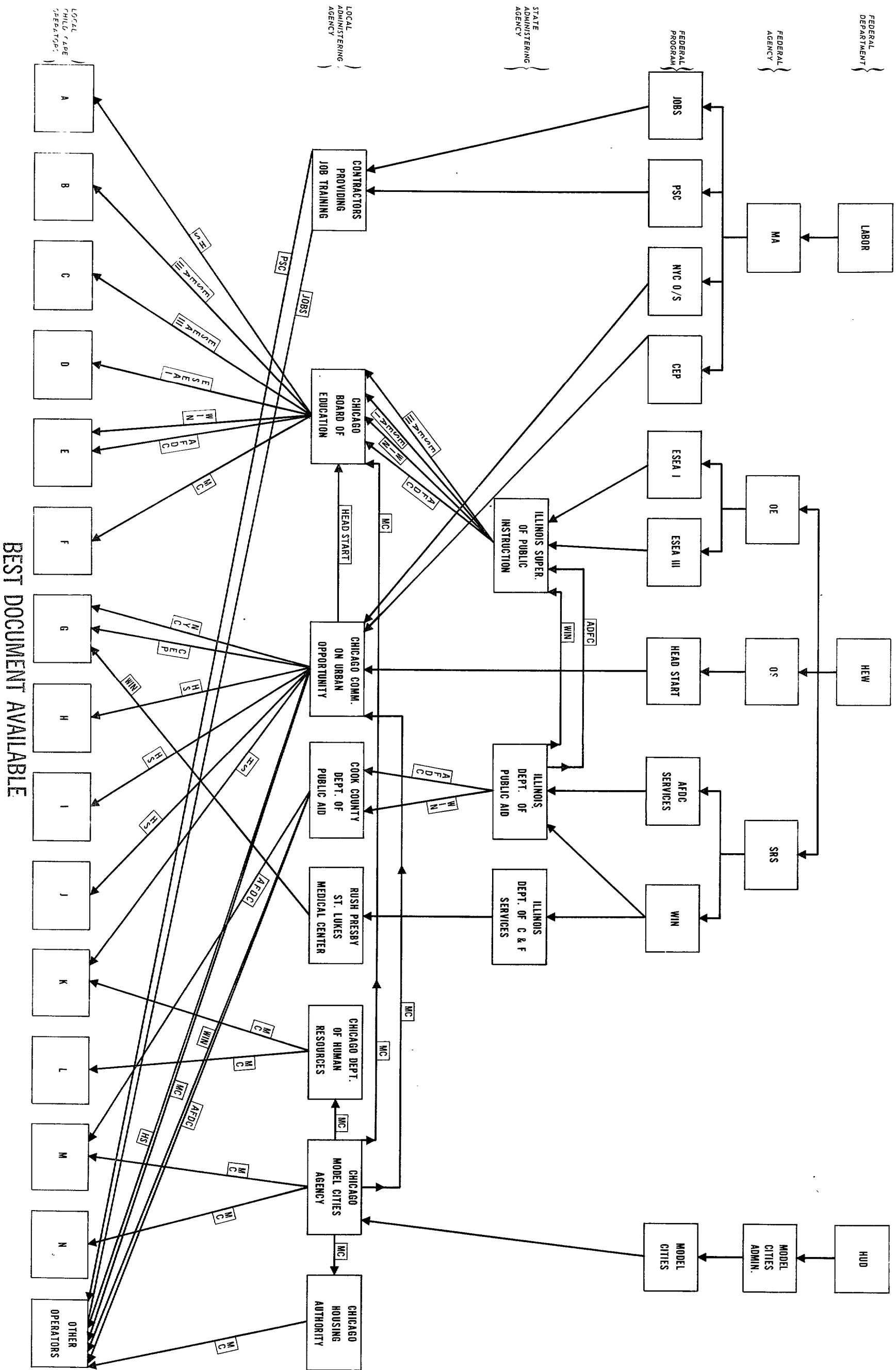
The Honorable Carl D. Perkins, Chairman
Committee on Education and Labor
House of Representatives

ABBREVIATIONS

| | |
|----------|---|
| AFDC | Aid to Families with Dependent Children |
| CEP | Concentrated Employment Program |
| ESEA I | Elementary and Secondary Education Act, title I |
| ESEA III | Elementary and Secondary Education Act, title III |
| HEW | Department of Health, Education, and Welfare |
| HS | Headstart Program |
| HUD | Department of Housing and Urban Development |
| JOBS | Job Opportunities in the Business Sector |
| MA | Manpower Administration |
| MC | Model Cities |
| NYC O/S | Neighborhood Youth Corps Out-of-School |
| OE | Office of Education |
| OS | Office of the Secretary |
| PSC | Public Service Careers Program |
| SRS | Social and Rehabilitation Service |
| WIN | Work Incentives program |

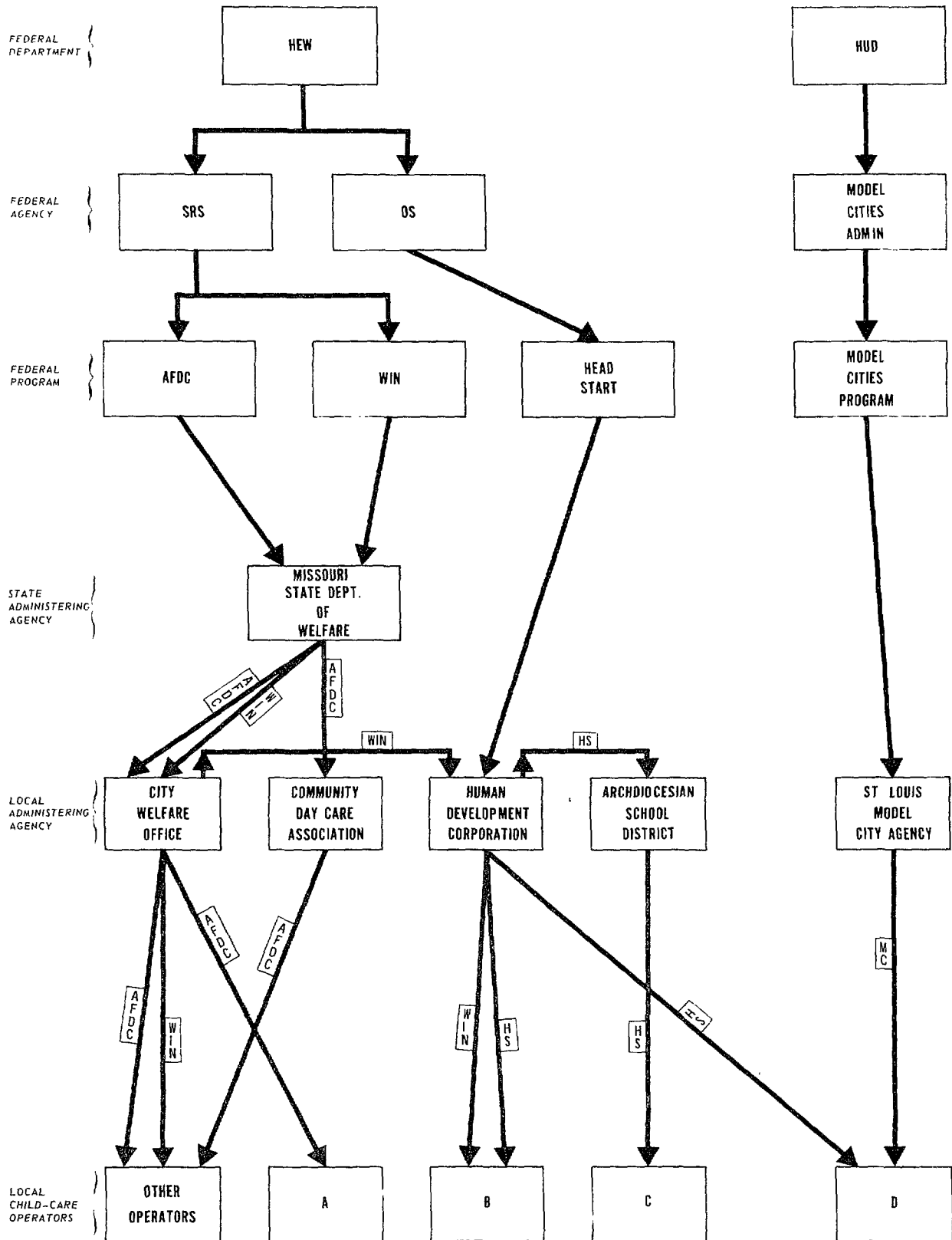
CHILD-CARE ACTIVITIES IN CHICAGO

EXHIBIT I



BEST DOCUMENT AVAILABLE

CHILD-CARE ACTIVITIES IN ST. LOUIS



INFORMATION ON CHILD-CARE ACTIVITIES

FISCAL YEAR 1971

| <u>Locality</u> | <u>Popula- tion</u> | <u>Fed- eral pro- grams</u> | <u>State agen- cies</u> | <u>Local agen- cies</u> | <u>Local child- care opera- tors</u> | <u>Chil- dren served</u> | <u>Child- care centers</u> | <u>Federal funds (mil- lions)</u> |
|-------------------------|-------------------------|---|---------------------------------|---------------------------------|--|----------------------------------|------------------------------------|---|
| Chicago | 3,366,957 | 10 | 3 | 7 | 112 | 11,051 | 246 | \$11.1 |
| St. Louis | 622,236 | 4 | 1 | 5 | 31 | 2,083 | 69 | 1.6 |
| District of Columbia | 756,510 | 11 | - | 4 | 62 | 4,450 | 120 | 5.9 |

Copies of this report are available from the U. S. General Accounting Office, Room 6417, 441 G Street, N W., Washington, D.C., 20548.

Copies are provided without charge to Members of Congress, congressional committee staff members, Government officials, members of the press, college libraries, faculty members and students. The price to the general public is \$1.00 a copy. Orders should be accompanied by cash or check.