

***Agency for  
Toxic Substances  
and Disease  
Registry***

***Wyckoff/Eagle Harbor Meeting***

**ATSDR**

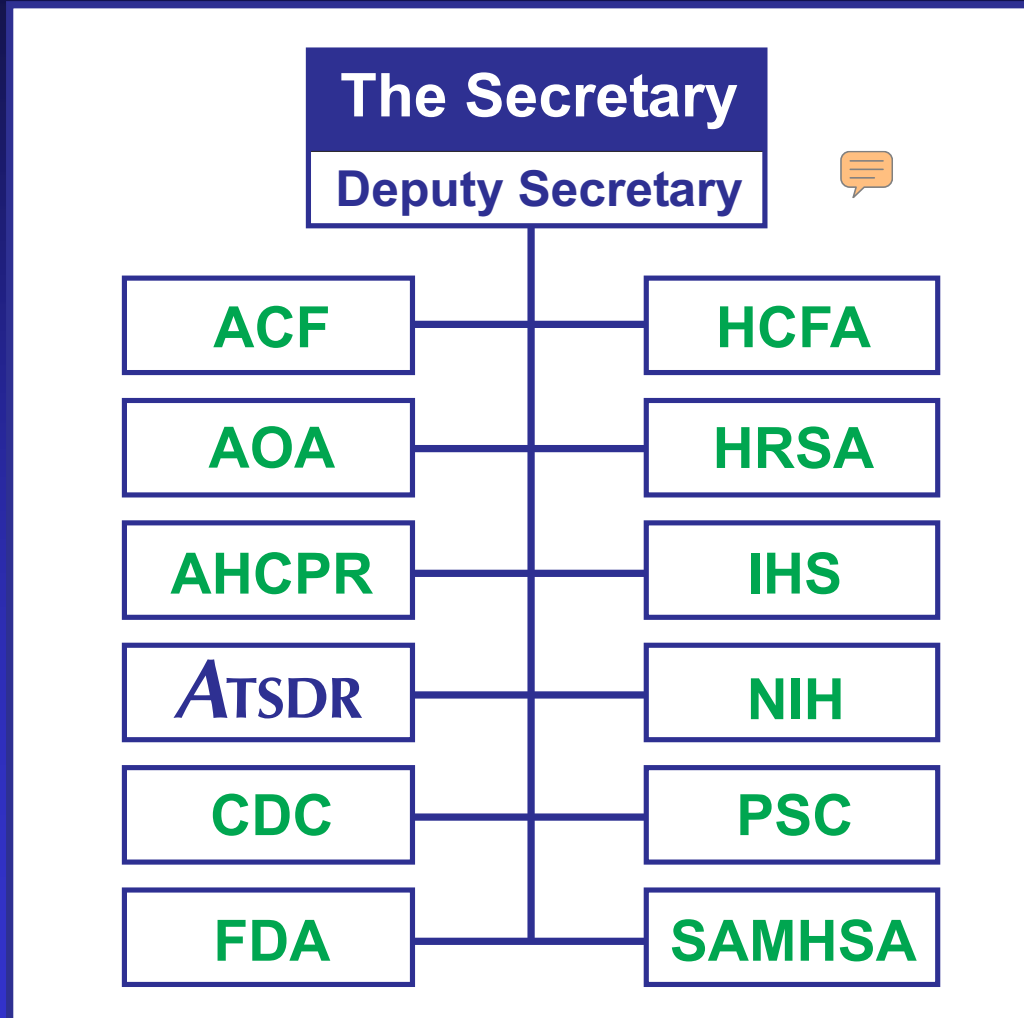
***Capt. Richard Kauffman, M.S.  
U.S. Public Health Service  
Senior Regional Representative  
ATSDR Region 10***

***206-553-2632  
RKauffman@cdc.gov***

**ATSDR**

**C**omprehensive  
**E**nvironmental  
**R**esponse  
**C**ompensation, and  
**L**iability   
**A**ct

# U.S. Department of Health and Human Services





ATSDR

# *Mission*

- **To prevent exposure and adverse human health effects and diminished quality of life associated with exposure to hazardous substances from waste sites, unplanned releases, and other sources of pollution present in the environment.**



# Goals

- Evaluate human health risks from toxic sites and releases and conduct timely, responsive public health actions.
- Determine the relationship between exposure to toxic substances and disease.
- Develop and provide reliable, understandable information for affected communities and stakeholders.
- Build and enhance effective partnerships.
- Foster a quality work environment at ATSDR.



# *Site Specific Evaluations*

- **Public Health Advisories**
- **Public Health Assessments**
- **Health Consultations**
- **Exposure Investigations**



# *Past ATSDR Involvement*

- Preliminary Public Health Assessment in 1988
- Site Review & Update on Wyckoff Operable Unit in 1993
- Public Health Assessment on Harbor OUs in Partnership with WDOH 1992- 1994

# ***Why is ATSDR Involved Now?***

- **EPA requested a Health Consultation for the Wyckoff/ Eagle Harbor Superfund Site**
  - **To evaluate current and future uses of the site**
  - **To determine if potential public health issues exist from real or possible human exposure to toxic material exist.**



# *Health Consultation*

**Provide advice on public health issues related to real or possible human exposure to toxic material.**

**Make recommendations to protect the public's health.**



# ***Health Consultations***

## ***Assist in determining:***

- **Whether actions are needed to reduce exposure to hazardous substances**
- **Whether additional information is needed**
- **How to respond to community concerns**



# *Data Used to Develop a Health Consultation*

- Environmental Data
- Health Data
- Community Health Concerns



# ***Actions Resulting from Health Consultations***

- **Further work by ATSDR and/or State Health Department**
- **Better information for residents living near sites**
- **EPA and/or ECOLOGY action**

# *Health Investigations*



ATSDR



# *Types of Health Studies*

- **Exposure Studies**
- **Cluster Investigation Studies**
- **Disease and Symptom  
Prevalence Studies**







*Where health and the environment come together*



Asbestos Testing, Libby, Montana

**Spotlight** [more news>](#)

ATSDR is sponsoring a second round of **FREE** asbestos medical testing for those who lived, worked, or played in the **Libby, Montana**, area for 6 months or more before December 31, 1990. Testing begins July 30. [Details](#)

**Hazardous Substances** [more>](#)

- ◆ [ToxFAQs™](#)
- ◆ [Top 20 Hazardous Substances](#)
- ◆ [Minimal Risk Levels \(MRLs\)](#)

**Measuring Health Effects** [more>](#)

- ◆ [Hazardous Substances Emergency Events Surveillance \(HSEES\)](#)
- ◆ [National Exposure Registry](#)

**Information Sources** [more>](#)

- ◆ [HazDat Database](#)
- ◆ [Science Page](#)

**Emergency Response** [more>](#)

- ◆ [Emergency Response Contacts](#)
- ◆ [Terrorism and Toxic Substances](#)
- ◆ [Medical Management Guidelines](#)

**Hazardous Waste Sites** [more>](#)

- ◆ [How to Request ATSDR Involvement](#)
- ◆ [List Sites by State](#)
- ◆ [List Sites by Contaminant](#)
- ◆ [Public Health Assessments](#)

**Environmental Health Education** [more>](#)

- ◆ [Case Studies in Environmental Medicine](#)
- ◆ [Environmental Health and Nursing](#)
- ◆ [Risk Communication Materials](#)

**Publications** [more>](#)

**The Agency**

- [About ATSDR](#)
- [ATSDR FAQs](#)
- [Calendar of Major Events](#)
- [Job Openings](#)
- [Funding/Grants](#)
- [Contact Us Toll Free](#)
- > [VISITOR SURVEY](#) <

**Audience Groups**

- [Children and Parents](#)
- [Communities](#)
- [Healthcare Professionals](#)
- [Tribal Affairs](#)



***QUESTIONS?***

**ATSDR**

***Capt. Richard Kauffman, M.S.  
U.S. Public Health Service  
Senior Regional Representative  
ATSDR Region 10***

***206-553-2632  
RKauffman@cdc.gov***

**ATSDR**