

Explanation

Contour intervals, % g

- 200 —
- 175 —
- 150 —
- 125 —
- 100 —
- 90 —
- 80 —
- 70 —
- 60 —
- 50 —
- 40 —
- 35 —
- 30 —
- 25 —
- 20 —
- 15 —
- 10 —
- 5 —
- 0 —

Note: contours are irregularly spaced

+ 6.2 Point value of spectral response acceleration expressed as a percent of gravity

— 10 — Contours of spectral response acceleration expressed as a percent of gravity. Hachures point in direction of decreasing values.

— 10 — Contours of spectral response acceleration expressed as a percent of gravity. Hachures point in direction of decreasing values.

DISCUSSION

The acceleration values contoured are the random horizontal component. For design purposes, the reference site condition for the map is to be taken as NEHRP site class B.

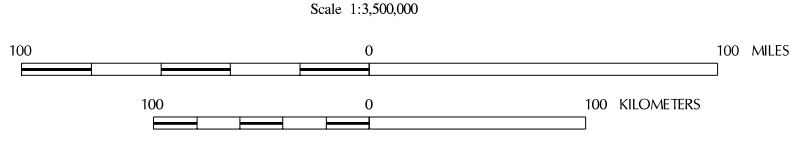
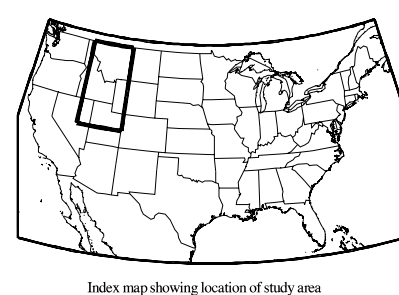
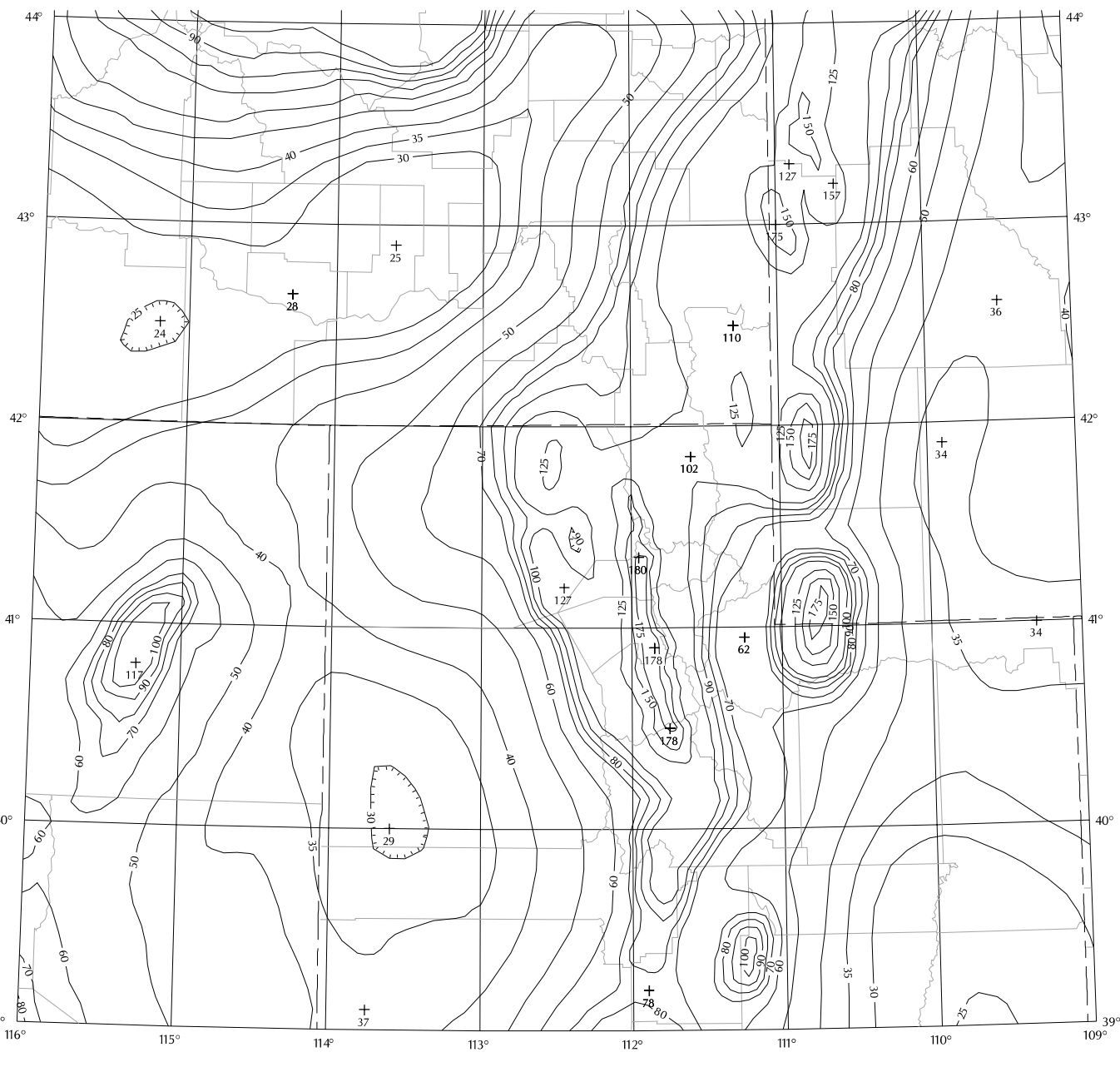


Figure 9.4.1.1 (e). Maximum Considered Earthquake Ground Motion for Region 2 of 0.2 sec Spectral Response Acceleration (5% of Critical Damping), Site Class B.