

Mr. Hitchcock

TRAFFIC VOLUME TRENDS

Washington, D. C.

August 1949

On the basis of preliminary figures, motor-vehicle travel on main and local roads for the country as a whole was higher during August 1949 than in any previous August.

	Vehicle-miles (millions)	Percentage change from—		
		1941	1943	1948
Main rural roads.....	16,167	+24.9	+136.5	+7.9
Local rural roads.....	5,834	+27.7	+109.7	+10.5
All rural roads.....	22,001	+25.6	+128.8	+8.5

Traffic on rural roads in the geographic regions and changes from previous years were as follows:

	Vehicle-miles (millions)	Percentage change from—		
		1941	1943	1948
Eastern regions.....	7,089	+12.3	+138.4	+14.3
Central regions.....	11,143	+30.8	+126.4	+6.8
Western regions.....	3,769	+40.3	+118.7	+3.7

Travel on city streets was also heavier than in any previous August. Comparisons with August of previous years for city streets, rural roads, and all roads and streets are as follows:

	Percentage change from—		
	1941	1943	1948
City streets.....	+14.7	+91.3	+6.1
Rural roads.....	+25.6	+128.8	+8.5
All roads and streets.....	+20.3	+109.6	+7.4

H. S. Fairbank, Deputy Commissioner
Bureau of Public Roads

Attachments

Table 1.—PRELIMINARY SUMMARY OF AUTOMATIC TRAFFIC RECORDER DATA FOR AUGUST 1949
INCLUDING 681 STATIONS IN 43 STATES

Type of highway and State	Number of stations	Traffic volume percentage change from August 1948	Type of highway and State	Number of stations	Traffic volume percentage change from August 1948
STATE HIGHWAYS					
Alabama.....	7	+5.1	Texas.....	83	+9.2
Arizona.....	5	-0.2	Utah.....	12	+6.9
Arkansas.....	20	+19.7	Vermont.....	6	+2.3
California.....	6	+1.3	Virginia.....
Colorado.....	22	+18.5	Washington.....	10	+4.6
Connecticut.....	17	+8.2	West Virginia.....	11	+0.8
Delaware.....	Wisconsin.....	7	-5.1
Florida.....	18	+6.2	Wyoming.....	5	+1.6
Georgia.....	TOTAL—43 STATES.....	655	+7.9
Idaho.....	8	+12.3			
Illinois.....	3	+2.7	LOCAL HIGHWAYS		
Indiana.....	21	+6.3	Alabama.....	2	+12.5
Iowa.....	25	+14.1	Connecticut.....	3	-7.4
Kansas.....	12	-0.6	Indiana.....	1	+3.9
Kentucky.....	13	+6.3	Iowa.....	7	+17.2
Louisiana.....	16	+7.7	Maryland.....	1	+64.6
Maine.....	12	+6.5	Michigan.....	2	-10.8
Maryland.....	17	+12.6	Missouri.....	2	+18.1
Massachusetts.....	8	+7.6	Montana.....	1	+13.0
Michigan.....	26	+6.4	Nebraska.....	1	+1.8
Minnesota.....	24	+8.1	North Dakota.....	2	+1.5
Mississippi.....	10	+12.8	Ohio.....	2	-3.1
Missouri.....	25	+10.8	Rhode Island.....	1	+5.6
Montana.....	11	+10.4	Wisconsin.....	1	-9.9
Nebraska.....	9	+11.9	TOTAL—13 STATES.....	26	+10.5
Nevada.....	16	+1.3			
New Hampshire.....	15	+4.9	ALL HIGHWAYS—		
New Jersey.....	4	+8.5	43 STATES.....	681	+8.5
New Mexico.....	16	+3.6			
New York.....	3 EASTERN REGIONS.....	172	+14.3
North Carolina.....	20	+13.5			
North Dakota.....	11	+9.8	4 CENTRAL REGIONS.....	397	+6.8
Ohio.....	14	+8.4			
Oklahoma.....	20	+5.1	2 WESTERN REGIONS.....	112	+3.7
Oregon.....			
Pennsylvania.....	27	+13.8			
Rhode Island.....	2	-17.4			
South Carolina.....	10	+7.1			
South Dakota.....	17	+5.8			
Tennessee.....	14	+11.4			

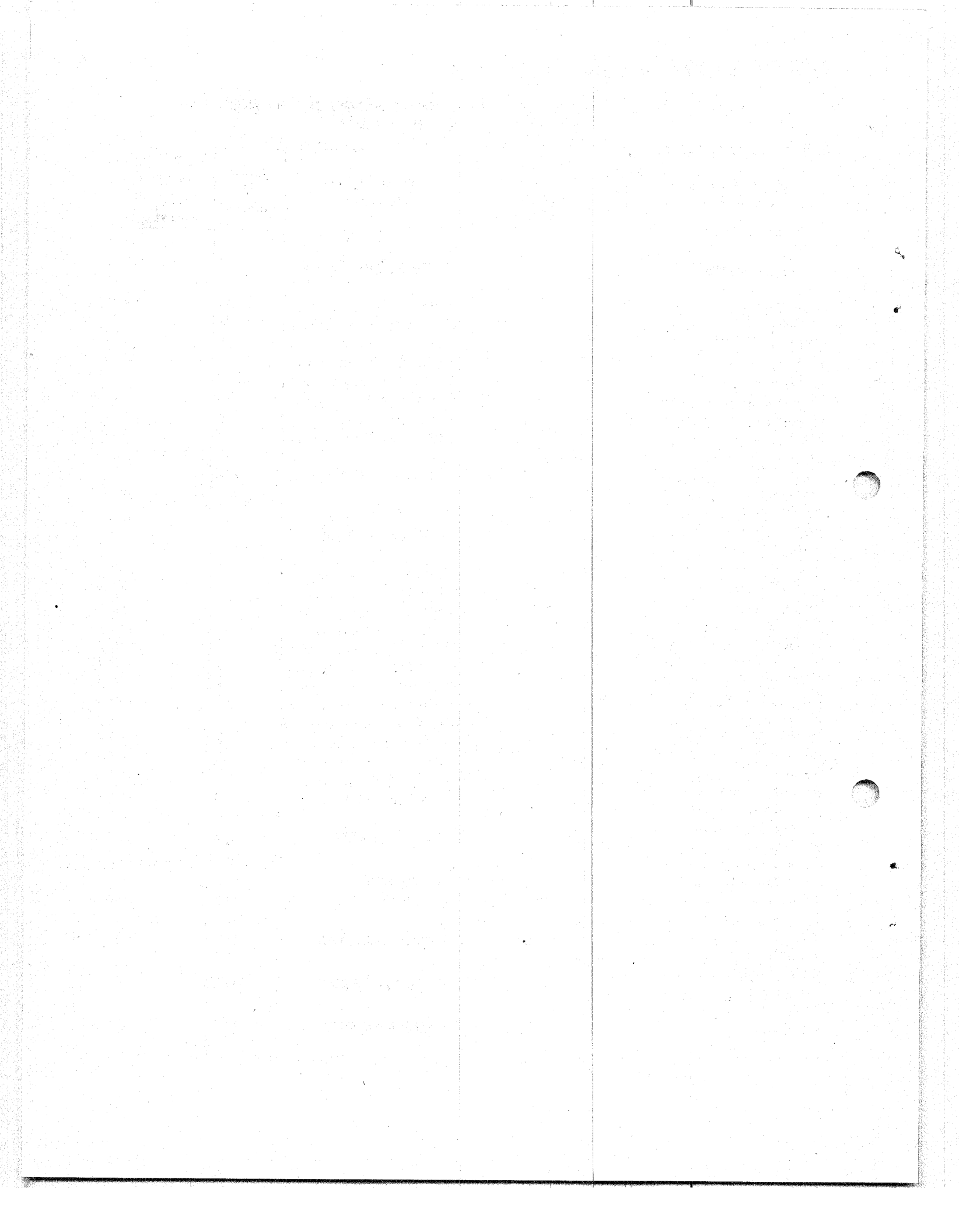


Table 2.—REVISED SUMMARY OF AUTOMATIC TRAFFIC RECORDER DATA FOR JULY 1949 INCLUDING 719 STATIONS IN 47 STATES¹

Region and State	Number of stations	Traffic volume percentage change from July 1948	Region and State	Number of stations	Traffic volume percentage change from July 1948
NEW ENGLAND:			EAST SOUTH CENTRAL:		
Connecticut.....	20	+7.9	Alabama.....	10	+6.1
Maine.....	12	+10.6	Kentucky.....	13	+9.5
Massachusetts.....	9	+10.0	Mississippi.....	10	+13.7
New Hampshire.....	15	+5.5	Tennessee.....	13	+9.8
Rhode Island.....	3	-2.1	Subtotal.....	46	+9.9
Vermont.....	12	+8.1			
Subtotal.....	71	+8.1	WEST SOUTH CENTRAL:		
MIDDLE ATLANTIC:			Arkansas.....	16	+13.5
New Jersey.....	4	+5.5	Louisiana.....	10	+7.0
New York.....	Oklahoma.....	20	+4.2
Pennsylvania.....	27	+13.9	Texas.....	86	+10.2
Subtotal.....	31	+11.4	Subtotal.....	138	+8.9
SOUTH ATLANTIC:			MOUNTAIN:		
Delaware.....	4	+8.1	Arizona.....	5	+5.0
Maryland.....	18	+12.1	Colorado.....	22	+14.0
Virginia.....	2	+7.4	Idaho.....	8	+11.8
West Virginia.....	11	+0.9	Montana.....	13	+15.8
Subtotal north portion.....	35	+8.9	Nevada.....	16	+5.5
Florida.....	15	+6.3	New Mexico.....	15	+9.4
Georgia.....	10	+3.5	Utah.....	12	+10.0
North Carolina.....	20	+7.8	Wyoming.....	6	+8.2
South Carolina.....	9	+6.2	Subtotal.....	97	+10.4
Subtotal south portion.....	54	+6.5	PACIFIC:		
Subtotal region.....	89	+7.8	California.....	5	+3.7
EAST NORTH CENTRAL:			Oregon.....	13	+15.3
Illinois.....	4	+0.5	Washington.....	10	+3.7
Indiana.....	22	+8.8	Subtotal.....	28	+8.2
Michigan.....	28	+9.7			
Ohio.....	17	+2.6	TOTAL ALL STATES.....	719	+6.5
Wisconsin.....	8	-2.8	STATE HIGHWAYS.....	688	+7.1
Subtotal.....	79	+6.2	LOCAL HIGHWAYS.....	31	+4.7
WEST NORTH CENTRAL:			3 EASTERN REGIONS.....	191	+7.6
Iowa.....	34	+12.2	4 CENTRAL REGIONS.....	403	+5.7
Kansas.....	13	+4.7	2 WESTERN REGIONS.....	125	+6.9
Minnesota.....	24	+9.7			
Missouri.....	27	+9.7			
Nebraska.....	12	+6.7			
North Dakota.....	13	+13.1			
South Dakota.....	17	-1.6			
Subtotal.....	140	+8.7			

¹Combined State and local highways.

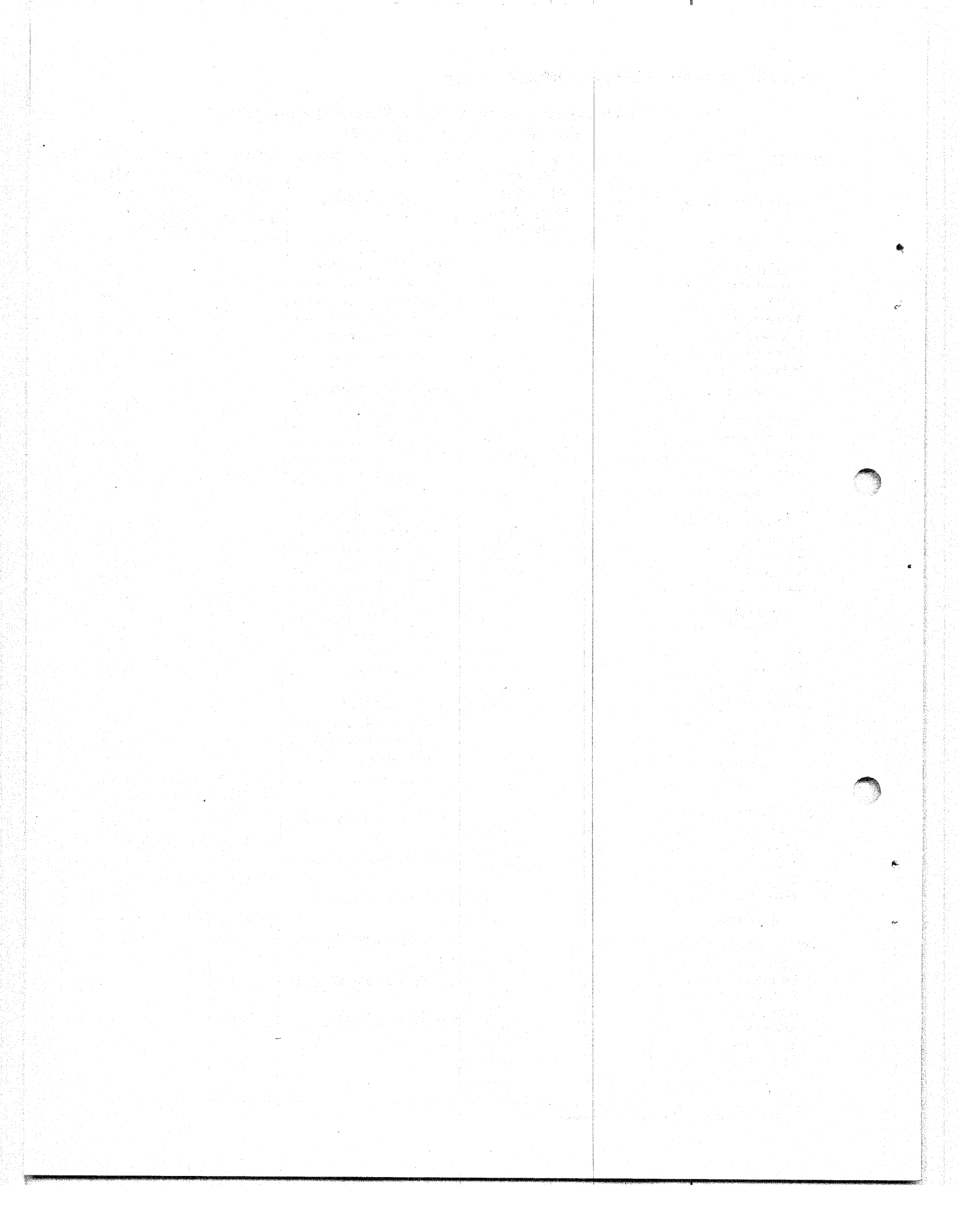
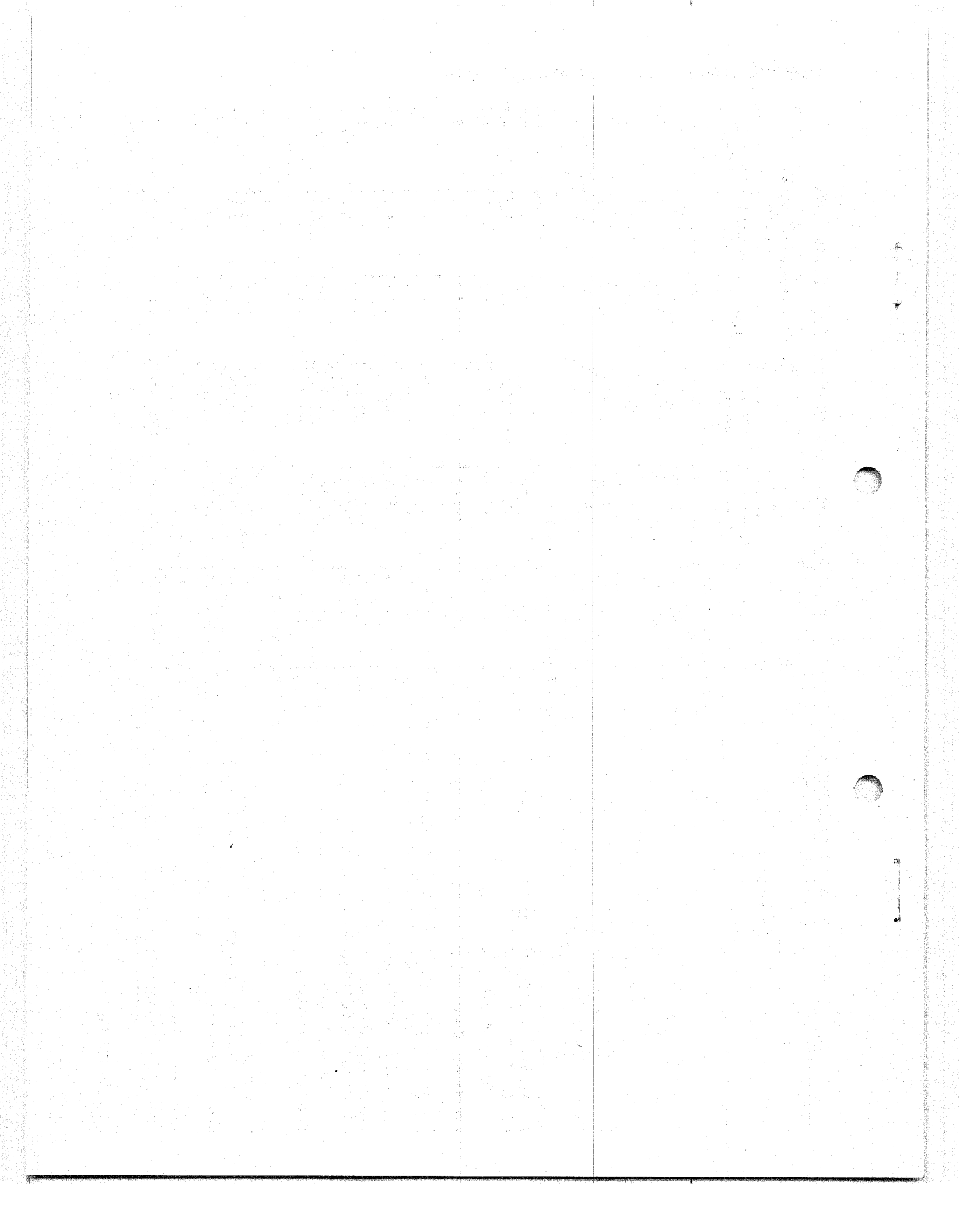


Table 3.—NUMBER OF VEHICLES, CLASSIFIED BY TYPES, USING TOLL FACILITIES IN AUGUST 1949 COMPARED WITH THOSE IN AUGUST 1948

Facilities	1949			Percentage change from 1948		
	Total	Passenger cars ¹	Trucks and busses	Total	Passenger cars	Trucks and busses
E A S T E R N R E G I O N S						
3 in the New England States.....	1,058,681	962,344	96,337	+19.8	+19.7	+20.7
8 in the Middle Atlantic States.....	9,340,671	7,886,447	1,454,224	+6.5	+6.3	+7.7
2 parkways in the Middle Atlantic States.....	2,163,800	2,163,800	+6.1	+6.1
Pennsylvania Turnpike ²	470,961	390,049	80,912	+9.1	+7.4	+18.0
Main Turnpike ²	249,329	233,622	15,707	+3.3	+3.3	+2.8
5 in the South Atlantic States.....	694,998	572,136	122,862	+13.6	+13.8	+12.6
TOTAL 20 FACILITIES.....	13,978,440	12,208,398	1,770,042	+7.7	+7.6	+9.0
C E N T R A L R E G I O N S						
3 on the Great Lakes Canadian border ³	855,901	834,318	21,583	-3.2	-3.4	+5.7
1 in the Great Lakes Region.....	132,849	128,526	4,323	+8.5	+8.7	+3.3
Subtotal 4 facilities.....	988,750	962,844	25,906	-1.8	-1.9	+5.3
3 on the Ohio River.....	385,318	340,652	44,666	-0.7	-0.1	-5.0
7 on the Mississippi and St. Croix Rivers, St. Louis and North.....	837,726	725,272	112,454	+4.5	+3.5	+10.9
3 on the Mississippi River south of St. Louis.....	158,283	117,102	41,181	+8.6	+8.3	+9.4
Subtotal 10 facilities.....	996,009	842,374	153,635	+5.1	+4.2	+10.5
3 on the Missouri River.....	240,263	204,360	35,903	+6.2	+7.1	+1.6
3 in the West South Central States.....	30,305	28,980	1,325	+10.2	+9.8	+21.2
Subtotal 6 facilities.....	270,568	233,340	37,228	+6.7	+7.4	+2.2
TOTAL 23 FACILITIES.....	2,640,645	2,379,210	261,435	+1.7	+1.3	+5.8
W E S T E R N R E G I O N S						
2 in California.....	3,405,705	3,099,576	306,129	+6.5	+6.6	+5.6
4 in the Oregon-Washington Area.....	150,474	130,155	20,319	-2.4	+0.1	-15.6
TOTAL 6 FACILITIES.....	3,556,179	3,229,731	326,448	+6.1	+6.3	+3.9
U N I T E D S T A T E S						
TOTAL 49 FACILITIES.....	20,175,264	17,817,339	2,357,925	+6.6	+6.4	+7.9

¹Non-revenue vehicles (when reported) included in report and treated as passenger cars unless otherwise specified. ²Number of vehicles, those using any portion of the facility. ³Two of these facilities are in Western New York and therefore are related to similar facilities in the Central States.



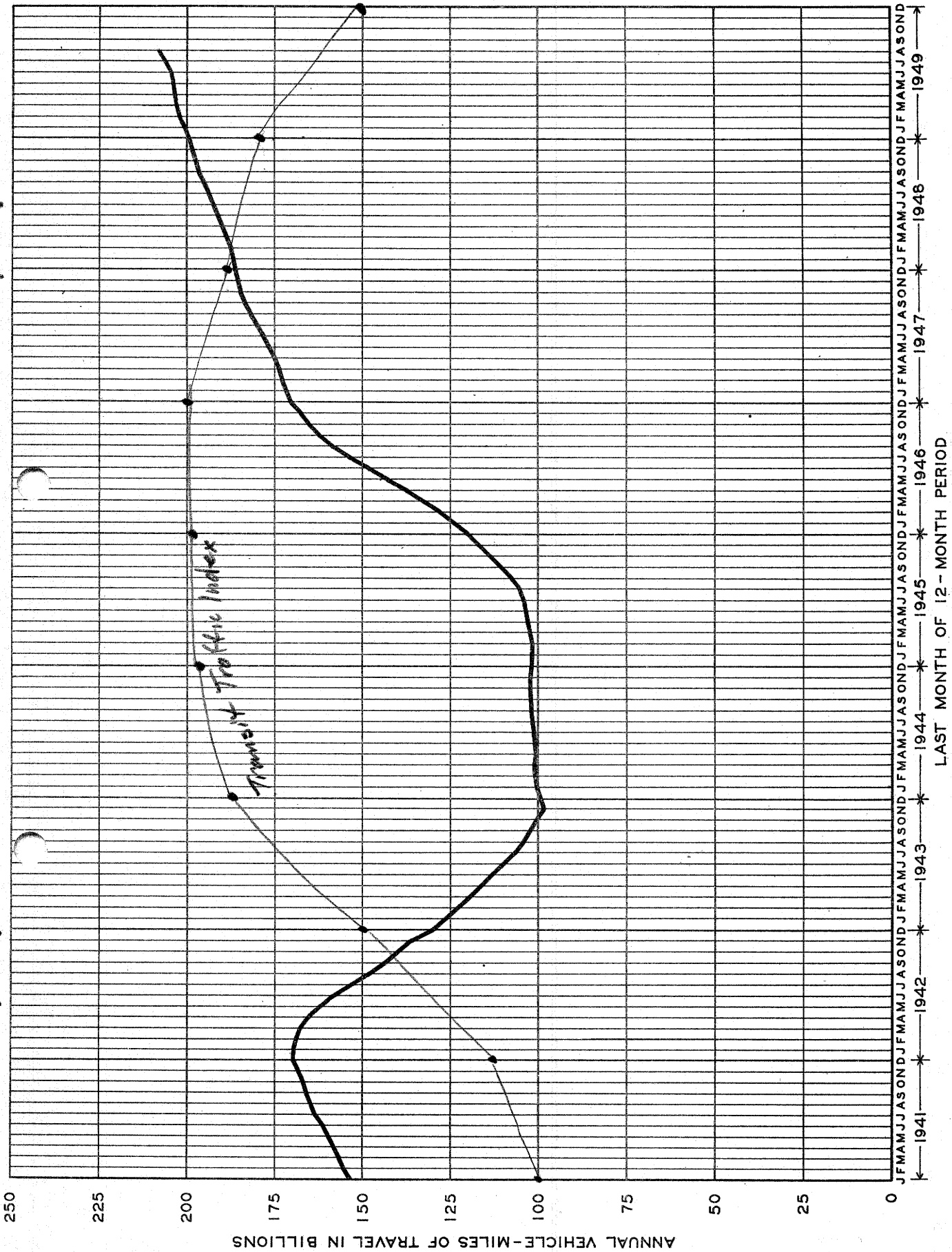


FIGURE 2 - VEHICLE-MILES OF TRAVEL ON ALL RURAL ROADS BY 12 MONTH PERIODS
ENDING EACH MONTH - 1941 TO DATE

180
160
140
120
100
80
60

Transit Traffic Index

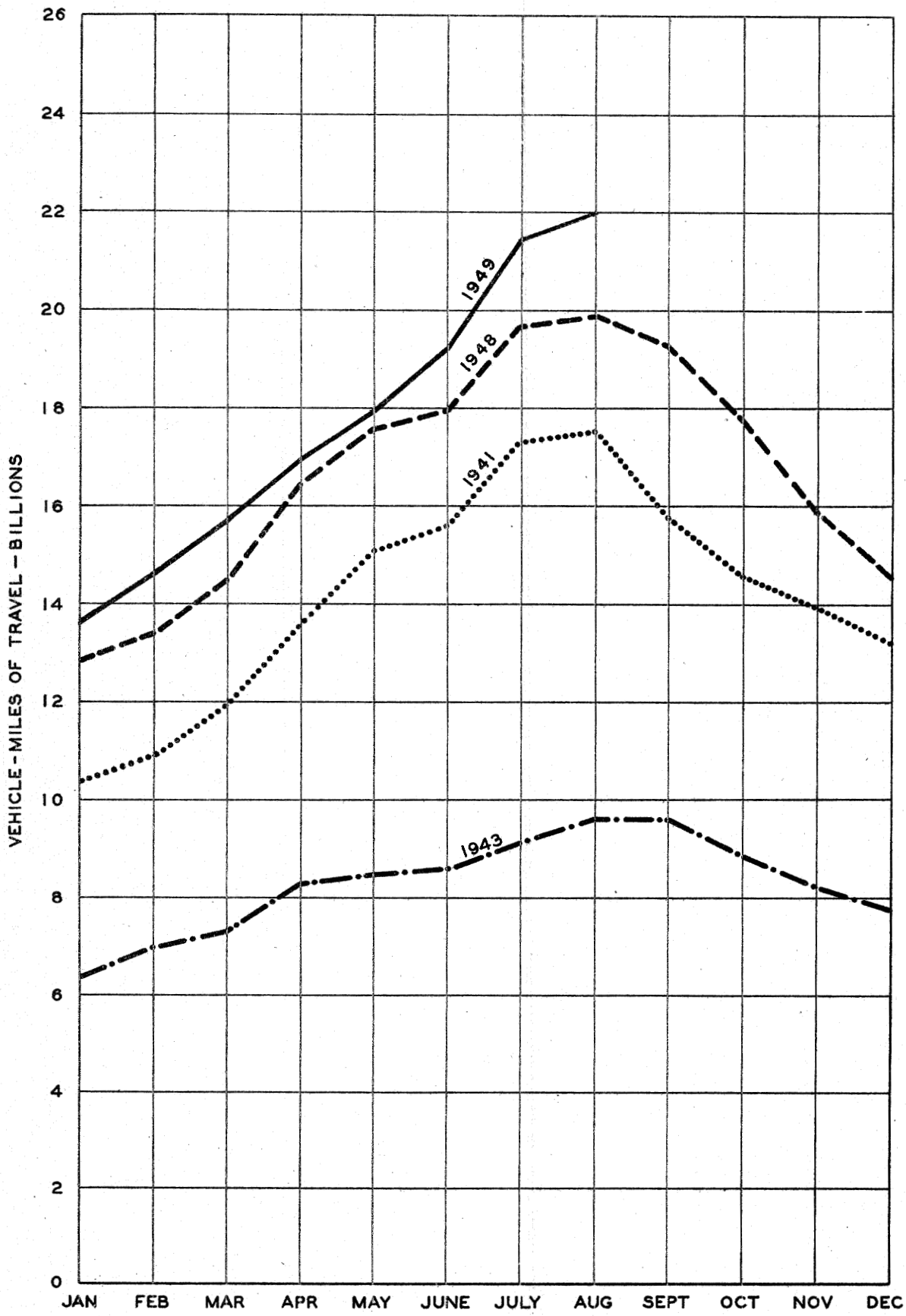


FIGURE 3 - VEHICLE-MILES OF TRAVEL ON ALL RURAL ROADS IN 1941, 1943, 1948 AND 1949

