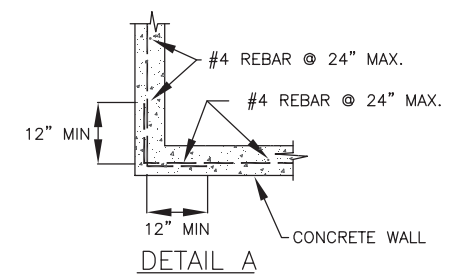
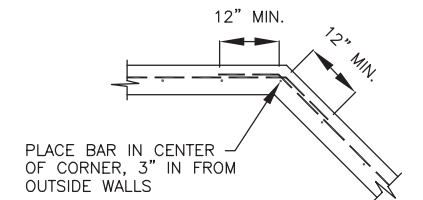


PLAN
HANDRAIL NOT SHOWN

NOTE:
DETAILS A, B, AND C SHOW
DIMENSIONS FOR LAPPING
#4 REBAR.

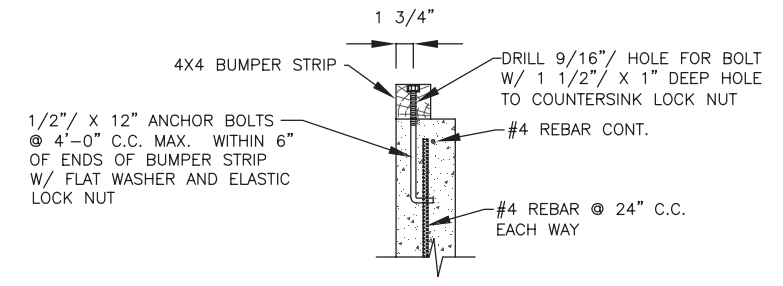


DETAIL A

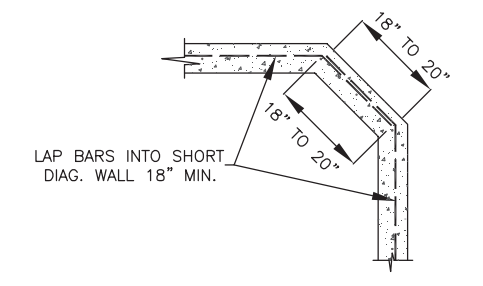


DETAIL B

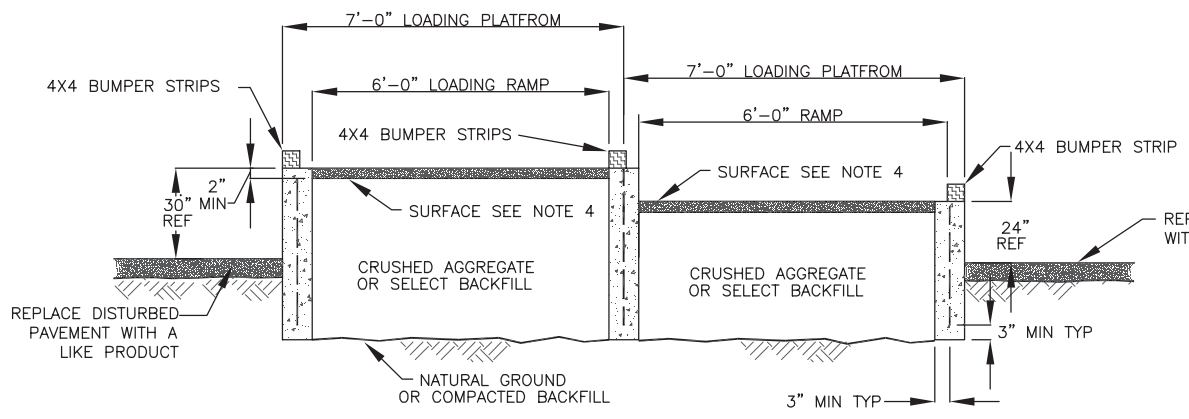
PLACE BAR IN CENTER
OF CORNER, 3" IN FROM
OUTSIDE WALLS



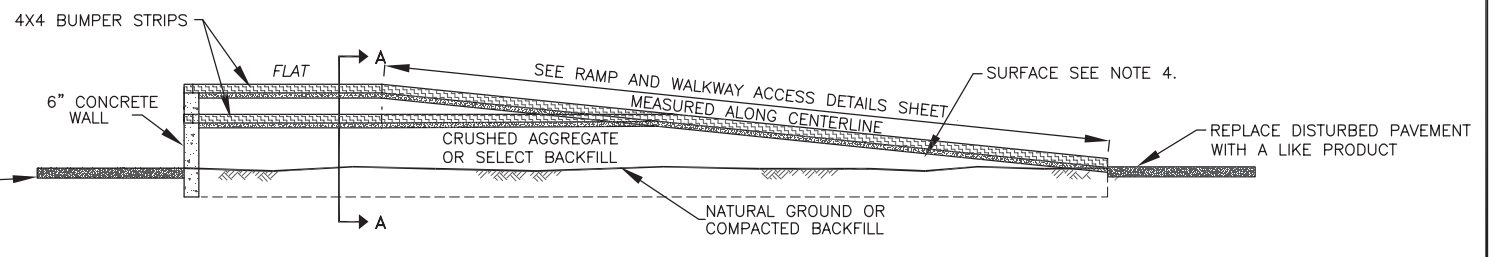
ANCHOR BOLT DETAIL



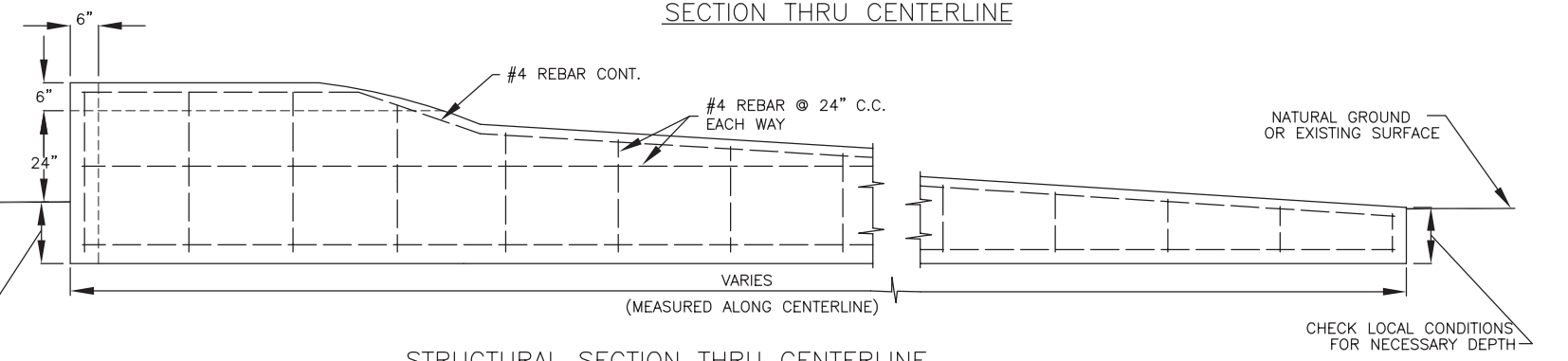
DETAIL C



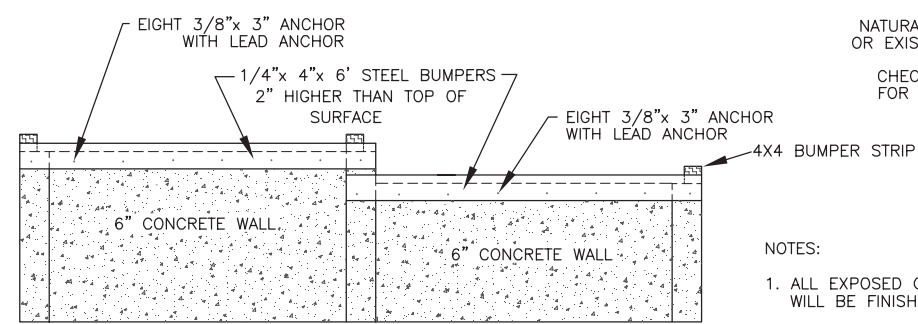
SECTION A-A
HANDRAIL NOT SHOWN



SECTION THRU CENTERLINE



STRUCTURAL SECTION THRU CENTERLINE



FRONT ELEVATION
HANDRAIL NOT SHOWN

- NOTES:
- ALL EXPOSED CONCRETE SURFACES WILL BE FINISHED.
 - REMOVED ASPHALT MAY BE REDUCED TO 2 INCH MINUS MATERIAL AND MIXED WITH THE BACKFILL MATERIAL.
 - ALL CONCRETE WALLS SHALL BE 8 INCHES THICK.
 - SURFACE SHALL EQUAL 4" MIN FOR CONCRETE OR 2" MIN FOR ASPHALT
 - BASE SHALL EQUAL 4 TO 6" CRUSHED AGGREGATE UNDER SURFACING
 - 4X4 WOOD BUMPER STRIPS SHALL BE PRESSURE TREATED WOOD THAT ALLOWS HUMAN CONTACT

Copies of these drawings have been distributed for review. Final approval and signature are pending.

DRAFT

These files are public property and are not for resale. Users of these files are presumed to be professional personnel adequately trained to interpret and adopt them according to local conditions and current and applicable State and local codes. The user assumes all liability for the suitability of their use.

UNLESS OTHERWISE SPECIFIED		12/99	REVISED BY MTDC	DWM
TOLERANCES:	DATE	DATE	REVISION	BY
FRACTIONS +/-				
DECIMALS +/-				
ANGLES +/-				
DIMENSIONS ARE IN INCHES BREAK SHARP EDGES				
DRAWN R.VIERRA		TITLE		
DESIGNED M.HARRINGTON		ACCESSIBLE BOAT RAMP		
CHECKED S.ORAVETZ		FOR DRY LAND LOADING AND UNLOADING		
APPROVED S.ORAVETZ		979-2		
SCALE NONE		SHEET 2 OF 8		
DATE JAN 2000		MTDC- 979		