

CLIENT/PROJECT

COEUR ALASKA INC./KENSINGTON PROJECT

GENERAL PROJECT AREA

**KC HARVEY, LLC**  
SOIL AND WATER RESOURCE CONSULTANTS

Bozeman Montana 406-585-7402

FILE NO.

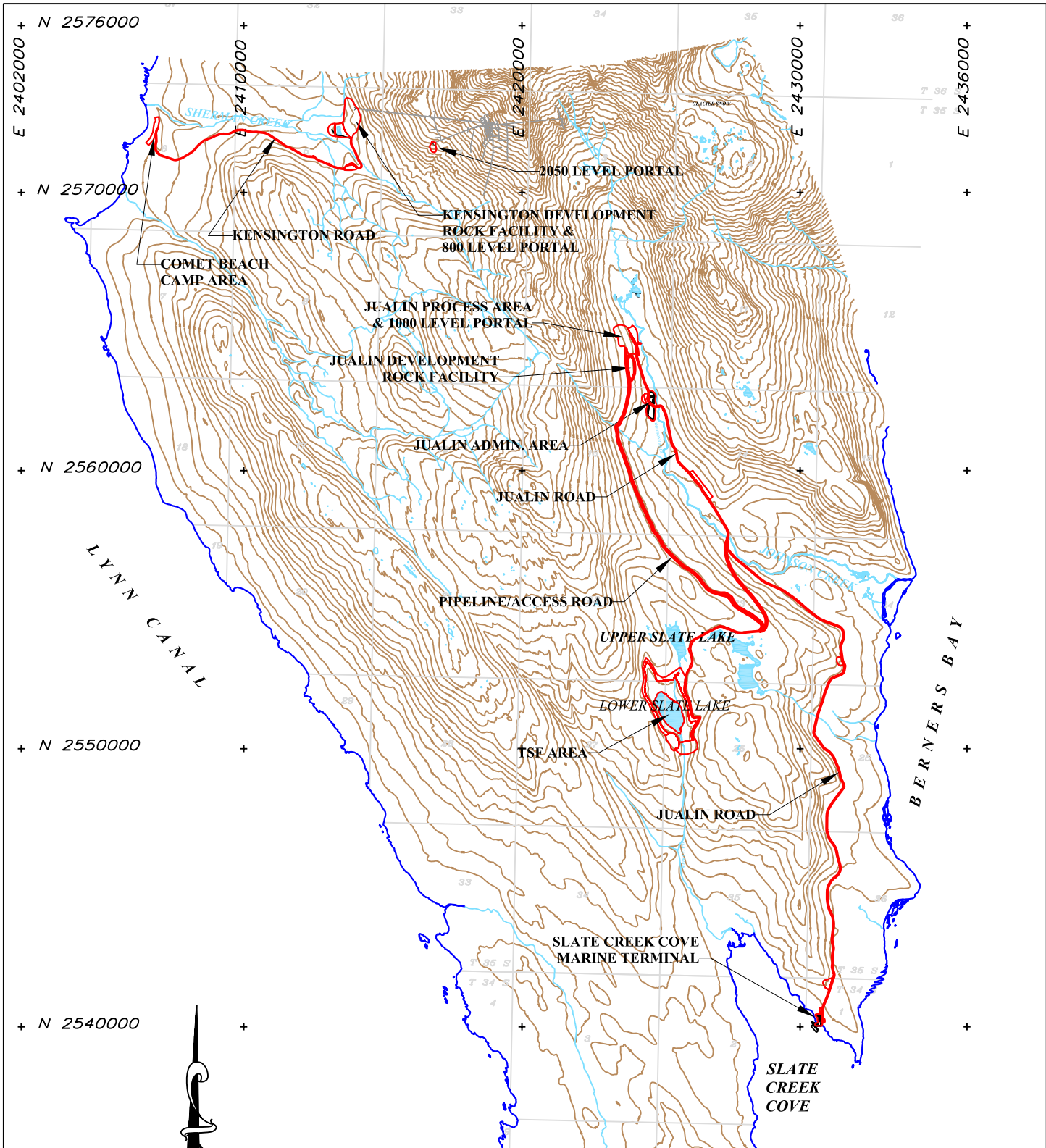
PROJECT MAP.apr

REV

0

DATE MAR. 2005

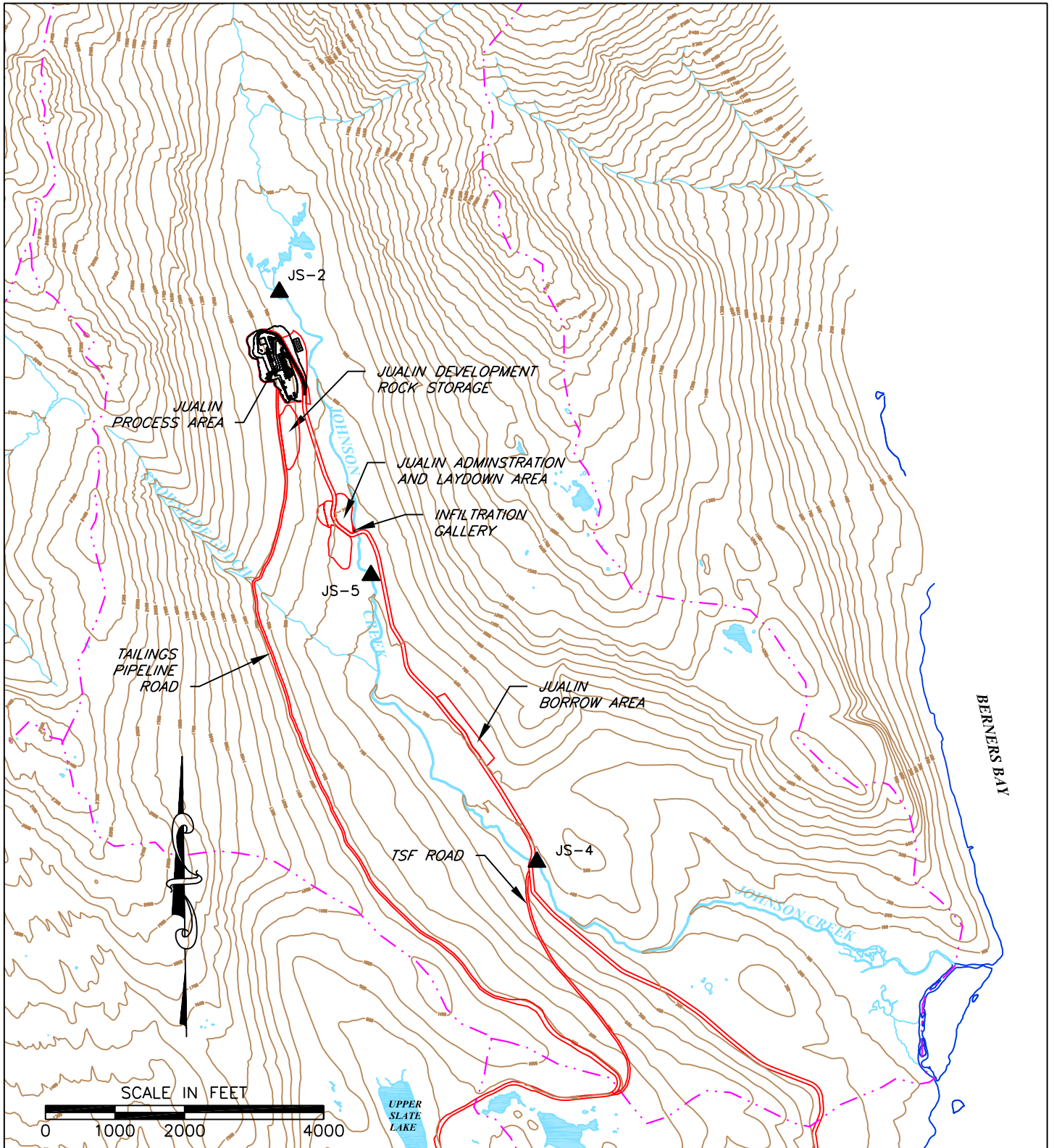
FIGURE NO. 1



CLIENT/PROJECT  
**COEUR ALASKA, INC.**

**GENERAL FACILITIES MAP**

<b>KC HARVEY, LLC</b> SOIL AND WATER RESOURCE CONSULTANTS BOZEMAN MONTANA 406-585-7402	FILE NO. SITMAPB.DWG	REV 0
	DATE APR. 2005	FIGURE NO. 2



**LEGEND**

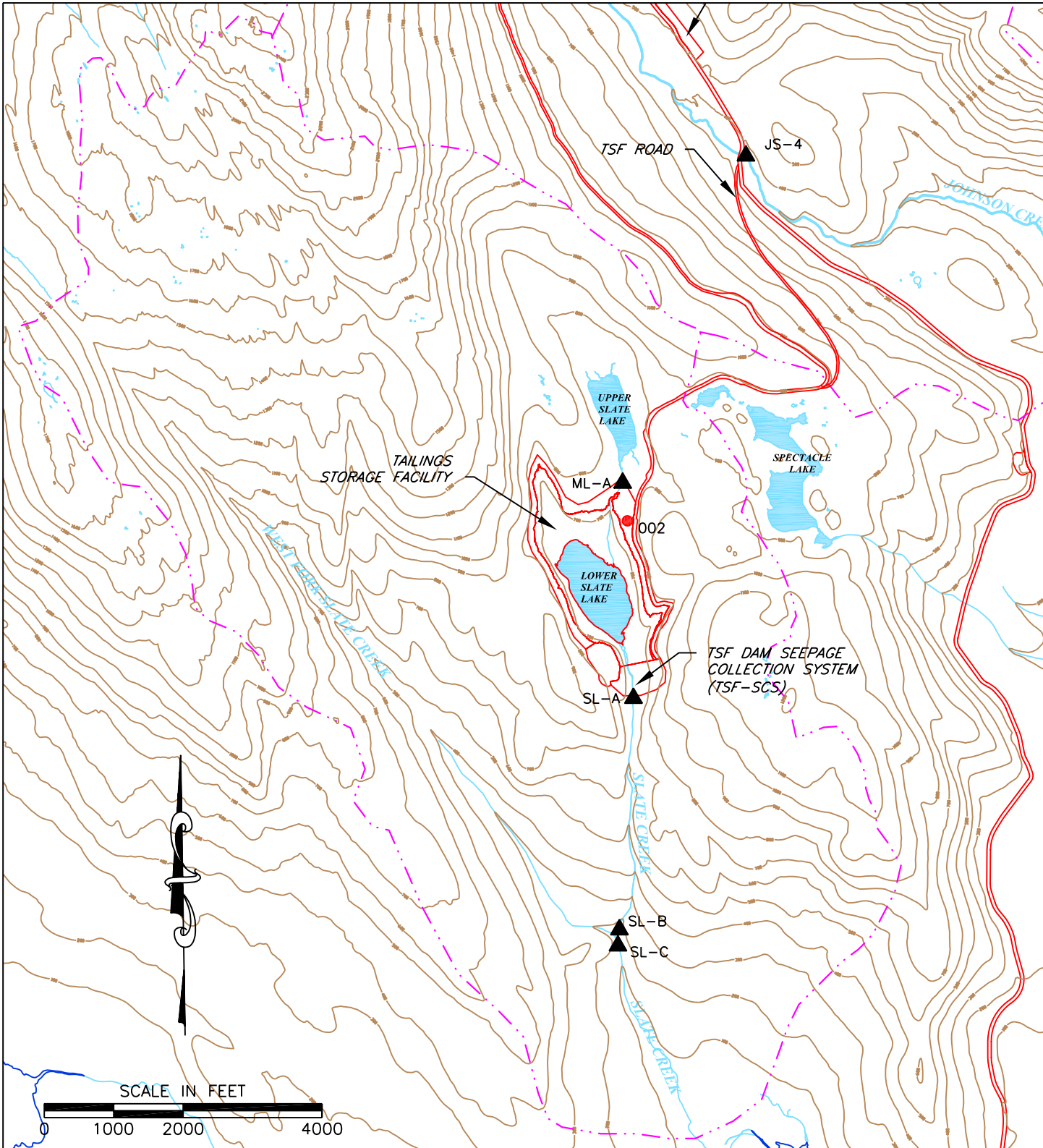
- 002 NPDES OUTFALL
- ▲ SL-E RECEIVING WATER MONITORING POINT
- - - DRAINAGE BASIN BOUNDARY

CLIENT/PROJECT  
 COEUR ALASKA INC./KENSINGTON PROJECT

FRESH WATER MONITORING SITES  
 JOHNSON CREEK DRAINAGE

**KC HARVEY, LLC**  
 SOIL AND WATER RESOURCE CONSULTANTS  
 BOZEMAN MONTANA 406-585-7402

FILE NO. BASINS-b.DWG	REV 1
DATE MAY 2005	FIGURE NO. 3



**LEGEND**

- 002 NPDES OUTFALL
- ▲ SL-E RECEIVING WATER MONITORING POINT
- - - DRAINAGE BASIN BOUNDARY

CLIENT/PROJECT  
 COEUR ALASKA INC./KENSINGTON PROJECT

FRESH WATER MONITORING SITES  
 SLATE CREEK DRAINAGE

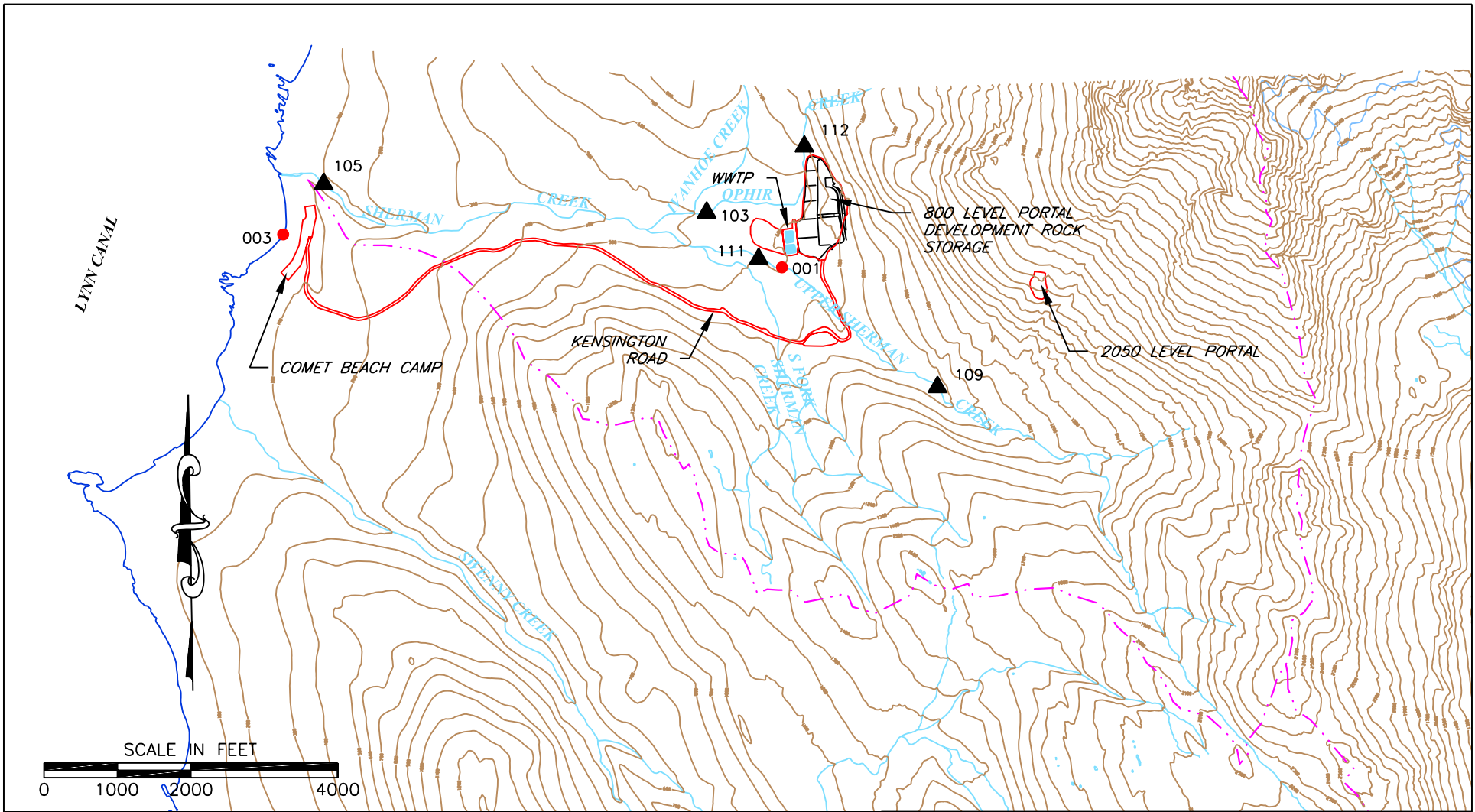
**KC HARVEY, LLC**  
 SOIL AND WATER RESOURCE CONSULTANTS  
 BOZEMAN MONTANA 406-585-7402

FILE NO.  
 BASINS-b.DWG

DATE MAY 2005

REV  
 1

FIGURE NO. 4



**LEGEND**

- 002 NPDES OUTFALL
- ▲ SL-E RECEIVING WATER MONITORING POINT
- - - DRAINAGE BASIN BOUNDARY

CLIENT/PROJECT  
 COEUR ALASKA INC./KENSINGTON PROJECT

FRESH WATER MONITORING SITES  
 SHERMAN CREEK DRAINAGE

**KC HARVEY, LLC**  
 SOIL AND WATER RESOURCE CONSULTANTS  
 BOZEMAN MONTANA 406-585-7402

FILE NO. BASINS-b.DWG	REV 1
DATE MAY 2005	FIGURE NO. 5