

U P H O L S T E R Y C A T A L O G



COLORWORKS™ IN THE OFFICE

The Office Furniture Group (OFG) is pleased to announce the next generation of a program for color coordinating your upholstered furniture products. Whether you are decorating one office, or an entire floor of offices, ColorWorks™ makes it easy to put together a magnificent palette of fabrics that work together.

From traditional prints and solids to simple dobby and intricate jacquards, OFG's ColorWorks™ upholstery program takes the guess work out of matching fabrics. ColorWorks™ was created with mixing and matching in mind, so that these fabrics can be used to build a diverse and attractive color scheme through the entire office.

WHAT'S INSIDE

This brochure will introduce you to the versatile ColorWorks™ program by displaying a summary of its component collections. They include: FedFast Strings Collection, Strings Coordinates Group I, Value Terratex Recycled Series I and II, and Waste Not Recycled Coordinates, and the No Strings Attached Leather Collection. Easy to reference specifications and care information are provided for each collection. As you review the collections, you will quickly see why we call it ColorWorks™. Each color range and pattern was carefully selected to coordinate with other collections and groups, while using a consistent and dynamic color format throughout, making the process simple.

ORDERING IS SIMPLE

This brochure of photo color cards was created to assist in fabric and leather selections when specifying OFG seating. Each photo color card collection in this brochure represents an actual sample card you can order to view and touch. To order a sample card, call the OFG Customer Service Center, **800-827-3168**, or go to **www.unicor.gov** on line. Use the stock numbers listed under the collection name when ordering.

Upholstery memo samples (8" x 10") are available by contacting the OFG upholstery vendor, Mayer-Paetz, Inc. Leather samples are available through the OFG leather vendor, Spinneybeck. See specific instructions on each collection for ordering details.

NOTE: Each collection has a pricing group associated to that specific card. These pricing groups correspond to the pricing in the Overture Seating Price List.

F E D F A S T S T R I N G S C O L L E C T I O N

U P H O L S T E R Y
S T A N D A R D P R I C I N G
G R O U P 1

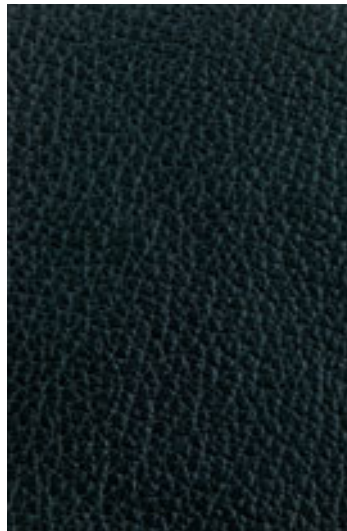
L E A T H E R
P R I C E U P G R A D E

The UNICOR FedFast Strings Collection consists of three solids with two coordinating colorways. The colors chosen are classic with a progressive direction.

Combined with one leather choice, this collection gives you the variety to create a complementary environment with a quick, order-to-delivery timeframe.

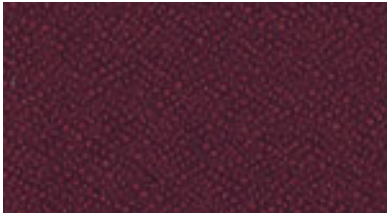


COMPANION 10
7578 Navy



LEATHER
7540 Black

FEDFAST
STRINGS
COLLECTION



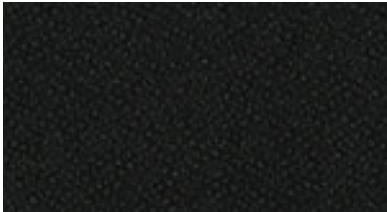
FOUNDATION 10
3500 Wine



FOUNDATION 10
3511 Sapphire



COMPANION 10
7578 Navy



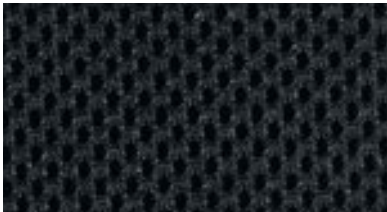
FOUNDATION
3501 Ebony



LEATHER
7540 Black



CARAT
7612 Granite



CXO SEAT PANEL
0301 Black Web



CXO BACK PANEL
0301 Black Web



FREEDOM CHAIR
00 Black Weave

FEDFAST STRINGS COLLECTION

SPECIFICATIONS

STANDARD PRICING GROUP 1

PATTERN 54"	FIBER CONTENT	WEIGHT/ LIN. YD.	PATTERN REPEAT	FINISH	SURFACE ABRASION WYZENBEEK	TENSILE STRENGTH	LIGHT-FASTNESS	FLAMMABILITY	CLEANING CODE
FOUNDATION 10	100% Recycled Polyester	13.5 oz.	None	Teflon	Exceeds 1,000,000 Double Rubs	Warp 368 Lbs. Fill 339 Lbs.	Exceeds 40 Hrs.	Cal. 117-E UFAC BIFMA NFPA 260 ASTM E-84	WS
COMPANION 10	52% Nylon 48% Recycled Polyester	9 oz.	H 2" V 2"	Teflon	Exceeds 159,000 Double Rubs	Warp 140 Lbs. Fill 180 Lbs.	Exceeds 40 Hrs.	Cal. 117-E UFAC BIFMA NFPA 260	WS
CARAT	52% Nylon 48% Recycled Polyester	9 oz.	H .75" V .85"	Teflon	Exceeds 159,000 Double Rubs	Warp 140 Lbs. Fill 180 Lbs.	Exceeds 40 Hrs.	Cal. 117-E UFAC BIFMA NFPA 260	WS



Phone (317) 267-2626
Fax (317) 267-2629

- **WS: Water/Solvent Cleaner** - Spot clean, with a mild solvent, an upholstery shampoo, or the foam from a mild detergent. When using a solvent or dry cleaning product follow instructions carefully and clean only in a well ventilated room. Avoid any product that contains carbon tetrachloride or other toxic materials. With either method, pretest a small area before proceeding.
- All patterns should be upholstered as shown on the card.



Fabric "UP THE ROLL" or "REGULAR" Position



Fabric "RAILROADED" or "TOP TO SELVAGE" Position

- *There may be variation between printed photographs and actual fabric samples. Actual sample can be obtained from our fabric contractor by faxing your request to (317) 267-2629. The sample will be mailed the next business day. If express service is required, please include your Federal Express account number.*
- UNICOR's fabrics far exceed ACT (Association of Contract Textiles) commercial standards.

FEDFAST NO STRINGS ATTACHED LEATHER COLLECTION

SPECIFICATIONS

PRICE UPGRADE LEATHER

PATTERN	FIBER CONTENT	WEIGHT/ LIN. YD.	PATTERN REPEAT	FINISH	SURFACE ABRASION WYZENBEEK	TENSILE STRENGTH	LIGHT-FASTNESS	FLAMMABILITY	CLEANING CODE
LEATHER	Aniline dyed leather	2.75 oz./ sq. ft.	None	Breathable Protective Finish	Abrasion: 1,000+ cycles Flex: 60,000 cycles	150 Lbs.	Exceeds 72 Hrs.	Cal. 117-E	W

Spinneybeck

Phone (800) 482-7777
Fax (716) 446-2396

- **W: Water-Based Cleaner** - Spot clean, using the foam only from a water based cleaning agent such as a mild detergent or non-solvent upholstery shampoo product. Apply foam with a soft brush in a circular motion. Vacuum when dry. Pretest a small area before proceeding.
- All patterns should be upholstered as shown on the card.

- *There may be variation between printed photographs and actual leather samples. Actual sample can be obtained from our leather contractor by faxing your request to (716) 446-2396. The sample will be mailed the next business day. If express service is required, please include your Federal Express account number.*
- UNICOR's fabrics far exceed ACT (Association of Contract Textiles) commercial standards.

STRINGS COORDINATES GROUP I

STANDARD PRICING
GROUP 1

This collection may stand alone, however the total offering lends itself to any environment with crossover coordination from the FedFast Strings Collection through the entire Strings Collection. The broad spectrum of this collection, combined with the UNICOR Chords Stock Panel Fabric Program, allows customers to accessorize any facility with relative ease.

Strings Coordinates Group I has been designed in the same basic color sequence based on the color spectrum-red, burgundy, plum, blue, green, gold, beige, granite, and black. Shades of these colors vary in each Collection.

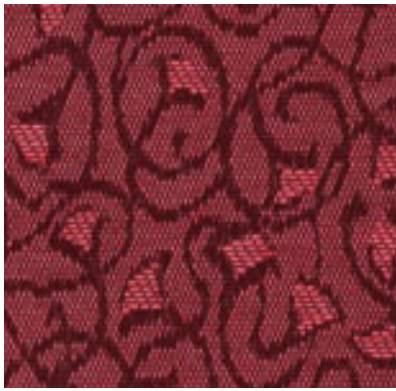
Strings Coordinates Group I is a color coordinated collection of 24 sku's with colors in a classic, yet progressive direction. The color ranges and patterns were designed to coordinate with all collections for simple cross over applications.

Special consideration was given for task seating performance with all 5 patterns exceeding a minimum of 80,000 to as much as 1,000,000 double rubs.

All patterns contain 46 to 60% recycled polyester.



CLEMATIS
UFB7638 Sand



CLEMATIS
UFB7637 Cayenne



CARAT
UFB7617 Cayenne



CAPE 10
UFB7607 Cayenne



CLARITY
UFB7620 Amber



COMPANION 10
UFB7582 Cayenne



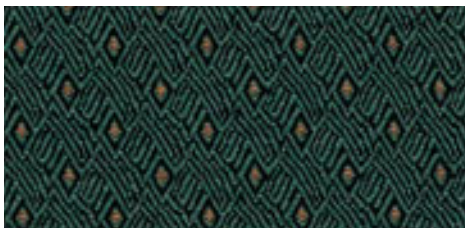
CLARITY
UFB7621 Citrine



CLEMATIS
UFB7634 Sherwood



CARAT
UFB7618 Ivy



CLARITY
UFB7624 Tourmaline



CAPE 10
UFB7597 Hunter



COMPANION 10
UFB7581 Ivy



CLARITY
UFB7622 Jade



CLEMATIS
UFB7638 Sand



CARAT
UFB7613 Cornsilk



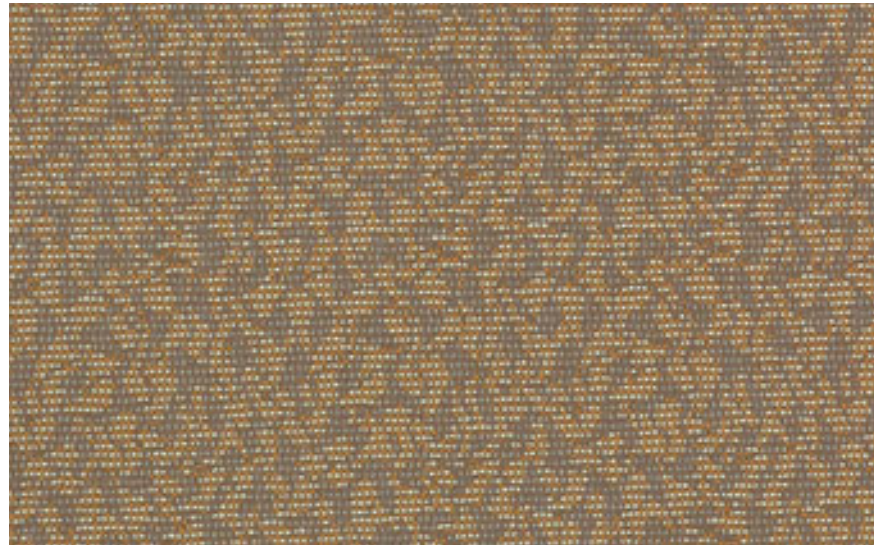
CAPE 10
UFB7603 Cornsilk



CLEMATIS
UFB7633 Sun Glow



CAPE 10
UFB7606 Sand



COMPANION 10
UFB7577 Khaki



CARAT
UFB7612 Granite



CLEMATIS
UFB7632 Granite



CAPE 10
UFB7596 Java



CLARITY
UFB7627
Black Pearl



CAPE 10
UFB7601 Graphite



COMPANION 10
UFB7575 Granite

STRINGS COORDINATES GROUP I

SPECIFICATIONS

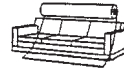
STANDARD PRICING
GROUP 1

PATTERN 54"	FIBER CONTENT	WEIGHT/LIN. YD.	PATTERN REPEAT	FINISH	SURFACE ABRASION WYZENBEEK	TENSILE STRENGTH	LIGHT-FASTNESS	FLAMMABILITY	CLEANING CODE
CAPE 10	54% Nylon 46% Recycled Polyester	8 oz.	None	Teflon	Exceeds 174,000 Double Rubs	Warp 130 Lbs. Fill 150 Lbs.	Exceeds 60 Hrs.	Cal. 117-E UFAC BIFMA NFPA 260	WS
CARAT	52% Nylon 48% Recycled Polyester	8 oz.	H .75" V .85"	Teflon	Exceeds 159,000 Double Rubs	Warp 120 Lbs. Fill 140 Lbs.	Exceeds 60 Hrs.	Cal. 117-E UFAC BIFMA NFPA 260	WS
CLARITY	52% Olefin 48% Recycled Polyester	7.8 oz.	H .5625" V .6878"	Teflon	Exceeds 80,000 Double Rubs	Warp 120 Lbs. Fill 180 Lbs.	Exceeds 60 Hrs.	Cal. 117-E UFAC BIFMA NFPA 260	W
CLEMATIS	60% Recycled Polyester 40% Olefin	10.3 oz.	H 7.5" V 15"	Teflon	Exceeds 100,000 Double Rubs	Warp 222 Lbs. Fill 225 Lbs.	Exceeds 40 Hrs.	Cal. 117-E UFAC BIFMA NFPA 260	WS
COMPANION 10	52% Nylon 48% Recycled Polyester	8 oz.	H 2" V 2"	Teflon	Exceeds 159,000 Double Rubs	Warp 140 Lbs. Fill 180 Lbs.	Exceeds 50 Hrs.	Cal. 117-E UFAC BIFMA NFPA 260	WS



Phone (317) 267-2626
Fax (317) 267-2629

- **W: Water-Based Cleaner** - Spot clean, using the foam only from a water based cleaning agent such as a mild detergent or non-solvent upholstery shampoo product. Apply foam with a soft brush in a circular motion. Vacuum when dry. Pretest a small area before proceeding.
- **WS: Water/Solvent Cleaner** - Spot clean, with a mild solvent, an upholstery shampoo, or the foam from a mild detergent. When using a solvent or dry cleaning product follow instructions carefully and clean only in a well ventilated room. Avoid any product that contains carbon tetrachloride or other toxic materials. With either method, pretest a small area before proceeding.
- All patterns should be upholstered as shown on the card.



Fabric "UP THE ROLL" or "REGULAR" Position



Fabric "RAILROADED" or "TOP TO SELVAGE" Position

- There may be variation between printed photographs and actual fabric samples. Actual sample can be obtained from our fabric contractor by faxing your request to (317) 267-2629. The sample will be mailed the next business day. If express service is required, please include your Federal Express account number.
- UNICOR's fabrics far exceed ACT (Association of Contract Textiles) commercial standards.

VALUE
TERRATEX
RECYCLED
SERIES I & II

STANDARD PRICING
GROUP 1 & 2

It does not get any easier than this! Four patterns, 44 color options that are classic in nature with a progressive direction. The color ranges and patterns are designed to coordinate easily. And – everything is 100% Recycled Polyester at Group 1 and Group 2 pricing.



CONSTRUCTURE
UFB2524 Sherwood

LINKS - 100% RECYCLED TERRATEX



UFB2611 Sapphire



UFB2615
Persimmon



UFB2609
Brick



UFB2616
Burgundy



UFB2620
Magenta



UFB2612
Purple



UFB2617
Blue Mist



UFB2619
Capri



UFB2610
Forest



UFB2614
Khaki



UFB2608
Java

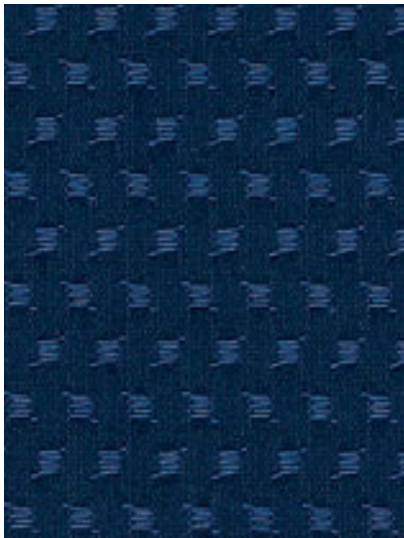


UFB2618
Sandstone



UFB2613
Black

ELECTRON - 100% RECYCLED TERRATEX



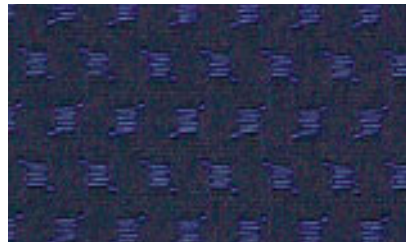
UFB2534 Navy



UFB2538 Cayenne



UFB2532 Ruby



UFB2537 Plum



UFB2533 Ivy



UFB2536 Chamois



UFB2531 Java



UFB2535 Graphite

VALUE TERRATEX RECYCLED SERIES I & II

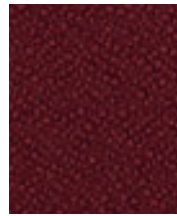
FOUNDATION 10 - 100% RECYCLED TERRATEX



UFB3511 Sapphire



UFB6419 Terra Cotta



UFB3515 Cayenne



UFB3500 Wine



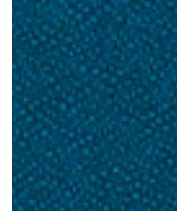
UFB3512 Merlot



UFB3506 Concord



UFB3517 Blue Mist



UFB6430 Capri



UFB3503 Peacock



UFB3513 Sherwood



UFB3516 Hunter



UFB3526 Cornsilk



UFB3527 Jodhpurs



UFB3510 Mercury



UFB3501 Ebony

CONSTRUCTURE - 100% RECYCLED TERRATEX



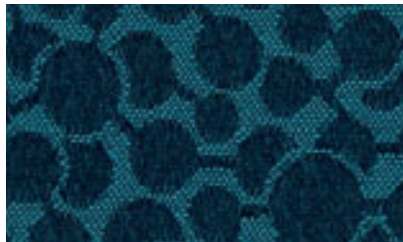
UFB2525 Navy



UFB2529 Cherry



UFB2522 Magenta



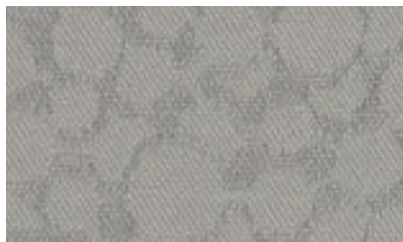
UFB2523 Saxony



UFB2526 Plum



UFB2524 Sherwood



UFB2528 Mercury



UFB2527 Graphite

V A L U E T E R R A T E X
R E C Y C L E D S E R I E S I & I I

S P E C I F I C A T I O N S

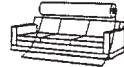
STANDARD PRICING
GROUP 1 & 2

PATTERN 54"	FIBER CONTENT	WEIGHT/ LIN. YD.	PATTERN REPEAT	SURFACE ABRASION	TENSILE WYZENBEEK	LIGHT- STRENGTH	FLAMMABILITY FASTNESS	CLEANING CODE
CONSTRUCTURE	100% Recycled Polyester	9.28 oz.	H 3.6875" V 3.375"	Exceeds 190,000 Double Rubs	Warp 286 Lbs. Fill 132 Lbs.	Exceeds 60 Hrs.	Cal. 117-E UFAC BIFMA	WS
ELECTRON	100% Recycled Polyester	8.97 oz.	H .5625" V .3125"	Exceeds 90,000 Double Rubs	Warp 228 Lbs. Fill 128 Lbs.	Exceeds 60 Hrs.	Cal. 117-E UFAC BIFMA	WS
FOUNDATION 10	100% Recycled Polyester	13.9 oz.	None	Exceeds 1,000,000 Double Rubs	Warp 337 Lbs. Fill 324 Lbs.	Exceeds 40 Hrs.	Cal. 117-E UFAC BIFMA	WS
LINKS	100% Recycled Polyester	9.78 oz.	None	Exceeds 50,000 Double Rubs	Warp 259 Lbs. Fill 298 Lbs.	Exceeds 60 Hrs.	Cal. 117-E UFAC BIFMA	WS



Phone (317) 267-2626
Fax (317) 267-2629

- **WS: Water/Solvent Cleaner** - Spot clean, with a mild solvent, an upholstery shampoo, or the foam from a mild detergent. When using a solvent or dry cleaning product follow instructions carefully and clean only in a well ventilated room. Avoid any product that contains carbon tetrachloride or other toxic materials. With either method, pretest a small area before proceeding.
- All patterns should be upholstered as shown on the card.



Fabric "UP THE ROLL" or "REGULAR" Position



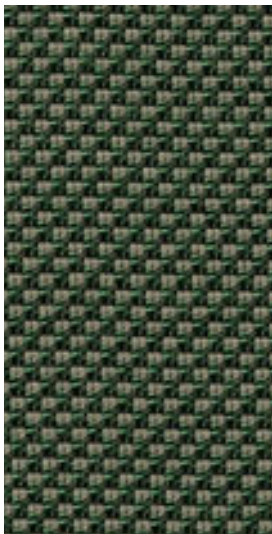
Fabric "RAILROADED" or "TOP TO SELVAGE" Position

- There may be variation between printed photographs and actual fabric samples. Actual sample can be obtained from our fabric contractor by faxing your request to (317) 267-2629. The sample will be mailed the next business day. If express service is required, please include your Federal Express account number.
- UNICOR's fabrics far exceed ACT (Association of Contract Textiles) commercial standards.
- Passes NFPA 260.

WASTE NOT RECYCLED COORDINATES

**PRICE UPGRADE
GROUP 5**

The name says it all for this 100% Recycled Polyester collection that offers 6 patterns and a multitude of color choices for the discerning customer. Patterns range from simple action plains, small and medium scale geometrics, an attractive grid-look and a small scale leaf design, all of which are non-gendered and provide an array of design possibilities for many environments. This is the next generation of recycled upholstery fabrics that are alive and bright, taking inspiration from colors in nature – charcoal, gold and purple blue ocean.



WASTE NOT
UFB4538 DIII

SPECIFICATIONS

**PRICE UPGRADE
GROUP 5**

PATTERN 54"	FIBER CONTENT	WEIGHT/ LIN. YD.	PATTERN REPEAT	SURFACE ABRASION	TENSILE WYZENBEEK	LIGHT-STRENGTH	FLAMMABILITY FASTNESS	CLEANING CODE
A NEW ERA	100% Recycled Polyester	16.5 oz.	Non Matching	Exceeds 45,000 Double Rubs	Warp 99 Lbs. Fill 99 Lbs.	Exceeds 40 Hrs.	Cal. 117-E UFAC NFPA 260	WS
FULL CIRCLE	100% Recycled Polyester	16 oz.	H 13.5" V 13.71"	Exceeds 48,000 Double Rubs	Warp 100 Lbs. Fill 100 Lbs.	Exceeds 40 Hrs.	Cal. 117-E UFAC NFPA 260	WS
HARMONY	100% Recycled Polyester	16 oz.	H 1.688" V 1.126"	Exceeds 54,000 Double Rubs	Warp 100 Lbs. Fill 100 Lbs.	Exceeds 40 Hrs.	Cal. 117-E UFAC NFPA 260	WS
RESOLUTION	100% Recycled Polyester	16.5 oz.	Non Matching	Exceeds 61,000 Double Rubs	Warp 100 Lbs. Fill 100 Lbs.	Exceeds 40 Hrs.	Cal. 117-E UFAC NFPA 260	WS
WASTE NOT	100% Recycled Polyester	15.5 oz.	Non Matching	Exceeds 60,000 Double Rubs	Warp 100 Lbs. Fill 100 Lbs.	Exceeds 40 Hrs.	Cal. 117-E UFAC NFPA 260	WS
WILDWOOD	100% Recycled Polyester	16 oz.	H 2.25" V 6.49"	Exceeds 57,000 Double Rubs	Warp 99 Lbs. Fill 99 Lbs.	Exceeds 40 Hrs.	Cal. 117-E UFAC NFPA 260	WS



Phone (317) 267-2626
Fax (317) 267-2629

- **WS: Water/Solvent Cleaner** - Spot clean, with a mild solvent, an upholstery shampoo, or the foam from a mild detergent. When using a solvent or dry cleaning product follow instructions carefully and clean only in a well ventilated room. Avoid any product that contains carbon tetrachloride or other toxic materials. With either method, pretest a small area before proceeding.
- All patterns should be upholstered as shown on the card.



Fabric "UP THE ROLL" or "REGULAR" Position

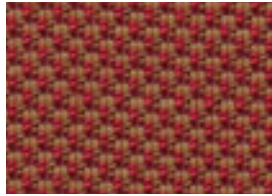


Fabric "RAILROADED" or "TOP TO SELVAGE" Position

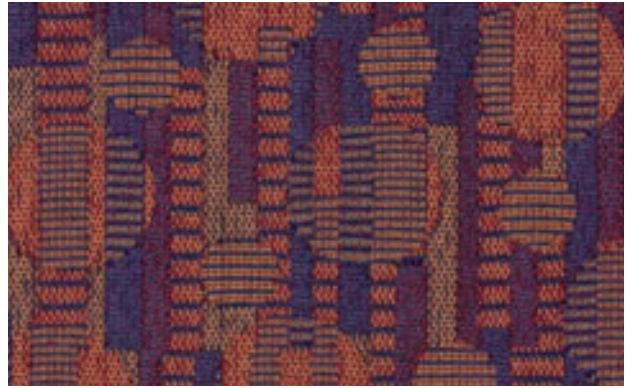
- There may be variation between printed photographs and actual fabric samples. Actual sample can be obtained from our fabric contractor by faxing your request to (317) 267-2629. The sample will be mailed the next business day. If express service is required, please include your Federal Express account number.
- UNICOR's fabrics far exceed ACT (Association of Contract Textiles) commercial standards.
- All meet BIFMA.



RESOLUTION
UFB2674 Poppy



WASTE NOT
UFB4543 Cayenne



FULL CIRCLE
UFB2567 Wildflower



WILDWOOD
UFB4551 Mahogany



WASTE NOT
UFB4537 Bergamot Red



A NEW ERA
UFB2414 Ruby



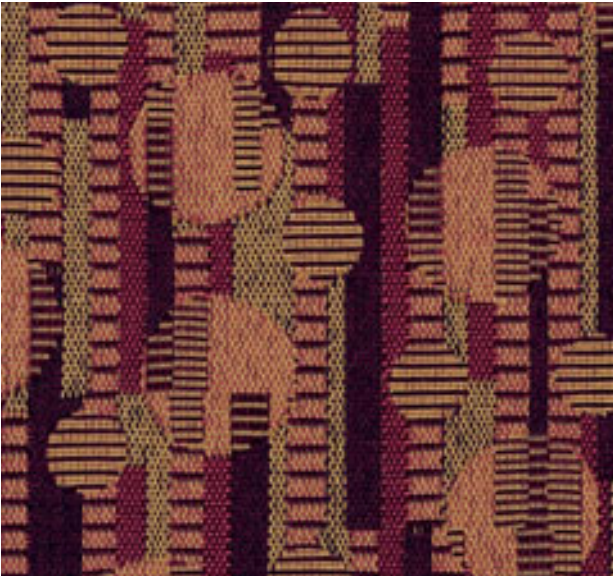
HARMONY
UFB2575 Raspberry



A NEW ERA
UFB6439 Garnet



HARMONY
UFB2580 Passion



FULL CIRCLE
UFB2571 Autumn



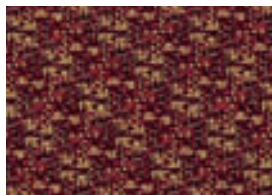
RESOLUTION
UFB2676 Thistle



FULL CIRCLE
UFB2569 Cheer



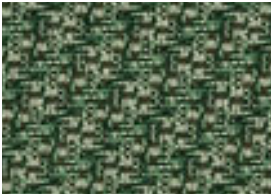
WILDWOOD
UFB4555 Rosewood



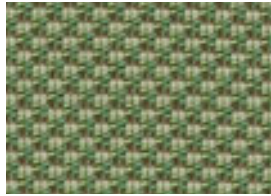
RESOLUTION
UFB2668 Peony



WILDWOOD
UFB4553 Dusk



RESOLUTION
UFB2669 Ivy



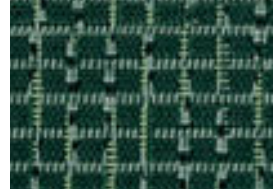
WASTE NOT
UFB4544 Celery Seed



FULL CIRCLE
UFB2568 Meadow



WILDWOOD
UFB4552 Spruce



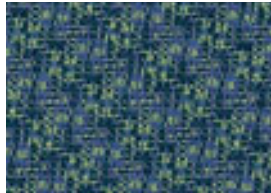
A NEW ERA
UFB6443 Emerald



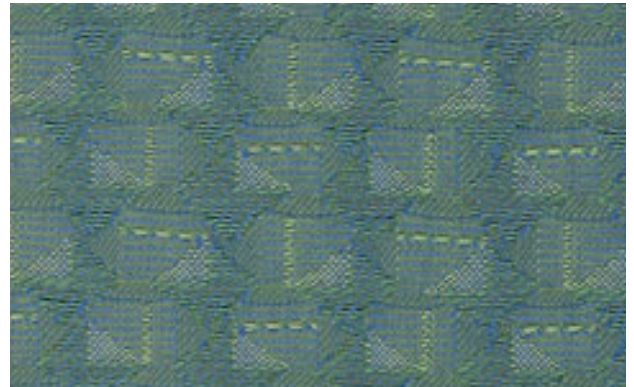
WASTE NOT
UFB4538 Dill



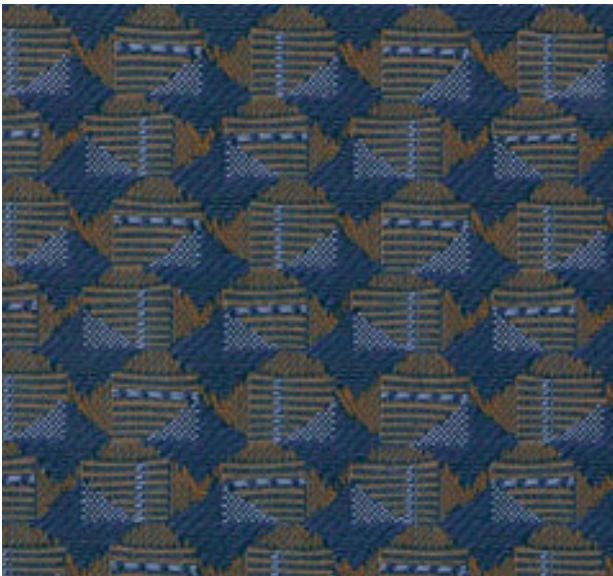
WASTE NOT
UFB4546 Biberry Aqua



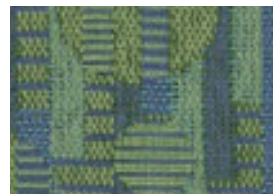
RESOLUTION
UFB2677 Ageratum



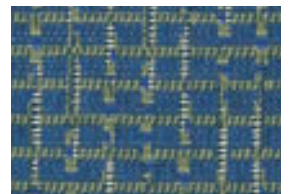
HARMONY
UFB2581 Aquamarine



HARMONY
UFB2577 Como



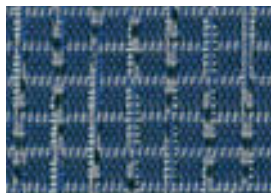
FULL CIRCLE
UFB2572 Capri



A NEW ERA
UFB6441 Aquamarine



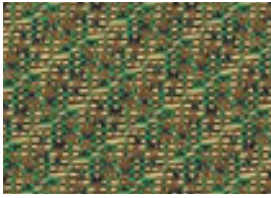
WASTE NOT
UFB4539 Echinacea Blue



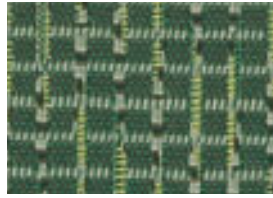
A NEW ERA
UFB6436 Sapphire



WILDWOOD
UFB4556 Spring



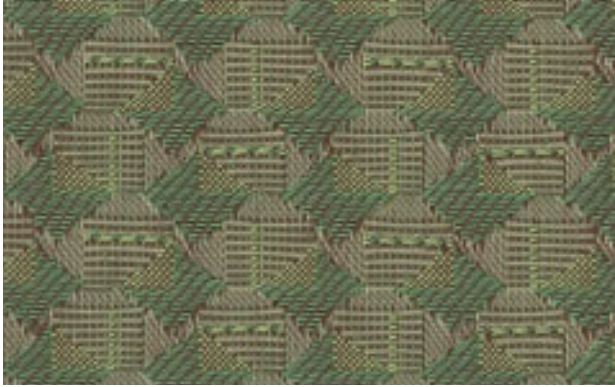
RESOLUTION
UFB2675 Sweet Pea



A NEW ERA
UFB6440 Peridot



WILDWOOD
UFB4554 Birch



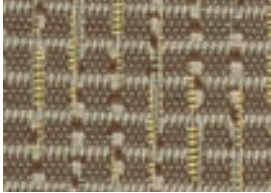
HARMONY
UFB2576 Lichen



RESOLUTION
UFB2672 Foxglove



HARMONY
UFB2579 Sunshade



A NEW ERA
UFB6444 Citrine



WASTE NOT
UFB4541 Curry



FULL CIRCLE
UFB2566 Granite



WILDWOOD
UFB4550 Ebony



WASTE NOT
UFB4536 Flax Seed



RESOLUTION
UFB2671 Anemone



FULL CIRCLE
UFB2570 Sandstone



A NEW ERA
UFB6437 Onyx



HARMONY
UFB2578 Shadow

NO STRINGS ATTACHED LEATHER COLLECTION

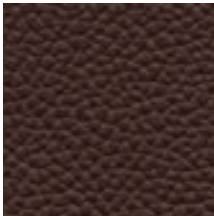
**PRICE UPGRADE
LEATHER**

With the choice of 13 different colors, our leather comes in two grain textures: Volo has a slightly raised texture while the Verona grain is more pronounced.



CLAY
7545

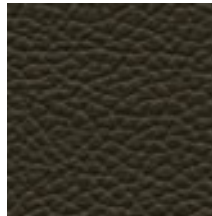
* FedFast color



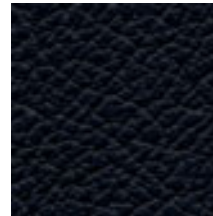
STALLION
7551



TAN
7544



DEEP OLIVE
7552



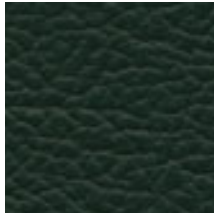
BLACK*
7540



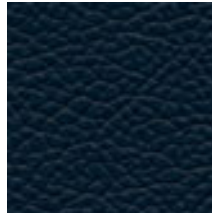
BURGUNDY
7541



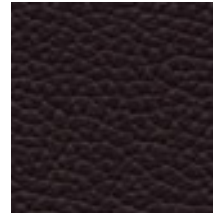
LICHEN
7553



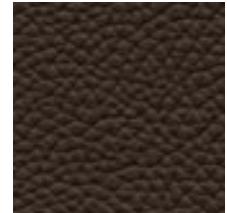
GREEN
7548



OCEAN DEEP
7554



BROWN
7546



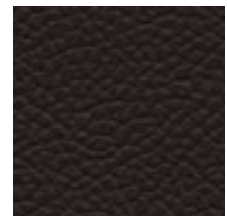
AMERICAN GOTHIC
7555

NO STRINGS ATTACHED LEATHER COLLECTION

**PRICE UPGRADE
LEATHER**

SPECIFICATIONS

PATTERN	FIBER CONTENT	WEIGHT/ LIN. YD.	PATTERN REPEAT	FINISH	SURFACE ABRASION WYZENBEEK	TENSILE STRENGTH	LIGHT-FASTNESS	FLAMMABILITY	CLEANING CODE
LEATHER	Aniline dyed leather	2.75 oz./sq. ft.	None	Breathable Protective Finish	Abrasion: 1,000+ cycles Flex: 60,000 cycles	150 Lbs.	Exceeds 72 Hrs.	Cal. 117-E	W



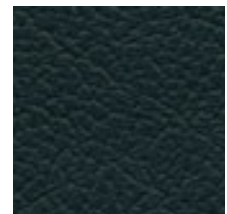
RIVER ROCK
7556

- **W: Water-Based Cleaner** - Spot clean, using the foam only from a water based cleaning agent such as a mild detergent or non-solvent upholstery shampoo product. Apply foam with a soft brush in a circular motion. Vacuum when dry. Pretest a small area before proceeding.
- All patterns should be upholstered as shown on the card.

Spinneybeck

Phone (800) 482-7777
Fax (716) 446-2396

- There may be variation between printed photographs and actual samples. Actual sample can be obtained from our leather contractor by faxing your request to (716) 446-2396. The sample will be mailed the next business day. If express service is required, please include your Federal Express account number.
- UNICOR's fabrics far exceed ACT (Association of Contract Textiles) commercial standards.

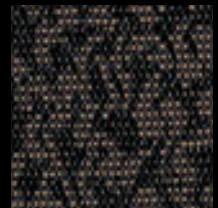
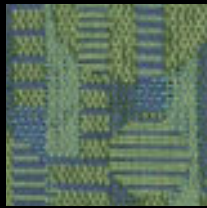
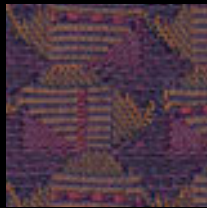
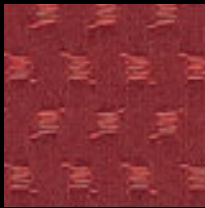


HUNTER GREEN
7549

COLORWORKS AVAILABLE PATTERNS BY PRICE GROUP

GROUP 1	GROUP 2	GROUP 4	GROUP 5	GROUP 6
Cape 10	Caressa	Benefit	Accord	Quintessence
Carat	Constructure	Bulls Eye	A New Era	Shimmer
Clarity	Decade Crepe 10	Caressa Suede	Antique	Virtually
Clematis	Decade Orion 10	Filligree	Branch Out	Virtually Suede
Companion 10	Electron	Framework	City Lights	
Foundation 10	Links	Jekyll & Hyde	Full Circle	
	GROUP 3	Ostrich	Harmony	
	Pisces	Radiance	Leafage	
		Radiance Perforated	Lyric	
		Santa Ana	Mezzano	
			Resolution	
			Savannah 10	
			Side by Side 10	
			Smart Suede	
			Spirit 10	
			Square Root 10	
			Symmetry	
			Syncopation 10	
			Waste Not	
			WildWood	

TO VIEW THIS COLLECTION,
CONTACT YOUR SALES REPRESENTATIVE.



U.S. Department of Justice
Federal Prison Industries, Inc.

320 First Street, N.W.
Washington, DC 20534