



08-0004

Corporate Environmental Programs
General Electric Company
100 Woodlawn Avenue, Pittsfield, MA 01201

December 19, 2000

Dean Tagliaferro
On Scene Coordinator
U.S. Environmental Protection Agency
c/o Weston Environmental Engineering
One Lyman Street
Pittsfield, Massachusetts 01201

**Re: GE-Pittsfield/Housatonic River Site
Upper 1/2-Mile Reach Removal Action (GECD800)
Requested Approval for Intermediate Cutoff Wall in Cell G3**

Dear Mr. Tagliaferro:

As you know, the General Electric Company (GE) is performing investigation activities within and along the banks of the Cell G3 excavation area. To date, 7 soil borings have been installed and approximately 200 cubic yards (cy) of soil have been removed based on visual observations. The locations of these borings as well as the horizontal extent of soils excavated are depicted on Figure 1. Based on the preliminary results of excavation and investigation activities in this area, it appears that a portion of the bank contains materials impacted by coal-tar-related dense non-aqueous phase liquid (DNAPL).

Once investigation activities within and along the banks of Cell G3 are completed and data are evaluated, GE anticipates submitting a summary of the investigation results as well as a proposal to address the presence of DNAPL in Cell G3. Based on previous remediation/source control activities in areas where DNAPL has been observed (i.e., Cell C and Cell G1), GE anticipates that the proposal will include the installation of a sheetpile containment barrier wall (see Figure 1). As a result, GE requests approval to install an intermediate cutoff wall within Cell G3 to isolate the downstream 115 feet of Cell G3 so that excavation/restoration activities in that area may be performed. The approximate location of the intermediate cutoff wall is shown on Figure 1.

It is anticipated that, following EPA's approval, the intermediate cutoff wall within Cell G3 will be installed within a 1- to 2-week time frame assuming that no significant unanticipated obstacles are encountered.

Very truly yours,

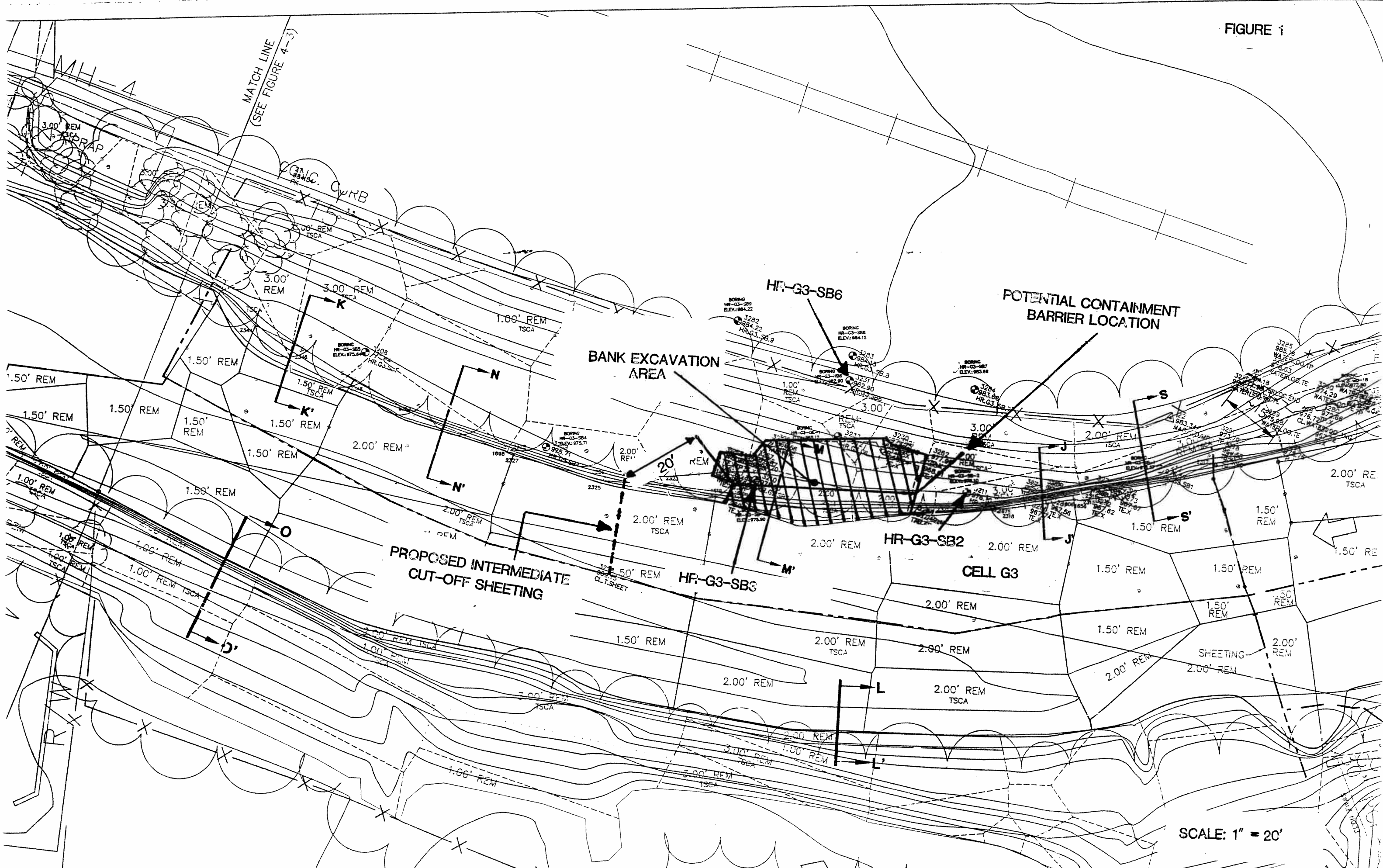
Andrew T. Silfer, P.E.
GE Project Coordinator

Dean Tagliaferro
December 19, 2000
Page 2

Enclosure

cc: M. Barash, DOI
R. Bell, MDEP
J. Bernstein, Bernstein, Cushner & Kimmel
J. Bieke, Shea & Gardner
M. Carroll, GE
T. Conway, EPA
J.L. Cutler, MDEP
Mayor G. Doyle, City of Pittsfield
C. Fredette, CDEP
A. Giedt, NOAA
R. Goff, USACE
S. Gutter, Sidley & Austin
N. Harper, MA AG
W. Horne, GE
H. Inglis, EPA
S. Messur, BBL
K.C. Mitkevicius, USACE
B. Olson, EPA
S. Steenstrup, MDEP
A. Thomas, GE
D. Veilleux, Weston
A. Weinberg, MDEP
D. Young, MA EOE
Public Information Repositories
GE Internal Repositories

FIGURE 1



SCALE: 1" = 20'