



08-0002
SDMS 159167

RECEIVED

Corporate Environmental Programs
General Electric Company
100 Woodlawn Avenue, Pittsfield, MA 01201

DEC 4 2000

BERKSHIRE
REGIONAL PLANNING COMMISSION

R - IV (A) (1)
PUBLIC INVOLVEMENT PLAN (PIP) SUBMISSION
GE-DEP Consent Order
General Electric Company
Housatonic River and Newell Street Consent Order
SA 1-0147, SA 1-0151, SA 1-0157 and SA 1-1085
(River) (Newell I) (Newell II) (Oxbows)

To: Berkshire Athenaeum Public Library Lenox Library
Ref. Department - Madeline Kelly Amy Lafave
1 Wendell Avenue 18 Main Street
Pittsfield, MA 01201 Lenox, MA 01240

Berkshire Regional Planning Simon's Rock College of Bard
Commission Attn.: Joan Goodkind
33 Dunham Mall 84 Alford Road
Pittsfield, MA 01201-6207 Great Barrington, MA 01230

From: GE Pittsfield

Re: Submission of Document(s) to Repositories Under Public Involvement Plan

Date: December 1, 2000

Documents Transmitted:

**GE-Pittsfield/Housatonic River Site
Upper 1/2 Mile Reach Removal Action (GECD800)
Revised Figure 5 for Cell G2 NAPL Investigation Proposal**



08-0002

November 27, 2000

Corporate Environmental Programs
General Electric Company
100 Woodlawn Avenue, Pittsfield, MA 01201

Transmitted Via Hand Delivery and Regular Mail

Dean Tagliaferro
United States Environmental Protection Agency
c/o R.F. Weston, Inc.
10 Lyman Street
Pittsfield, Massachusetts 01201

RECEIVED
DEC 24 2000

BY: _____

**Re: GE-Pittsfield/Housatonic River Site
Upper ½-Mile Reach Removal Action (GECD800)
Revised Figure 5 for Cell G2 NAPL Investigation Proposal**

Dear Mr. Tagliaferro:

Enclosed please find a revised figure (Figure 5) from a document entitled *Results of Cell G2 NAPL Investigation and Proposal to Address Presence of LNAPL in Cell G2*, submitted to the U.S. Environmental Protection Agency (EPA) on November 17, 2000. Based upon your request, this figure has been revised to indicate the location of the former oxbow in the area of Cell G2. Please note that two former oxbow locations are presented on the revised Figure 5; one former oxbow location was obtained from an April 23, 1940 drawing entitled City of Pittsfield Flood Control Plan, and the other was obtained from a historical aerial photograph dated July 3, 1960. Historical aerial photographs dated July 13, 1942 and November 24, 1956 were also reviewed to identify the location of the former oxbow, but do not show any variation from the former oxbow location shown on the July 3, 1960 photograph. The former oxbow location obtained from the July 3, 1960 aerial photograph is considered the best approximation of the oxbow location since it has the best corresponding scale and surrounding reference points. A copy of this photo has also been included for your review.

Please feel free to call me with any questions.

Sincerely,

Andrew T. Silfer, P.E.
GE Project Coordinator

Enclosure

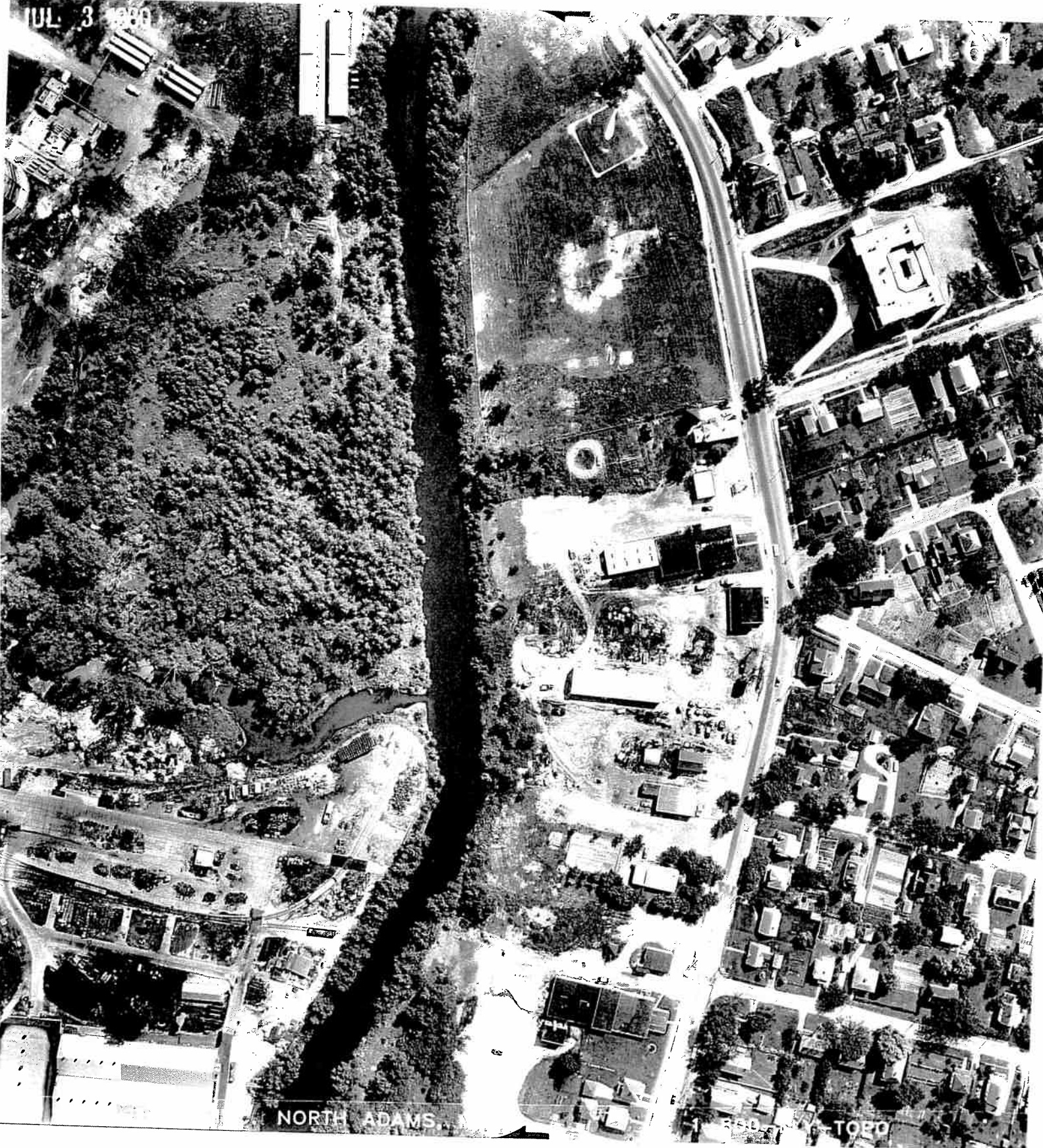
Mr. Dean Tagliaferro

November 28, 2000

Page 2

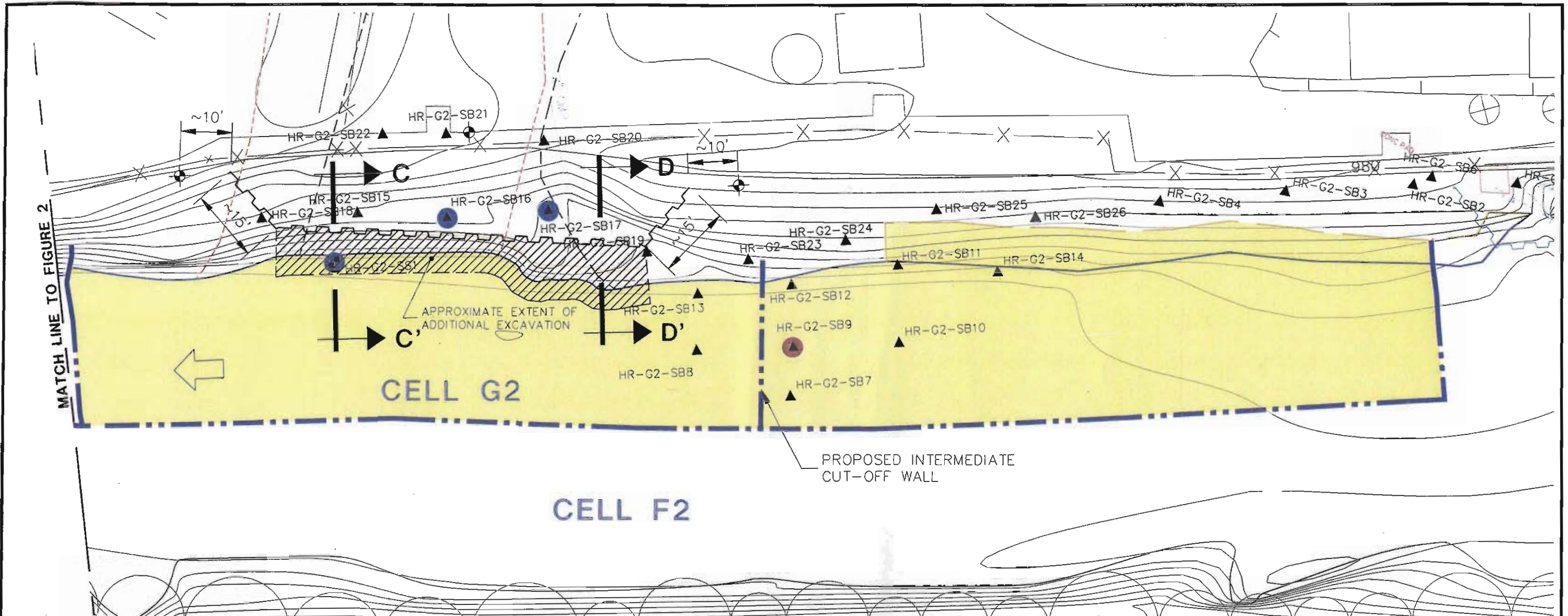
cc: M. Barash, DOI
R. Bell, MDEP
J. Bernstein, Bernstein, Cushner & Kimmel
J. Bieke, Shea & Gardner
M. Carroll, GE
T. Conway, EPA
J.L. Cutler, MDEP
Mayor G. Doyle, City of Pittsfield
C. Fredette, CDEP
A. Giedt, NOAA
R. Goff, USACE
S. Gutter, Sidley & Austin
N. Harper, MA AG
W. Horne, GE
H. Inglis, EPA
T. La Rosa, MA EOE
S. Messur, BBL
K.C. Mitkevicius, USACE
B. Olson, EPA
S. Steenstrup, MDEP
A. Thomas, GE
D. Veilleux, Weston
A. Weinberg, MDEP
Public Information Repositories ECL I-P-IV(A) (1)
GE Internal Repositories

JUL 3 1989



NORTH ADAMS

1 250 TORO

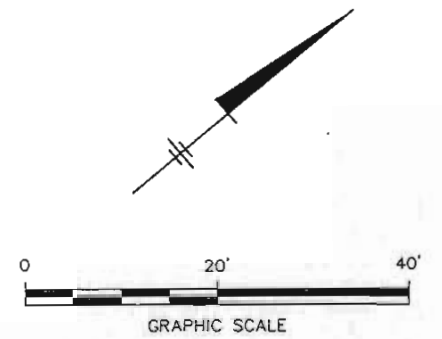


NOTES:

1. MAPPING IS BEST AVAILABLE INFORMATION AS OF 12/10/98 BASED ON MAPPING PROVIDED BY LOCKWOOD MAPPING, INC. PREPARED FROM 1990 AERIAL PHOTOGRAPHY; DATA PROVIDED BY GENERAL ELECTRIC; AND BLASLAND AND BOUCK, P.C. CONSTRUCTION PLANS, RIVERBANK AND RIVER BED TOPOGRAPHIC INFORMATION PROVIDED BY BBL FROM OCTOBER 12-23, 1998 FIELD SURVEY.
2. CELL LOCATIONS AND DISTANCES ARE APPROXIMATE.
3. FORMER OXBOW LOCATION DETERMINED BASED ON JULY 3, 1960 AERIAL PHOTO, AND 4/23/40 DRAWING OF CITY OF PITTSFIELD FLOOD CONTROL PLAN.

LEGEND:

- | | | | |
|--|------------------------------------------|--|--------------------------------------------------------------------------------------------------------------------------|
| | UPPER 1/2-MILE REMOVAL AREAS IN PROGRESS | | PROPOSED MONITORING WELL LOCATION |
| | EXISTING CONTAINMENT BARRIER LOCATION | | PROPOSED ADDITIONAL EXCAVATION TO A MAXIMUM DEPTH (BASED ON VISUAL OBSERVATIONS) OF APPROXIMATELY 6 FEET (ELEVATION 965) |
| | REMOVAL CELL | | FORMER OXBOW LOCATION AS DIGITIZED FROM 1940 MAP OF CITY OF PITTSFIELD FLOOD CONTROL PLAN |
| | SOIL/SEDIMENT BORING | | FORMER OXBOW LOCATION AS DIGITIZED FROM JULY 3, 1960 AERIAL PHOTO |
| | SURFACE SEDIMENT SAMPLE | | |
| | PCB DNAPL OBSERVED | | |
| | COAL TAR OIL POTENTIALLY PRESENT | | |
| | PROPOSED CONTAINMENT BARRIER LOCATION | | |



GENERAL ELECTRIC COMPANY
PITTSFIELD, MASSACHUSETTS
REMEDIAL ACTION - UPPER 1/2-MILE REACH OF
HOUSATONIC RIVER
**CELL G2 NAPL
INVESTIGATION AREA -
PROPOSED ACTIVITIES**

BBL BLASLAND, BOUCK & LEE, INC.
engineers & scientists

FIGURE
5