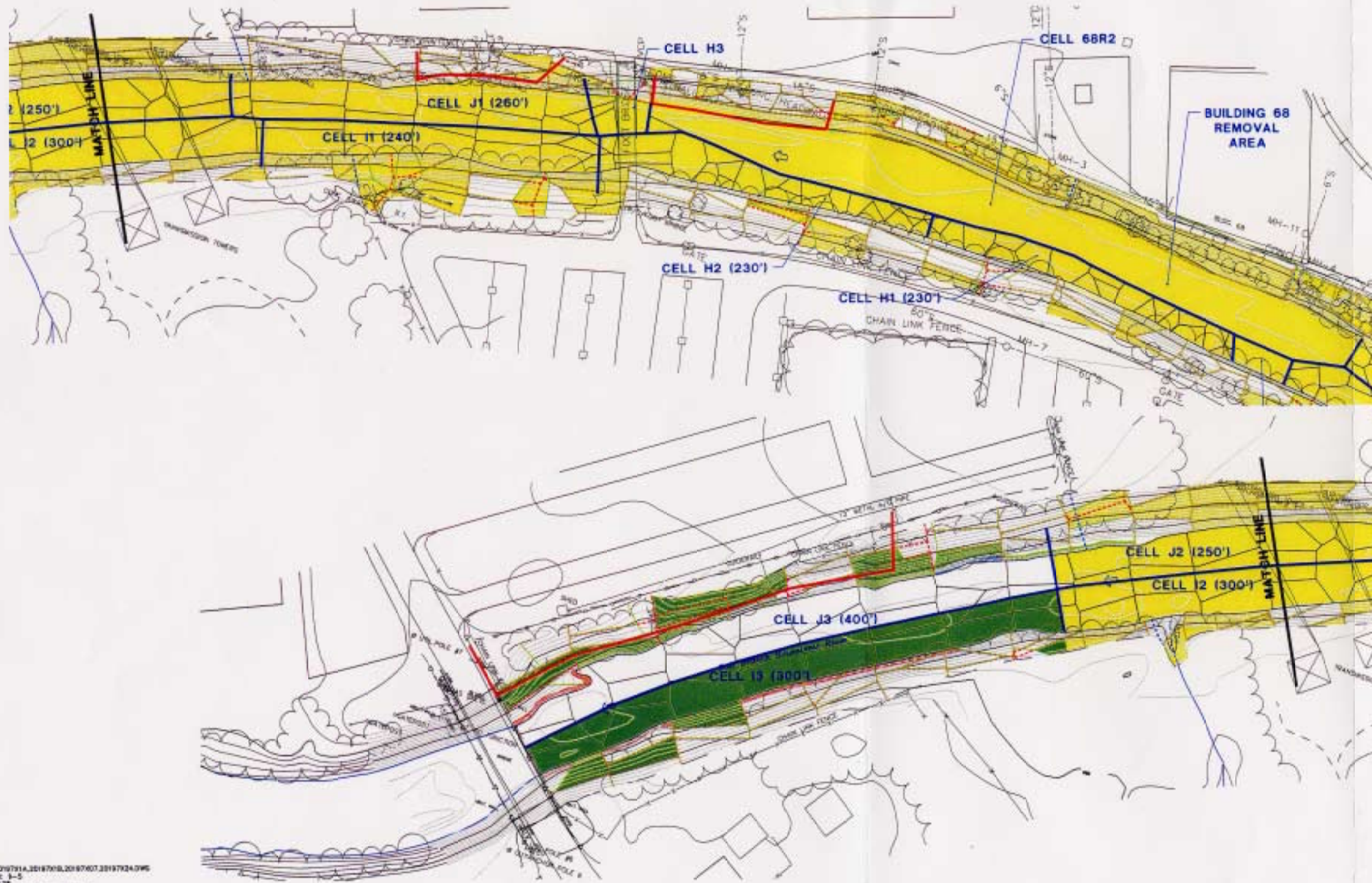


Exhibit A - Upper 1/2 Mile Reach Removal Action

Sediment and Bank Soil Removal Areas (Cells H-J)



- LEGEND:**
- UPPER 1/2-MILE REMOVAL AREAS COMPLETED
 - UPPER 1/2-MILE REMOVAL AREAS IN PROGRESS
 - EXISTING CONTAINMENT BARRIER LOCATION
 - 0'-1' BANK SOIL POLYGON
 - 1'-3' BANK SOIL POLYGON
 - TOP OF BANK
 - CAP AND ARMOR TE-IN BUFFER
 - REMOVAL CELL

- NOTES:**
1. MAPPING IS BEST AVAILABLE INFORMATION AS OF 12/10/98 BASED ON MAPPING PROVIDED BY LOOKWOOD MAPPING, INC. PREPARED FROM 1990 AERIAL PHOTOGRAPHY; DATA PROVIDED BY GENERAL ELECTRIC, AND BLASLAND AND BOUCK, P.C. CONSTRUCTION PLANS, RIVERBANK AND RIVER BED TOPOGRAPHIC INFORMATION PROVIDED BBL FROM OCTOBER 12-23, 1998 FIELD SURVEY.
 2. COORDINATE GRID BASED ON 1927 STATE PLAN COORDINATES.
 3. ELEVATION DATUM REFERENCED TO NGVD 1929.
 4. ALL LOCATIONS AND DISTANCES ARE APPROXIMATE.



S: 2017011A,2018701B,2018701C,2018702A,DW6
 LHM: 1-5
 P: 3128
 5/7/03 219-54-045 R03 P01
 N: 2018702A,2018701C,DW6