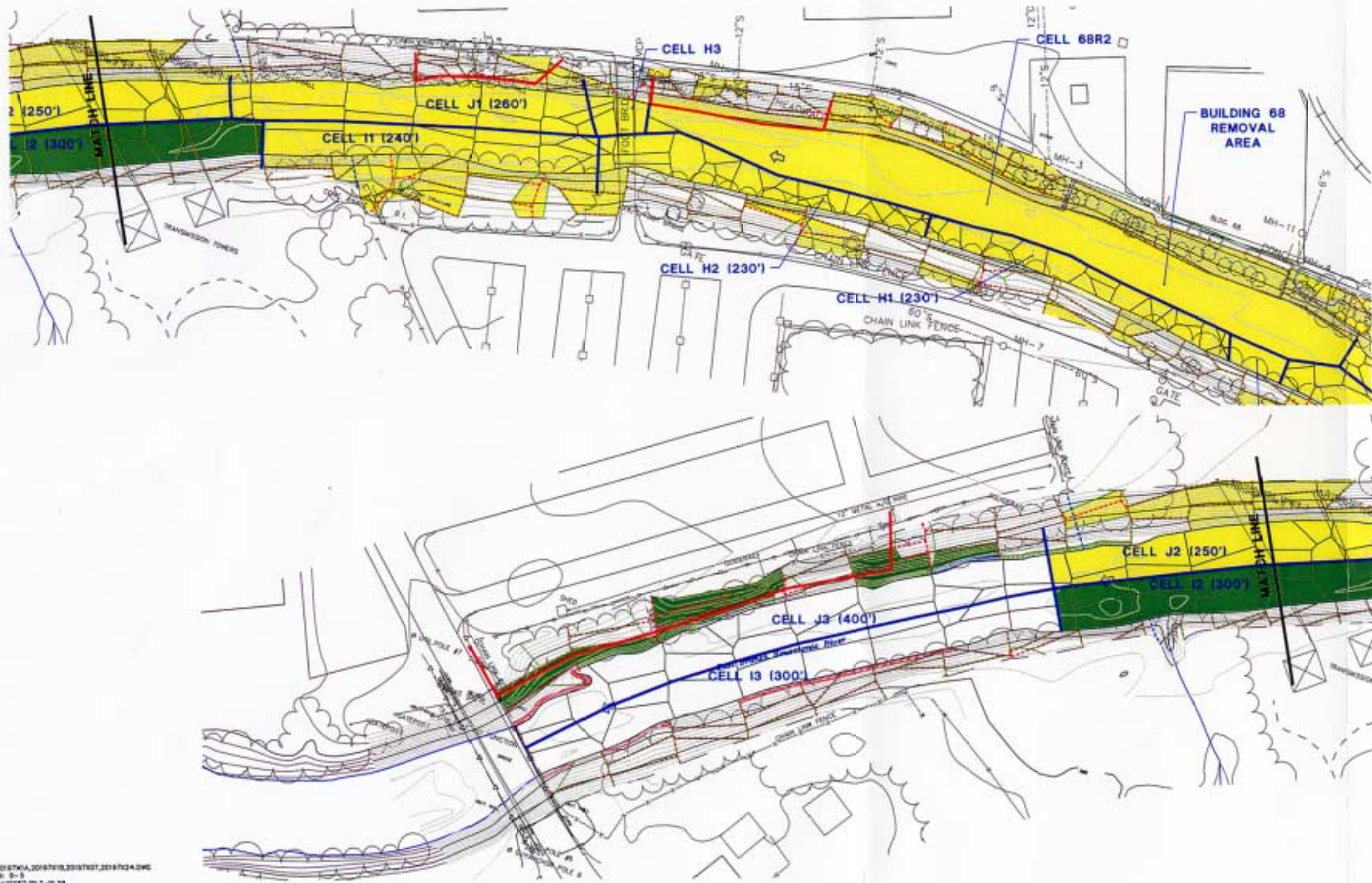


Exhibit A - Upper 1/2 Mile Reach Removal Action

Sediment and Bank Soil Removal Areas (Cells H-J)



N

LEGEND:

- UPPER 1/2-MILE REMOVAL AREAS COMPLETED
- UPPER 1/2-MILE REMOVAL AREAS IN PROGRESS
- EXISTING CONTAINMENT BARRIER LOCATION
- 0'-1' BANK SOIL POLYGON
- 1'-3' BANK SOIL POLYGON
- TOP OF BANK
- CAP AND ARMOR TIE-IN BUFFER
- REMOVAL CELL

- NOTES:**
1. MAPPING IS BEST AVAILABLE INFORMATION AS OF 12/10/98 BASED ON MAPPING PROVIDED BY LOCKWOOD MAPPING, INC. PREPARED FROM 1980 AERIAL PHOTOGRAPHY; DATA PROVIDED BY GENERAL ELECTRIC; AND BLASLAND AND BOUCK, P.C. CONSTRUCTION PLANS, RIVERBANK AND RIVER BED TOPOGRAPHIC INFORMATION PROVIDED BBL FROM OCTOBER 12-23, 1998 FIELD SURVEY.
 2. COORDINATE GRID BASED ON 1927 STATE PLAN COORDINATES.
 3. ELEVATION DATUM REFERENCED TO NGVD 1929.
 4. ALL LOCATIONS AND DISTANCES ARE APPROXIMATE.



X: 2018701A, 2018701B, 2018701C, 2018701D.DWG
 (MARK: 9-1)
 P: 9/20/01/PLT-01.29
 4/16/02 3:19:24-045 829 PDL
 N: 2018701G/2018701H.DWG