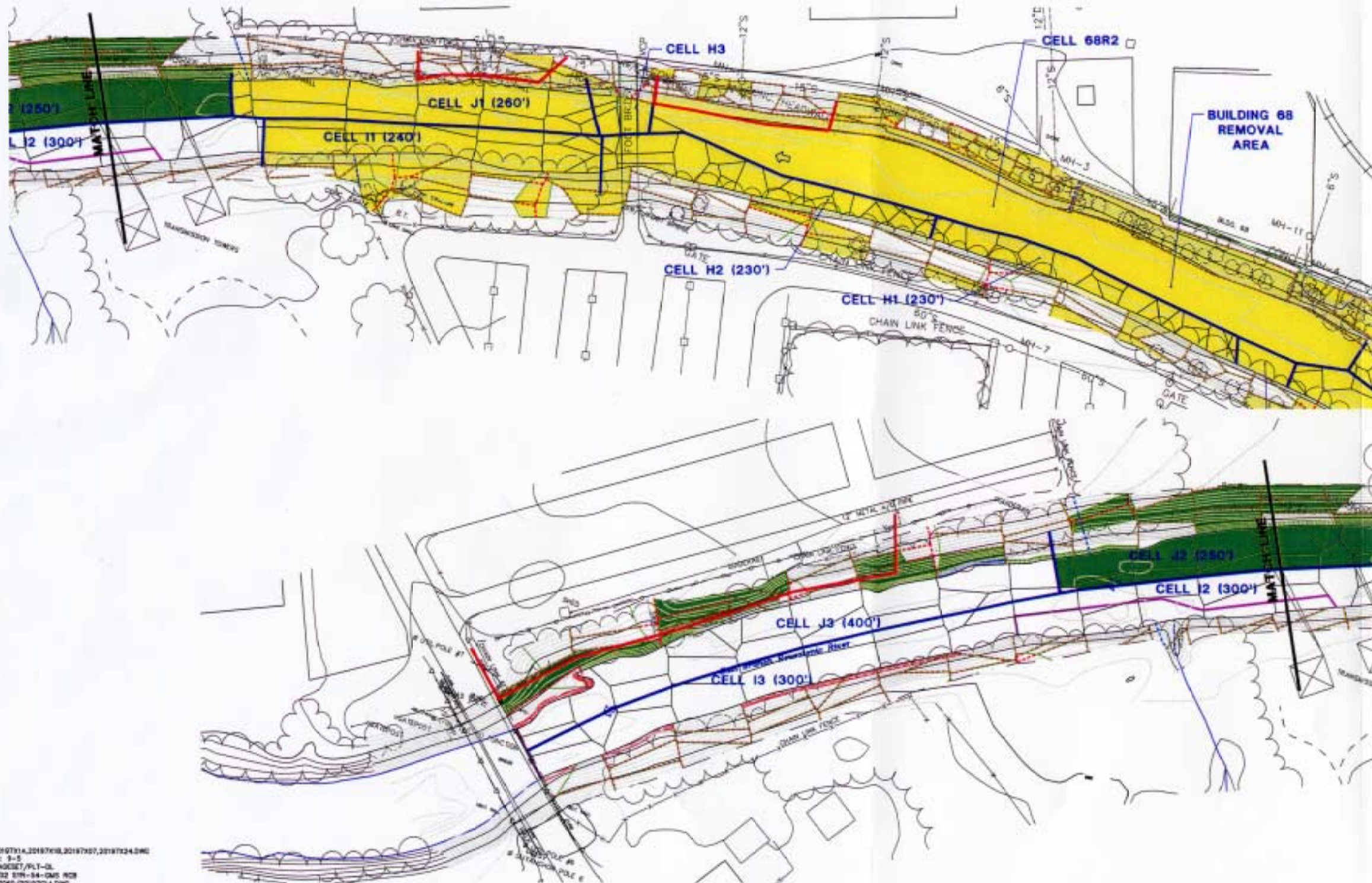


Exhibit A - Upper 1/2 Mile Reach Removal Action

Sediment and Bank Soil Removal Areas (Cells H-J)



- LEGEND:**
- UPPER 1/2-MILE REMOVAL AREAS COMPLETED
 - UPPER 1/2-MILE REMOVAL AREAS IN PROGRESS
 - EXISTING CONTAINMENT BARRIER LOCATION
 - 0'-1' BANK SOIL POLYGON
 - 1'-3' BANK SOIL POLYGON
 - TOP OF BANK
 - CAP AND ARMOR TE-IN BUFFER
 - REMOVAL CELL

- NOTES:**
1. MAPPING IS BEST AVAILABLE INFORMATION AS OF 12/10/98 BASED ON MAPPING PROVIDED BY LOCKWOOD MAPPING, INC. PREPARED FROM 1990 AERIAL PHOTOGRAPHY; DATA PROVIDED BY GENERAL ELECTRIC; AND BLASLAND AND BOUCK, P.C. CONSTRUCTION PLANS, RIVERBANK AND RIVER BED TOPOGRAPHIC INFORMATION PROVIDED BBL FROM OCTOBER 12-23, 1998 FIELD SURVEY.
 2. COORDINATE GRID BASED ON 1927 STATE PLAN COORDINATES.
 3. ELEVATION DATUM REFERENCED TO NGVD 1929.
 4. ALL LOCATIONS AND DISTANCES ARE APPROXIMATE.



E: 20187014, 20187018, 20187017, 20187024.DWG
 LMAX: 9-5
 P: PAGESET/PLT-04
 3/8/02 8:19:54-0MS RCB
 20187006/20187024.DWG
 C:\102_UPPER_HALF_MILE\REPORTS AND PRESENTATIONS\FEBRUARY
 2002_PROGRESS_REPORT\DRAWING\20187007,20187014.DWG