



GE
159 Plastics Avenue
Pittsfield, MA 01201
USA

Transmitted Via Overnight Delivery

May 2, 2006

Ms. Sharon Hayes
United States Environmental Protection Agency
EPA New England
One Congress Street, Suite 1100
Boston, MA 02114-2023

**Re: GE Pittsfield/Housatonic River Site
Buildings 7, 17, 17C, and 19 Demolition and Site Restoration Program (GECD 140)
Ambient Air Monitoring Station Locations**

Dear Ms. Hayes:

This letter serves to provide the U.S. Environmental Protection Agency (EPA) with the revised locations of polychlorinated biphenyl and particulate ambient air monitoring stations at Buildings 7, 17, 17C, and 19 located at the General Electric Company (GE) facility in Pittsfield, Massachusetts. These revisions are in response to EPA's April 12, 2006 comments on GE's original March 27, 2006 letter to EPA. The revised locations of the air monitoring stations are shown on the attached figure. These locations will be utilized for future ambient air monitoring associated with demolition and restoration activities at Buildings 7, 17, 17C, and 19.

Please feel free to contact me with questions or comments.

Sincerely,

John F. Novotny, P.E.
Manager, Facilities and Brownfields Programs

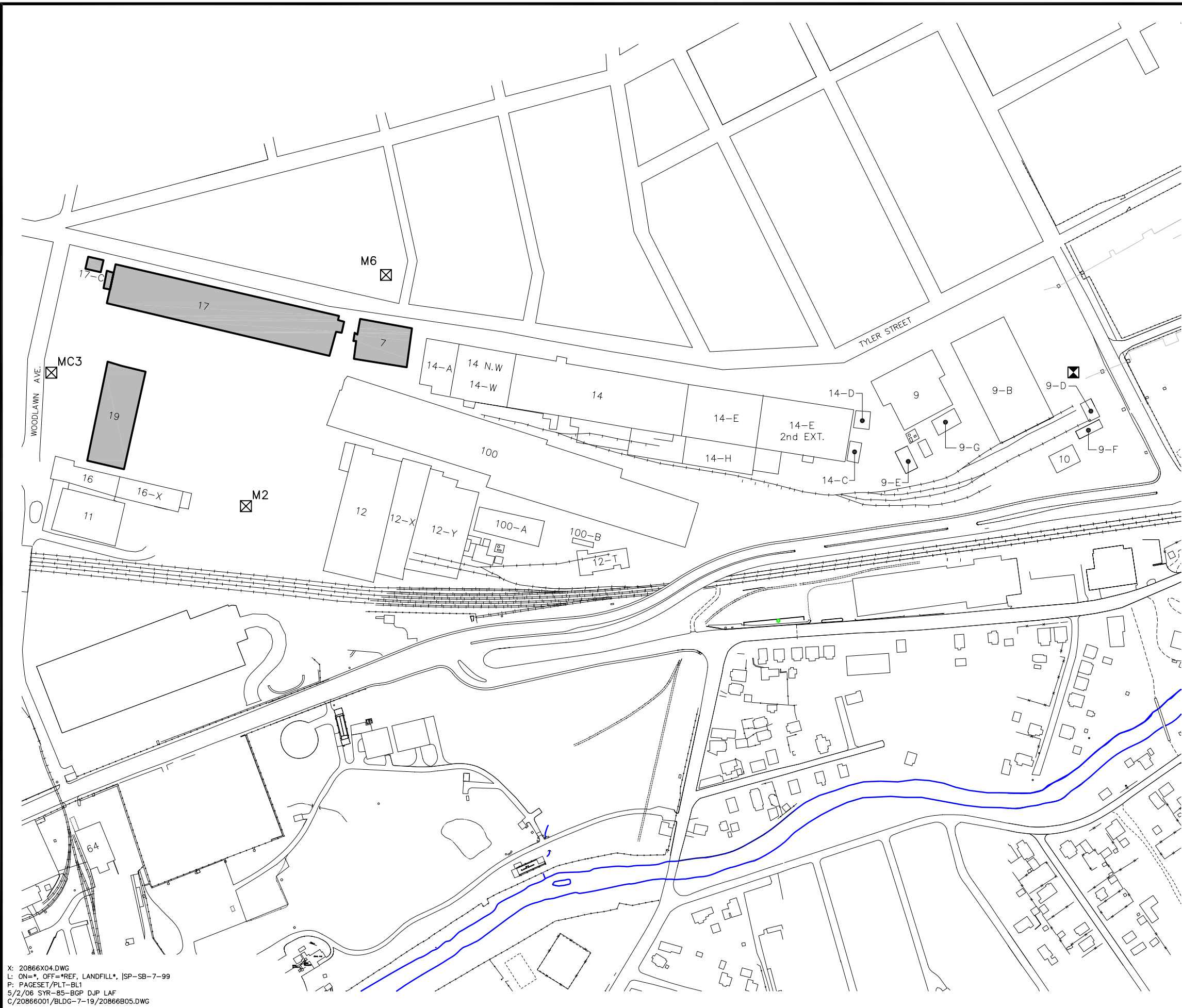
Attachment

V:\GE_Pittsfield_Other-Brownfields\Correspondence\Final\16061750.doc



cc: Dean Tagliaferro, EPA
Tim Conway, EPA
Holly Inglis, EPA
Rose Howell, EPA*
Susan Steenstrup, MDEP (2 copies)
Anna Symington, MDEP*
Jane Rothchild, MDEP*
K.C. Mitkevicius, USACE
Linda Palmieri, Weston (2 copies)
Mayor James Ruberto, City of Pittsfield
Pittsfield Department of Health

Tom Hickey, Director, PEDDA
Jeffrey Bernstein, Bernstein, Cushner & Kimmell*
Teresa Bowers, Gradient
Michael Carroll, GE*
Andrew Silber, GE*
Roderic McLaren, GE*
James Nuss, BBL
James Bieke, Goodwin Procter
Larry Kirsch, Goodwin Procter
Public Information Repositories
GE Internal Repository

**without attachment*

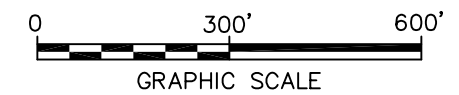


LEGEND:

 M2 APPROXIMATE AMBIENT AIR MONITORING STATION LOCATION AND ID NUMBER (SEE NOTE 4)
 APPROXIMATE BACKGROUND AMBIENT AIR MONITORING STATION LOCATION



- NOTES:**
- MAPPING IS BASED ON AERIAL PHOTOGRAPHS AND PHOTOGRAMMETRIC MAPPING BY LOCKWOOD MAPPING, INC. – FLOWN IN APRIL 1990; DATA PROVIDED BY GENERAL ELECTRIC COMPANY; AND BLASLAND, BOUCK & LEE, INC. (BBL) CONSTRUCTION PLANS; AND FROM SURVEY PROVIDED BY HILL ENGINEERS, ARCHITECTS, AND PLANNERS, DATED 6/5/01.
 - BUILDING NUMBER DESIGNATIONS ARE BASED ON A GE DRAWING TITLED, GROUND PLAN, SHEET 1, AND DATED JANUARY 1, 1994.
 - NOT ALL PHYSICAL FEATURES ARE SHOWN.
 - THE LOCATIONS OF AIR MONITORING STATIONS SHOWN ON THIS DRAWING ARE APPROXIMATE ONLY. ACTUAL LOCATIONS TO BE DETERMINED BASED ON SITE CONDITIONS AT THE TIME OF DEMOLITION.
 - THE LOCATION OF AMBIENT AIR MONITORING STATION M6 HAS BEEN RELOCATED TO THE GE-OWNED LOT LOCATED ACROSS TYLER STREET, AS REQUESTED BY EPA.
 - AMBIENT AIR MONITORING STATIONS M2 AND MC3 HAVE BEEN RELOCATED BASED ON COMMENTS FROM EPA; HOWEVER, ON-SITE CONSTRUCTION ACTIVITIES (e.g., TRUCK TRAFFIC, DEBRIS STAGING) RESTRICT THE AVAILABLE SPACE WITHIN WHICH THESE STATIONS CAN BE RELOCATED.



GENERAL ELECTRIC COMPANY
 PITTSFIELD, MASSACHUSETTS
**BUILDINGS 7, 17, 17C, AND 19
 DEMOLITION AND SITE RESTORATION PROGRAM**
**BUILDINGS 7, 17, 17C, AND 19
 LOCATIONS OF AMBIENT AIR
 MONITORING STATIONS**




FIGURE 1

X: 20866X04.DWG
 L: ON=*, OFF=*REF, LANDFILL*, [SP-SB-7-99
 P: PAGESET/PLT-BL1
 5/2/06 SYR-85-BGP DJP LAF
 C:/20866001/BLDG-7-19/20866B05.DWG