

FINAL

**SUPPLEMENTAL INVESTIGATION WORK PLAN
FOR THE LOWER HOUSATONIC RIVER**

**GENERAL ELECTRIC (GE) HOUSATONIC RIVER PROJECT
PITTSFIELD, MASSACHUSETTS**

Appendix B

Contract No. DACW33-94-D-0009

Task Order No. 0032

DCN: GEP2-020900-AAME

Prepared for

**U.S. ARMY CORPS OF ENGINEERS
NORTH ATLANTIC DIVISION
NEW ENGLAND DISTRICT**

696 Virginia Road

Concord, Massachusetts 01742-2751

Prepared by

ROY F. WESTON, INC.

1 Wall Street

Manchester, NH 03101-1501

22 February 2000

W.O. No. 10971-032-002-0149

FINAL

APPENDIX B

LAND USE MAPS

ATTACHMENT 2

Identification Of Extent Of, And Land Use And Ownership Within, Potentially Affected Area Of Housatonic River Floodplain

AUGUST 1992



GENERAL ELECTRIC

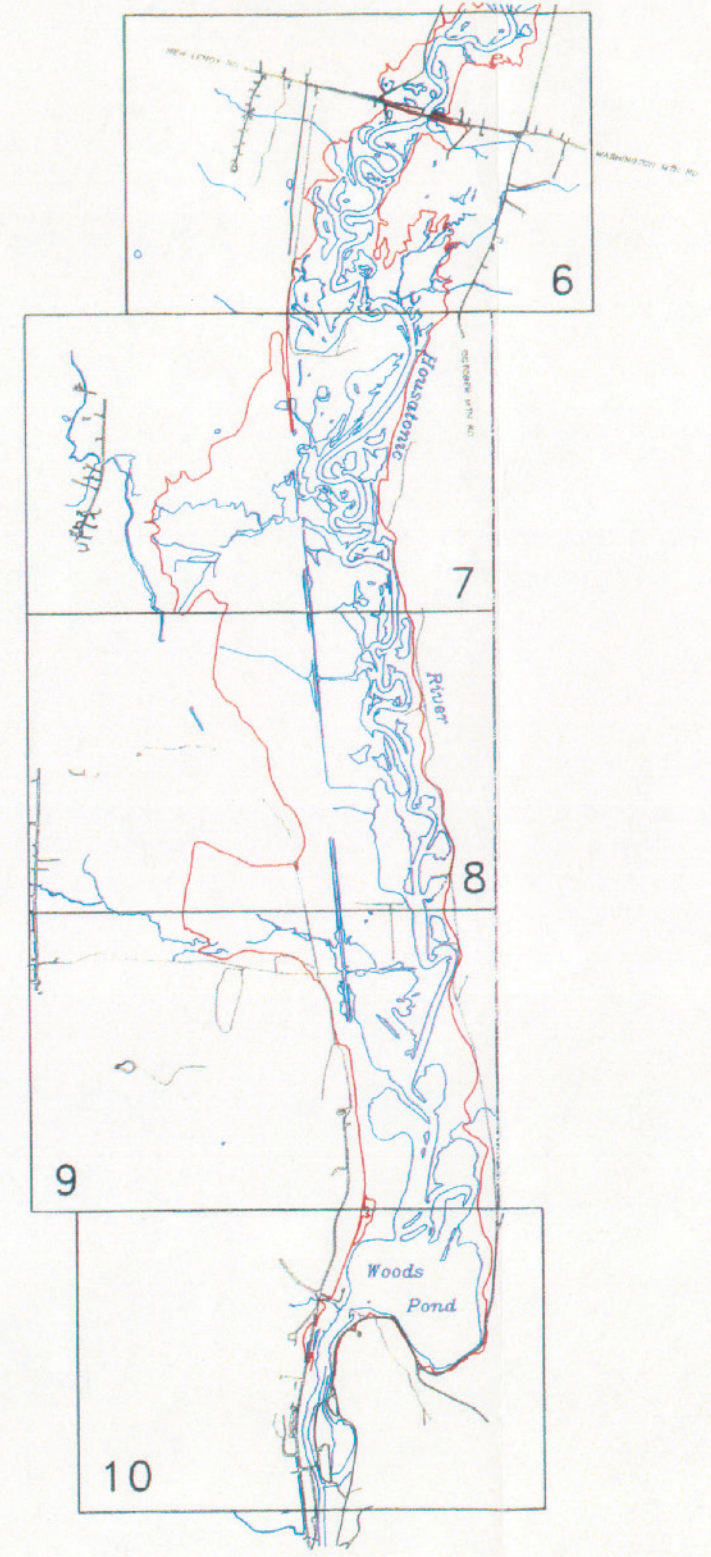
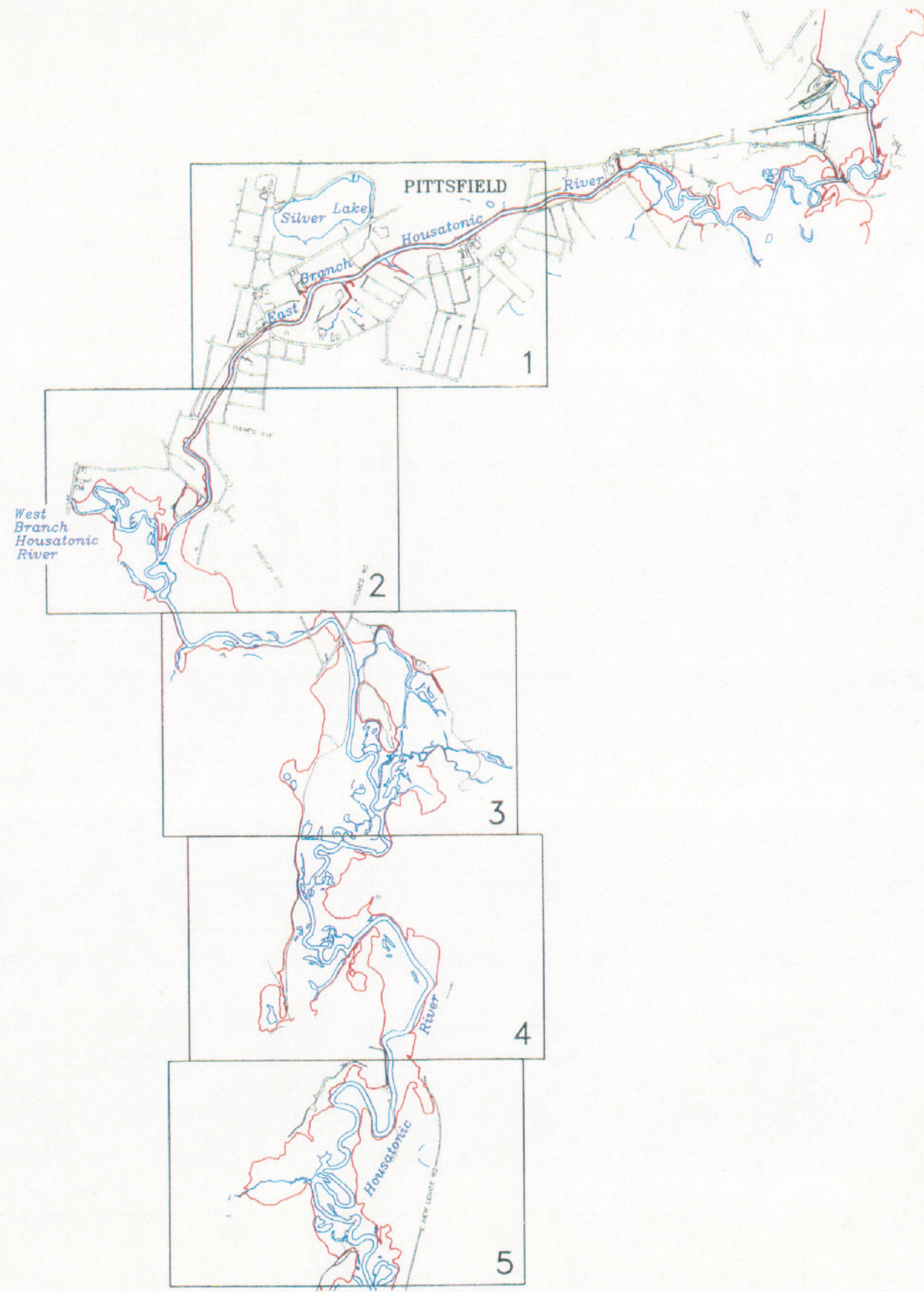
PITTSFIELD, MASSACHUSETTS



BLASLAND & BOUCK ENGINEERS, P.C.
ENGINEERS & GEOSCIENTISTS

INDEX OF DRAWINGS

- SP DRAWING INDEX/SITE PLAN
- 1. LAND USE AND PROPERTY OWNERSHIP MAP
- 2. LAND USE AND PROPERTY OWNERSHIP MAP
- 3. LAND USE AND PROPERTY OWNERSHIP MAP
- 4. LAND USE AND PROPERTY OWNERSHIP MAP
- 5. LAND USE AND PROPERTY OWNERSHIP MAP
- 6. LAND USE AND PROPERTY OWNERSHIP MAP
- 7. LAND USE AND PROPERTY OWNERSHIP MAP
- 8. LAND USE AND PROPERTY OWNERSHIP MAP
- 9. LAND USE AND PROPERTY OWNERSHIP MAP
- 10. LAND USE AND PROPERTY OWNERSHIP MAP



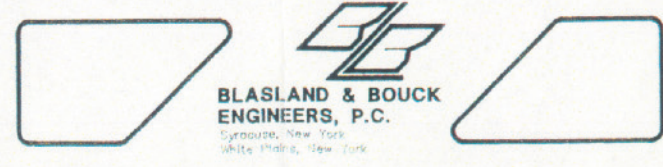
LEGEND:
 — LIMIT OF FLOODPLAIN
 — EDGE OF WATER
 — ROADWAY OR TRAIL

SCALE:
 1" = 100'

NO ALTERATIONS PERMITTED HEREON EXCEPT AS PROVIDED UNDER SECTION 7209 SUBDIVISION 2 OF THE NEW YORK STATE EDUCATION LAW

No.	Date	Revisions	Init.

In charge of _____
 Designed by _____
 Drawn by MDP
 Checked by _____

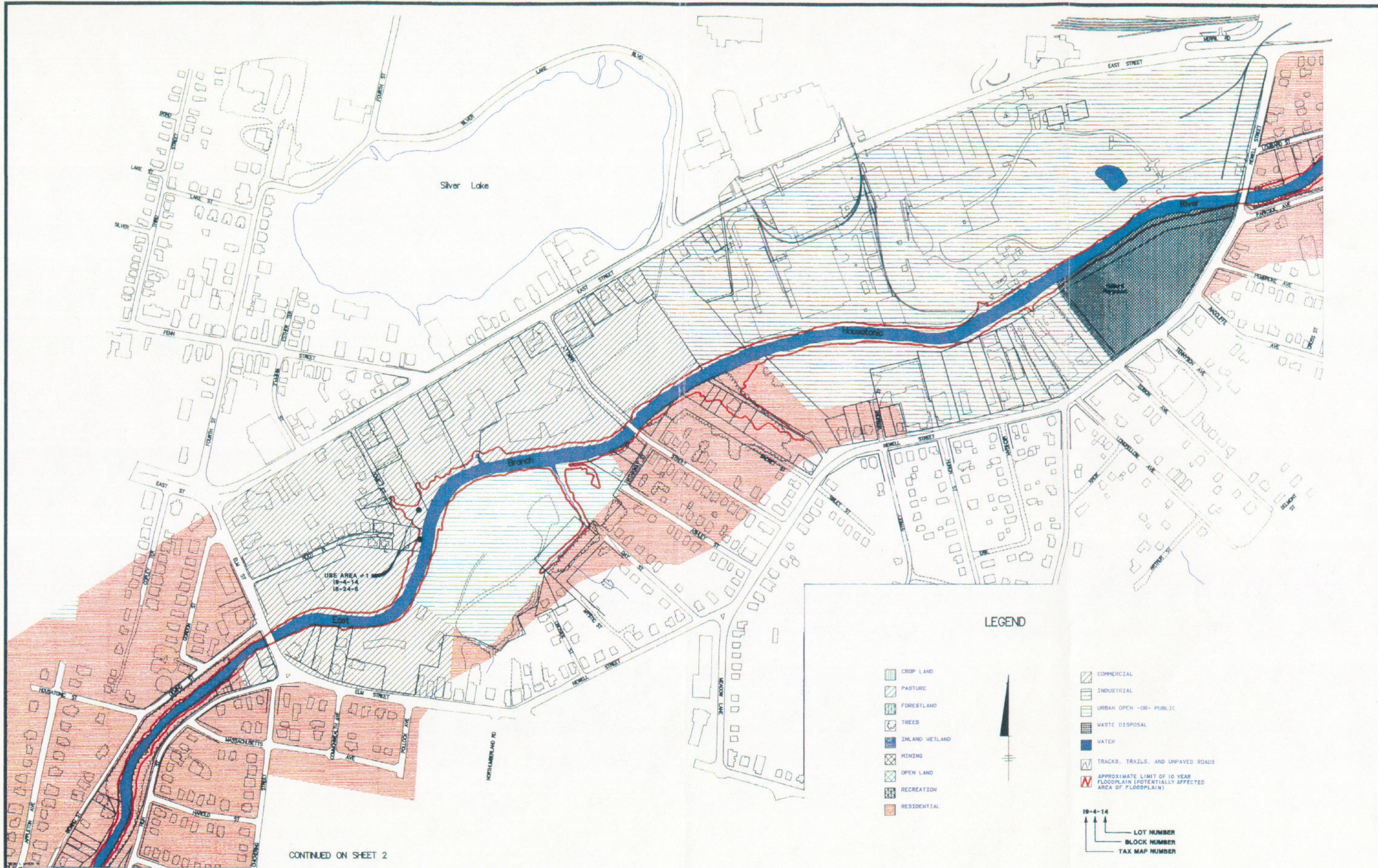


GENERAL ELECTRIC COMPANY • PITTSFIELD, MASSACHUSETTS
 HOUSATONIC RIVER EVALUATION OF NEED FOR FLOODPLAIN SHORT-TERM MEASURE

DRAWING INDEX / SITE PLAN

SP

File Number 101.97.70
 Date AUGUST 1992



CONTINUED ON SHEET 2

SCALE:

 NO ALTERATIONS PERMITTED HEREON EXCEPT AS PROVIDED UNDER SECTION 7209 SUBDIVISION 2 OF THE NEW YORK STATE EDUCATION LAW

SOURCE: The base map features presented on this figure were photogrammetrically mapped from April 1990 aerial photographs with the exception of the Building 64-G GWTF which was added from engineering drawings.
 NOTE: Land use information provided by Resource Mapping - Land Information Systems, Dept. of Forestry and Wildlife Management, Univ. of Mass. Amherst in cooperation with EPA Massachusetts Project and updated by ChemRisk.

In charge of _____
 Designed by _____
 Drawn by _____
 Checked by _____

BLASLAND & BOUCK ENGINEERS, P.C.
 Syracuse, New York
 White Plains, New York

GENERAL ELECTRIC COMPANY • PITTSFIELD, MASSACHUSETTS
 HOUSATONIC RIVER FLOODPLAIN STM REPORT
LAND USE AND PROPERTY OWNERSHIP MAP

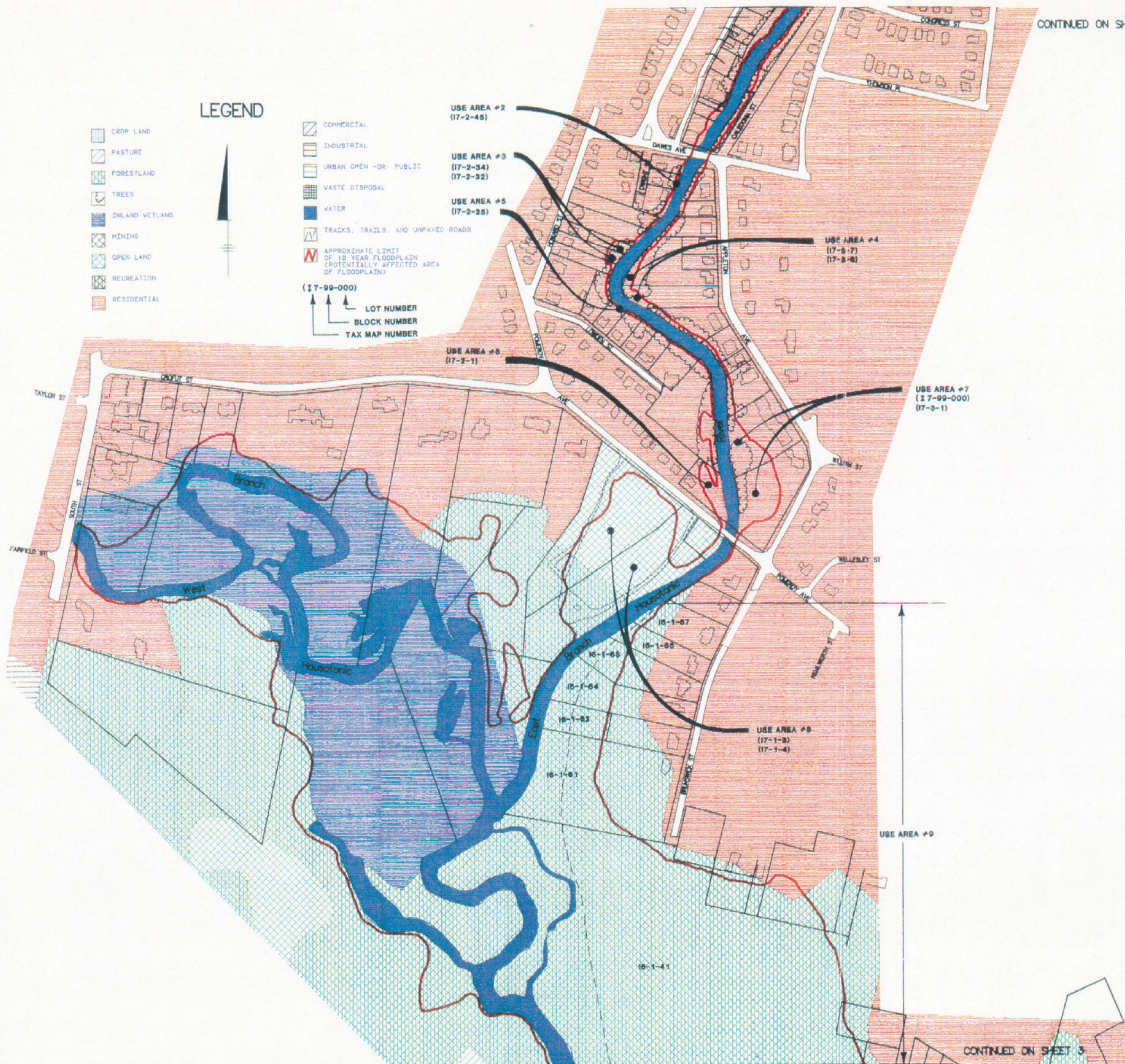
File Number 101.97.70
 Date AUGUST 1992
 1

LEGEND

- CROP LAND
- PASTURE
- FORESTLAND
- TREES
- INLAND WETLAND
- MINING
- OPEN LAND
- RECREATION
- RESIDENTIAL

- COMMERCIAL
- INDUSTRIAL
- URBAN OPEN -OR- PUBLIC
- WASTE DISPOSAL
- WATER
- TRACKS, TRAILS, AND UNPAVED ROADS
- APPROXIMATE LIMIT OF 10 YEAR FLOODPLAIN (POTENTIALLY AFFECTED AREA OF FLOODPLAIN)

(17-99-000)
 ↑ LOT NUMBER
 ↑ BLOCK NUMBER
 ↑ TAX MAP NUMBER



SOURCE: The base map features presented on this figure were photogrammetrically mapped from April 1990 aerial photographs.

NOTE: Land use information provided by Resource Mapping - Land Information Systems, Dept. of Forestry and Wildlife Management, Univ. of Mass. Amherst in cooperation with ECEA MassGIS Project and updated by ChemRisk.

In charge of _____
 Designed by _____
 Drawn by _____
 Checked by _____



BLASLAND & BOUCK
 ENGINEERS, P.C.
 Syracuse, New York
 White Plains, New York

GENERAL ELECTRIC COMPANY • PITTSFIELD, MASSACHUSETTS
 HOUSATONIC RIVER FLOODPLAIN STM REPORT
**LAND USE
 AND
 PROPERTY OWNERSHIP MAP**

2
 File Number 101.97.70
 Date AUGUST 1992