



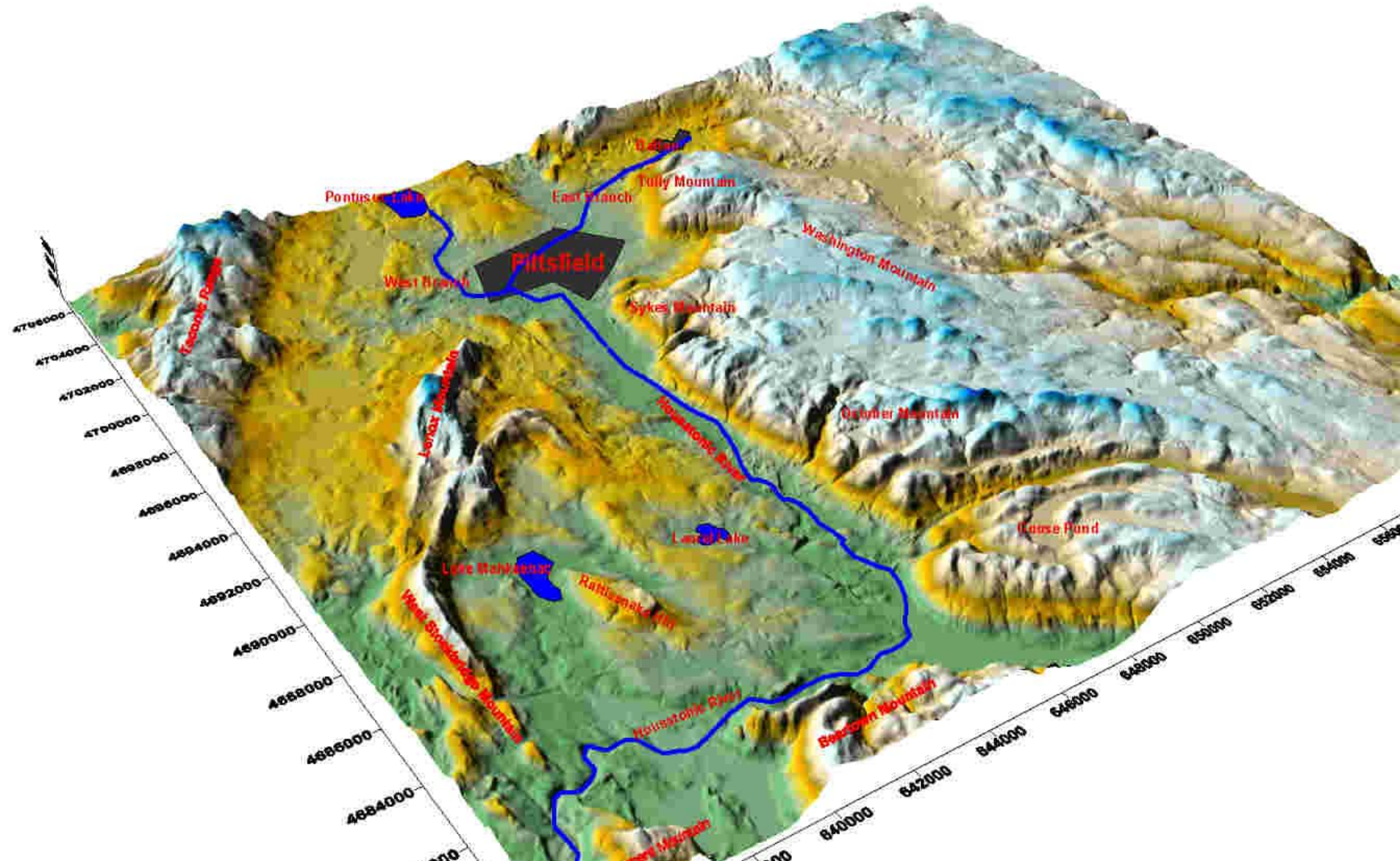
Modeling Framework Design

Richard DiNitto

Sleeman Hanley & DiNitto, Inc.



Modeling Framework Design (MFD)





Evaluation of Site Data/Information

- **Surface Water:** ~500 samples
- **Sediment:** ~10,000 samples
- **Soil:** ~12,000 samples
- **Biota:** ~2,000 samples
- **Other Site Information** (selected):
 - Meteorological data
 - Historical aerial photography
 - Surface water velocity measurements
 - Grain size analysis
 - Organic carbon analysis



Hydrology 2001



Hydrology 1990



Hydrology 1972



Hydrology 1952

Estimated PCB Mass

PCB Mass
in pounds:

300,000

In Floodplain Soil (269,000 lbs/122,000 kg)

250,000

200,000

150,000

100,000

In River Channel Sediment (204,000 lbs/93,000 kg)

50,000

0

REACHES

5

6

7

8

9

10

11

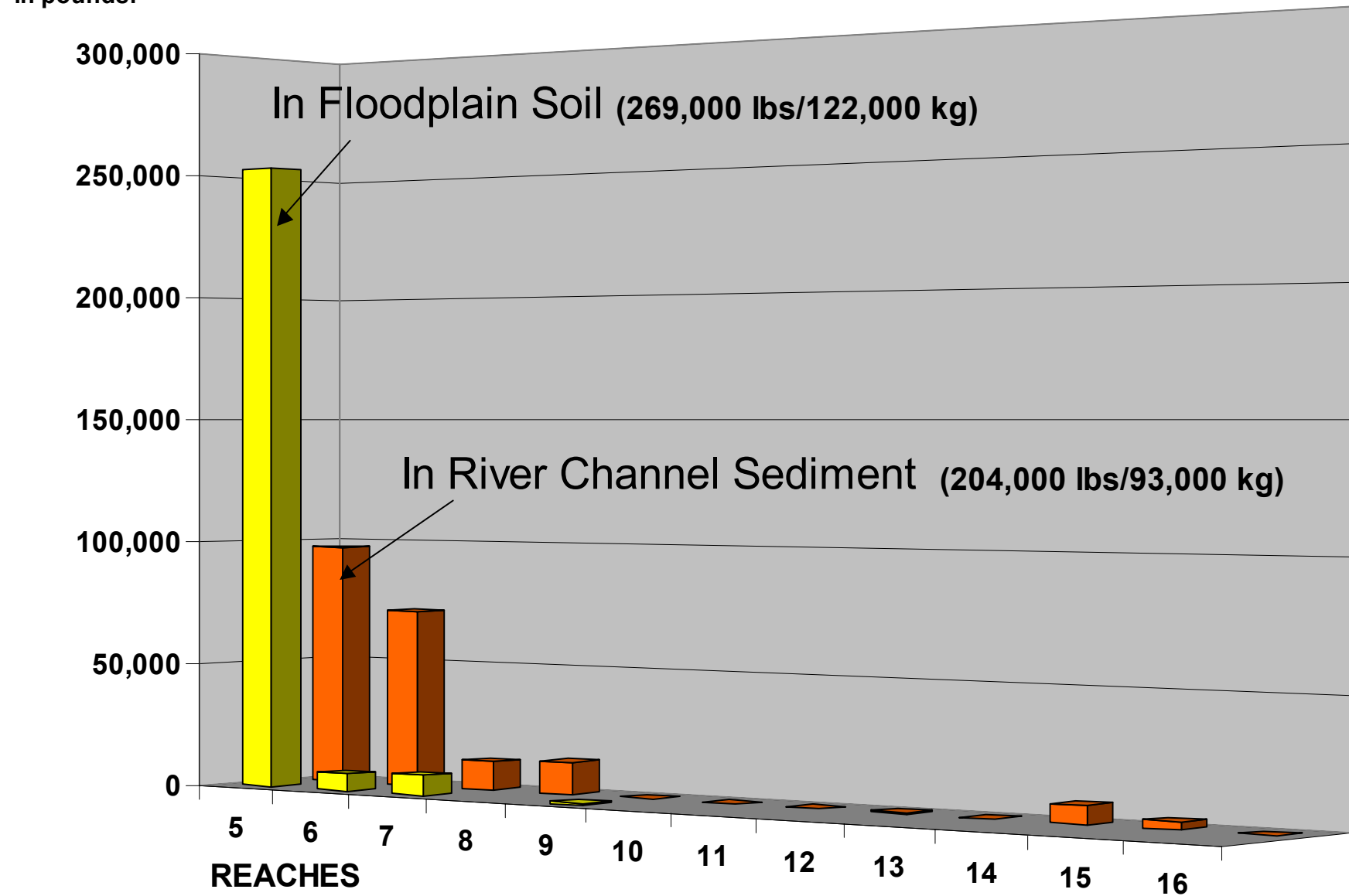
12

13

14

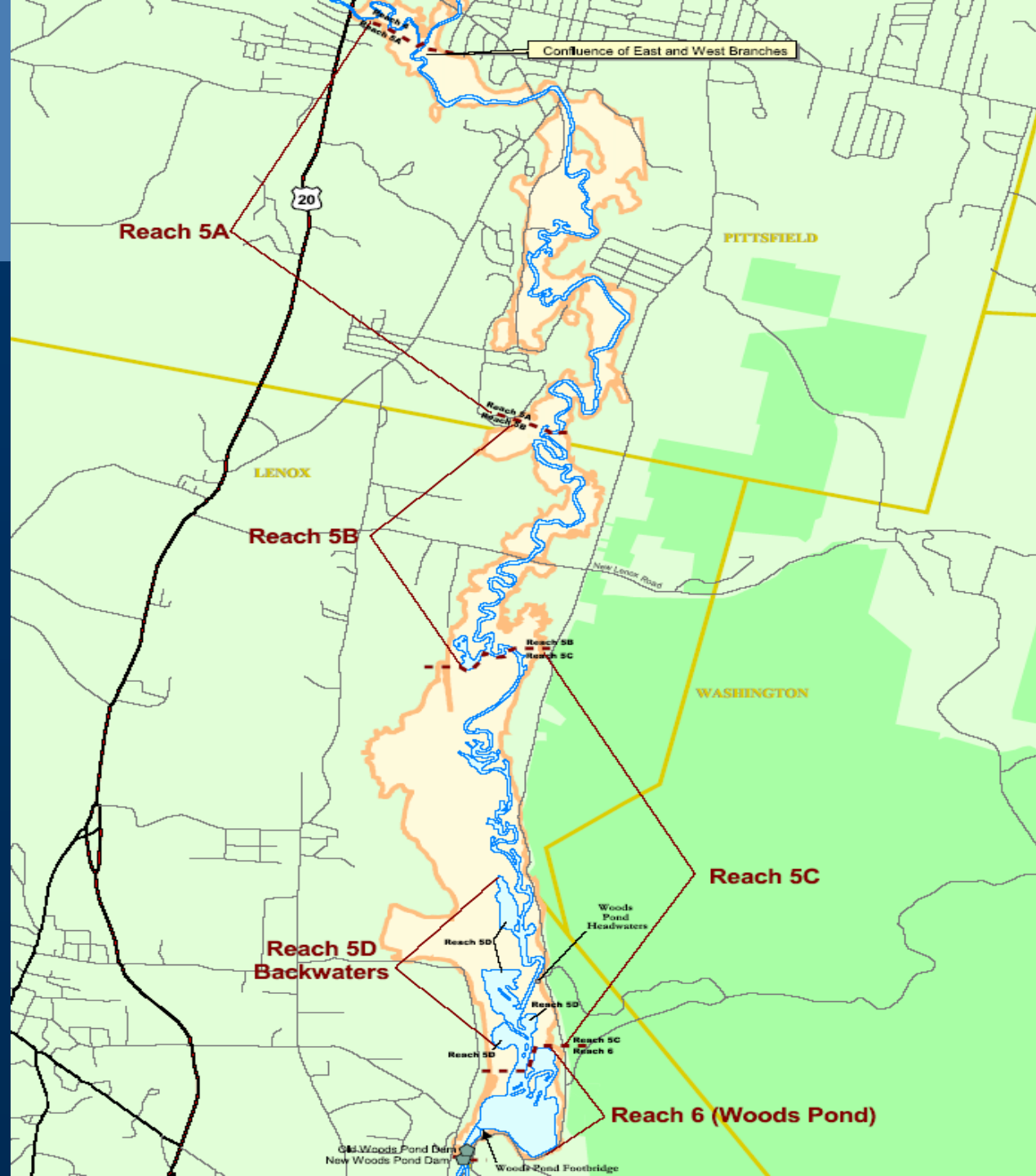
15

16





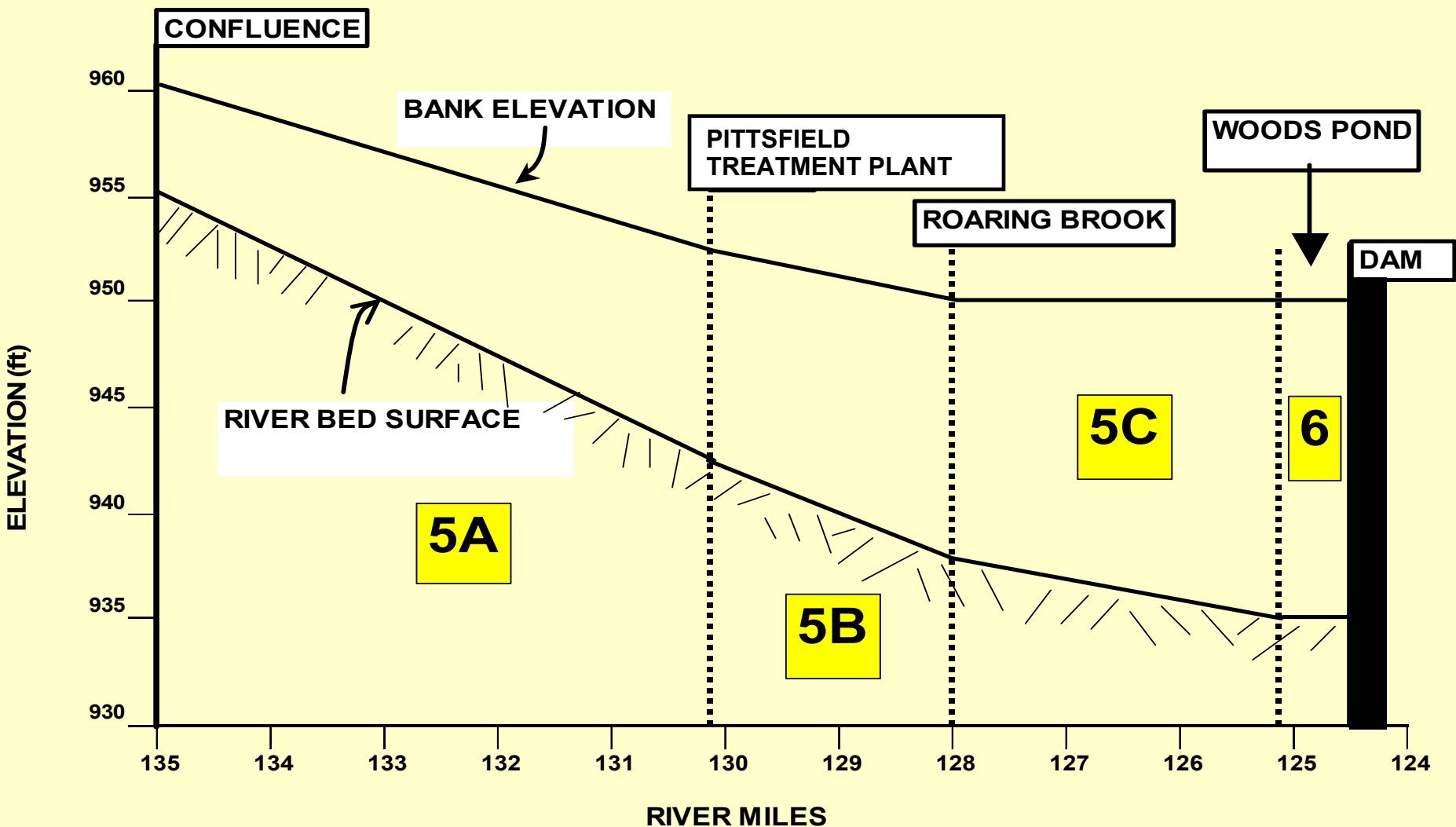
Primary Study Area (PSA)





Parallel Cross-section of PSA

Conceptual Model - Hydrodynamics

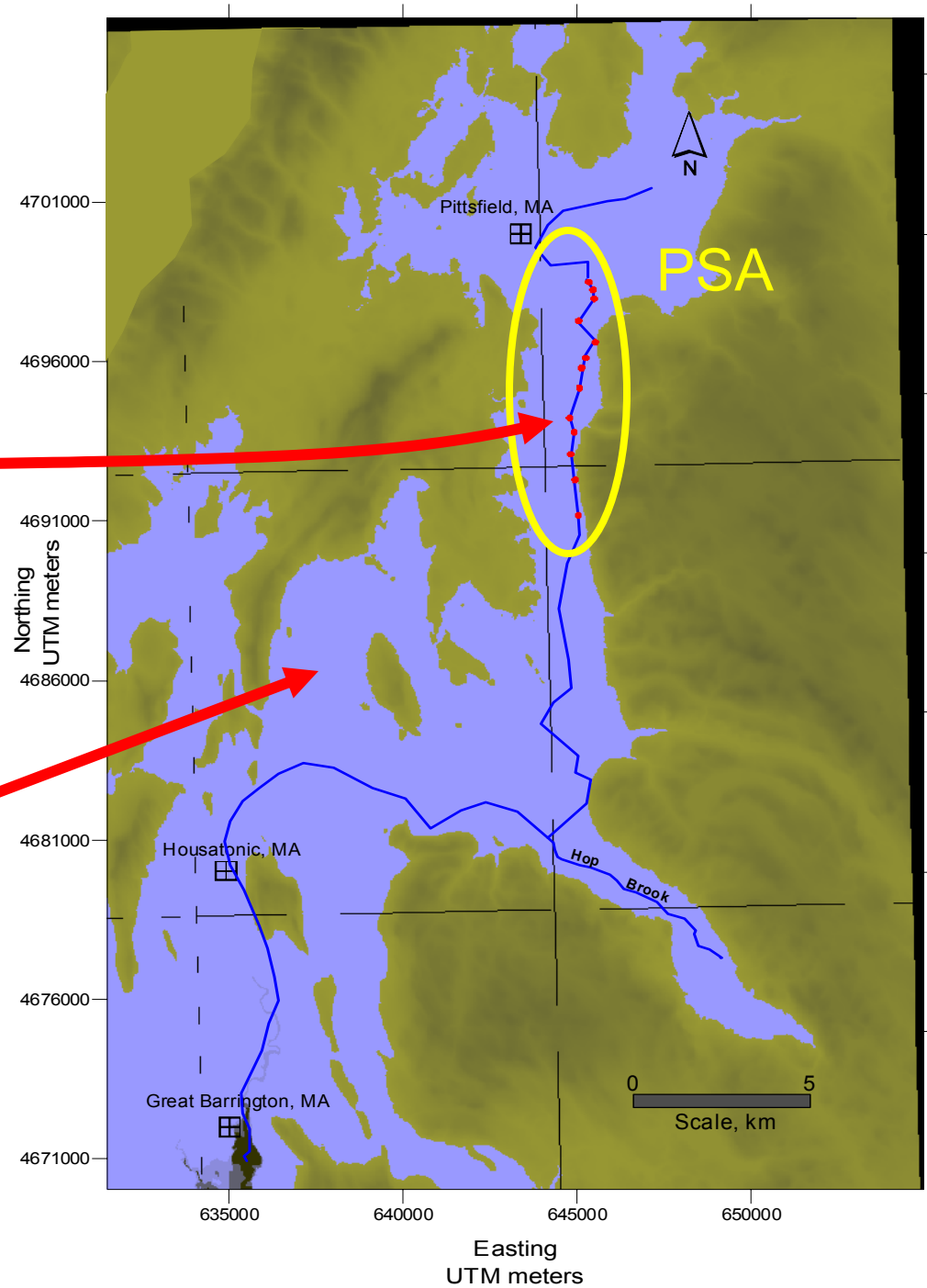




Sediment Stratigraphy

Locations of Deep Cores (red dots)

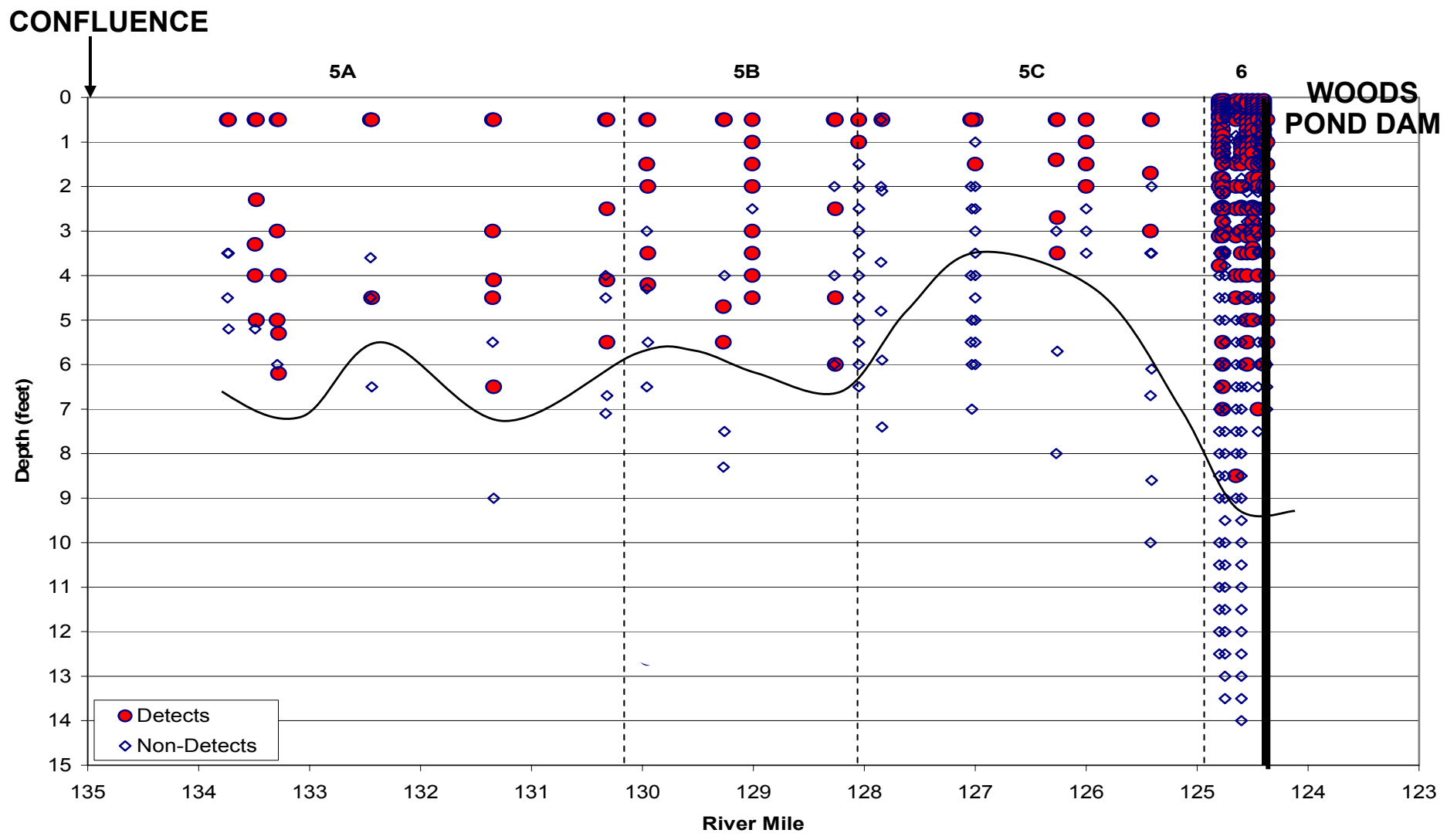
Glacial Lake Housatonic (in blue)





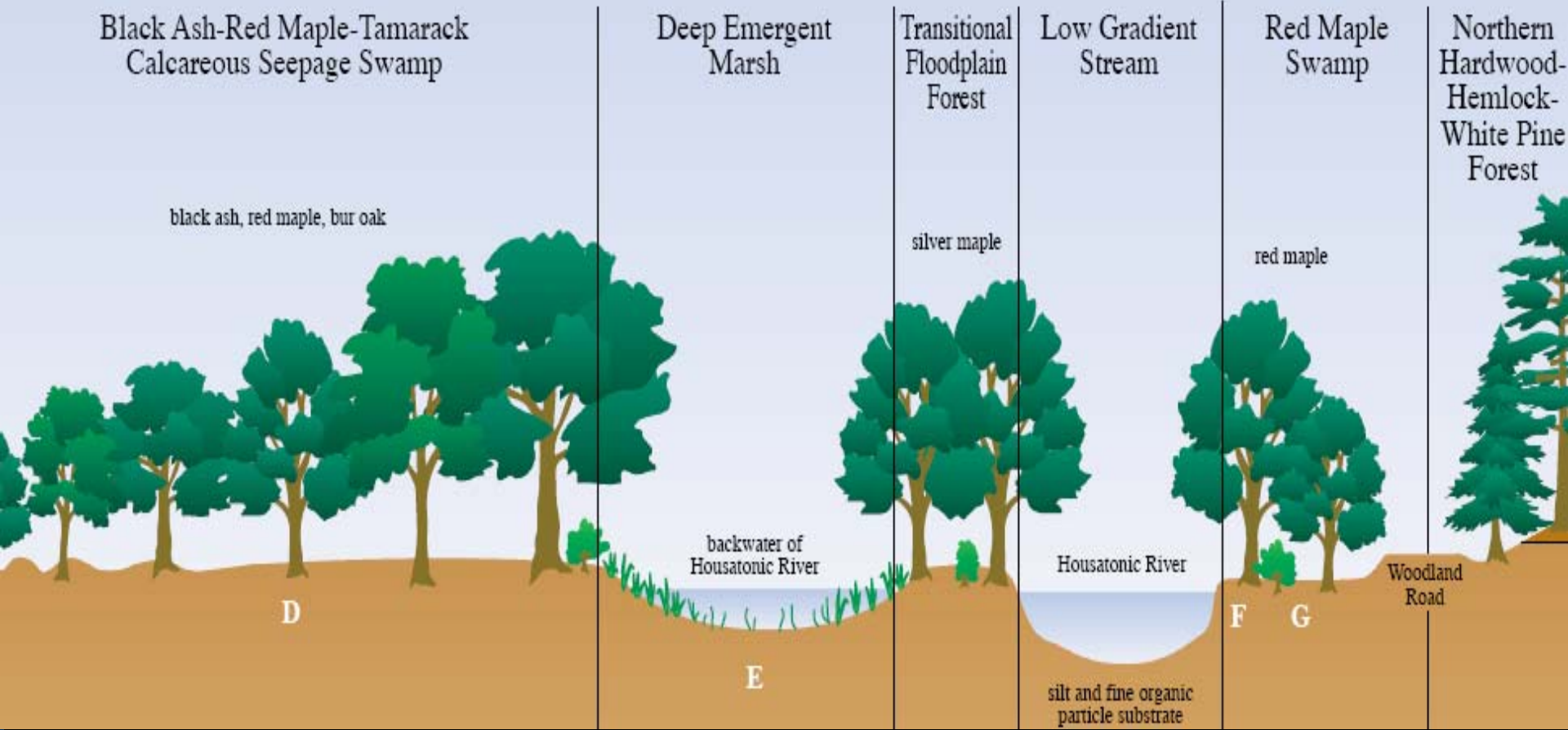
River Deep Cores

Plot of Sediment Samples by River Mile and Depth





Perpendicular Cross-Section PSA





Conceptual Model

- Processes Evaluated

	PROCESSES EVALUATED
Hydrology	Precipitation
	Evapotranspiration
	Infiltration/Soil Storage
	Surface Runoff
	Depression Storage
	GW flow & discharge
	Tributary loading
Hydrodynamics	Water velocities
	Flow resistance
	Thermal balance/heat transfer
	Wind driven circulation
Sediment Transport	Resuspension/erosion
	Bed armoring
	Bioturbation
	Anthropogenic influences
	Deposition/burial
	Flocculation (suspended load)
	Bed Load Transport
	Suspended Load Transport
	Channel evolution
	Upstream & Tributary loading
PCB Transport & Fate	Sorption/desorption (partitioning)
	Diffusion
	Advection
	Volatilization
	Dechlorination
	Upstream & Tributary loading
Bioaccumulation	Atmospheric loading
	Partitioning
	Direct uptake
	Dietary uptake
	Assimilation
	Elimination
	Biota transport



Conceptual Model Diagram

