



**U.S. Army  
Corps of Engineers**

New England District  
Concord, Massachusetts



**U.S. Environmental  
Protection Agency**

Region I  
Boston, Massachusetts

---

**FINAL DRAFT**

**PHASE 1 HUMAN HEALTH RISK ASSESSMENT FOR  
REST OF RIVER**

**Volume II – Figures**

DCN: GE-110101-AASO

1 November 2001

**Environmental Remediation Contract  
General Electric (GE)/Housatonic River Project  
Pittsfield, Massachusetts**

Contract No. DACW33-00-D-0006

Task Order No. 0003

# **PHASE 1 HUMAN HEALTH RISK ASSESSMENT FOR REST OF RIVER**

## **VOLUME II—FIGURES**

### **ENVIRONMENTAL REMEDIATION CONTRACT GENERAL ELECTRIC (GE)/HOUSATONIC RIVER PROJECT PITTSFIELD, MASSACHUSETTS**

Contract No. DACW33-00-D-0006  
Task Order No. 0003  
DCN: GE-110101-AASO

Prepared for

**U.S. ARMY CORPS OF ENGINEERS  
NEW ENGLAND DISTRICT  
CONCORD, MASSACHUSETTS**

**AND**

**U.S. ENVIRONMENTAL PROTECTION AGENCY  
REGION I  
BOSTON, MASSACHUSETTS**

Prepared by

**ROY F. WESTON, INC.**  
West Chester, Pennsylvania 19380

and

**AVATAR ENVIRONMENTAL, LLC**  
Exton, Pennsylvania 19341

1 November 2001

W.O. No. 20123.001.096.0721

---

## VOLUME II LIST OF FIGURES

---

### Title

- Figure 1-1 Phase 1 Site Screening Approach
- Figure 2-1 Phase 1 Site Screening Approach for Residential Exposure
- Figure 2-2 Phase 1 Site Screening Approach for Recreational Exposure
- Figure 2-3 Phase 1 Site Screening Approach for Agricultural Exposure
- Figure 2-4 Phase 1 Site Screening Approach for Commercial/Industrial Exposure
- Figure 3-1 Index of Floodplain Tax Parcel Maps for Reaches 5 and 6
- Figure 3-2 PCB Results for Tax Parcels H6-4-13 and H6-4-5
- Figure 3-3 PCB Results for Tax Parcels I6-1-41, I6-1-27, I6-1-42, I6-1-3, I6-1-2, and I6-1-1
- Figure 3-4 PCB Results for Tax Parcels I5-11
- Figure 3-5 PCB Results for Tax Parcels I6-3-1, I6-3-13, I6-2-6, and I6-2-1
- Figure 3-6 PCB Results for Tax Parcels J6-2-2, J6-2-11, J6-2-3, J6-2-1, J6-3-1, and J6-3-2
- Figure 3-7 PCB Results for Tax Parcels J5-2-110, J5-2-10, J5-2-9, J5-2-8, J5-2-7, and J5-2-6
- Figure 3-8 PCB Results for Tax Parcel J6-4-2
- Figure 3-9 PCB Results for Tax Parcels J5-2-5, J5-5-105, J5-2-11, and J5-2-4
- Figure 3-10 PCB Results for Tax Parcel K4-6-28
- Figure 3-11 PCB Results for Tax Parcels J4-8-5, J4-3-13, J4-8-8, J4-8-2, and J4-8-10

---

**VOLUME II  
LIST OF FIGURES  
(Continued)**

---

**Title**

- Figure 3-12 PCB Results for Tax Parcels J4-3-7, J4-3-12, J4-3-8, J4-3-9, J4-3-10, J4-3-11, J3-1-14, and J3-1-13
- Figure 3-13 PCB Results for Tax Parcel J3-2-1
- Figure 3-14 PCB Results for Tax Parcels J3-1-12, J3-1-11, J3-1-7, J3-1-10, J3-1-9, J3-1-6, and J3-1-8
- Figure 3-15 PCB Results for Tax Parcels J3-2-2, J3-2-3, J3-2-4, J3-2-5, and J3-2-6
- Figure 3-16 PCB Results for Tax Parcel J2-2-2
- Figure 3-17 PCB Results for Tax Parcels K3-1-19, K3-1-2, and K3-1-1
- Figure 3-18 PCB Results for Tax Parcels K2-1-10, K2-1-5, K2-1-4, K2-1-3, and K2-1-2
- Figure 3-19 PCB Results for Tax Parcel J2-2-1
- Figure 3-20 PCB Results for Tax Parcel K2-1-1
- Figure 3-21 PCB Results for Tax Parcel K1-1-10
- Figure 3-22 PCB Results for Tax Parcel 33-40
- Figure 3-23 PCB Results for Tax Parcel 34-1
- Figure 3-24 PCB Results for Tax Parcel 29-3
- Figure 3-25 PCB Results for Tax Parcels 29-9 and 29-5
- Figure 3-26 PCB Results for Tax Parcel 29-2
- Figure 3-27 PCB Results for Tax Parcel 29-1
- Figure 3-28 PCB Results for Tax Parcel 23-37

---

**VOLUME II  
LIST OF FIGURES  
(Continued)**

---

**Title**

- Figure 3-29 PCB Results for Tax Parcels 24-7, 24-6, 24-5, 24-4, 24-3, and 24-1
- Figure 3-30 PCB Results for Tax Parcels 19-3 and 19-2
- Figure 3-31 PCB Results for Tax Parcels 18-84 and 19-5
- Figure 3-32 PCB Results for Tax Parcel 18-85
- Figure 3-33 PCB Results for Tax Parcel 19-1
- Figure 3-34 PCB Results for Tax Parcels 18-86 and 13-1
- Figure 3-35 PCB Results for Tax Parcel 13-2
- Figure 3-36 PCB Results for Tax Parcels 14-4 and 1-4
- Figure 3-37 PCB Results for Tax Parcels 1-3, 1-1, and 2-8
- Figure 3-38 PCB Results for Tax Parcels 9-14, 9-16, 9-17, 9-18, and 2-4
- Figure 3-39 Index of Utility Easement Maps for Reaches 5 and 6
- Figure 3-40 PCB Results for Utility Easements 1, 2, 3, and 4
- Figure 3-41 PCB Results for Utility Easements 5, 6, and 7
- Figure 3-42 PCB Results for Utility Easements 8, 9, and 10
- Figure 3-43 PCB Results for Utility Easements 11 and 12
- Figure 3-44 PCB Results for Utility Easement 13
- Figure 3-45 Index of Riverbank and Sediment Exposure Area Maps for Reaches 5 and 6

---

**VOLUME II  
LIST OF FIGURES  
(Continued)**

---

**Title**

- Figure 3-46 PCB Results for Exposure Area 1
- Figure 3-47 PCB Results for Exposure Area 2
- Figure 3-48 PCB Results for Exposure Area 3
- Figure 3-49 PCB Results for Exposure Area 4
- Figure 3-50 PCB Results for Exposure Area 5
- Figure 3-51 PCB Results for Exposure Area 6
- Figure 3-52 PCB Results for Exposure Area 7
- Figure 3-53 PCB Results for Exposure Area 8
- Figure 3-54 PCB Results for Exposure Area 9
- Figure 3-55 PCB Results for Exposure Area 10
- Figure 3-56 PCB Results for Exposure Area 11
- Figure 3-57 PCB Results for Exposure Area 12
- Figure 3-58 PCB Results for Exposure Area 13
- Figure 3-59 PCB Results for Exposure Area 14
- Figure 3-60 PCB Results for Exposure Area 15
- Figure 3-61 PCB Results for Exposure Area 16
- Figure 3-62 PCB Results for Exposure Area 17

---

**VOLUME II  
LIST OF FIGURES  
(Continued)**

---

**Title**

- Figure 3-63    PCB Results for Exposure Area 18
- Figure 3-64    PCB Results for Exposure Area 19
- Figure 3-65    PCB Results for Exposure Area 20
- Figure 3-66    PCB Results for Exposure Area 21
- Figure 3-67    PCB Results for Exposure Area 22
- Figure 3-68    PCB Results for Exposure Area 23
- Figure 4-1     Index of High-Contact Residential Floodplain Maps for Reaches 7 and 8
- Figure 4-2     PCB Results in Floodplain High-Contact Residential Areas
- Figure 4-3     PCB Results in Floodplain High-Contact Residential Areas
- Figure 4-4     PCB Results in Floodplain High-Contact Residential Areas
- Figure 4-5     PCB Results in Floodplain High-Contact Residential Areas
- Figure 4-6     PCB Results in Floodplain High-Contact Residential Areas
- Figure 4-7     PCB Results in Floodplain High-Contact Residential Areas
- Figure 4-8     PCB Results in Floodplain High-Contact Residential Areas
- Figure 4-9     PCB Results in Floodplain High-Contact Residential Areas
- Figure 4-10    PCB Results in Floodplain High-Contact Residential Areas
- Figure 4-11    PCB Results in Floodplain High-Contact Residential Areas

---

**VOLUME II  
LIST OF FIGURES  
(Continued)**

---

**Title**

- Figure 4-12 PCB Results in Floodplain High-Contact Residential Areas
- Figure 4-13 PCB Results in Floodplain High-Contact Residential Areas
- Figure 4-14 PCB Results in Floodplain High-Contact Residential Areas
- Figure 4-15 PCB Results in Floodplain High-Contact Residential Areas
- Figure 4-16 Index of Floodplain Maps (Non-HCRA) for Reaches 7 and 8
- Figure 4-17 PCB Results of Floodplain Soils in Exposure Areas
- Figure 4-18 PCB Results of Floodplain Soils in Exposure Areas
- Figure 4-19 PCB Results of Floodplain Soils in Exposure Areas
- Figure 4-20 PCB Results of Floodplain Soils in Exposure Areas
- Figure 4-21 PCB Results of Floodplain Soils in Exposure Areas
- Figure 4-22 PCB Results of Floodplain Soils in Exposure Areas
- Figure 4-23 PCB Results of Floodplain Soils in Exposure Areas
- Figure 4-24 PCB Results of Floodplain Soils in Exposure Areas
- Figure 4-25 PCB Results of Floodplain Soils in Exposure Areas
- Figure 4-26 PCB Results of Floodplain Soils in Exposure Areas
- Figure 4-27 PCB Results of Floodplain Soils in Exposure Areas
- Figure 4-28 PCB Results of Floodplain Soils in Exposure Areas



---

**VOLUME II  
LIST OF FIGURES  
(Continued)**

---

**Title**

- Figure 4-29 PCB Results of Floodplain Soils in Exposure Areas
- Figure 4-30 PCB Results of Floodplain Soils in Exposure Areas
- Figure 4-31 PCB Results of Floodplain Soils in Exposure Areas
- Figure 4-32 PCB Results of Floodplain Soils in Exposure Areas
- Figure 4-33 PCB Results of Floodplain Soils in Exposure Areas
- Figure 4-34 PCB Results of Floodplain Soils in Exposure Areas
- Figure 4-35 PCB Results of Floodplain Soils in Exposure Areas
- Figure 4-36 Index of Sediment Maps For Reaches 7 and 8
- Figure 4-37 PCB Results for the Area Between the Woods Pond Dam and Golden Hill Road
- Figure 4-38 PCB Results for the Columbia Mill Dam Impoundment Area
- Figure 4-39 PCB Results for the Eagle Mill Dam Impoundment Area
- Figure 4-40 PCB Results for the Area Between Route 20 and Meadow Street
- Figure 4-41 PCB Results for the Willow Mill Dam Impoundment Area
- Figure 4-42 PCB Results for the Area Between the Willow Mill Dam Impoundment Area and Glendale Middle Road
- Figure 4-43 PCB Results for the Glendale Dam Impoundment Area
- Figure 4-44 PCB Results for the Area Between the Glendale Impoundment Area and the Route 183 Bridge
- Figure 4-45 PCB Results for the Rising Pond Impoundment Area

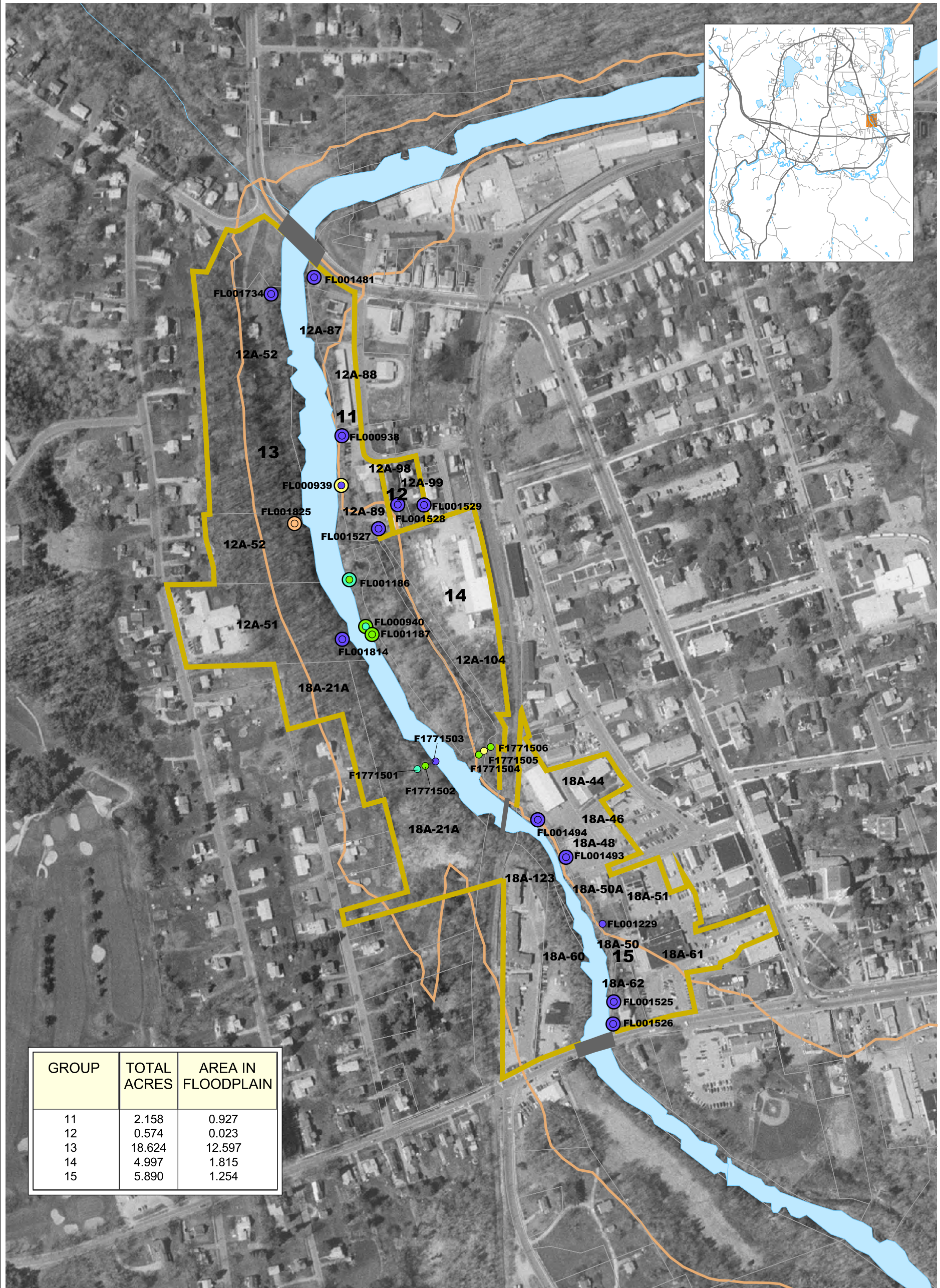
---

**VOLUME II  
LIST OF FIGURES  
(Continued)**

---

**Title**

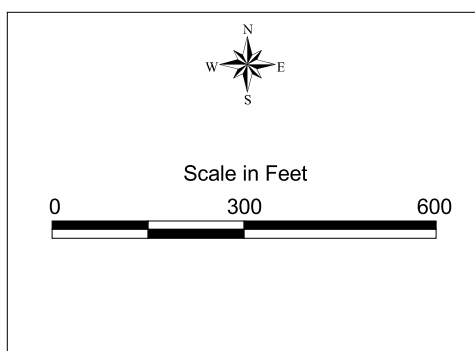
- Figure 5-1     Index of Figures for Section 5
- Figure 5-2     PCB Results for Reach 9 Agricultural Area
- Figure 5-3     PCB Results for Bartholomew's Cobble Recreation Area



GROUP	TOTAL ACRES	AREA IN FLOODPLAIN
11	2.158	0.927
12	0.574	0.023
13	18.624	12.597
14	4.997	1.815
15	5.890	1.254

**LEGEND:**

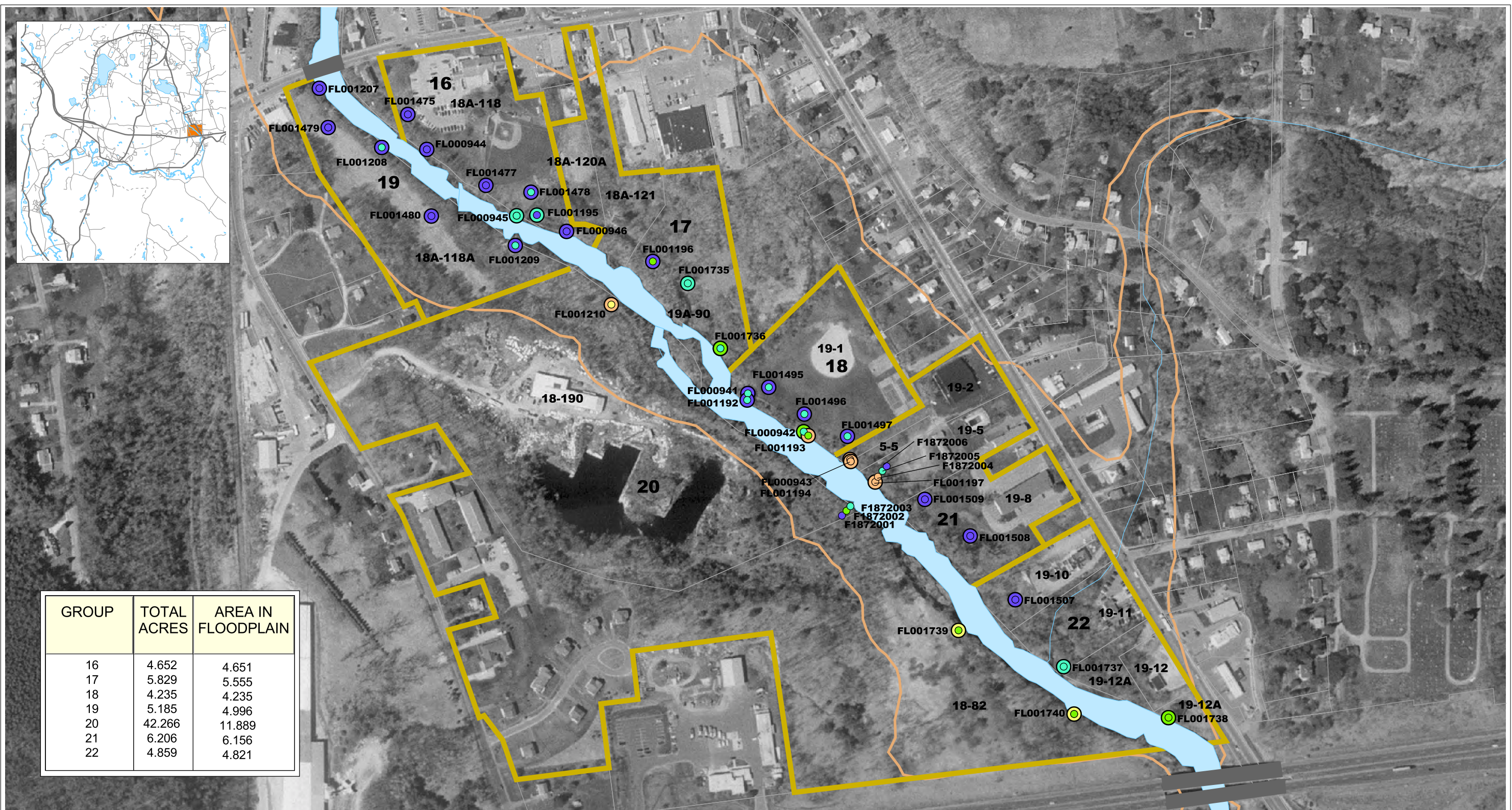
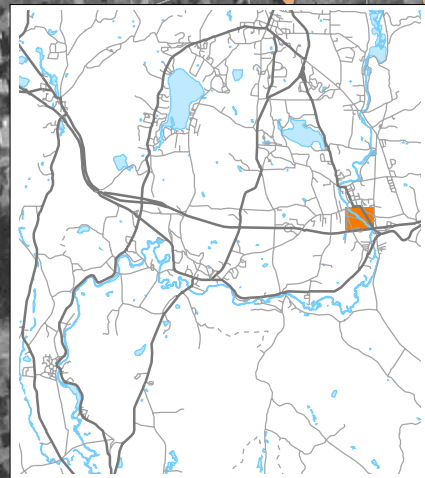
- Floodplain Sample, Surface (0 - 0.5 feet)
  - Floodplain Sample, Sub-surface (0.5 - 1 feet)
- PCB Results Key (ppm)
- < 1
  - 1 - 2
  - 2 - 4
  - 4 - 7
  - 7 - 25
  - 25 - 100
  - > 100
- Exposure Area Boundary
  - Parcel Boundaries
  - Housatonic River
  - 100-year Floodplain



Phase 1 - Human Health Risk Assessment  
 GE Housatonic River Project  
 Pittsfield, Massachusetts

**FIGURE 4 - 21  
 PCB RESULTS OF  
 FLOODPLAIN SOILS IN  
 EXPOSURE AREAS**

NOTE: Datamart as of September 12, 2001



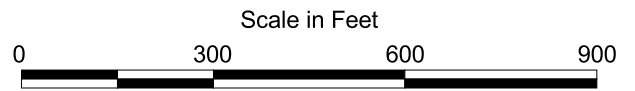
GROUP	TOTAL ACRES	AREA IN FLOODPLAIN
16	4.652	4.651
17	5.829	5.555
18	4.235	4.235
19	5.185	4.996
20	42.266	11.889
21	6.206	6.156
22	4.859	4.821

**LEGEND:**

- Floodplain Sample, Surface (0 - 0.5 feet)
- Floodplain Sample, Sub-surface (0.5 - 1 feet)

- PCB Results Key (ppm)
- < 1
  - 1 - 2
  - 2 - 4
  - 4 - 7
  - 7 - 25
  - 25 - 100
  - > 100

- ▭ Exposure Area Boundary
- ▭ Parcel Boundaries
- ▭ Housatonic River
- ▭ 100-year Floodplain



Phase 1 - Human Health Risk Assessment  
 GE Housatonic River Project  
 Pittsfield, Massachusetts

**FIGURE 4 - 22  
 PCB RESULTS OF  
 FLOODPLAIN SOILS IN  
 EXPOSURE AREAS**

NOTE: Datamart as of Sept 12, 2001



GROUP	TOTAL ACRES	AREA IN FLOODPLAIN
23	31.278	16.543
24	12.730	9.129

**LEGEND:**

- Floodplain Sample, Surface (0 - 0.5 feet)
- Floodplain Sample, Sub-surface (0.5 - 1 feet)

- PCB Results Key (ppm)**
- < 1
  - 1 - 2
  - 2 - 4
  - 4 - 7
  - 7 - 25
  - 25 - 100
  - > 100

- ▭ Exposure Area Boundary
- ▭ Parcel Boundaries
- ▭ Housatonic River
- ▭ 100-year Floodplain



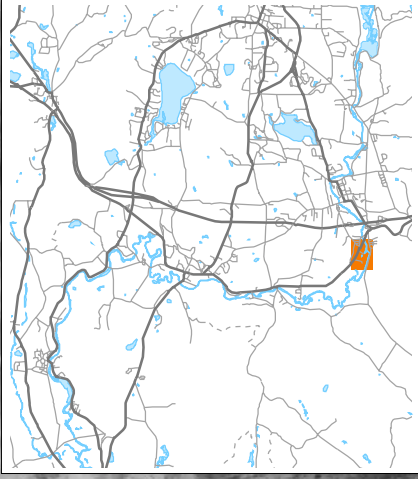
Scale in Feet



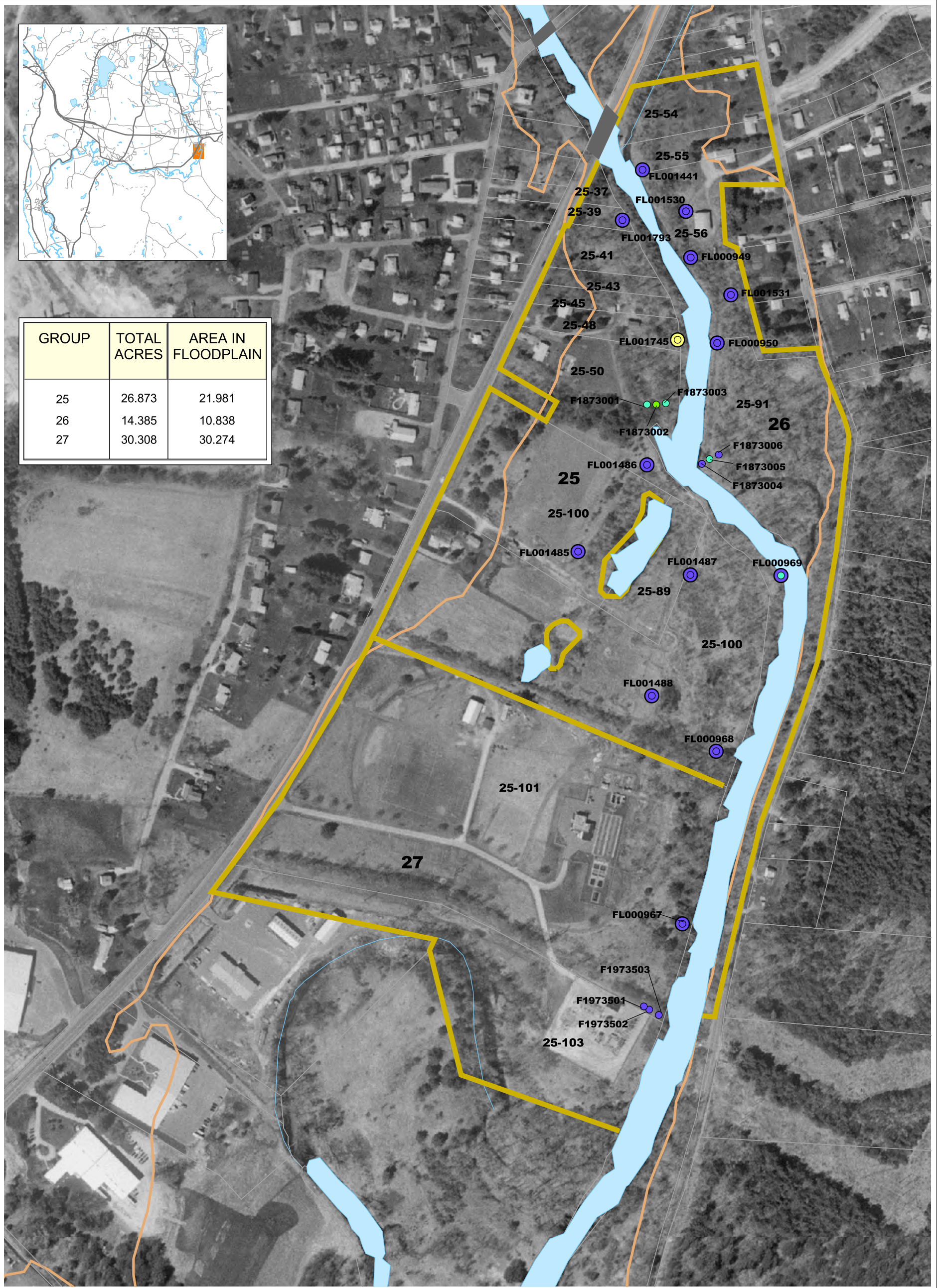
Phase 1 - Human Health Risk Assessment  
 GE Housatonic River Project  
 Pittsfield, Massachusetts

**FIGURE 4 - 23  
 PCB RESULTS OF  
 FLOODPLAIN SOILS IN  
 EXPOSURE AREAS**

NOTE: Datamart as of Sept 12, 2001

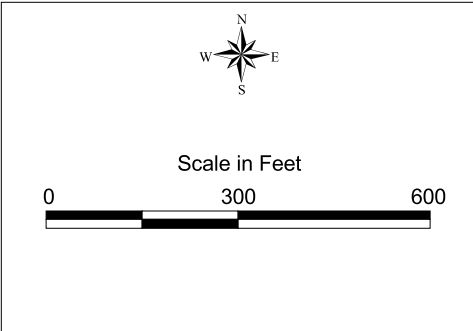


GROUP	TOTAL ACRES	AREA IN FLOODPLAIN
25	26.873	21.981
26	14.385	10.838
27	30.308	30.274



**LEGEND:**

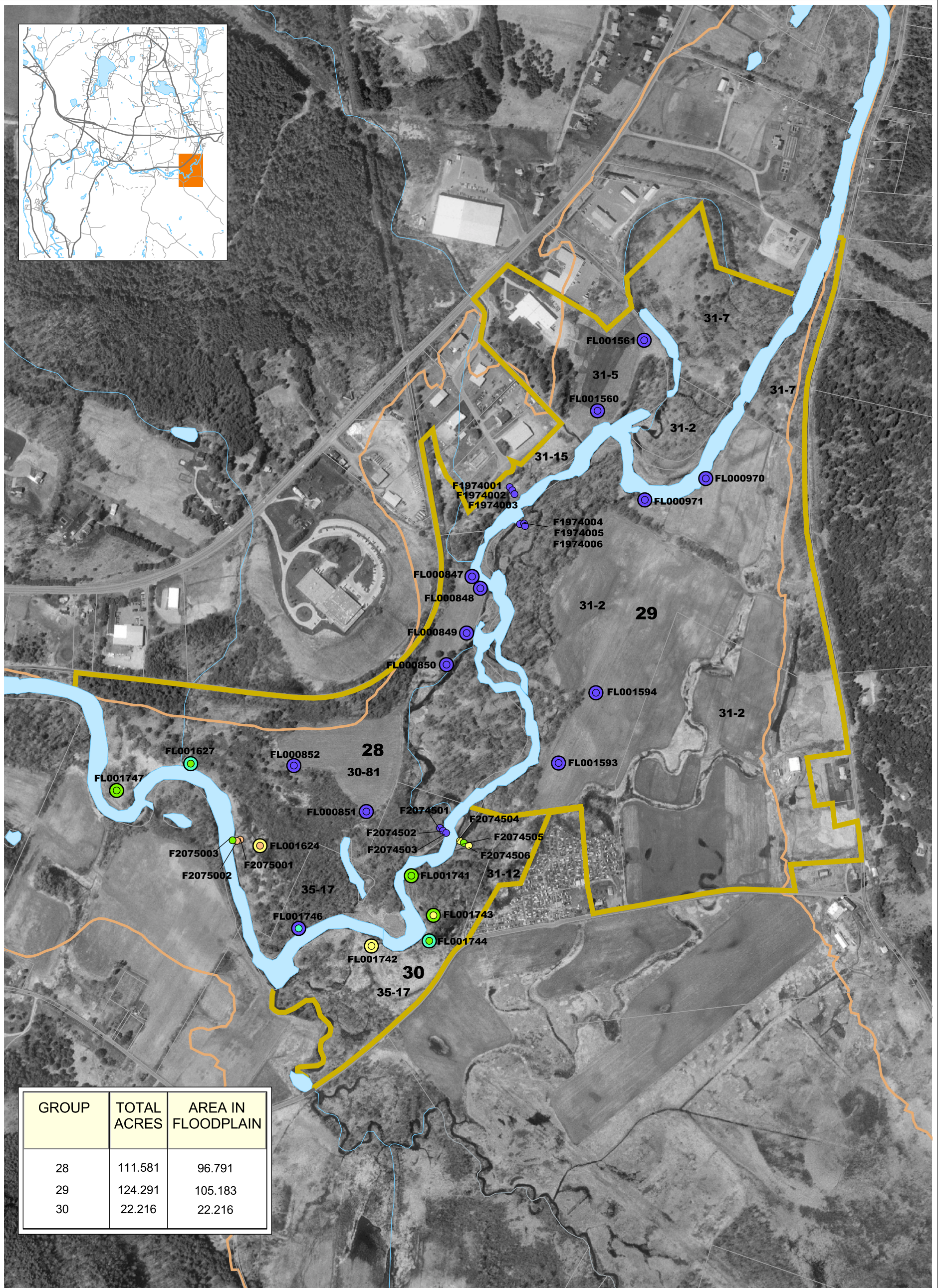
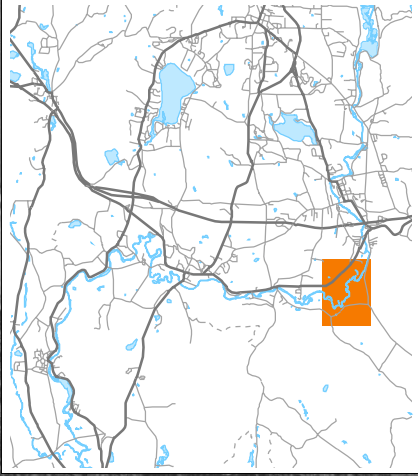
- Floodplain Sample, Surface (0 - 0.5 feet)
- Floodplain Sample, Sub-surface (0.5 - 1 feet)
- < 1
- 1 - 2
- 2 - 4
- 4 - 7
- 7 - 25
- 25 - 100
- > 100
- Exposure Area Boundary
- Parcel Boundaries
- Housatonic River
- 100-year Floodplain



Phase 1 - Human Health Risk Assessment  
 GE Housatonic River Project  
 Pittsfield, Massachusetts

**FIGURE 4 - 24  
 PCB RESULTS OF  
 FLOODPLAIN SOILS IN  
 EXPOSURE AREAS**

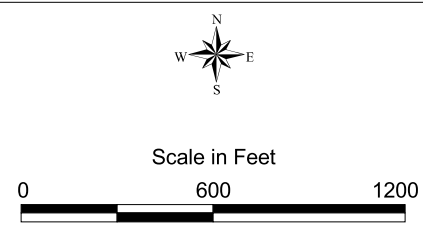
NOTE: Datamart as of September 12, 2001



GROUP	TOTAL ACRES	AREA IN FLOODPLAIN
28	111.581	96.791
29	124.291	105.183
30	22.216	22.216

**LEGEND:**

- Floodplain Sample, Surface (0 - 0.5 feet)
  - Floodplain Sample, Sub-surface (0.5 - 1 feet)
- PCB Results Key (ppm)**
- < 1
  - 1 - 2
  - 2 - 4
  - 4 - 7
  - 7 - 25
  - 25 - 100
  - > 100
- Exposure Area Boundary
  - Parcel Boundaries
  - Housatonic River
  - 100-year Floodplain



Phase 1 - Human Health Risk Assessment  
 GE Housatonic River Project  
 Pittsfield, Massachusetts

**FIGURE 4 - 25  
 PCB RESULTS OF  
 FLOODPLAIN SOILS IN  
 EXPOSURE AREAS**

NOTE: Datamart as of September 12, 2001