



**U.S. Army
Corps of Engineers**

New England District
Concord, Massachusetts



**U.S. Environmental
Protection Agency**

Region I
Boston, Massachusetts

FINAL DRAFT

**PHASE 1 HUMAN HEALTH RISK ASSESSMENT FOR
REST OF RIVER**

Volume II – Figures

DCN: GE-110101-AASO

1 November 2001

**Environmental Remediation Contract
General Electric (GE)/Housatonic River Project
Pittsfield, Massachusetts**

Contract No. DACW33-00-D-0006

Task Order No. 0003

PHASE 1 HUMAN HEALTH RISK ASSESSMENT FOR REST OF RIVER

VOLUME II—FIGURES

ENVIRONMENTAL REMEDIATION CONTRACT GENERAL ELECTRIC (GE)/HOUSATONIC RIVER PROJECT PITTSFIELD, MASSACHUSETTS

Contract No. DACW33-00-D-0006
Task Order No. 0003
DCN: GE-110101-AASO

Prepared for

**U.S. ARMY CORPS OF ENGINEERS
NEW ENGLAND DISTRICT
CONCORD, MASSACHUSETTS**

AND

**U.S. ENVIRONMENTAL PROTECTION AGENCY
REGION I
BOSTON, MASSACHUSETTS**

Prepared by

ROY F. WESTON, INC.
West Chester, Pennsylvania 19380

and

AVATAR ENVIRONMENTAL, LLC
Exton, Pennsylvania 19341

1 November 2001

W.O. No. 20123.001.096.0721

VOLUME II LIST OF FIGURES

Title

- Figure 1-1 Phase 1 Site Screening Approach
- Figure 2-1 Phase 1 Site Screening Approach for Residential Exposure
- Figure 2-2 Phase 1 Site Screening Approach for Recreational Exposure
- Figure 2-3 Phase 1 Site Screening Approach for Agricultural Exposure
- Figure 2-4 Phase 1 Site Screening Approach for Commercial/Industrial Exposure
- Figure 3-1 Index of Floodplain Tax Parcel Maps for Reaches 5 and 6
- Figure 3-2 PCB Results for Tax Parcels H6-4-13 and H6-4-5
- Figure 3-3 PCB Results for Tax Parcels I6-1-41, I6-1-27, I6-1-42, I6-1-3, I6-1-2, and I6-1-1
- Figure 3-4 PCB Results for Tax Parcels I5-11
- Figure 3-5 PCB Results for Tax Parcels I6-3-1, I6-3-13, I6-2-6, and I6-2-1
- Figure 3-6 PCB Results for Tax Parcels J6-2-2, J6-2-11, J6-2-3, J6-2-1, J6-3-1, and J6-3-2
- Figure 3-7 PCB Results for Tax Parcels J5-2-110, J5-2-10, J5-2-9, J5-2-8, J5-2-7, and J5-2-6
- Figure 3-8 PCB Results for Tax Parcel J6-4-2
- Figure 3-9 PCB Results for Tax Parcels J5-2-5, J5-5-105, J5-2-11, and J5-2-4
- Figure 3-10 PCB Results for Tax Parcel K4-6-28
- Figure 3-11 PCB Results for Tax Parcels J4-8-5, J4-3-13, J4-8-8, J4-8-2, and J4-8-10

**VOLUME II
LIST OF FIGURES
(Continued)**

Title

- Figure 3-12 PCB Results for Tax Parcels J4-3-7, J4-3-12, J4-3-8, J4-3-9, J4-3-10, J4-3-11, J3-1-14, and J3-1-13
- Figure 3-13 PCB Results for Tax Parcel J3-2-1
- Figure 3-14 PCB Results for Tax Parcels J3-1-12, J3-1-11, J3-1-7, J3-1-10, J3-1-9, J3-1-6, and J3-1-8
- Figure 3-15 PCB Results for Tax Parcels J3-2-2, J3-2-3, J3-2-4, J3-2-5, and J3-2-6
- Figure 3-16 PCB Results for Tax Parcel J2-2-2
- Figure 3-17 PCB Results for Tax Parcels K3-1-19, K3-1-2, and K3-1-1
- Figure 3-18 PCB Results for Tax Parcels K2-1-10, K2-1-5, K2-1-4, K2-1-3, and K2-1-2
- Figure 3-19 PCB Results for Tax Parcel J2-2-1
- Figure 3-20 PCB Results for Tax Parcel K2-1-1
- Figure 3-21 PCB Results for Tax Parcel K1-1-10
- Figure 3-22 PCB Results for Tax Parcel 33-40
- Figure 3-23 PCB Results for Tax Parcel 34-1
- Figure 3-24 PCB Results for Tax Parcel 29-3
- Figure 3-25 PCB Results for Tax Parcels 29-9 and 29-5
- Figure 3-26 PCB Results for Tax Parcel 29-2
- Figure 3-27 PCB Results for Tax Parcel 29-1
- Figure 3-28 PCB Results for Tax Parcel 23-37

**VOLUME II
LIST OF FIGURES
(Continued)**

Title

- Figure 3-29 PCB Results for Tax Parcels 24-7, 24-6, 24-5, 24-4, 24-3, and 24-1
- Figure 3-30 PCB Results for Tax Parcels 19-3 and 19-2
- Figure 3-31 PCB Results for Tax Parcels 18-84 and 19-5
- Figure 3-32 PCB Results for Tax Parcel 18-85
- Figure 3-33 PCB Results for Tax Parcel 19-1
- Figure 3-34 PCB Results for Tax Parcels 18-86 and 13-1
- Figure 3-35 PCB Results for Tax Parcel 13-2
- Figure 3-36 PCB Results for Tax Parcels 14-4 and 1-4
- Figure 3-37 PCB Results for Tax Parcels 1-3, 1-1, and 2-8
- Figure 3-38 PCB Results for Tax Parcels 9-14, 9-16, 9-17, 9-18, and 2-4
- Figure 3-39 Index of Utility Easement Maps for Reaches 5 and 6
- Figure 3-40 PCB Results for Utility Easements 1, 2, 3, and 4
- Figure 3-41 PCB Results for Utility Easements 5, 6, and 7
- Figure 3-42 PCB Results for Utility Easements 8, 9, and 10
- Figure 3-43 PCB Results for Utility Easements 11 and 12
- Figure 3-44 PCB Results for Utility Easement 13
- Figure 3-45 Index of Riverbank and Sediment Exposure Area Maps for Reaches 5 and 6

**VOLUME II
LIST OF FIGURES
(Continued)**

Title

- Figure 3-46 PCB Results for Exposure Area 1
- Figure 3-47 PCB Results for Exposure Area 2
- Figure 3-48 PCB Results for Exposure Area 3
- Figure 3-49 PCB Results for Exposure Area 4
- Figure 3-50 PCB Results for Exposure Area 5
- Figure 3-51 PCB Results for Exposure Area 6
- Figure 3-52 PCB Results for Exposure Area 7
- Figure 3-53 PCB Results for Exposure Area 8
- Figure 3-54 PCB Results for Exposure Area 9
- Figure 3-55 PCB Results for Exposure Area 10
- Figure 3-56 PCB Results for Exposure Area 11
- Figure 3-57 PCB Results for Exposure Area 12
- Figure 3-58 PCB Results for Exposure Area 13
- Figure 3-59 PCB Results for Exposure Area 14
- Figure 3-60 PCB Results for Exposure Area 15
- Figure 3-61 PCB Results for Exposure Area 16
- Figure 3-62 PCB Results for Exposure Area 17

**VOLUME II
LIST OF FIGURES
(Continued)**

Title

- Figure 3-63 PCB Results for Exposure Area 18
- Figure 3-64 PCB Results for Exposure Area 19
- Figure 3-65 PCB Results for Exposure Area 20
- Figure 3-66 PCB Results for Exposure Area 21
- Figure 3-67 PCB Results for Exposure Area 22
- Figure 3-68 PCB Results for Exposure Area 23
- Figure 4-1 [Index of High-Contact Residential Floodplain Maps for Reaches 7 and 8](#)
- Figure 4-2 [PCB Results in Floodplain High-Contact Residential Areas](#)
- Figure 4-3 [PCB Results in Floodplain High-Contact Residential Areas](#)
- Figure 4-4 [PCB Results in Floodplain High-Contact Residential Areas](#)
- Figure 4-5 [PCB Results in Floodplain High-Contact Residential Areas](#)
- Figure 4-6 [PCB Results in Floodplain High-Contact Residential Areas](#)
- Figure 4-7 [PCB Results in Floodplain High-Contact Residential Areas](#)
- Figure 4-8 [PCB Results in Floodplain High-Contact Residential Areas](#)
- Figure 4-9 [PCB Results in Floodplain High-Contact Residential Areas](#)
- Figure 4-10 [PCB Results in Floodplain High-Contact Residential Areas](#)
- Figure 4-11 [PCB Results in Floodplain High-Contact Residential Areas](#)

**VOLUME II
LIST OF FIGURES
(Continued)**

Title

Figure 4-12 PCB Results in Floodplain High-Contact Residential Areas

Figure 4-13 PCB Results in Floodplain High-Contact Residential Areas

Figure 4-14 PCB Results in Floodplain High-Contact Residential Areas

Figure 4-15 PCB Results in Floodplain High-Contact Residential Areas

Figure 4-16 Index of Floodplain Maps (Non-HCRA) for Reaches 7 and 8

Figure 4-17 PCB Results of Floodplain Soils in Exposure Areas

Figure 4-18 PCB Results of Floodplain Soils in Exposure Areas

Figure 4-19 PCB Results of Floodplain Soils in Exposure Areas

Figure 4-20 PCB Results of Floodplain Soils in Exposure Areas

Figure 4-21 PCB Results of Floodplain Soils in Exposure Areas

Figure 4-22 PCB Results of Floodplain Soils in Exposure Areas

Figure 4-23 PCB Results of Floodplain Soils in Exposure Areas

Figure 4-24 PCB Results of Floodplain Soils in Exposure Areas

Figure 4-25 PCB Results of Floodplain Soils in Exposure Areas

Figure 4-26 PCB Results of Floodplain Soils in Exposure Areas

Figure 4-27 PCB Results of Floodplain Soils in Exposure Areas

Figure 4-28 PCB Results of Floodplain Soils in Exposure Areas

**VOLUME II
LIST OF FIGURES
(Continued)**

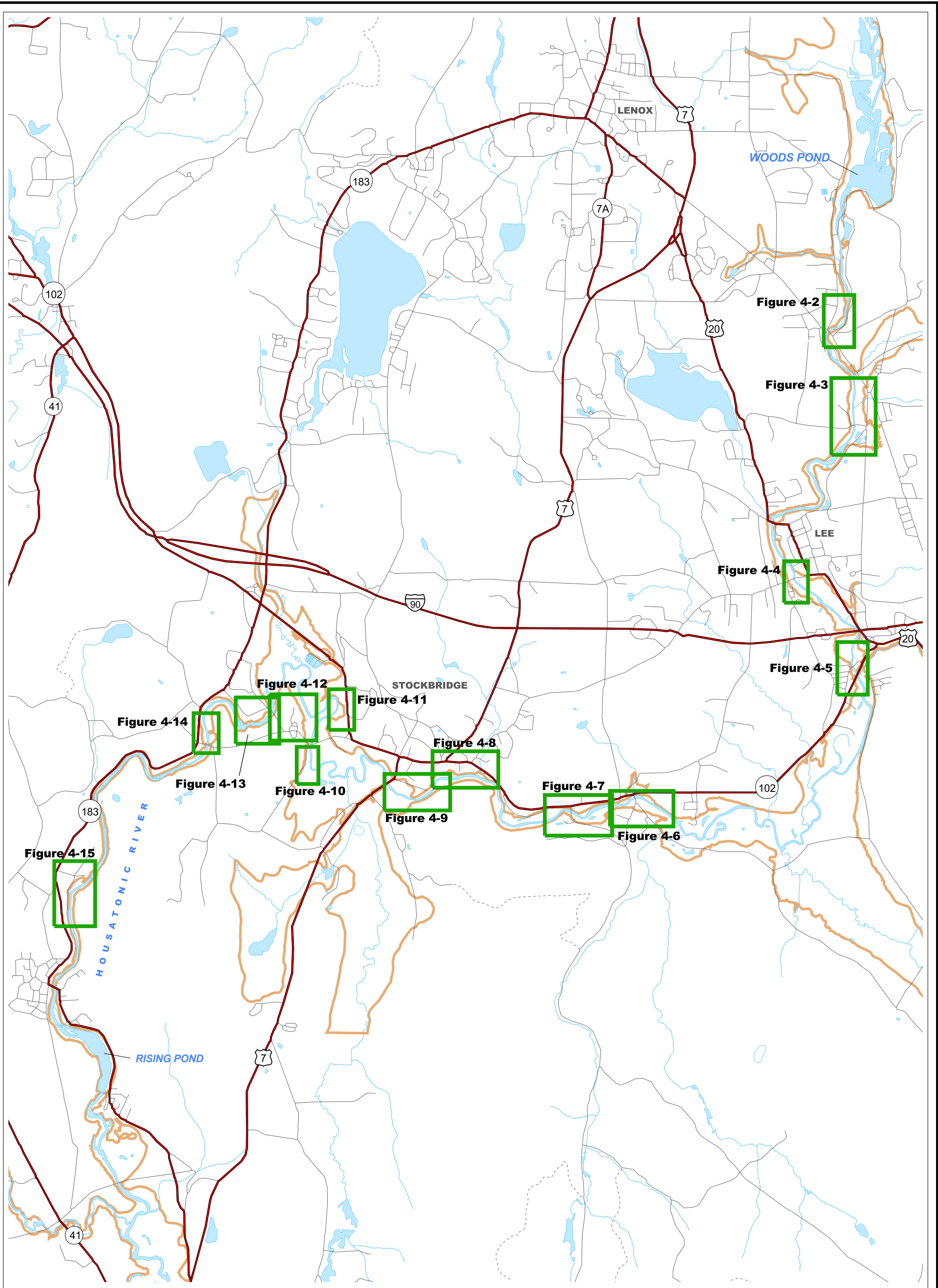
Title

- Figure 4-29 PCB Results of Floodplain Soils in Exposure Areas
- Figure 4-30 PCB Results of Floodplain Soils in Exposure Areas
- Figure 4-31 PCB Results of Floodplain Soils in Exposure Areas
- Figure 4-32 PCB Results of Floodplain Soils in Exposure Areas
- Figure 4-33 PCB Results of Floodplain Soils in Exposure Areas
- Figure 4-34 PCB Results of Floodplain Soils in Exposure Areas
- Figure 4-35 PCB Results of Floodplain Soils in Exposure Areas
- Figure 4-36 Index of Sediment Maps For Reaches 7 and 8
- Figure 4-37 PCB Results for the Area Between the Woods Pond Dam and Golden Hill Road
- Figure 4-38 PCB Results for the Columbia Mill Dam Impoundment Area
- Figure 4-39 PCB Results for the Eagle Mill Dam Impoundment Area
- Figure 4-40 PCB Results for the Area Between Route 20 and Meadow Street
- Figure 4-41 PCB Results for the Willow Mill Dam Impoundment Area
- Figure 4-42 PCB Results for the Area Between the Willow Mill Dam Impoundment Area and Glendale Middle Road
- Figure 4-43 PCB Results for the Glendale Dam Impoundment Area
- Figure 4-44 PCB Results for the Area Between the Glendale Impoundment Area and the Route 183 Bridge
- Figure 4-45 PCB Results for the Rising Pond Impoundment Area

**VOLUME II
LIST OF FIGURES
(Continued)**

Title

- Figure 5-1 Index of Figures for Section 5
- Figure 5-2 PCB Results for Reach 9 Agricultural Area
- Figure 5-3 PCB Results for Bartholomew's Cobble Recreation Area



LEGEND:

-  Roads
-  Housatonic River
-  100-year Floodplain

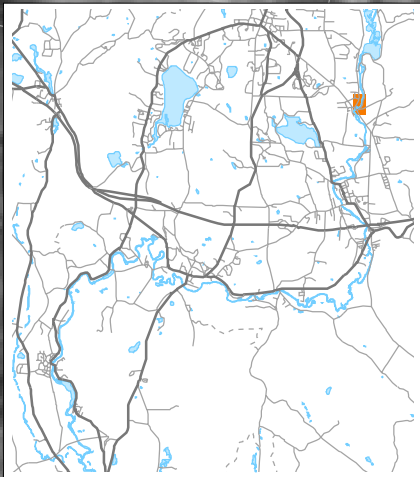


Scale in Feet



Phase 1 - Human Health Risk Assessment
 GE Housatonic River Project
 Pittsfield, Massachusetts

**FIGURE 4-1
 INDEX OF HIGH-CONTACT
 RESIDENTIAL FLOODPLAIN
 MAPS FOR REACHES 7 AND 8**



4-73

FL001500

FL001498

FL001499

FL001403

FL001501

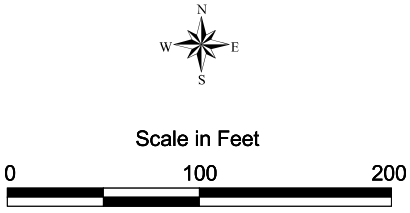
FL001404

PARCEL	TOTAL ACRES	HCRA ACRES	HCRA ACRES IN FLOODPLAIN
4-73	3.545	1.905	1.654

HCRA = High Contact Residential Area

LEGEND:

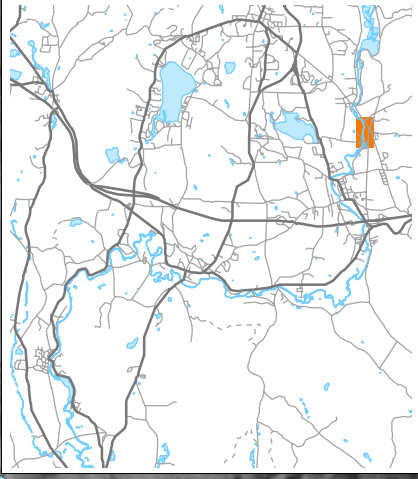
- Floodplain Sample, Surface (0 - 0.5 feet)
- Floodplain Sample, Sub-surface (0.5 - 1 feet)
- PCB Results Key (ppm) < 1
- PCB Results Key (ppm) 1 - 2
- PCB Results Key (ppm) 2 - 4
- PCB Results Key (ppm) 4 - 7
- PCB Results Key (ppm) 7 - 25
- PCB Results Key (ppm) 25 - 100
- PCB Results Key (ppm) > 100
- High Contact Residential Area
- Parcel Boundaries
- Housatonic River
- 100-year Floodplain



Phase 1 - Human Health Risk Assessment
GE Housatonic River Project
Pittsfield, Massachusetts

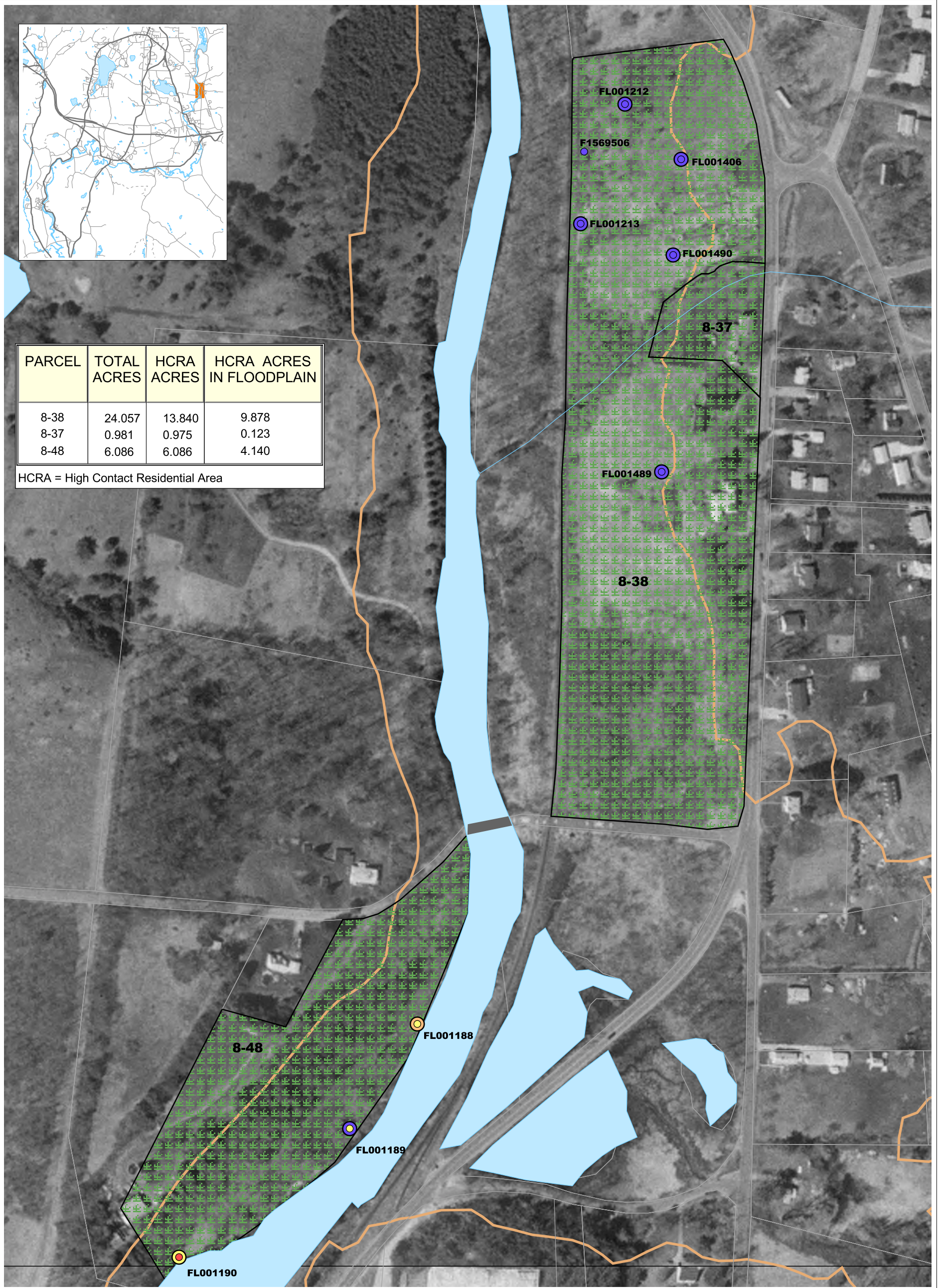
**FIGURE 4-2
PCB RESULTS IN
FLOODPLAIN HIGH-CONTACT
RESIDENTIAL AREAS**

NOTE: Datamart as of September 12, 2001



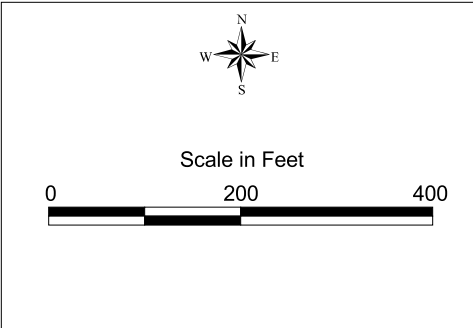
PARCEL	TOTAL ACRES	HCRA ACRES	HCRA ACRES IN FLOODPLAIN
8-38	24.057	13.840	9.878
8-37	0.981	0.975	0.123
8-48	6.086	6.086	4.140

HCRA = High Contact Residential Area



LEGEND:

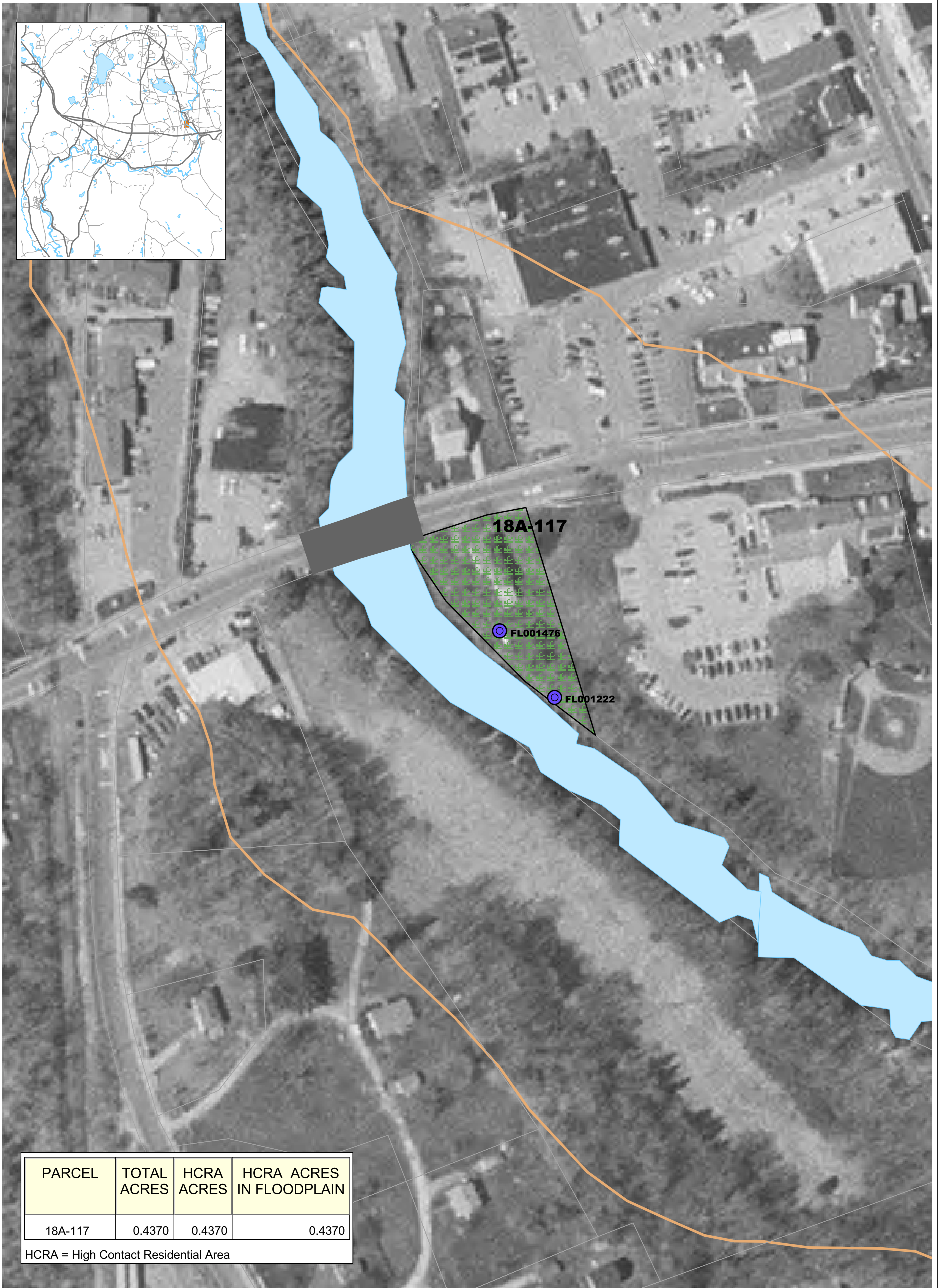
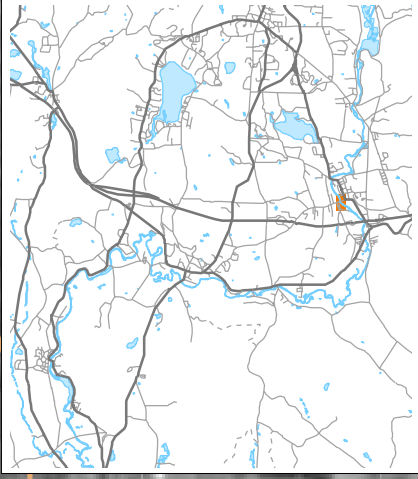
- Floodplain Sample, Surface (0 - 0.5 feet)
- Floodplain Sample, Sub-surface (0.5 - 1 feet)
- PCB Results Key (ppm)
 - < 1
 - 1 - 2
 - 2 - 4
 - 4 - 7
 - 7 - 25
 - 25 - 100
 - > 100
- High Contact Residential Area
- Parcel Boundaries
- Housatonic River
- 100-year Floodplain



Phase 1 - Human Health Risk Assessment
 GE Housatonic River Project
 Pittsfield, Massachusetts

**FIGURE 4-3
 PCB RESULTS IN
 FLOODPLAIN HIGH-CONTACT
 RESIDENTIAL AREAS**

NOTE: Datamart as of September 12, 2001

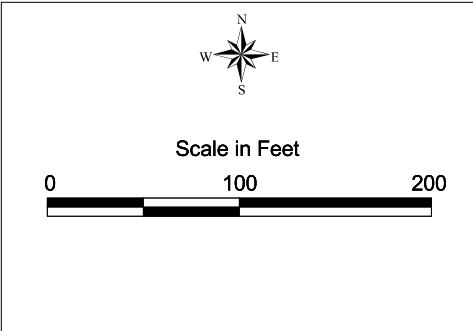


PARCEL	TOTAL ACRES	HCRA ACRES	HCRA ACRES IN FLOODPLAIN
18A-117	0.4370	0.4370	0.4370

HCRA = High Contact Residential Area

LEGEND:

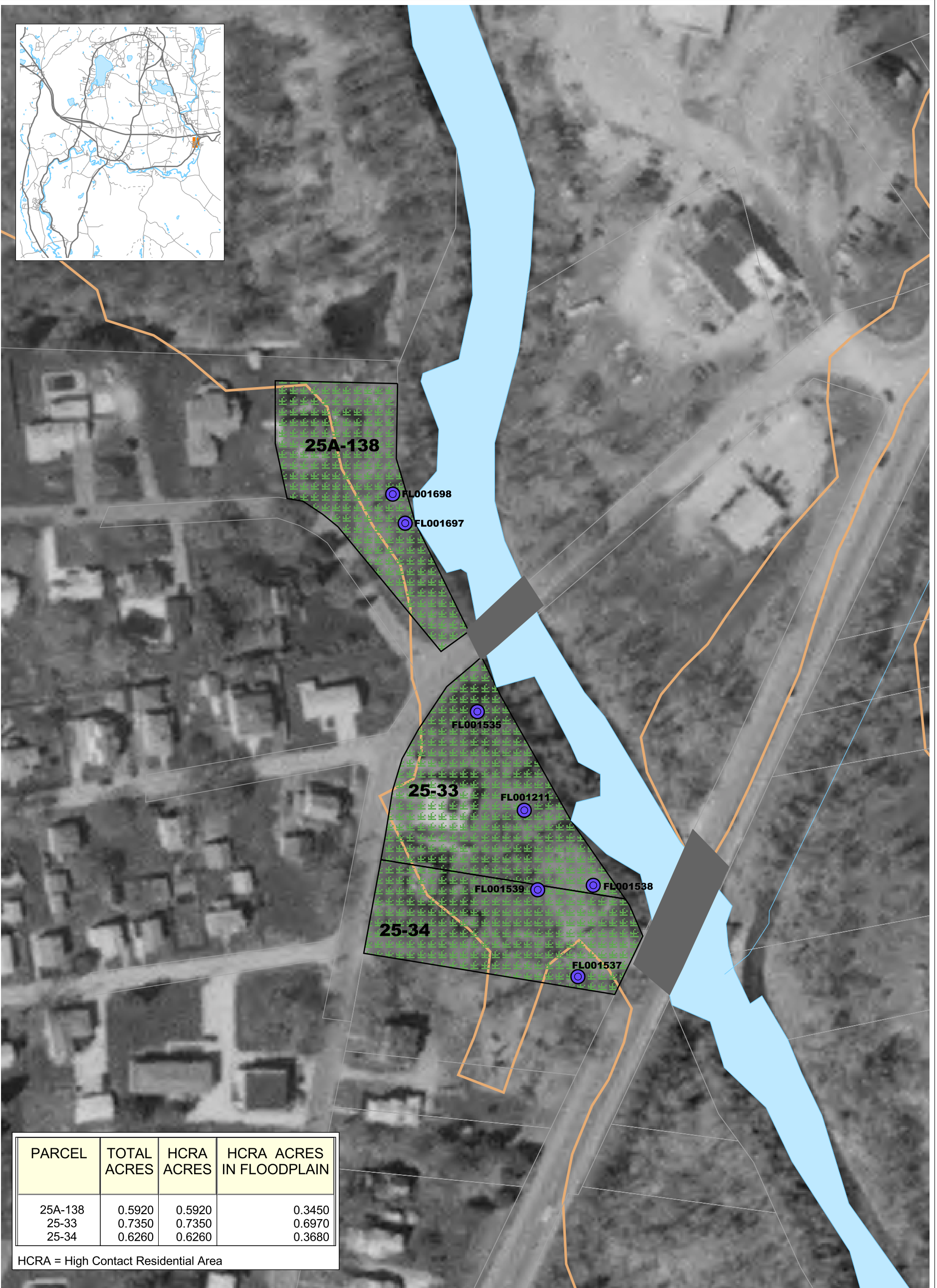
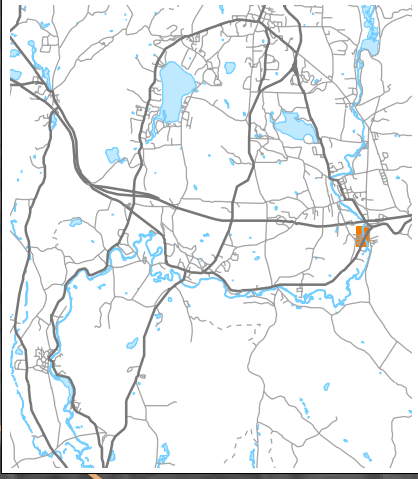
- Floodplain Sample, Surface (0 - 0.5 feet)
 - Floodplain Sample, Sub-surface (0.5 - 1 feet)
 - High Contact Residential Area
 - Parcel Boundaries
 - Housatonic River
 - 100-year Floodplain
- PCB Results Key (ppm)**
- < 1
 - 1 - 2
 - 2 - 4
 - 4 - 7
 - 7 - 25
 - 25 - 100
 - > 100



Phase 1 - Human Health Risk Assessment
 GE Housatonic River Project
 Pittsfield, Massachusetts

**FIGURE 4-4
 PCB RESULTS IN
 FLOODPLAIN HIGH-CONTACT
 RESIDENTIAL AREAS**

NOTE: Datamart as of September 12, 2001

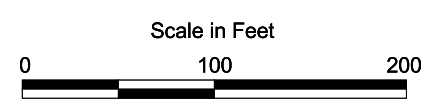


PARCEL	TOTAL ACRES	HCRA ACRES	HCRA ACRES IN FLOODPLAIN
25A-138	0.5920	0.5920	0.3450
25-33	0.7350	0.7350	0.6970
25-34	0.6260	0.6260	0.3680

HCRA = High Contact Residential Area

LEGEND:

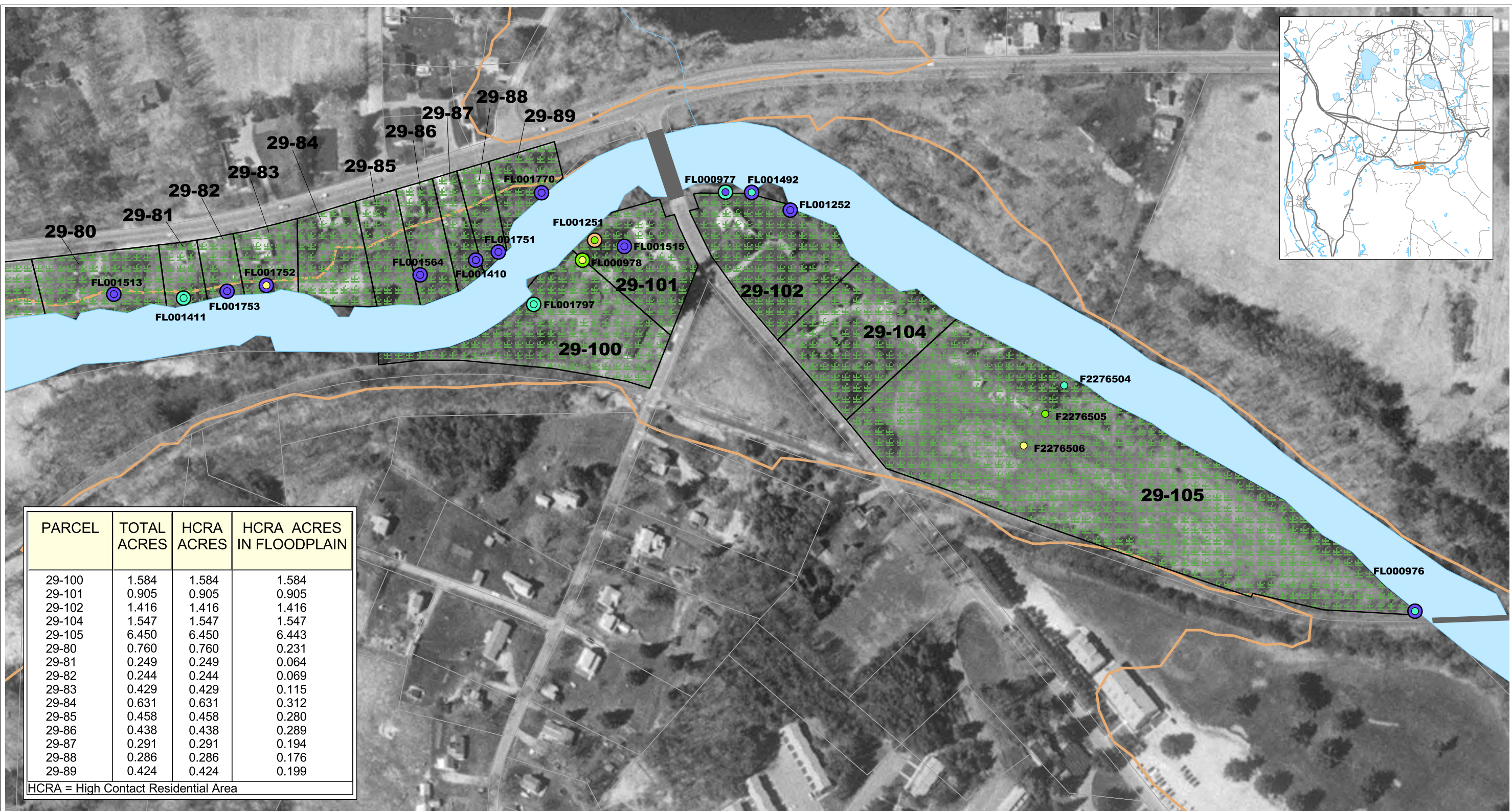
- Floodplain Sample, Surface (0 - 0.5 feet)
 - Floodplain Sample, Sub-surface (0.5 - 1 feet)
 - High Contact Residential Area
 - Parcel Boundaries
 - Housatonic River
 - 100-year Floodplain
- PCB Results Key (ppm)**
- < 1
 - 1 - 2
 - 2 - 4
 - 4 - 7
 - 7 - 25
 - 25 - 100
 - > 100



Phase 1 - Human Health Risk Assessment
GE Housatonic River Project
Pittsfield, Massachusetts

**FIGURE 4-5
PCB RESULTS IN
FLOODPLAIN HIGH-CONTACT
RESIDENTIAL AREAS**

NOTE: Datamart as of September 12, 2001



LEGEND:

- Floodplain Sample, Surface (0 - 0.5 feet)
- Floodplain Sample, Sub-surface (0.5 - 1 feet)

PCB Results Key (ppm)

- < 1
- 1 - 2
- 2 - 4
- 4 - 7
- 7 - 25
- 25 - 100
- > 100

- High Contact Residential Area
- Parcel Boundaries
- Housatonic River
- 100-year Floodplain

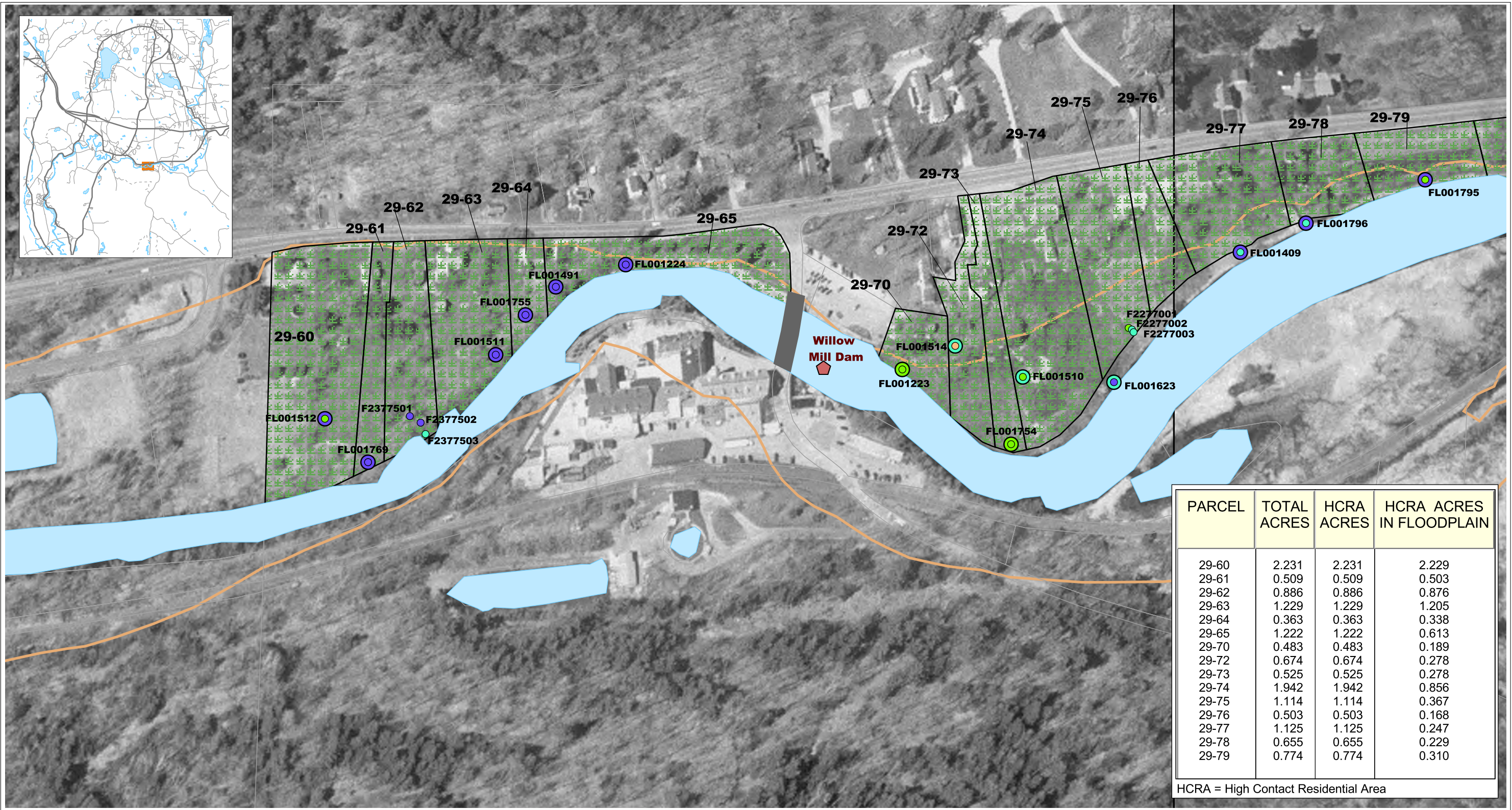
Scale in Feet

0 200 400 600

Phase 1 - Human Health Risk Assessment
 GE Housatonic River Project
 Pittsfield, Massachusetts

FIGURE 4-6
PCB RESULTS IN
FLOODPLAIN HIGH-CONTACT
RESIDENTIAL AREAS

NOTE: Datamart as of Sept 12, 2001



PARCEL	TOTAL ACRES	HCRA ACRES	HCRA ACRES IN FLOODPLAIN
29-60	2.231	2.231	2.229
29-61	0.509	0.509	0.503
29-62	0.886	0.886	0.876
29-63	1.229	1.229	1.205
29-64	0.363	0.363	0.338
29-65	1.222	1.222	0.613
29-70	0.483	0.483	0.189
29-72	0.674	0.674	0.278
29-73	0.525	0.525	0.278
29-74	1.942	1.942	0.856
29-75	1.114	1.114	0.367
29-76	0.503	0.503	0.168
29-77	1.125	1.125	0.247
29-78	0.655	0.655	0.229
29-79	0.774	0.774	0.310

HCRA = High Contact Residential Area

LEGEND:

- Floodplain Sample, Surface (0 - 0.5 feet)
- Floodplain Sample, Sub-surface (0.5 - 1 feet)

PCB Results Key (ppm)

- < 1
- 1 - 2
- 2 - 4
- 4 - 7
- 7 - 25
- 25 - 100
- > 100

- High Contact Residential Area
- Parcel Boundaries
- Housatonic River
- 100-year Floodplain

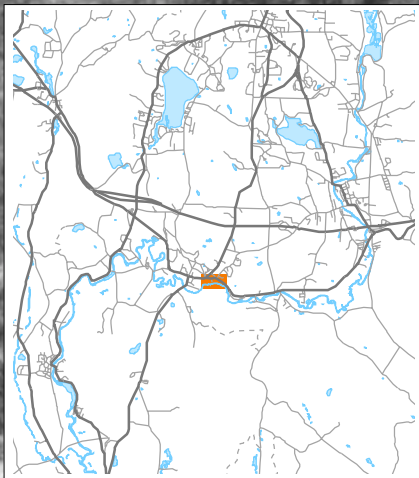
Scale in Feet

0 200 400 600

Phase 1 - Human Health Risk Assessment
 GE Housatonic River Project
 Pittsfield, Massachusetts

**FIGURE 4-7
 PCB RESULTS IN
 FLOODPLAIN HIGH-CONTACT
 RESIDENTIAL AREAS**

NOTE: Datamart as of Sept 12, 2001



PARCEL	TOTAL ACRES	HCRA ACRES	HCRA ACRES IN FLOODPLAIN
26A-24	2.741	2.741	0.616
26A-26.01	2.444	2.444	1.037
26A-27	0.412	0.412	0.089
26A-32	2.160	2.160	1.011
26A-36	0.823	0.823	0.326
26A-36.01	0.936	0.936	0.251
26A-36.02	0.588	0.588	0.248
26A-40	0.840	0.840	0.121
26A-40.01	0.793	0.793	0.135
26A-41	0.632	0.632	0.080
26A-50.01	1.241	1.241	0.174
26A-51	2.148	2.148	0.132
26A-52	1.624	1.624	0.111
26A-53	0.786	0.786	0.092
26A-54	0.682	0.682	0.061
26A-55	0.842	0.842	0.494
26A-56	0.601	0.601	0.280
26A-58	1.086	1.086	0.564
26A-60	1.388	1.388	0.268
26A-61	0.738	0.738	0.085

HCRA = High Contact Residential Area



LEGEND:

- Floodplain Sample, Surface (0 - 0.5 feet)
- Floodplain Sample, Sub-surface (0.5 - 1 feet)

PCB Results Key (ppm)

- < 1
- 1 - 2
- 2 - 4
- 4 - 7
- 7 - 25
- 25 - 100
- > 100

- High Contact Residential Area
- Parcel Boundaries
- Housatonic River
- 100-year Floodplain

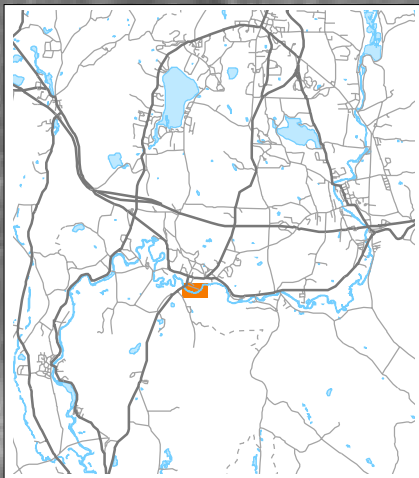
Scale in Feet

0 200 400 600

Phase 1 - Human Health Risk Assessment
 GE Housatonic River Project
 Pittsfield, Massachusetts

FIGURE 4-8
PCB RESULTS IN
FLOODPLAIN HIGH-CONTACT
RESIDENTIAL AREAS

NOTE: Datamart as of Sept 12, 2001



PARCEL	TOTAL ACRES	HCRA ACRES	HCRA ACRES IN FLOODPLAIN
21-63	1.457	1.457	0.537
21-64	1.526	1.526	0.223
21-65	0.920	0.920	0.249
26-84	2.624	2.624	1.628

HCRA = High Contact Residential Area

LEGEND:

- Floodplain Sample, Surface (0 - 0.5 feet)
- Floodplain Sample, Sub-surface (0.5 - 1 feet)

PCB Results Key (ppm)

- < 1
- 1 - 2
- 2 - 4
- 4 - 7
- 7 - 25
- 25 - 100
- > 100

- High Contact Residential Area
- Parcel Boundaries
- Housatonic River
- 100-year Floodplain



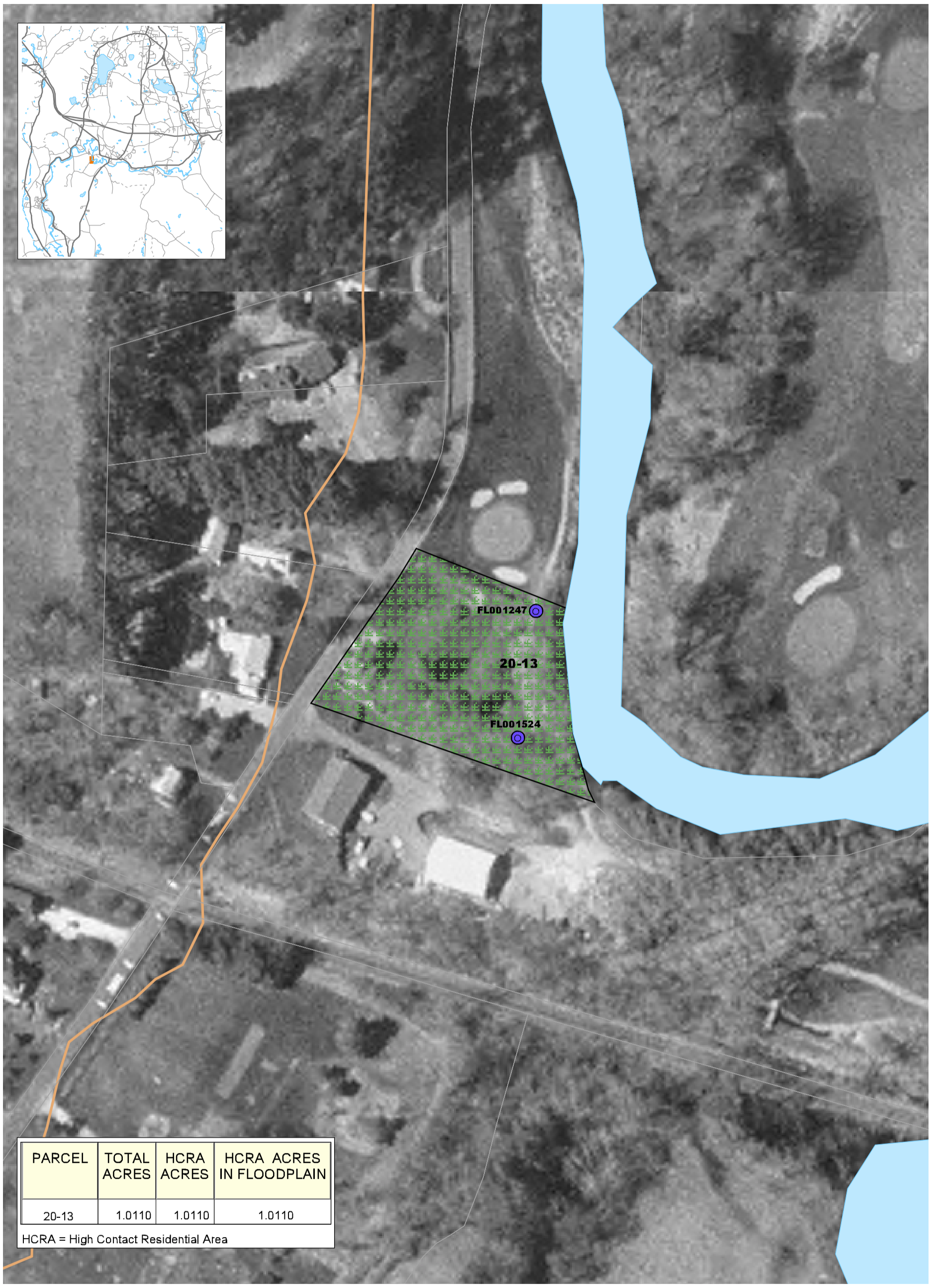
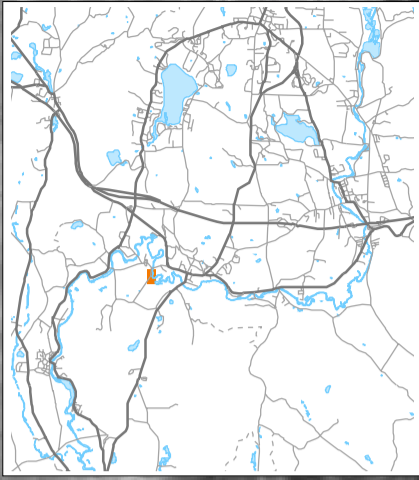
Scale in Feet



Phase 1 - Human Health Risk Assessment
GE Housatonic River Project
Pittsfield, Massachusetts

**FIGURE 4-9
PCB RESULTS IN
FLOODPLAIN HIGH-CONTACT
RESIDENTIAL AREAS**

NOTE: Datamart as of Sept 12, 2001

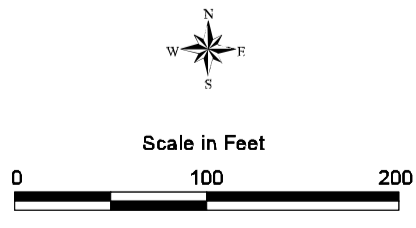


PARCEL	TOTAL ACRES	HCRA ACRES	HCRA ACRES IN FLOODPLAIN
20-13	1.0110	1.0110	1.0110

HCRA = High Contact Residential Area

LEGEND:

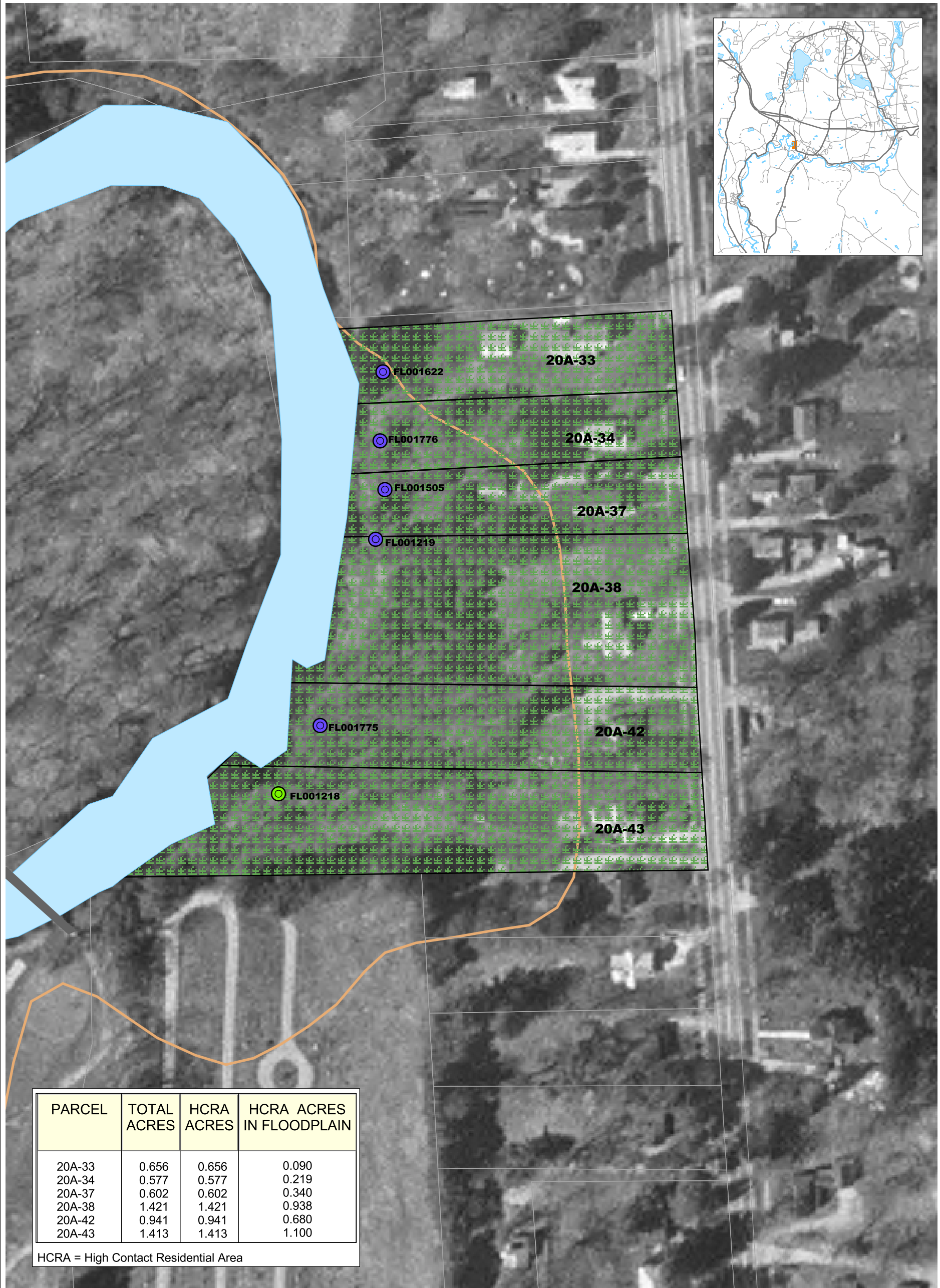
- Floodplain Sample, Surface (0 - 0.5 feet)
 - Floodplain Sample, Sub-surface (0.5 - 1 feet)
 - High Contact Residential Area
 - Parcel Boundaries
 - Housatonic River
 - 100-year Floodplain
- PCB Results Key (ppm)**
- < 1
 - 1 - 2
 - 2 - 4
 - 4 - 7
 - 7 - 25
 - 25 - 100
 - > 100



Phase 1 - Human Health Risk Assessment
 GE Housatonic River Project
 Pittsfield, Massachusetts

**FIGURE 4-10
 PCB RESULTS IN
 FLOODPLAIN HIGH-CONTACT
 RESIDENTIAL AREAS**

NOTE: Datamart as of September 12, 2001

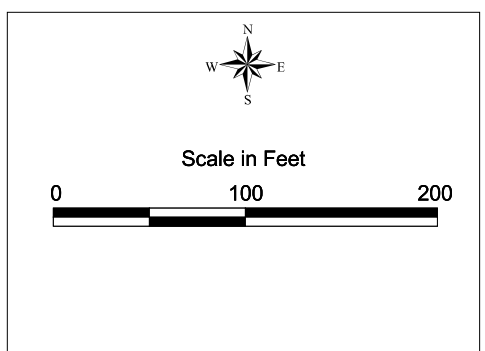


PARCEL	TOTAL ACRES	HCRA ACRES	HCRA ACRES IN FLOODPLAIN
20A-33	0.656	0.656	0.090
20A-34	0.577	0.577	0.219
20A-37	0.602	0.602	0.340
20A-38	1.421	1.421	0.938
20A-42	0.941	0.941	0.680
20A-43	1.413	1.413	1.100

HCRA = High Contact Residential Area

LEGEND:

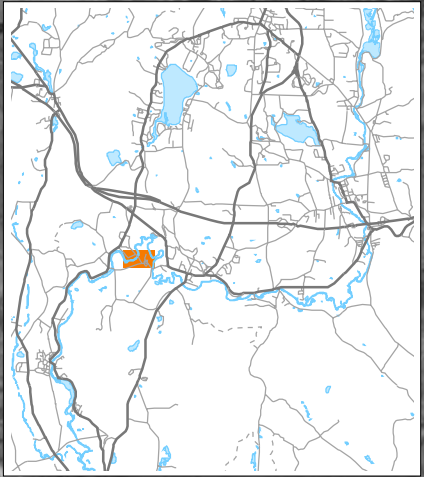
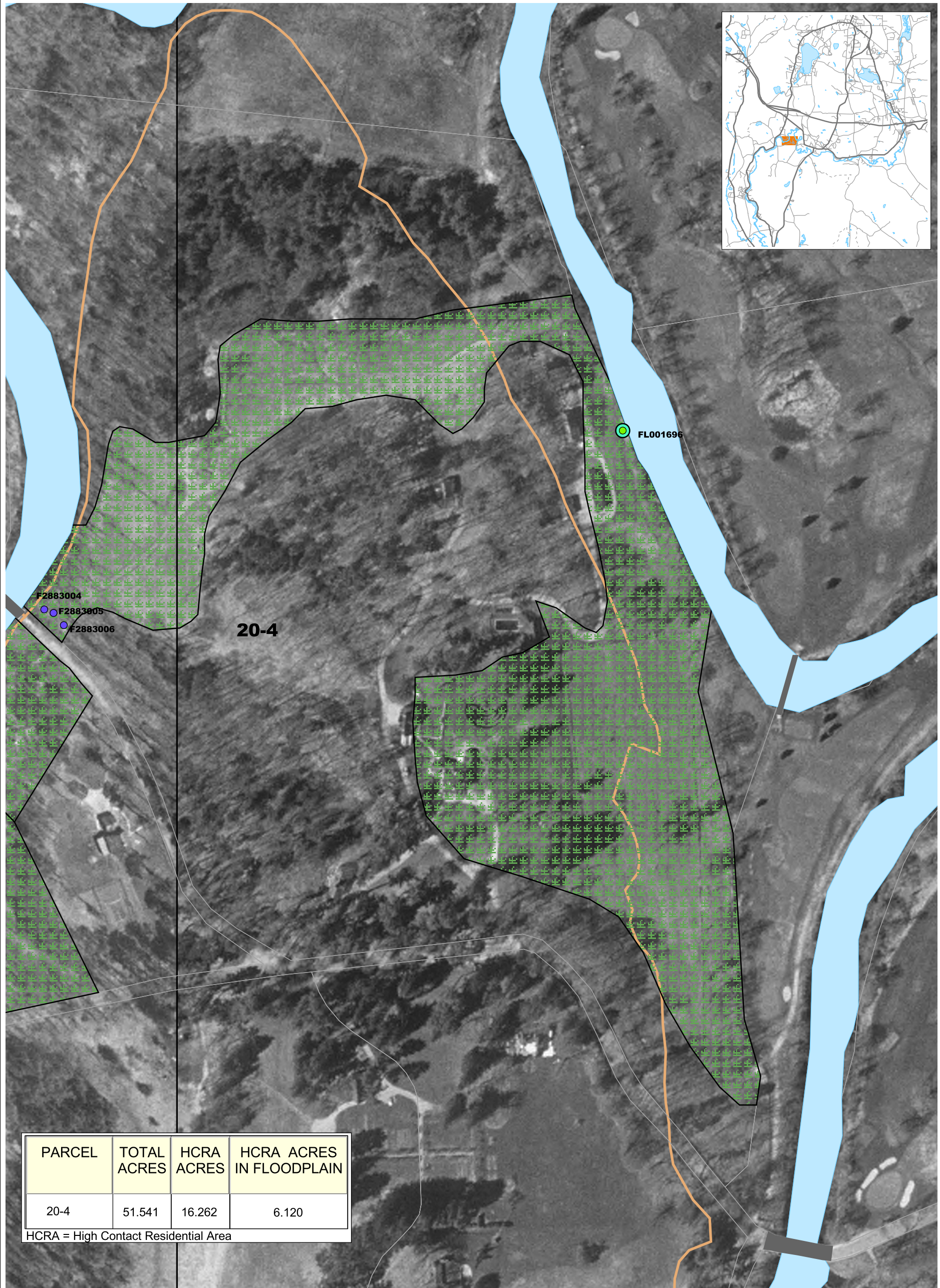
- Floodplain Sample, Surface (0 - 0.5 feet)
- Floodplain Sample, Sub-surface (0.5 - 1 feet)
- PCB Results Key (ppm)
 - < 1
 - 1 - 2
 - 2 - 4
 - 4 - 7
 - 7 - 25
 - 25 - 100
 - > 100
- High Contact Residential Area
- Parcel Boundaries
- Housatonic River
- 100-year Floodplain



Phase 1 - Human Health Risk Assessment
 GE Housatonic River Project
 Pittsfield, Massachusetts

**FIGURE 4-11
 PCB RESULTS IN
 FLOODPLAIN HIGH-CONTACT
 RESIDENTIAL AREAS**

NOTE: Datamart as of September 12, 2001



LEGEND:

PCB Results Key (ppm)

- < 1
- 1 - 2
- 2 - 4
- 4 - 7
- 7 - 25
- 25 - 100
- > 100

- Floodplain Sample, Surface (0 - 0.5 feet)
- Floodplain Sample, Sub-surface (0.5 - 1 feet)

- High Contact Residential Area
- Parcel Boundaries
- Housatonic River
- 100-year Floodplain

N
W —+— E
S

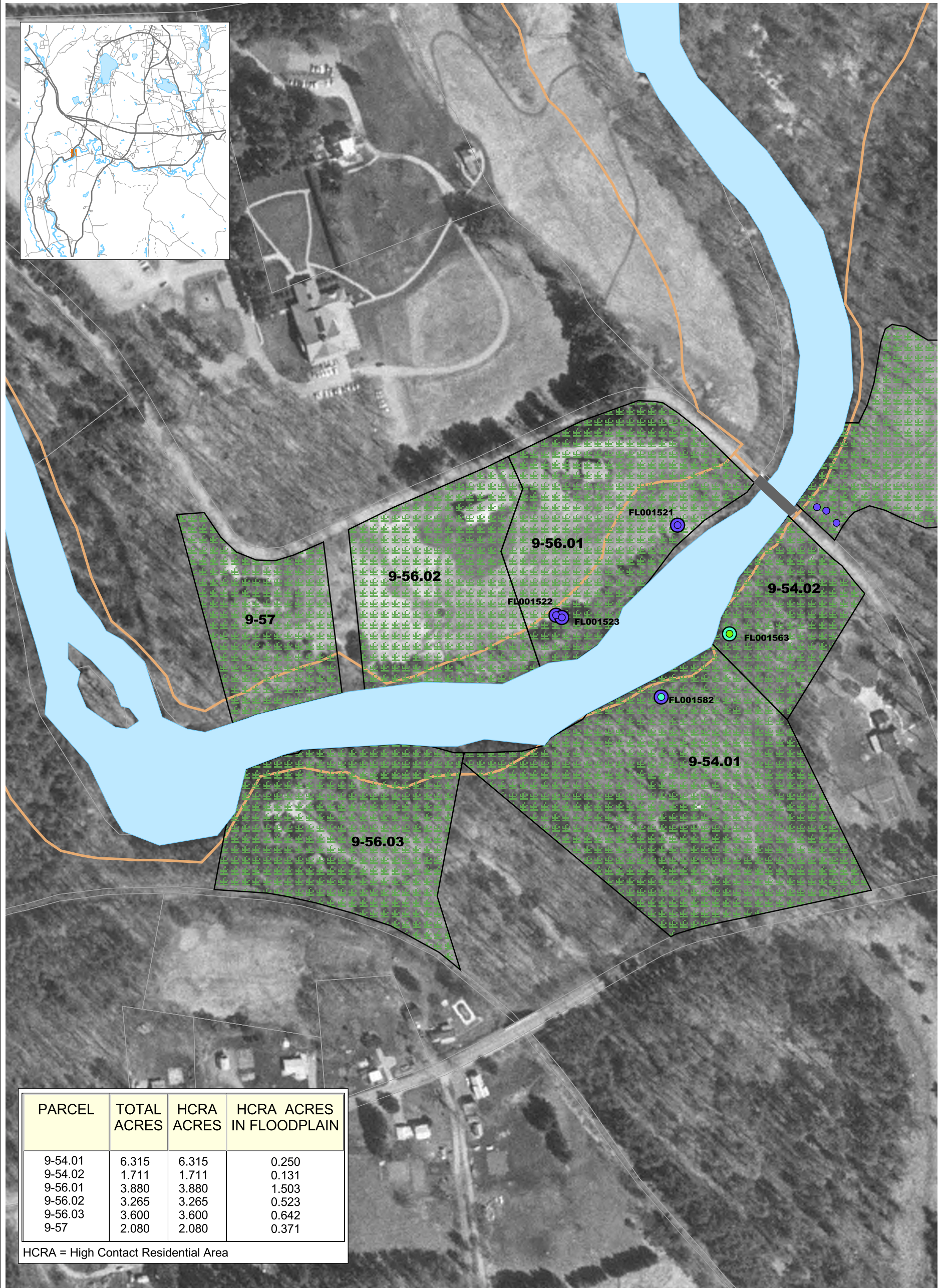
Scale in Feet

0 200 400

Phase 1 - Human Health Risk Assessment
GE Housatonic River Project
Pittsfield, Massachusetts

**FIGURE 4-12
PCB RESULTS IN
FLOODPLAIN HIGH-CONTACT
RESIDENTIAL AREAS**

NOTE: Datamart as of September 12, 2001

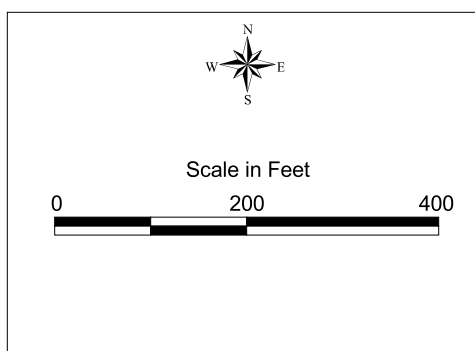


PARCEL	TOTAL ACRES	HCRA ACRES	HCRA ACRES IN FLOODPLAIN
9-54.01	6.315	6.315	0.250
9-54.02	1.711	1.711	0.131
9-56.01	3.880	3.880	1.503
9-56.02	3.265	3.265	0.523
9-56.03	3.600	3.600	0.642
9-57	2.080	2.080	0.371

HCRA = High Contact Residential Area

LEGEND:

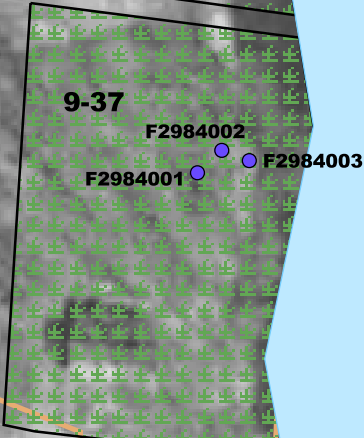
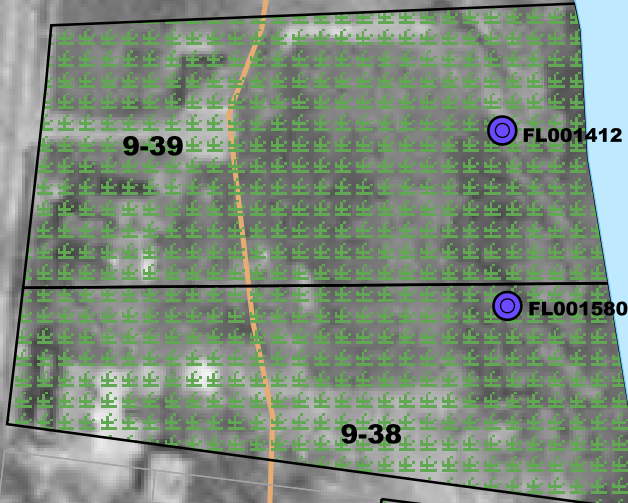
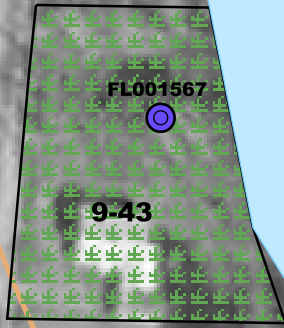
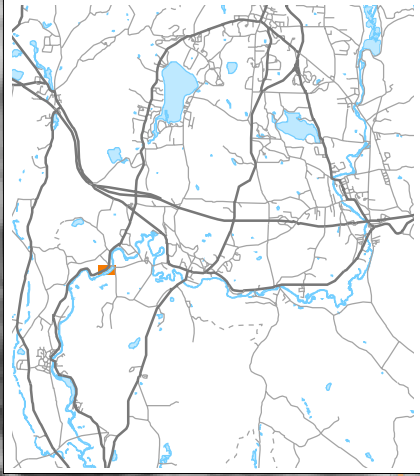
- Floodplain Sample, Surface (0 - 0.5 feet)
- Floodplain Sample, Sub-surface (0.5 - 1 feet)
- < 1
- 1 - 2
- 2 - 4
- 4 - 7
- 7 - 25
- 25 - 100
- > 100
- High Contact Residential Area
- Parcel Boundaries
- Housatonic River
- 100-year Floodplain



Phase 1 - Human Health Risk Assessment
 GE Housatonic River Project
 Pittsfield, Massachusetts

**FIGURE 4-13
 PCB RESULTS IN
 FLOODPLAIN HIGH-CONTACT
 RESIDENTIAL AREAS**

NOTE: Datamart as of September 12, 2001

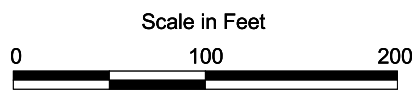


PARCEL	TOTAL ACRES	HCRA ACRES	HCRA ACRES IN FLOODPLAIN
9-43	0.434	0.434	0.431
9-39	0.933	0.933	0.596
9-38	0.691	0.691	0.452
9-37	0.771	0.771	0.764

HCRA = High Contact Residential Area

LEGEND:

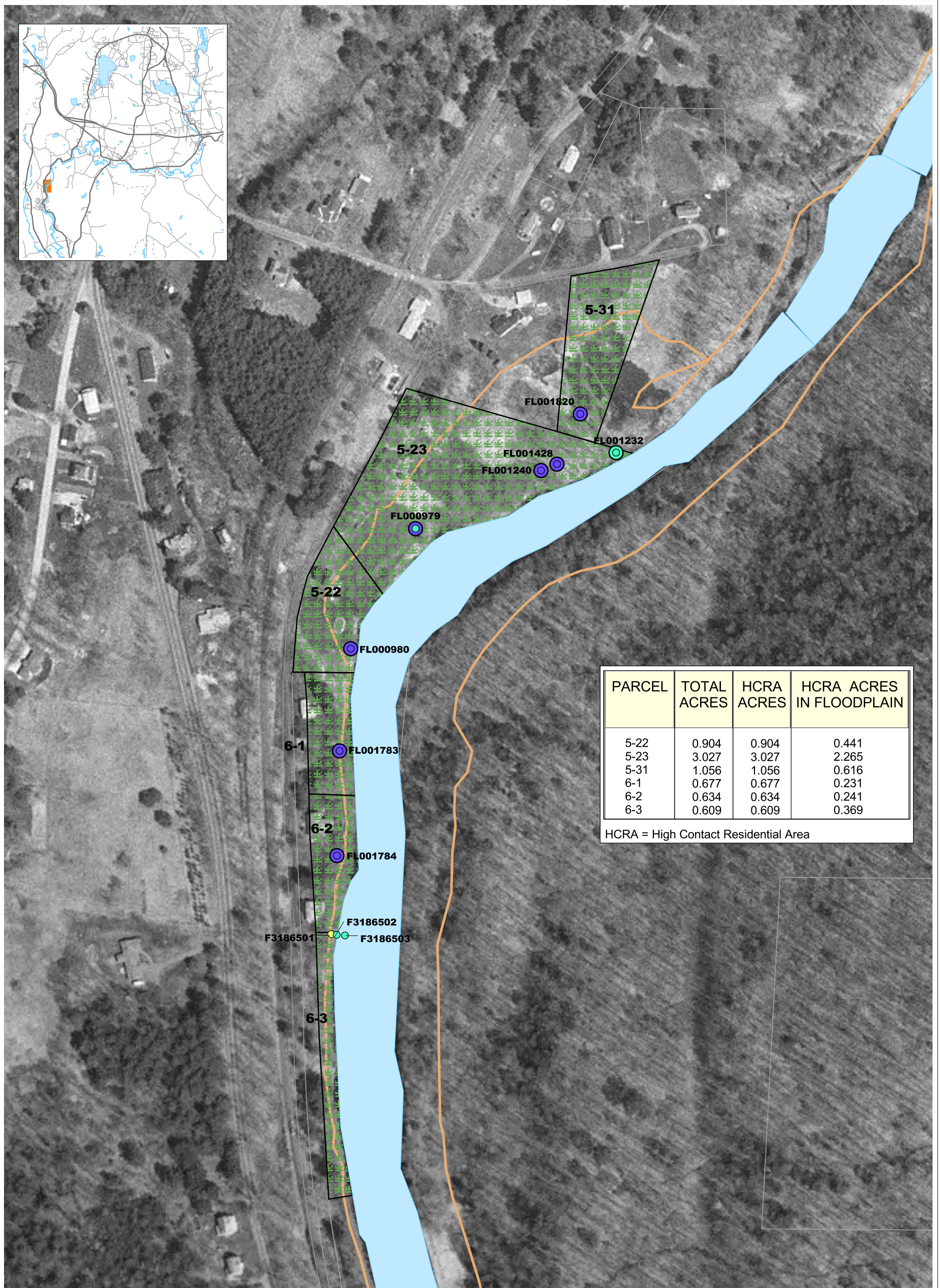
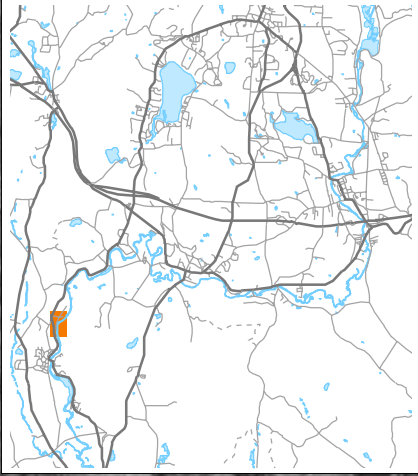
- Floodplain Sample, Surface (0 - 0.5 feet)
 - Floodplain Sample, Sub-surface (0.5 - 1 feet)
 - High Contact Residential Area
 - Parcel Boundaries
 - Housatonic River
 - 100-year Floodplain
- PCB Results Key (ppm)**
- < 1
 - 1 - 2
 - 2 - 4
 - 4 - 7
 - 7 - 25
 - 25 - 100
 - > 100



Phase 1 - Human Health Risk Assessment
GE Housatonic River Project
Pittsfield, Massachusetts

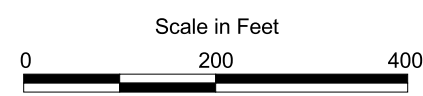
**FIGURE 4-14
PCB RESULTS IN
FLOODPLAIN HIGH-CONTACT
RESIDENTIAL AREAS**

NOTE: Datamart as of September 12, 2001



LEGEND:

- Floodplain Sample, Surface (0 - 0.5 feet)
- Floodplain Sample, Sub-surface (0.5 - 1 feet)
- PCB Results Key (ppm) < 1
- PCB Results Key (ppm) 1 - 2
- PCB Results Key (ppm) 2 - 4
- PCB Results Key (ppm) 4 - 7
- PCB Results Key (ppm) 7 - 25
- PCB Results Key (ppm) 25 - 100
- PCB Results Key (ppm) > 100
- High Contact Residential Area
- Parcel Boundaries
- Housatonic River
- 100-year Floodplain



Phase 1 - Human Health Risk Assessment
GE Housatonic River Project
Pittsfield, Massachusetts

**FIGURE 4-15
PCB RESULTS IN
FLOODPLAIN HIGH-CONTACT
RESIDENTIAL AREAS**

NOTE: Datamart as of September 12, 2001