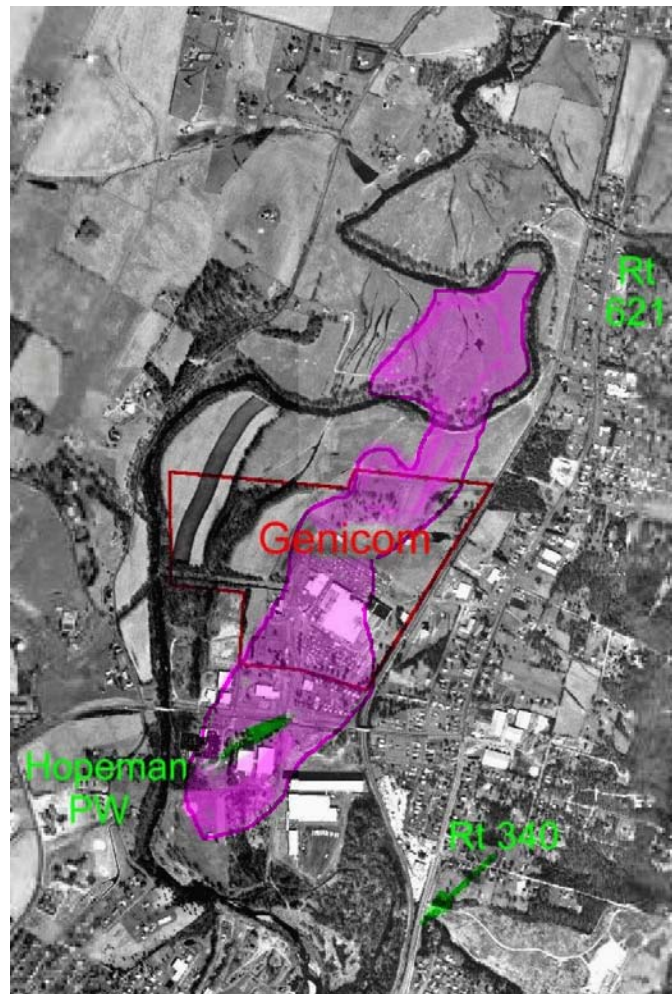


## Region 3 GPRA Baseline RCRA Corrective Action Facility

# Solutions Way Management Facility (former Genicom Corporation)

1 Solutions Way  
Waynesboro, VA 22980  
Congressional District 6



EPA ID #: VAD003132438

Last Updated: 06/01/2008

## Current Progress at the Site

The site investigation was proceeded in phases. In 1992, Genicom completed the first phase investigation which focused on identification of the sources, soil contamination and areas of

concern. In 1998, Genicom submitted a second phase investigation report to EPA, which focused on delineation of the groundwater plume and risk assessment.

An interim stabilization program consisting of a pumping well and an air stripper system was installed in February 1997 to stabilize the TCE-contaminated plume. The system has been in operation since then and has been successful in capturing at least 90 percent of the plume. As a final remedy, EPA will evaluate alternatives to fully capture the contaminated groundwater.

In September 2000, Genicom has completed soil gas sampling adjacent to a residential area located to the south (upgradient) of the facility. The houses in the area may be vulnerable to intrusion of vapor from the shallow plume due to their proximity to the facility. Soil gas samples were extracted from existing shallow wells of which the well screens intercept the vadose zone. TCE vapor was detected at 5.6 ug/m<sup>3</sup>, about one-thousandth the action level EPA required to trigger further investigation. None of the more toxic degradation products of TCE (1,2 dichloroethene, 1,1 dichloroethene and vinyl chloride) were detected at level above detection limits.

In 2001, additional monitoring well and geobrobe installation across the river revealed that the plume has tunneled underneath South River and resurfaced on the north side contaminating a large area in between the river meander. Although the newly discovered contaminated area is presently used as a cow pasture and uninhabited, EPA is concerned that the plume may affect private wells located on the other side of the river meander abutting the plume. The area of concern is serviced by public water, but between 6 to 8 individual homes are on private well. On November 6, 2001, EPA conducted a public meeting in Waynesboro to brief the public, county and city officials of the contamination investigation and asked the public to sign up for water testing. EPA completed sampling of four private wells closest to the plume and found that none were contaminated. Further geoprobe sampling also confirmed that the plume has not crossed the river meander. Sampling of the private wells across the river, as requested by the residents of concern, has further confirmed that plume has not migrated across the river meander. EPA will continue to monitor selected private wells periodically to ensure that no drinking water wells will be impacted in the future. In April 2003, GE has submitted a revised RFI report that has incorporated all new data collected since 2001 for EPA approval. With concurrence from VADEQ, EPA has approved the RFI report in September 2003.

In July 2004 subsequent to EPA's approval of the RFI, GE submitted a Corrective Measures Study (CMS) report to EPA to evaluate remediation alternatives. Based on the CMS, EPA has tentatively identified a remedy (Proposed Remedy) and required GE to submit a Remedy Design Plan, dated December 2005, to provide details on how to implement the Proposed Remedy. The Proposed Remedy consists of expansion of the interim system by adding a second recovery well to the northern edge of the property as well as identifying a number of institutional control measures to prevent human exposure to the contaminated groundwater while it is being cleaned up. On October 18, 2007, EPA issued the draft Statement of Basis on the proposed remedy and announced for public comment opportunity. EPA received only one comment from GE which essentially endorsed EPA's proposed remedy. Since there is no significant comment, the proposed remedy will be the selected remedy. GE has followed through with the selected remedy and completed the construction, pump test, and began operation of the expanded system since spring 2008. EPA will prepare a Final Decision document to formalize implementation of the remedy.

## Site Description

---

The Genicom site is located in a 115-acre parcel near the northern boundary of the City of Waynesboro in Augusta County, Virginia. Prior to 1954, the facility property was an airfield. General Electric (GE) owned and operated an electro-mechanical equipment manufacturing plant at the site from 1954 to 1983. Genicom Corporation bought the facility in 1983 and used it to manufacture computer printers and related equipment. The primary waste streams generated by the facility were waste solvents from painting and etching operations, and inorganic wastes

generated from plating operations. Much of the site contamination is believed to be generated by General Electric operation prior to enactment of the RCRA requirements in the 1980's.

## **Site Responsibility**

---

In 1990, EPA issued a 3008(h) Unilateral Order to Genicom Corporation that required Genicom to conduct a site cleanup investigation. On March 10, 2000, Genicom filed a petition for reorganization under Chapter 11 in the Delaware bankruptcy court. Because Genicom intended to liquidate, there was a potential that Genicom might abandon the facility. Consistent with EPA's Brownfield policy, EPA and the Virginia Department of Environmental Quality (VADEQ) responded by offering innovative approaches and traditional enforcement mechanisms to address environmental concerns and to enable continued facility usage.

On June 19, 2001, EPA, Department of Justice, and Solutions Way Management ("SWM") of Huntington, West Virginia entered into a Prospective Purchaser Agreement (PPA) that provides SWM with a covenant not to sue from the federal government for existing pre-purchase contamination. In return, the PPA requires SWM to perform substantial work relating to existing contamination at the Site. Furthermore, the PPA severely restricts SWM's future use of certain areas of the Site and requires EPA approval with respect to any development in any area of the Site. Additionally, the PPA requires SWM to provide specific notices relating to existing contamination to any successors-in-title or any grantee of any interest in the property. Finally, the PPA gives EPA access to perform or cause others to perform additional remediation.

To facilitate the sale, VADEQ provided a Comfort Letter to SWM to address state liability issues of concern to the purchaser. VADEQ is pursuing the financial assurance posted by the now-bankrupt Genicom in an enforcement action.

SWM, new facility owner, is using the facility for light manufacturing, warehousing and distribution while performing certain environmental work required under the PPA. In the interim, GE continues to operate the interim stabilization system and perform site investigation work on a voluntary basis until EPA can establish a mechanism for long-term clean up responsibility.

In 2006, EPA approved the Remedy Design Plan submitted by GE. EPA is currently preparing a Statement of Basis for issuance and public comment in fall of 2006. GE proposed to install one additional recovery well at the northern edge of the SWM property to expand the interim remedial system to capture the offsite plume. After consideration of public comments, EPA will select the final remedy and issue an Order to GE to formalize the process for implementation of the remedy.

## **Contaminants**

---

Although the site has been contaminated by a range of organic and metal wastes, only TCE and its degradation products have leached significantly into groundwater and migrated offsite. The deep (Zone 2) plume has extended approximately 2,000 feet downgradient (north) of and 800 feet upgradient (south) of the facility boundary. The upgradient extension is believed to be caused by an abandoned municipal well which was in operation in the 1960s. The area surrounding the facility is serviced by public water with a few individual homes that are on private wells. In December 2001, EPA sampled several private wells nearest the plume and confirmed that none have been contaminated by the Genicom plume.

One residential area to the south (upgradient) of the facility could be affected by vapor intrusion from the shallow plume due to their proximity to the facility. In 2000, a soil gas sampling near the homes confirmed that the vapor plume has not reached the residential area of concern.

Ecological impact has not been determined to be a factor of concern. The contaminant levels reaching the river are estimated to be substantially below State Water Quality criteria.

## **Community Interaction**

---

On January 30, 1997, EPA held a public meeting at the Genicom facility to inform the public of the investigation activities and the start up of an interim stabilization system. The interim system has been in operation since then. One commercial property owner complained to Virginia congressmen that he was not informed of the contamination earlier. EPA responded that offsite contamination was not confirmed until a few months before the 1997 public meeting.

EPA has been in contact with local officials periodically to update the investigation progress. On November 6, 2001, EPA conducted a second public meeting in Waynesboro to brief the public, county and city officials of the investigation in light of the new contamination discovery across the river meander. Several residents signed up for water testing. EPA tested their wells within a month after the public meeting and the results, where were all negative, were mailed to the residents. Two local newspapers published EPA's findings and the coverage was fair and positive.

## **Institutional Controls**

---

No institutional controls are currently in place.

## **Government Contact**

---

EPA Project Manager  
Mr. Andrew Fan - 3LC20  
U.S. Environmental Protection Agency - Region III  
1650 Arch Street  
Philadelphia, PA 19103-2029  
Phone: (215) 814-3426  
Email: [fan.andrew@epa.gov](mailto:fan.andrew@epa.gov)

Mr. Richard Criqui  
Virginia Department of Environmental Quality  
P.O. Box 10009  
Richmond, VA 23240  
Phone: (804) 698-4013  
Email: [rjcriqui@deq.virginia.gov](mailto:rjcriqui@deq.virginia.gov)

For more information about EPA's corrective action webpage, including Environmental Indicators, please visit our site at: [www.epa.gov/reg3wcmd/correctiveaction.htm](http://www.epa.gov/reg3wcmd/correctiveaction.htm)