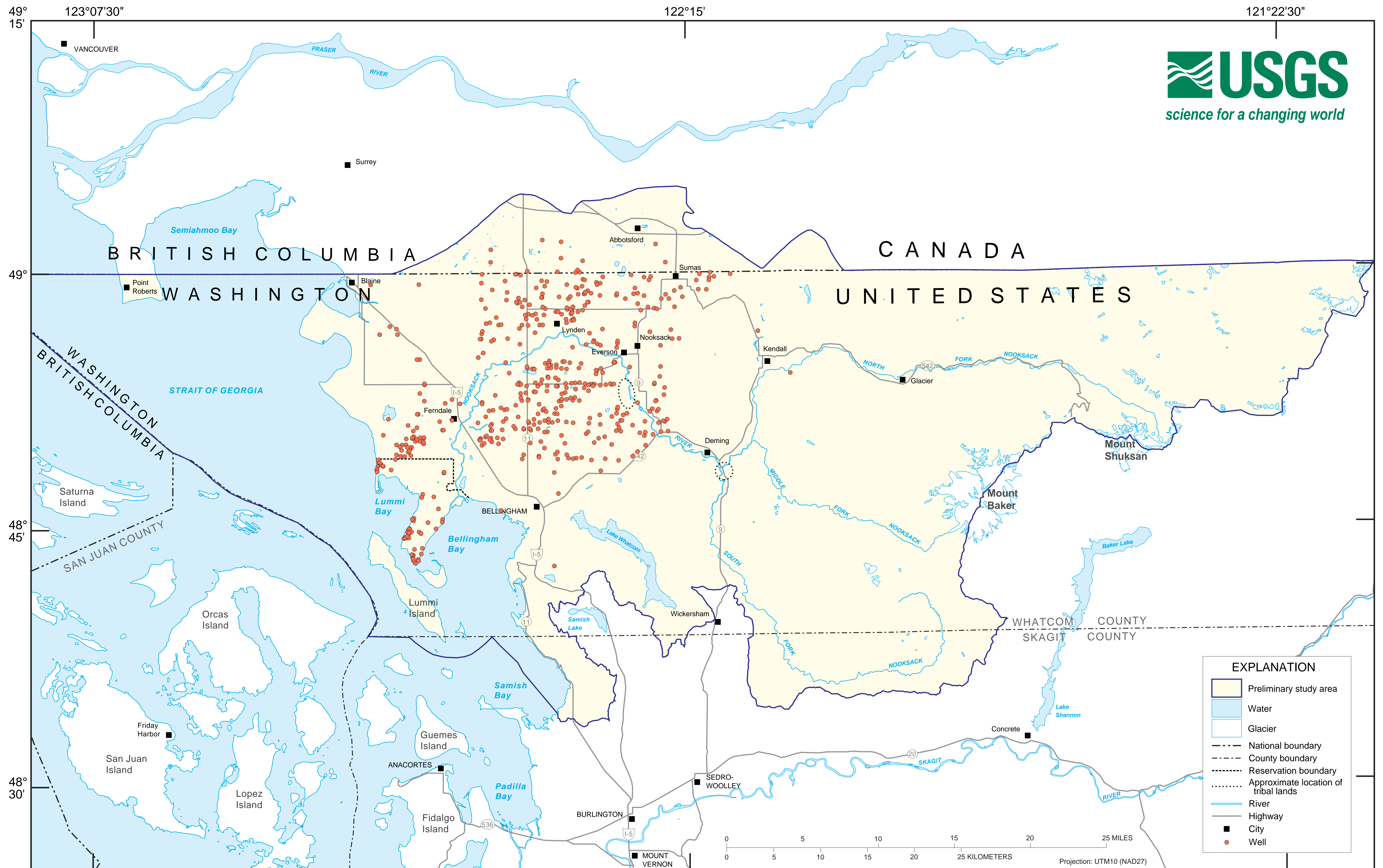


Locations of Selected Wells in the WRIA 1 Study Area with Sufficient Information to Compute Hydraulic Conductivities



From: USGS National Water Information System (NWIS), downloaded December 14, 1999. Not all well locations have been verified and therefore they may plot in the wrong locations.

Note: There are wells not in the USGS National Water Information System (NWIS) that can also be used to compute hydraulic conductivities.

Provisional and subject to revision. Last modified, January 31, 2000.