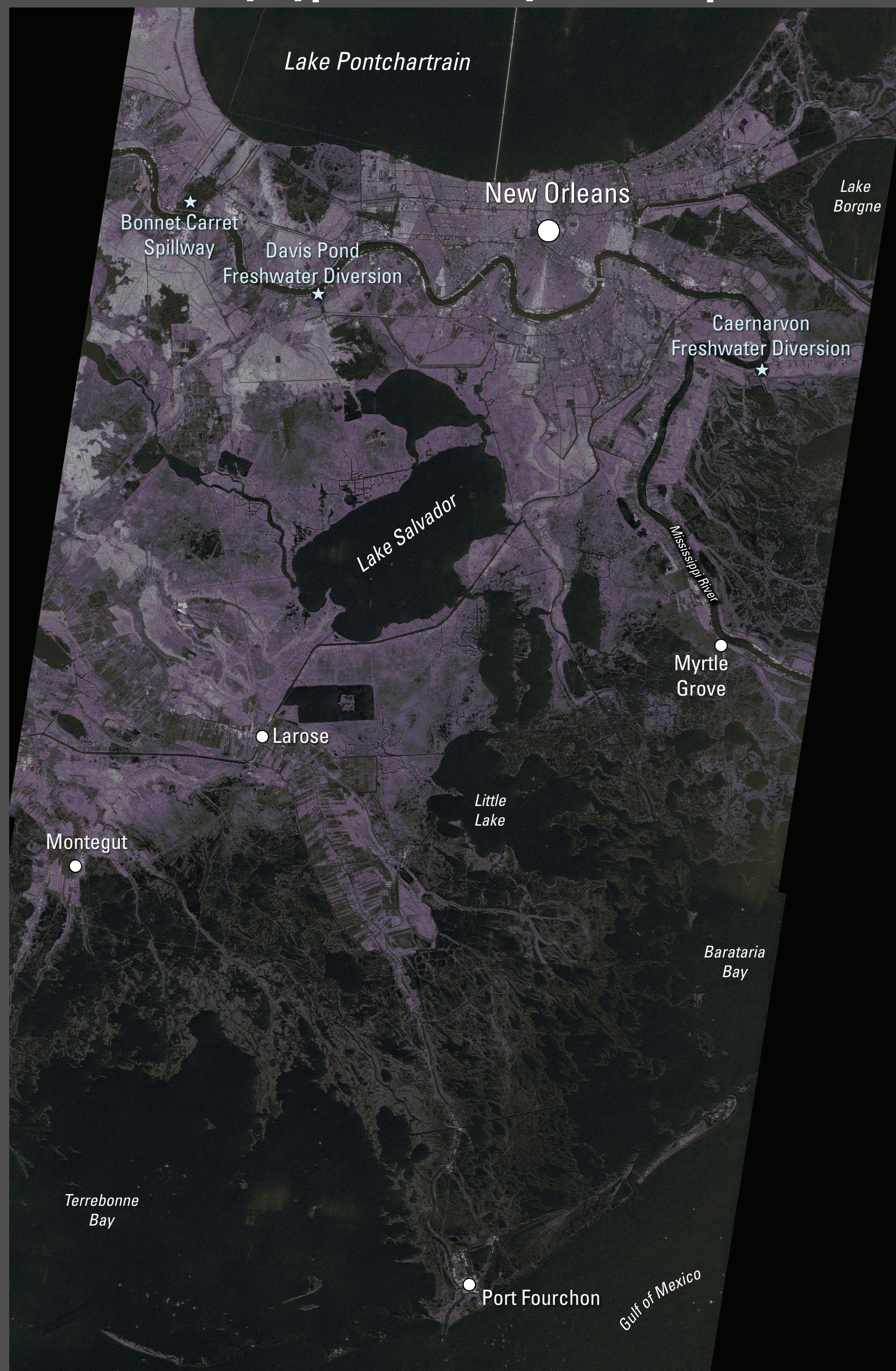
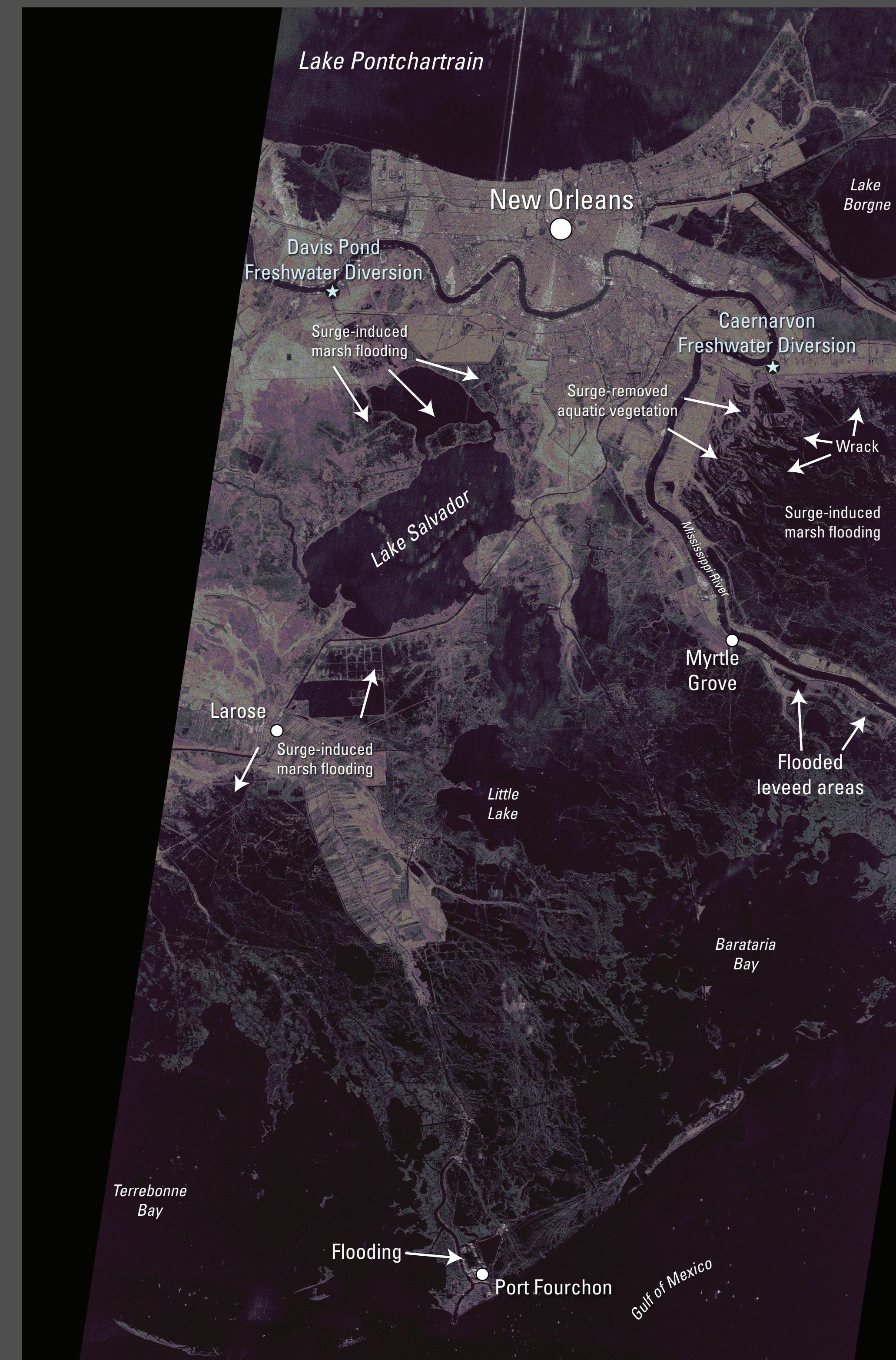


## Comparison of Surge Impacts After Hurricane Gustav—Southeast, Louisiana (Phased Array Type L-band Synthetic Aperture Radar Satellite Imagery—PALSAR)



April 6, 2008 PALSAR Image



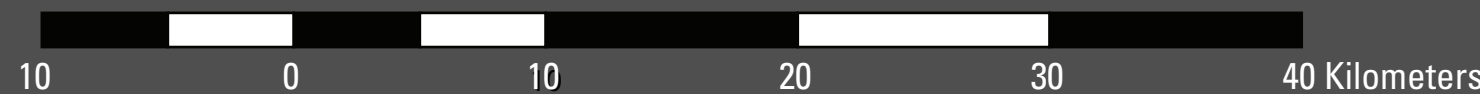
September 3, 2008 Palsar Image

The September 3, 2008 PALSAR image records flooding from Hurricane Gustav. Remnant surge flooding occurring two days after landfall is depicted as dark patches occurring in fresh through saline marsh areas south of New Orleans.

Imagery Source:  
ALOS PALSAR data was provided by the Japanese Space Agency through the International Charter Space & Major Disasters.



Scale 1:300,000



DRAFT DS XXX

Preliminary visual examination September 10, 2008.

U.S. Department of the Interior  
U.S. Geological Survey

Contact: John Barras  
barrasj@usgs.gov