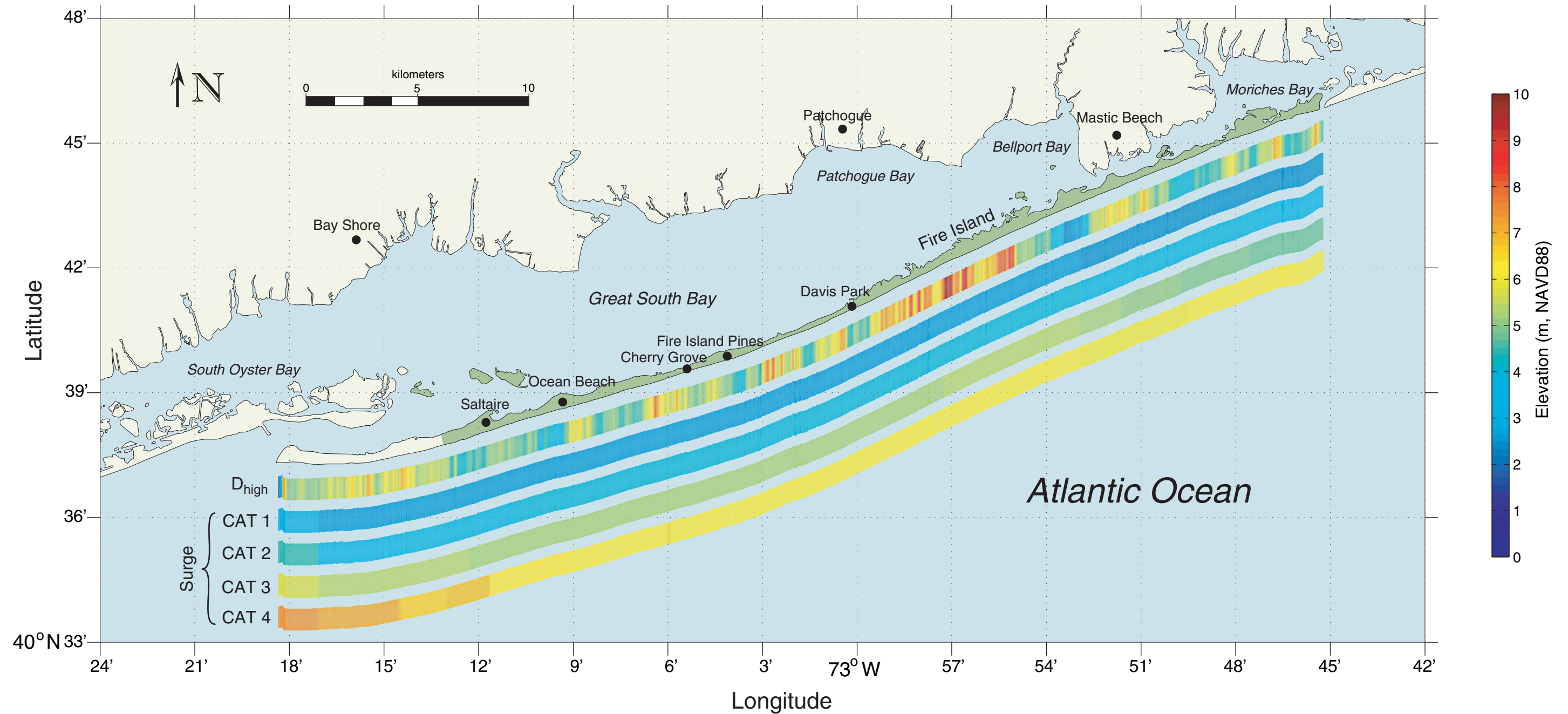


Fire Island National Seashore, New York

Dune and surge elevations



Note: Dune elevations (D_{high}) were measured from a lidar topographic survey conducted on April 29, 2007. Surge values along the open coast (R_{low}) were extracted from the NOAA SLOSH model and represent the maximum of the maximum. The NOAA SLOSH model does not simulate surge for category 5 storms north of North Carolina.

Prepared by:

 science for a changing world

Prepared for:
