



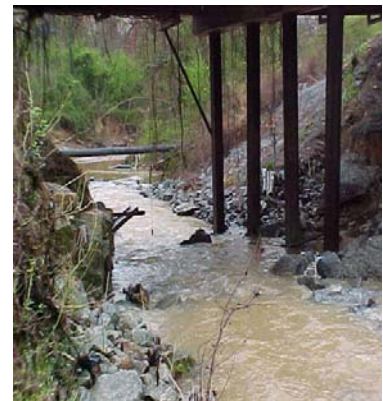
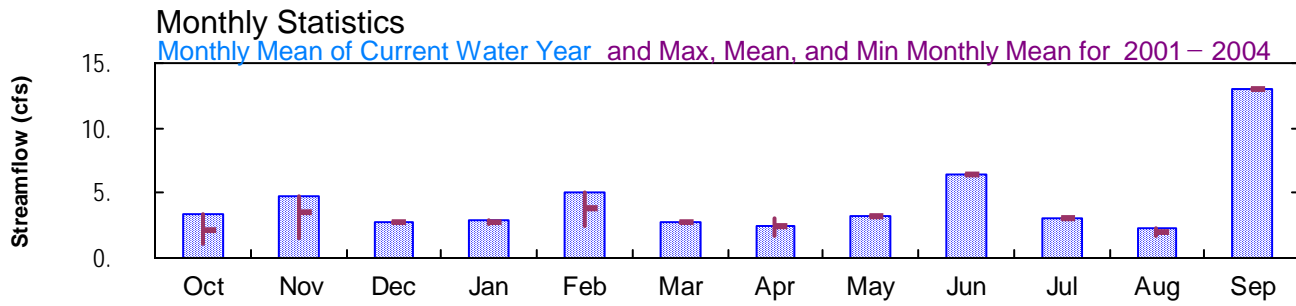
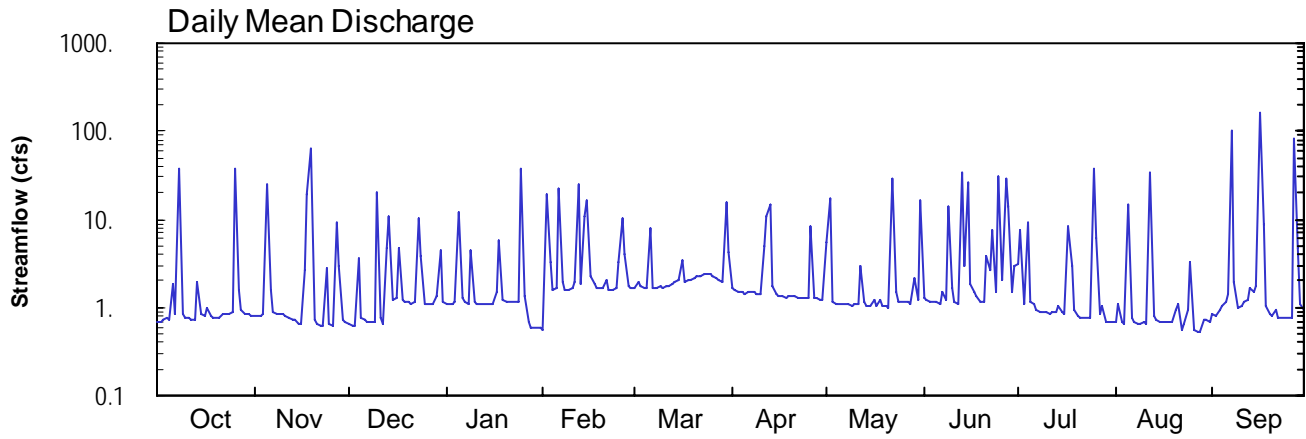
2004 Water Year  
APALACHICOLA RIVER BASIN

02336030 N.F. PEACHTREE CREEK AT GRAVES RD, NR DORAVILLE, GA

Latitude: 33° 54' 20"  
Gwinnett County

Longitude: 084° 13' 30"  
Datum: 950.00 feet

Hydrologic Unit Code: 03130001  
Drainage Area: 1.42 mi<sup>2</sup>



**APALACHICOLA RIVER BASIN  
2004 Water Year**

**02336030 NORTH FORK PEACHTREE CREEK AT GRAVES ROAD, NEAR DORAVILLE, GA**

**LOCATION.**—Lat 33°54'20", long 84°13'30" referenced to North American Datum (NAD) of 1927, Hydrologic Unit Code 03130001, Gwinnett County, at bridge at Graves Road, 0.3 miles east of Interstate 85.

**DRAINAGE AREA.**—1.42 square miles.

**COOPERATION.**— Gwinnett County Department of Public Utilities.

**WATER-DISCHARGE RECORDS**

**PERIOD OF RECORD.**—June 8, 2001 to current year

**GAGE.**—Satellite telemetry with a water-stage recorder and a continuous water-quality monitor. Datum of gage is 950.00 feet above National Geodetic Vertical Datum (NGVD) of 1929 (from topographic map).

**REMARKS.**—Records fair.

**WATER-STAGE RECORDS**

**PERIOD OF RECORD.**—June 8, 2001 to current year

**GAGE.**—Satellite telemetry with a water-stage recorder and a continuous water-quality monitor. Datum of gage is 950.00 feet above National Geodetic Vertical Datum (NGVD) of 1929 (from topographic map).

**REMARKS.**—Records good.

**EXTREMES FOR CURRENT YEAR.**—Maximum gage-height recorded, 10.22 feet, September 16; minimum gage-height recorded, 1.34 feet, August 30.

**PRECIPITATION RECORDS**

**PERIOD OF RECORD.**—June 9, 2001 to current year

**GAGE.**—Tipping-bucket raingage.

**REMARKS.**—Records good.

U.S. DEPARTMENT OF THE INTERIOR - U.S. GEOLOGICAL SURVEY - WATER RESOURCES

STATION NUMBER 02336030 N.F. PEACHTREE CREEK AT GRAVES RD, NR DORAVILLE, GA STREAM SOURCE AGENCY USGS STATE 13 COUNTY 135  
 LATITUDE 335420 LONGITUDE 0841330 NAD27 DRAINAGE AREA 1.42\* CONTRIBUTING DRAINAGE AREA DATUM 950.00 NGVD29

Discharge, cubic feet per second  
 WATER YEAR OCTOBER 2003 TO SEPTEMBER 2004  
 DAILY MEAN VALUES

DAY	OCT	NOV	DEC	JAN	FEB	MAR	APR	MAY	JUN	JUL	AUG	SEP
1	0.67	0.80	0.65	1.1	0.57	1.6	1.6	5.6	1.3	3.2	0.67	0.87
2	0.70	0.79	0.61	1.1	19	1.9	1.5	17	1.2	7.6	1.1	0.80
3	0.73	0.81	0.63	1.1	3.2	1.8	1.5	1.2	1.2	1.1	0.68	0.95
4	0.74	0.83	3.7	1.1	1.6	1.7	1.5	1.1	1.2	9.3	0.66	1.0
5	0.74	24	0.78	12	1.6	1.7	1.4	1.1	1.1	1.2	15	1.2
6	1.9	1.6	0.72	1.3	22	7.9	1.5	1.1	1.1	1.1	0.78	1.4
7	0.84	0.89	0.69	1.1	1.9	1.6	1.5	1.1	1.5	0.96	0.67	102
8	38	0.83	0.67	1.1	1.6	1.7	1.5	1.1	1.2	0.91	0.64	2.0
9	0.84	0.86	0.68	4.6	1.6	1.7	1.4	1.1	14	0.87	0.66	0.97
10	0.76	0.85	20	1.2	1.7	1.7	1.5	1.1	1.6	0.87	0.68	1.0
11	0.75	0.79	0.77	1.1	2.0	1.7	4.9	1.1	1.2	0.86	0.65	1.1
12	0.74	0.76	0.67	1.1	25	1.8	11	2.9	1.1	0.87	34	1.2
13	0.74	0.71	4.8	1.1	1.9	1.8	15	1.2	34	0.87	0.78	1.6
14	1.9	0.71	11	1.1	11	2.0	1.7	1.1	2.9	1.0	0.71	1.5
15	0.86	0.66	1.2	1.1	17	2.1	1.4	1.0	26	0.87	0.70	1.7
16	0.81	0.66	1.3	1.1	2.3	3.4	1.4	1.2	1.9	0.84	0.70	166
17	0.97	2.6	4.7	1.5	1.8	1.9	1.3	1.0	1.5	8.3	0.69	8.6
18	0.79	19	1.2	5.8	1.7	2.0	1.3	1.2	1.4	3.0	0.68	1.1
19	0.76	64	1.2	1.2	1.7	2.0	1.4	1.0	1.2	0.93	0.68	0.86
20	0.78	0.74	1.1	1.1	1.7	2.1	1.4	1.0	1.2	0.79	e0.95	0.82
21	0.77	0.64	1.1	1.1	2.1	2.3	1.3	1.0	3.8	0.78	e1.1	0.91
22	0.84	0.61	1.2	1.1	1.6	2.2	1.3	29	2.6	0.76	e0.57	0.77
23	0.85	0.62	10	1.1	1.6	2.3	1.3	1.5	7.7	0.75	e0.64	0.76
24	0.87	2.7	3.7	1.1	1.6	2.5	1.3	1.2	1.5	0.75	e0.93	0.76
25	0.88	0.66	1.1	38	3.2	2.4	1.3	1.1	31	38	e3.2	0.76
26	38	0.62	1.1	1.3	10	2.2	8.5	1.1	2.1	6.0	0.56	0.77
27	1.6	9.0	1.1	0.70	3.9	2.2	1.3	1.1	29	0.83	0.53	83
28	0.94	3.0	1.1	0.60	1.7	2.0	1.3	1.1	14	1.0	0.53	4.7
29	0.86	0.72	1.3	0.58	1.6	1.9	1.2	2.2	1.5	0.69	0.72	1.1
30	0.85	0.69	4.6	0.58	---	15	1.2	1.2	3.0	0.68	0.72	0.96
31	0.81	---	1.1	0.58	---	4.3	---	17	---	0.67	0.69	---
TOTAL	102.29	142.15	84.47	88.64	148.17	83.4	75.7	101.7	194.0	96.35	72.27	391.16
MEAN	3.30	4.74	2.72	2.86	5.11	2.69	2.52	3.28	6.47	3.11	2.33	13.0
MAX	38	64	20	38	25	15	15	29	34	38	34	166
MIN	0.67	0.61	0.61	0.58	0.57	1.6	1.2	1.0	1.1	0.67	0.53	0.76
MED	0.84	0.79	1.1	1.1	1.8	2.0	1.4	1.1	1.5	0.87	0.69	1.0
AC-FT	203	282	168	176	294	165	150	202	385	191	143	776

STATISTICS OF MONTHLY MEAN DATA FOR WATER YEARS 2001 - 2004, BY WATER YEAR (WY)

	2001	2002	2003	2004	2001	2002	2003	2004	2001	2002	2003	2004
MEAN	2.19	3.56	2.72	2.75	3.82	2.69	2.46	3.28	6.47	3.11	1.98	13.0
MAX	3.30	4.74	2.72	2.86	5.11	2.69	3.13	3.28	6.47	3.11	2.33	13.0
(WY)	2004	2004	2004	2004	2004	2004	2003	2004	2004	2004	2004	2004
MIN	1.09	1.47	2.72	2.64	2.48	2.69	1.72	3.28	6.47	3.11	1.63	13.0
(WY)	2002	2002	2004	2003	2002	2004	2002	2004	2004	2004	2001	2004

SUMMARY STATISTICS

FOR 2004 WATER YEAR

WATER YEARS 2001 - 2004

ANNUAL TOTAL	1580.30	
ANNUAL MEAN	4.32	4.32
HIGHEST ANNUAL MEAN		4.32 2004
LOWEST ANNUAL MEAN		4.32 2004
HIGHEST DAILY MEAN	166	Sep 16 2004
LOWEST DAILY MEAN	0.53	Aug 27 a 2002
ANNUAL SEVEN-DAY MINIMUM	0.66	Aug 26 2002
MAXIMUM PEAK FLOW	1290	Sep 16 2004
MAXIMUM PEAK STAGE	10.22	Sep 16 2004
ANNUAL RUNOFF (AC-FT)	3130	3130
10 PERCENT EXCEEDS	8.7	8.7
50 PERCENT EXCEEDS	1.2	1.2
90 PERCENT EXCEEDS	0.69	0.69

e Estimated  
 a Also Aug 28

U.S. DEPARTMENT OF THE INTERIOR - U.S. GEOLOGICAL SURVEY - WATER RESOURCES

STATION NUMBER 02336030 N.F. PEACHTREE CREEK AT GRAVES RD, NR DORAVILLE,GA STREAM SOURCE AGENCY USGS STATE 13 COUNTY 135  
 LATITUDE 335420 LONGITUDE 0841330 NAD27 DRAINAGE AREA 1.42\* CONTRIBUTING DRAINAGE AREA DATUM 950.00 NGVD29

Gage height, feet  
 WATER YEAR OCTOBER 2003 TO SEPTEMBER 2004  
 DAILY MEAN VALUES

DAY	OCT	NOV	DEC	JAN	FEB	MAR	APR	MAY	JUN	JUL	AUG	SEP
1	1.54	1.56	1.60	1.60	1.61	1.65	1.64	1.71	1.62	1.67	1.56	1.42
2	1.55	1.56	1.59	1.60	1.87	1.66	1.64	1.87	1.61	1.73	1.63	1.42
3	1.55	1.57	1.59	1.60	1.73	1.65	1.64	1.61	1.61	1.59	1.57	1.46
4	1.55	1.57	1.80	1.60	1.64	1.65	1.63	1.60	1.60	1.72	1.56	1.48
5	1.55	1.85	1.62	1.83	1.65	1.65	1.63	1.60	1.60	1.60	1.81	1.51
6	1.60	1.64	1.61	1.61	1.95	1.78	1.63	1.60	1.60	1.59	1.60	1.57
7	1.57	1.58	1.60	1.60	1.67	1.65	1.63	1.59	1.63	1.58	1.56	3.11
8	1.96	1.57	1.60	1.60	1.64	1.65	1.64	1.59	1.61	1.57	1.55	2.03
9	1.57	1.57	1.60	1.74	1.64	1.65	1.63	1.59	1.77	1.57	1.56	1.89
10	1.56	1.58	2.00	1.61	1.65	1.65	1.63	1.60	1.64	1.57	1.57	1.91
11	1.56	1.58	1.62	1.60	1.66	1.65	1.72	1.60	1.61	1.56	1.56	1.93
12	1.55	1.59	1.60	1.60	2.01	1.65	1.74	1.66	1.60	1.56	2.10	1.95
13	1.55	1.59	1.74	1.60	1.66	1.66	1.90	1.60	2.04	1.57	1.60	2.02
14	1.62	1.60	1.81	1.60	1.91	1.67	1.65	1.59	1.70	1.58	1.58	2.00
15	1.57	1.60	1.61	1.60	1.96	1.68	1.63	1.59	1.87	1.57	1.57	2.04
16	1.57	1.60	1.61	1.60	1.69	1.73	1.63	1.61	1.66	1.56	1.57	3.33
17	1.59	1.69	1.73	1.62	1.66	1.67	1.62	1.59	1.63	1.69	1.57	2.30
18	1.56	1.83	1.61	1.76	1.65	1.67	1.62	1.60	1.62	1.66	1.57	1.92
19	1.56	2.20	1.61	1.61	1.65	1.67	1.62	1.59	1.61	1.57	1.57	1.87
20	1.56	1.61	1.60	1.60	1.65	1.68	1.63	1.59	1.60	1.55	---	1.85
21	1.56	1.60	1.60	1.60	1.67	1.69	1.62	1.59	1.68	1.55	---	1.88
22	1.57	1.59	1.60	1.60	1.64	1.69	1.62	1.90	1.67	1.55	---	1.84
23	1.57	1.59	1.74	1.60	1.64	1.69	1.62	1.63	1.72	1.55	---	1.84
24	1.57	1.70	1.70	1.60	1.65	1.70	1.62	1.61	1.63	1.55	---	1.83
25	1.58	1.60	1.60	2.32	1.72	1.70	1.62	1.60	1.94	1.84	---	1.84
26	2.07	1.59	1.60	1.71	1.94	1.69	1.82	1.60	1.67	1.81	1.52	1.84
27	1.64	1.83	1.60	1.64	1.76	1.68	1.62	1.60	1.94	1.61	1.51	2.71
28	1.59	1.76	1.60	1.62	1.65	1.67	1.61	1.60	1.85	1.63	1.51	2.18
29	1.57	1.61	1.61	1.61	1.64	1.66	1.61	1.65	1.63	1.57	1.58	1.93
30	1.57	1.61	1.71	1.61	---	1.89	1.61	1.61	1.68	1.57	1.46	1.89
31	1.57	---	1.60	1.61	---	1.73	---	1.80	---	1.56	1.38	---
MEAN	1.60	1.65	1.65	1.65	1.72	1.68	1.65	1.63	1.69	1.61	---	1.96
MAX	2.07	2.20	2.00	2.32	2.01	1.89	1.90	1.90	2.04	1.84	---	3.33
MIN	1.54	1.56	1.59	1.60	1.61	1.65	1.61	1.59	1.60	1.55	---	1.42

U.S. DEPARTMENT OF THE INTERIOR - U.S. GEOLOGICAL SURVEY - WATER RESOURCES

STATION NUMBER 02336030 N.F. PEACHTREE CREEK AT GRAVES RD, NR DORAVILLE,GA STREAM SOURCE AGENCY USGS STATE 13 COUNTY 135  
 LATITUDE 335420 LONGITUDE 0841330 NAD27 DRAINAGE AREA 1.42\* CONTRIBUTING DRAINAGE AREA DATUM 950.00 NGVD29

Precipitation, total, inches  
 WATER YEAR OCTOBER 2003 TO SEPTEMBER 2004  
 DAILY SUM VALUES

DAY	OCT	NOV	DEC	JAN	FEB	MAR	APR	MAY	JUN	JUL	AUG	SEP
1	0.00	0.00	0.00	0.00	0.00	0.00	0.00	0.45	0.00	0.15	0.00	0.10
2	0.00	0.00	0.00	0.00	0.83	0.06	0.00	0.51	0.00	0.25	0.24	0.04
3	0.00	0.00	0.01	0.00	0.05	0.00	0.00	0.00	0.00	0.00	0.00	0.00
4	0.00	0.01	0.34	0.00	0.00	0.00	0.00	0.00	0.00	0.50	0.00	0.00
5	0.00	0.98	0.01	0.56	0.02	0.00	0.00	0.00	0.00	0.03	1.02	0.00
6	0.09	0.06	0.00	0.00	0.79	0.33	0.00	0.00	0.00	0.03	0.00	0.13
7	0.03	0.00	0.00	0.00	0.00	0.00	0.00	0.00	0.11	0.00	0.00	4.08
8	1.43	0.00	0.00	0.05	0.00	0.00	0.03	0.00	0.00	0.00	0.00	0.07
9	0.00	0.00	0.00	0.22	0.00	0.02	0.00	0.00	0.85	0.01	0.00	0.00
10	0.00	0.00	1.04	0.00	0.04	0.00	0.00	0.00	0.00	0.00	0.00	0.00
11	0.01	0.00	0.00	0.00	0.11	0.00	0.26	0.00	0.00	0.00	0.00	0.00
12	0.00	0.00	0.00	0.00	0.80	0.00	0.52	0.12	0.00	0.00	1.54	0.00
13	0.00	0.00	0.42	0.00	0.00	0.00	0.48	0.01	1.35	0.00	0.00	0.00
14	0.15	0.00	0.26	0.00	0.43	0.00	0.00	0.00	0.02	0.04	0.00	0.00
15	0.00	0.00	0.01	0.00	0.57	0.00	0.00	0.00	0.92	0.00	0.00	0.00
16	0.00	0.00	0.10	0.00	0.00	0.15	0.00	0.12	0.05	0.00	0.00	5.50
17	0.07	0.19	0.14	0.25	0.00	0.00	0.00	0.00	0.01	0.53	0.00	0.12
18	0.00	1.00	0.00	0.09	0.01	0.00	0.00	0.03	0.00	0.00	0.00	0.00
19	0.00	1.76	0.00	0.00	0.00	0.00	0.00	0.00	0.00	0.00	0.00	0.00
20	0.00	0.00	0.00	0.00	0.00	0.00	0.00	0.00	0.00	0.00	0.08	0.00
21	0.00	0.00	0.00	0.00	0.05	0.04	0.00	0.00	0.22	0.00	0.00	0.00
22	0.00	0.00	0.00	0.00	0.00	0.00	0.00	0.90	0.13	0.00	0.00	0.00
23	0.00	0.00	0.60	0.00	0.00	0.00	0.00	0.00	0.34	0.00	0.00	0.00
24	0.00	0.23	0.01	0.00	0.00	0.00	0.00	0.00	0.03	0.00	0.00	0.00
25	0.00	0.00	0.00	1.91	0.20	0.00	0.00	0.00	1.02	1.85	0.13	0.00
26	1.63	0.00	0.00	0.03	0.23	0.00	0.50	0.00	0.03	0.20	0.00	0.00
27	0.03	0.66	0.00	0.00	0.30	0.00	0.00	0.00	0.94	0.05	0.00	2.42
28	0.00	0.11	0.00	0.00	0.00	0.00	0.00	0.00	0.48	0.01	0.00	0.01
29	0.00	0.00	0.08	0.00	0.00	0.00	0.00	0.18	0.01	0.04	0.02	0.00
30	0.00	0.00	0.17	0.00	---	0.76	0.01	0.00	0.20	0.01	0.00	0.00
31	0.00	---	0.00	0.00	---	0.22	---	0.62	---	0.00	0.00	---
TOTAL	3.44	5.00	3.19	3.11	4.43	1.58	1.80	2.94	6.71	3.70	3.03	12.47