

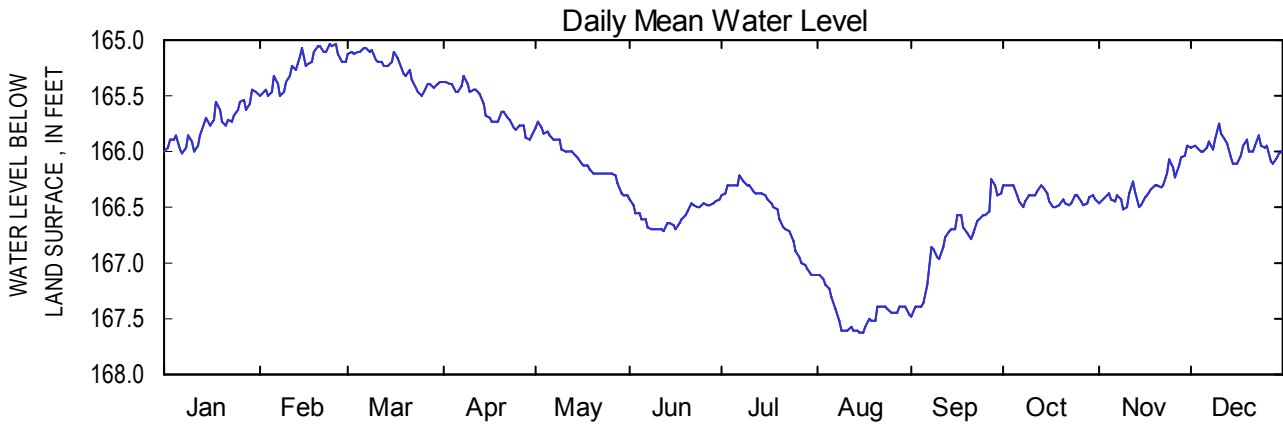


DUBLIN AQUIFER SYSTEM 2004 Calendar Year

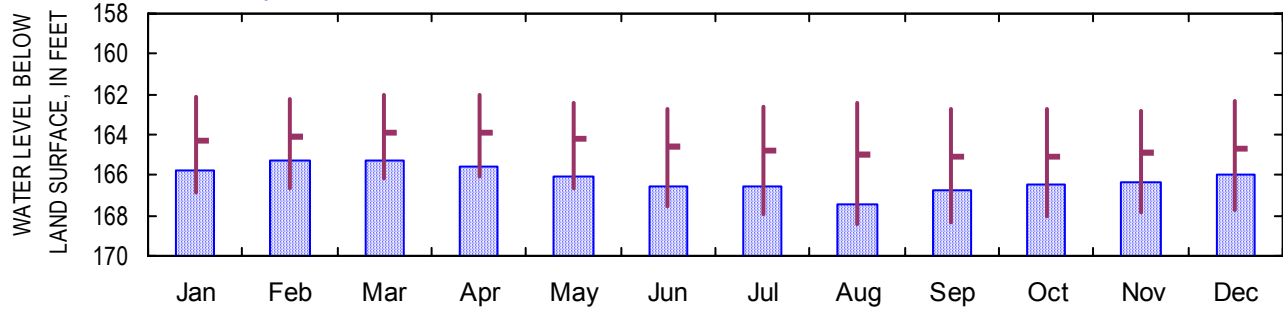
323302083263401

Site Name: 18U001

Latitude: 32° 33' 02" Longitude: 083° 26' 34" TWIGGS Period of Record: 1975 - 2004
 Well Depth: 616 feet Datum: 444.00 feet Well Diameter 3.0 inches



Monthly Mean for 2004 and Max, Mean, and Min Monthly Mean for 1975 - 2004



Monthly Water-Level Statistics

2004												
Mean	165.76	165.25	165.25	165.60	166.07	166.57	166.56	167.44	166.80	166.41	166.32	165.97
Max	166.02	165.50	165.50	165.90	166.40	166.72	167.10	167.62	167.48	166.50	166.51	166.11
Min	165.45	165.03	165.08	165.33	165.74	166.42	166.21	167.10	166.25	166.30	165.94	165.75
1975 - 2004												
Mean	164.29	164.06	163.87	163.92	164.20	164.56	164.77	164.98	165.11	165.05	164.89	164.65
Max	166.88	166.70	166.20	166.08	166.70	167.50	167.97	168.40	168.36	168.00	167.82	167.75
Min	162.17	162.25	162.06	162.00	162.46	162.76	162.60	162.40	162.70	162.70	162.78	162.34

