

**EDconnect, EDExpress &
FAA Access to CPS Online
for Foreign Schools**

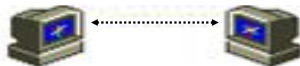


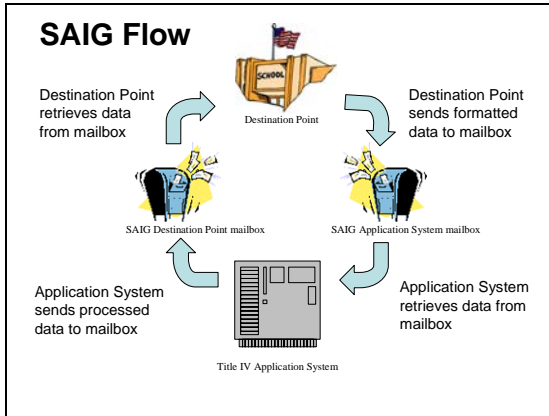
Trainers

Handouts

Topics

- Student Aid Internet Gateway (SAIG) – electronic path via which you can send, receive, & manage US Federal student aid information
- EDconnect – software that retrieves & sends information from/to the Title IV Application Systems using your SAIG electronic mailbox.
- EDExpress – software that enables schools to process, package, & manage student financial aid records electronically
- FAA Access to CPS Online – versatile online software that supports the Application, Correction, Verification, & ISIR Management processes





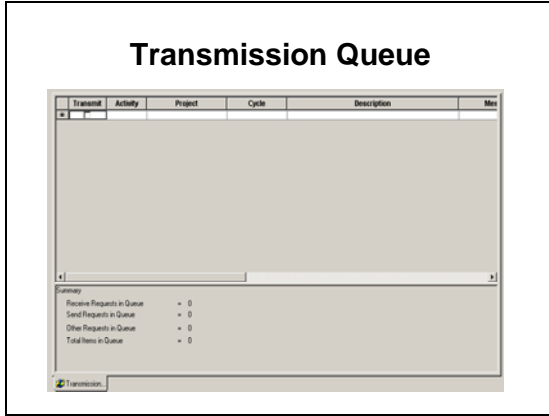
EDconnect

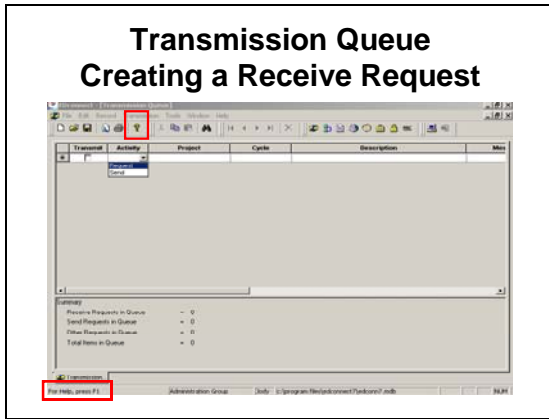
- Windows based software used to transmit Title IV data
- Current version 7.2
- Requires a connection to the Internet
- Download software and documentation

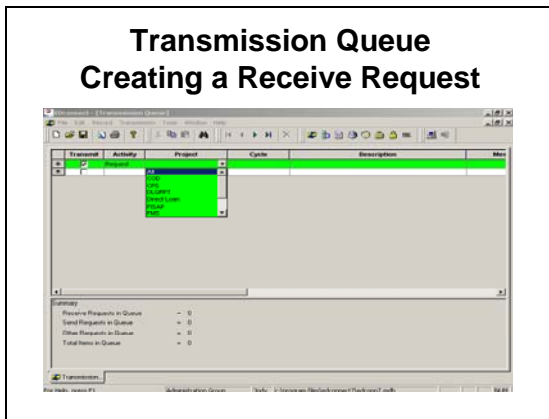
<http://fsadownload.ed.gov/softedconnect.htm>

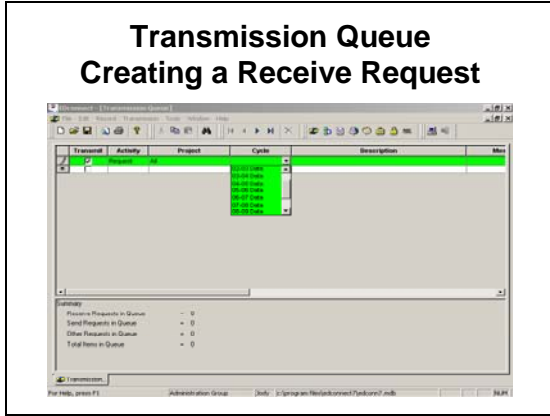
Log in Screen

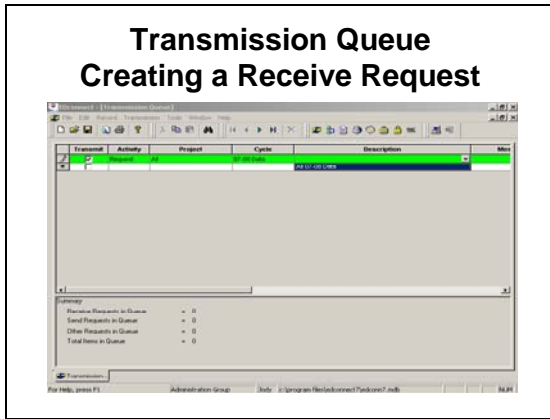
The screenshot shows a 'Log in' dialog box with the following fields: 'User ID' (containing 'Jody'), 'Password' (with a masked input field), and 'Group ID' (containing 'Administration Group'). There are 'OK', 'Cancel', and 'Help' buttons at the bottom.

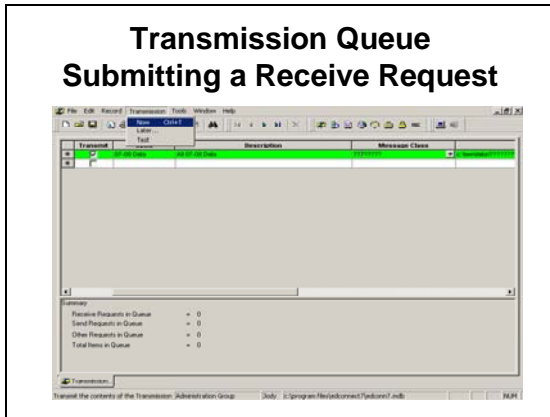




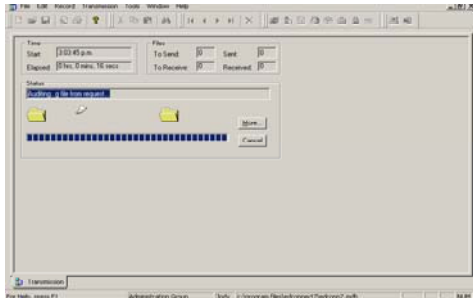




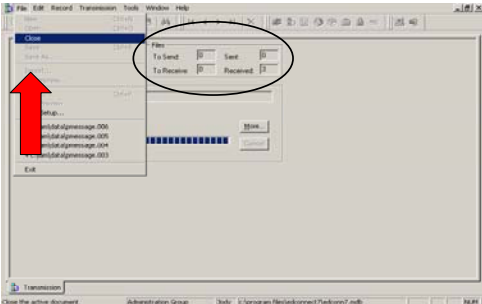




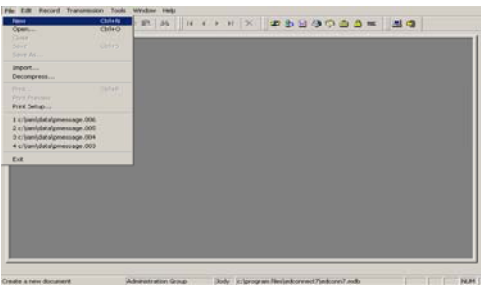
Transmission Queue Submitting Receive Request



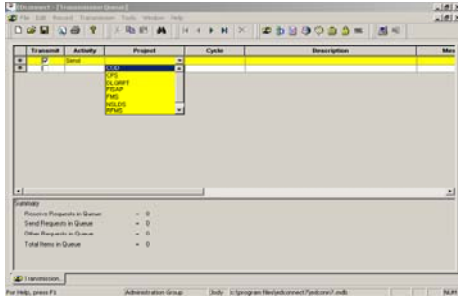
Transmission Queue End Transmission



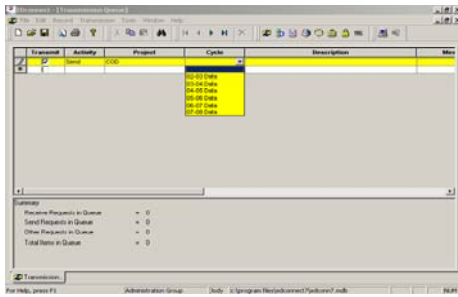
From the Transmission Queue to the Activity Log



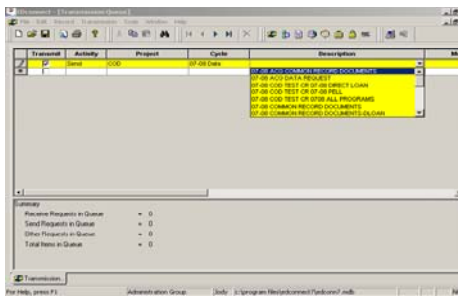
Transmission Queue Creating a Send Request



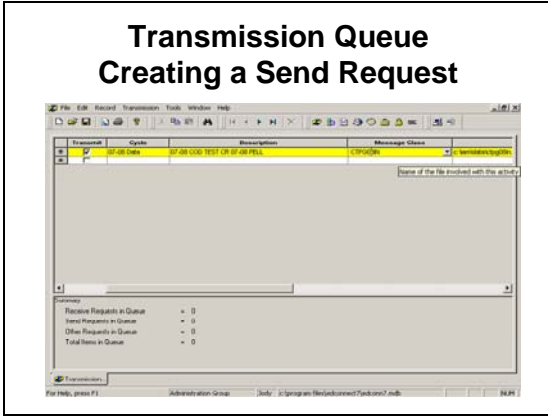
Transmission Queue Creating a Send Request



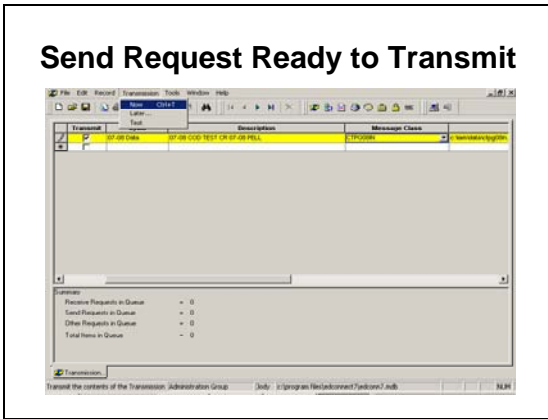
Transmission Queue Creating a Send Request



Transmission Queue Creating a Send Request

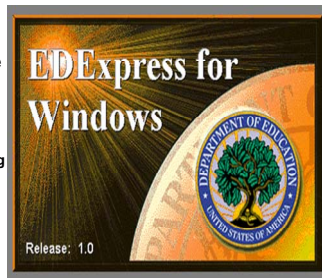


Send Request Ready to Transmit



EDEExpress

- Windows based software used to create & manage database of student records
- Current version 08-09
- Release 1.0 contains
 - Application Processing
 - Packaging
- Download software & documentation

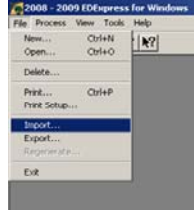


www.fsadownload.ed.gov

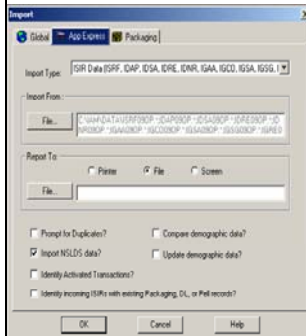
Importing ISIRs into EDEExpress

- ISIRs available for import within three business days of entering FAFSA or correction
- Must import ISIRs into EDEExpress to view in EDEExpress

1. Select **File/Import/App Express**



Importing ISIRs



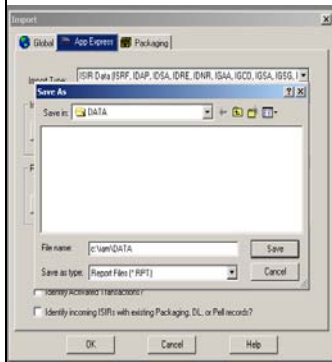
2. Confirm "ISIR Data" appears in "Import Type" field

Importing ISIRS

3. Click **File** button in "Import From" section of screen & select file to import
4. Click **Open**



Importing ISIRs



5. Choose report destination: File, Printer, or Screen
- If you choose File, click **File** button & type name for the file, then click **Save**
6. Click **OK** to import file
7. Click **OK** to close In Progress dialog box

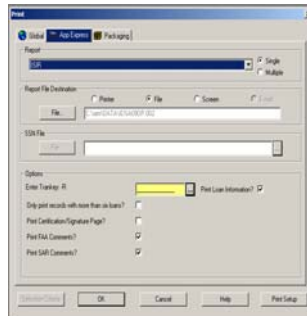
ISIR Import ID

- Identifier created at time file imports
- Use the identifier to print all student records in individual file
- Identifier prints on Import Records Edit Report
- 14 characters in format
CCYYMMDDHHMMSS
20090101120000
January 1, 2009, at exactly 12:00 noon

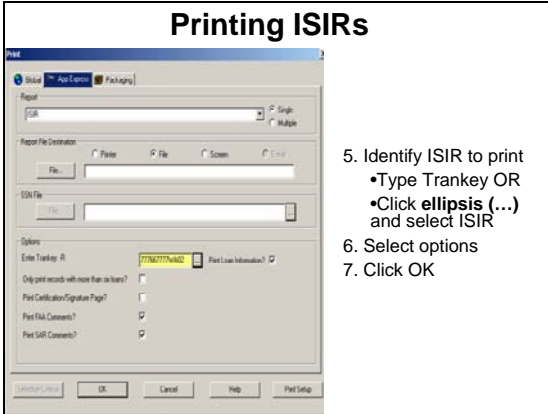
Printing ISIRs

- Print single or multiple ISIRs after they're imported into EExpress

- To print single ISIR
1. Select **File/Print/App Express**
 2. Confirm "ISIR" is Report Type
 3. Select **Single Report**
 4. Choose report destination: Printer, File, or Screen

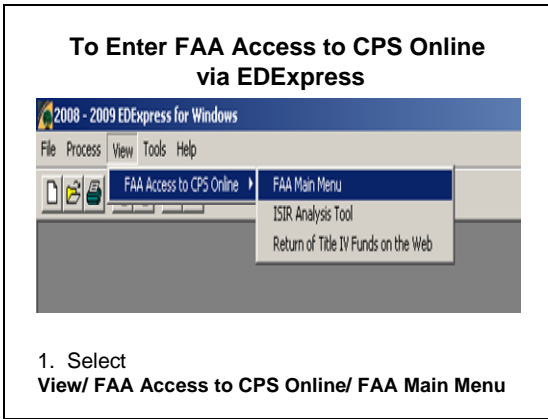


Printing ISIRs



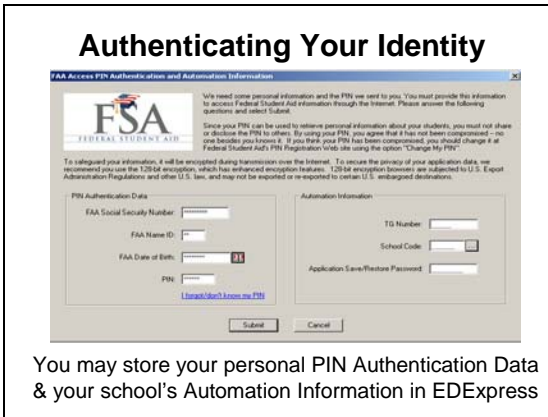
5. Identify ISIR to print
 - Type Trankey OR
 - Click **ellipsis (...)** and select ISIR
6. Select options
7. Click OK

To Enter FAA Access to CPS Online via EExpress



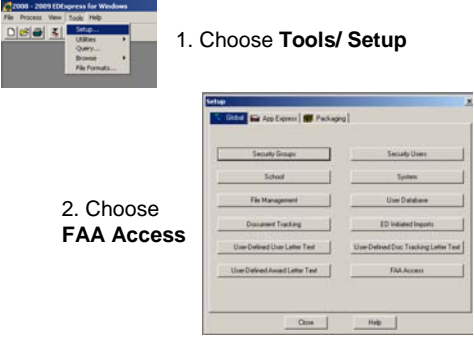
1. Select View/ FAA Access to CPS Online/ FAA Main Menu

Authenticating Your Identity



You may store your personal PIN Authentication Data & your school's Automation Information in EExpress


Storing Your Personal Identifiers



1. Choose **Tools/ Setup**

2. Choose **FAA Access**

Storing Your Personal Identifiers



3. Input all identifiers, except your PIN

Enter FAA Access Using the URL

FAA must

- Have a TG number identifying your school mailbox
- Have a PIN identifying an individual
- Be enrolled as a authorized user in the Student Aid Internet Gateway

fafsa.ed.gov/FOTWebApp/faa/faa.jsp

You may use FAA Access to

- Enter a FAFSA or Renewal FAFSA
- Correct a processed FAFSA
- Continue working on saved FAFSA or Correction
- Submit a signature flag for application in signature hold status
- View students' SAR information
- Request ISIR data
- Compare two ISIR transactions for same student
- Review verification data with Verification Tool
- Analyze ISIR data to improve verification process
- Calculate and manage the return of Title IV funds

Welcome to FAA Access to CPS Online

<http://www.fafsa.ed.gov/FOTWebApp/faa/faa.jsp>

Enter Personal Identification Data

Site Last updated: Thursday, January 3, 2008
Privacy

Another Training for Foreign Schools

**National Student Loan
Data System**

- Checking eligibility
- Enrollment reporting
- Transfer student monitoring

Thank you!