

**EPA's Plug-In To eCycling
Partners help give consumers
more opportunities to eCycle.**

Apple



cingular

DELL



JVC
The Perfect Experience

LEXMARK

NEC
NEC Display Solutions



rethink

Office
DEPOT

Panasonic

PHILIPS

SAMSUNG

SHARP

SONY

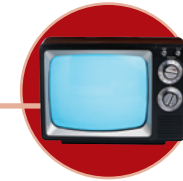
STAPLES
that was easy.

TOSHIBA

EPA does not endorse any commercial services or products of its Plug-In partners.

What Can Be eCycled:

- Personal Computers
- Hard drives
- Monitors
- Keyboards
- Printers
- Televisions
- DVD Players
- VCRs
- Cell Phones
- Pagers
- Digital Equipment
- Scanners
- Cell Phone Accessories
- MP3 players
- And much more...



Please check with your local recycling department to see what you can recycle in your area.



Plug-In To eCycling
with U.S. EPA



United States
Environmental Protection Agency
(5305W)
Washington, DC 20460

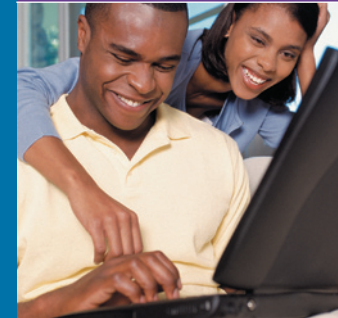
Official Business
Penalty for Private Use \$300

EPA530-F-07-001
January 2007
www.epa.gov/plugin

♻️ Recycled/Recyclable—Printed with Vegetable Oil Based Inks on 100% Postconsumer, Process Chlorine Free Recycled Paper.

Donate or Recycle Electronics

eCycle!



Protect your environment.
Help others access technology.



www.epa.gov/plugin

Clean out your clutter, help others access technology, and protect your environment. Donate or recycle your used electronics today: **eCycle them!**

Americans routinely replace their electronics every few years. What do you do when you are ready to upgrade your computer, TV or cell phone? You probably paid a lot for it when you bought it and don't feel right about throwing it away. Most people put used products into storage or into the trash because they don't know what else to do.

If Americans donated or recycled all their used electronics, we would prevent 2 million tons from ending up in the trash each year. That amount would fill enough 18-wheelers to stretch from Chicago to Los Angeles.

What You Can Do

Donate for Reuse

Contact local charities or refurbishers to find out where to bring your used electronics and what age and type of equipment they accept.

Can't Donate? Recycle!

Contact your local recycling center to find out about community programs or collection events.

Check with manufacturers and retailers for ways to eCycle at www.epa.gov/plugin

Plug In To eCycling partners offer the following options:

- **Online Take-back/Trade-in Programs.** Visit Dell, HP, Apple, Sony, Toshiba, and NEC Display's websites to eCycle your computer equipment. 
- **In-store Take-back/Trade-in Programs.** Visit Best Buy, Staples, Cingular and Office Depot to eCycle your cell phone. Staples and Best Buy also hold periodic in-store collection days for larger consumer electronics. 
- **Community Recycling Events.** Check your local listings for local recycling events supported by Intel, NEC Display, Panasonic, Sharp, Sony, JVC, Toshiba, Lexmark, Philips, Dell, and HP. 

eBay's Rethink partnership provides eCycling options and information at rethink.ebay.com.



Protect Your Surroundings

Safely recycling outdated electronics promotes sound management of hazardous components such as lead and mercury.



Help Others

Donating your used electronics benefits your community by passing on ready-to-use or refurbished equipment to those who need it.



Conserve Natural Resources

eCycling recovers valuable materials from old electronics which can be used to make new products. As a result, we reduce pollution and save natural resources by extracting less raw materials from the earth.



Create Jobs

eCycling creates jobs for professional recyclers and refurbishers and creates new markets for the valuable components that are dismantled.



For more information on how and where to eCycle, visit: www.epa.gov/plugin