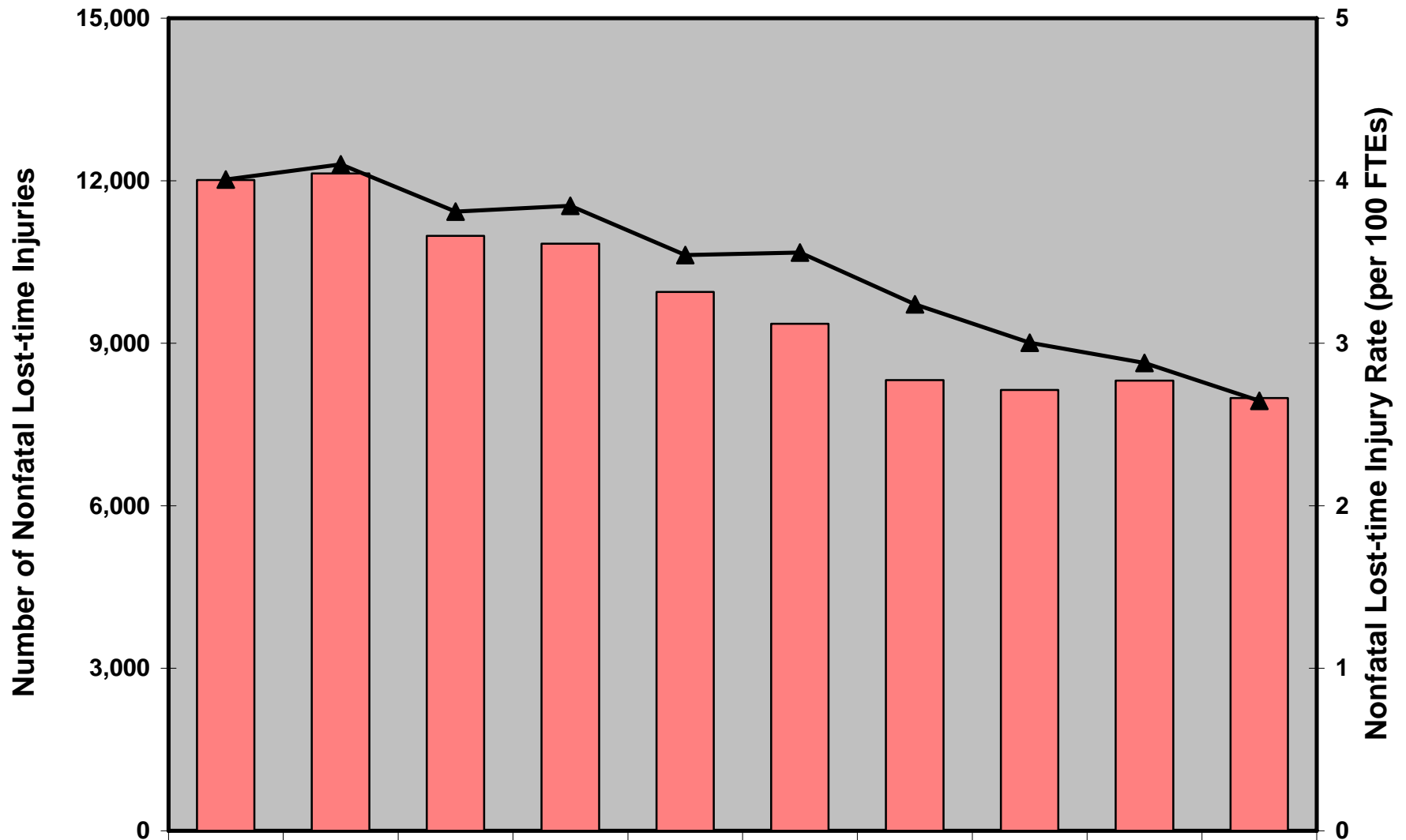


Number and Rate of Mining Nonfatal Lost-time Injuries by Year, 1997-2006

(Excludes Office Employees, Data Source: MSHA)



	1997	1998	1999	2000	2001	2002	2003	2004	2005	2006
Injuries	12,010	12,132	10,984	10,839	9,949	9,358	8,322	8,139	8,310	7,988
Injury Rate	4.0	4.1	3.8	3.8	3.5	3.6	3.2	3.0	2.9	2.6

