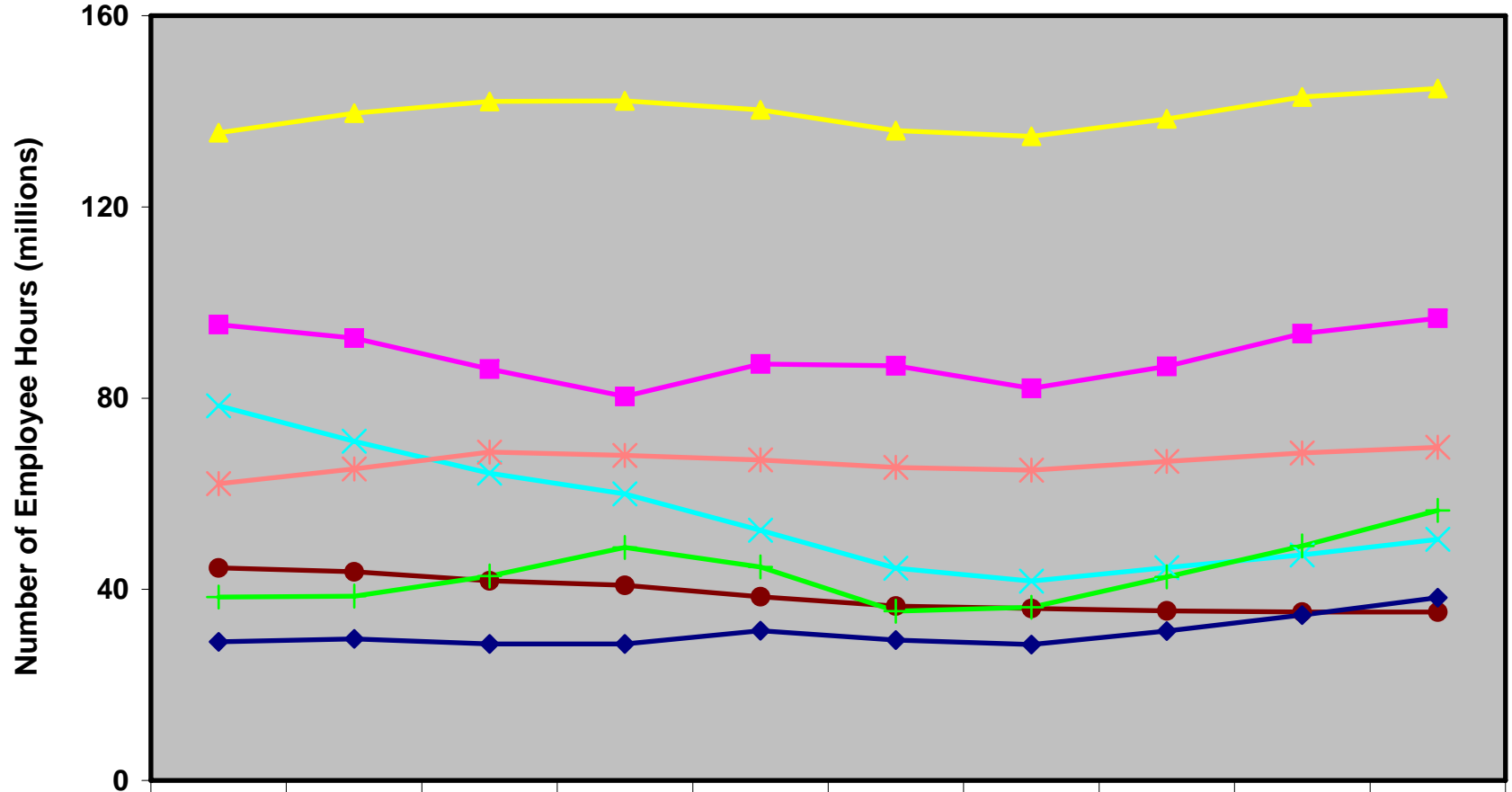


Number of Surface Employee Hours Reported by Mine Operators and Independent Contractors by Commodity and Year, 1997-2006

(Excludes Office Employees; Data Source: MSHA)



	1997	1998	1999	2000	2001	2002	2003	2004	2005	2006
Coal Operator	95.4	92.5	86.0	80.3	87.2	86.8	82.1	86.6	93.5	96.7
Metal Operator	78.4	71.0	64.3	60.0	52.4	44.4	41.7	44.6	47.2	50.4
Nonmetal Operator	44.5	43.6	41.8	40.9	38.4	36.5	36.0	35.5	35.2	35.2
Stone Operator	135.5	139.6	142.0	142.2	140.3	136.0	134.8	138.4	143.0	144.8
Sand & Gravel Operator	62.1	65.2	68.7	68.0	67.1	65.5	65.0	66.7	68.5	69.7
Coal Contractor	29.0	29.6	28.6	28.5	31.4	29.4	28.4	31.3	34.6	38.3
Noncoal Contractor	38.4	38.5	42.8	48.7	44.7	35.4	36.3	42.6	49.1	56.5