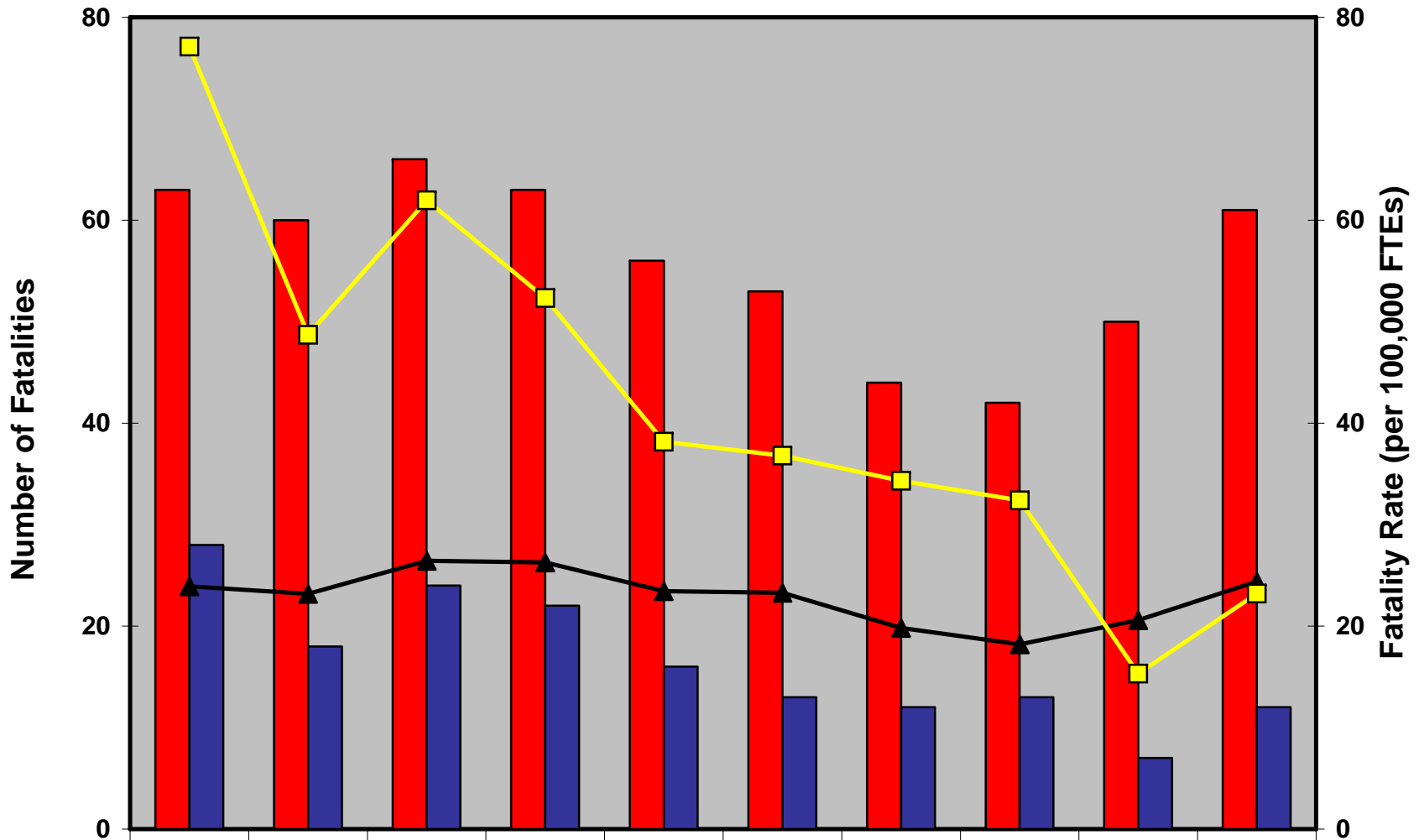


Number and Rate of Mining Fatalities by Operator or Independent Contractor by Year, 1997-2006

(Excludes Office Employees, Data Source: MSHA)



	1997	1998	1999	2000	2001	2002	2003	2004	2005	2006
■ Operator	63	60	66	63	56	53	44	42	50	61
■ Contractor	28	18	24	22	16	13	12	13	7	12
▲ Operator Rate	23.9	23.2	26.4	26.3	23.4	23.3	19.8	18.2	20.6	24.4
■ Contractor Rate	77.1	48.7	62.0	52.3	38.2	36.8	34.3	32.4	15.3	23.2