

Publicly Available Archive Holdings for ETM+, ASTER, MODIS

February 3, 2003

Richard McKinney
LP DAAC Operations Manager
605.594.6505
mckinney@usgs.gov

ETM+ Available Archived Data

Year	Granules	Volume
◆ Calendar Year 2000	53,343	43.002 terabytes
◆ Calendar Year 2001	53,769	48.252 terabytes
◆ Calendar Year 2002	56,226	50.651 terabytes
◆ Calendar Year 2003	4,957	4.438 terabytes

ASTER Available Archived Data

Year	Granules	Volume
◆ Calendar Year 2000	183,498	13.800 terabytes
◆ Calendar Year 2001	514,753	41.302 terabytes
◆ Calendar Year 2002	518,225	36.551 terabytes
◆ Calendar Year 2003	58,935	4.856 terabytes

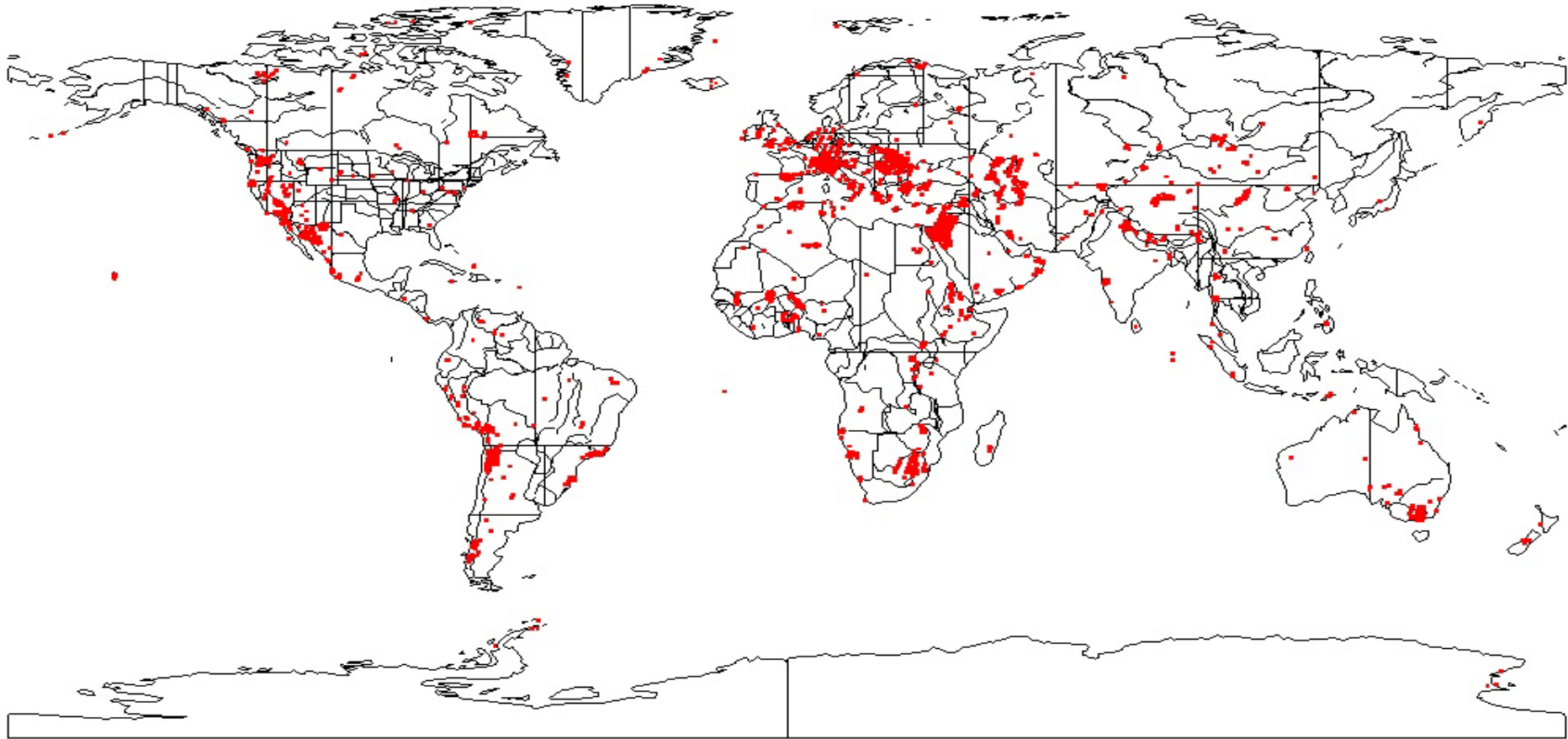
ASTER DEM History

- Released products to the public in March 2001
- Upgraded to two NT workstations
- Developed training class in coordination with America View
- Continue to train additional staff
- Developed poster sessions at various conferences
- Written papers on DEM generation from ASTER
- Currently use PCI software to generate DEMs
- Provide GeoTiff and HDF formats upon request
- Only archive HDF format
- Currently 1928 DEMs available to the public.



ASTER DEMs Available to the Public

ASTER DEMs Available through January 29th, 2003 (1928)



MODIS Available Archived Data

Year	Granules	Volume
◆ Calendar Year 2000	256,675	19.265 terabytes
◆ Calendar Year 2001	1,341,720	101.043 terabytes
◆ Calendar Year 2002	2,462,594	178.023 terabytes
◆ Calendar Year 2003	578,360	44.595 terabytes

