



U.S. Geological Survey

Center for Earth Resources Observation and Science (EROS)

Land Processes DAAC User Working Group

Chris Doescher, PMP
Special Assistant to the Director

U.S. Department of the Interior
U.S. Geological Survey

“Project EROS”

“...the time is now right and urgent to apply space technology towards the solution of many pressing natural resource problems being compounded by population and industrial growth.”

Secretary of the Interior
Stewart L. Udall –1966



Earth Resources Observation and Science



Data Archives:

To safeguard and expand the national archive of remotely sensed land data

Data Acquisition/Access:

To ensure that scientists, businesses, decision makers and the public have ready access to land information

Science:

To promote applications, knowledge and use of land information to better understand our planet



Earth Resources Observation and Science



2004 aerial imagery

Instrument Suite:

AERONET: Aerosol Robotic network

SCAN: Soil Climate Analysis Network - USDA

ANSS: Advanced National Seismic Station - USGS

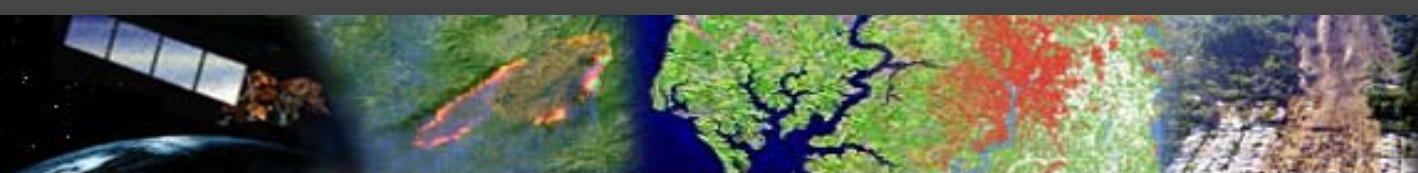
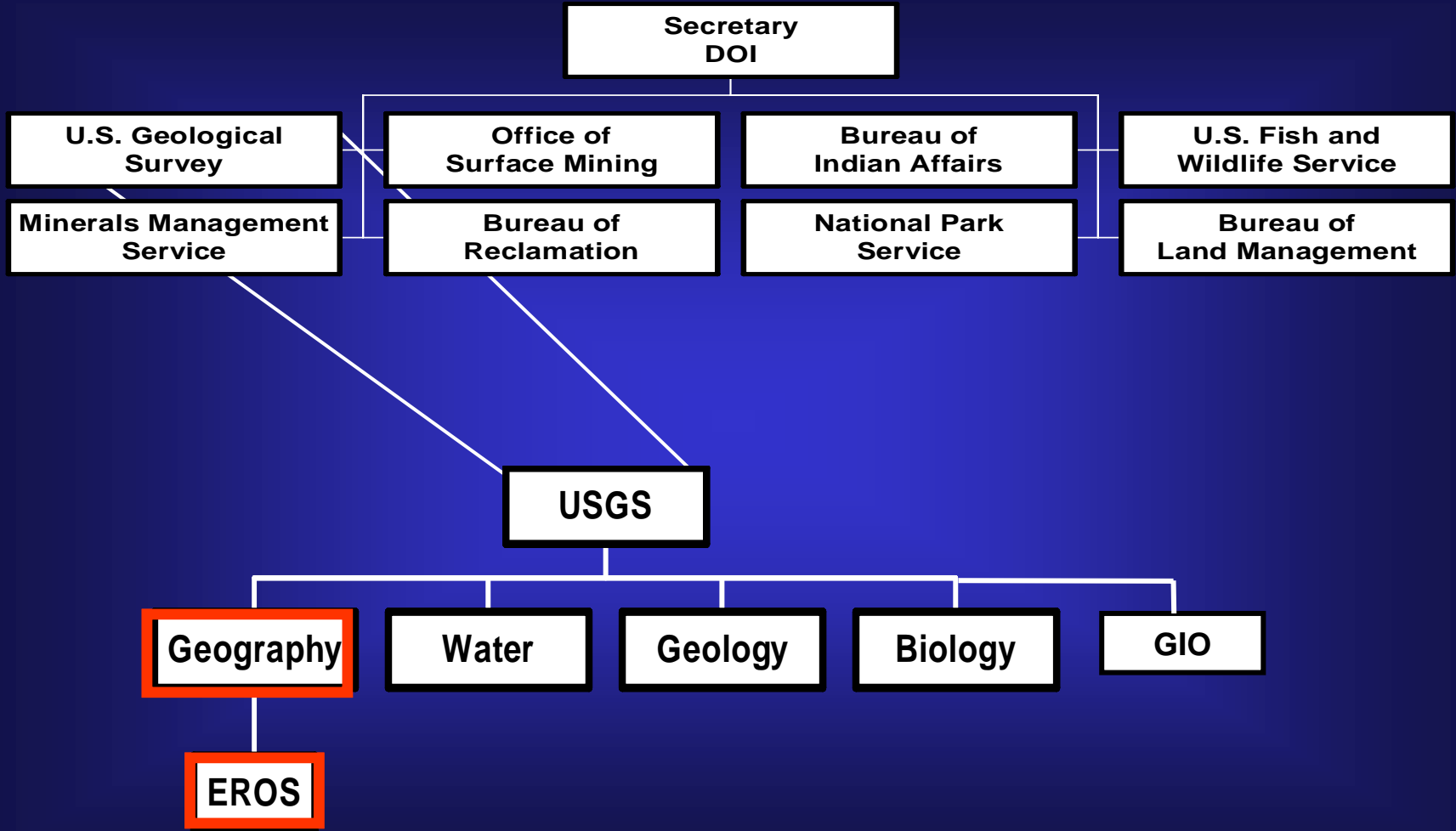
CORS/GSOS: Constantly Operating Reference Station / GPS Surface Observing System

RCS: Reference Climate Station – Canada – Future Site

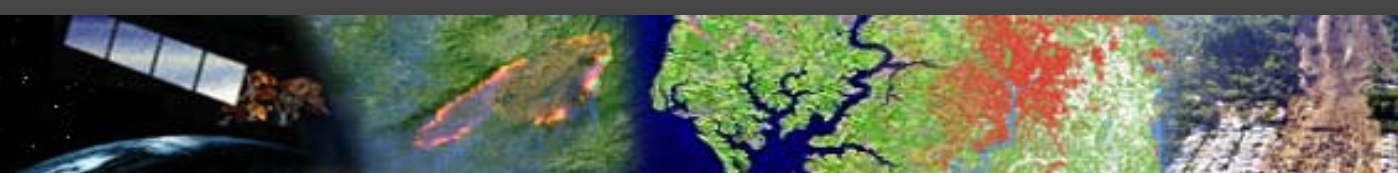
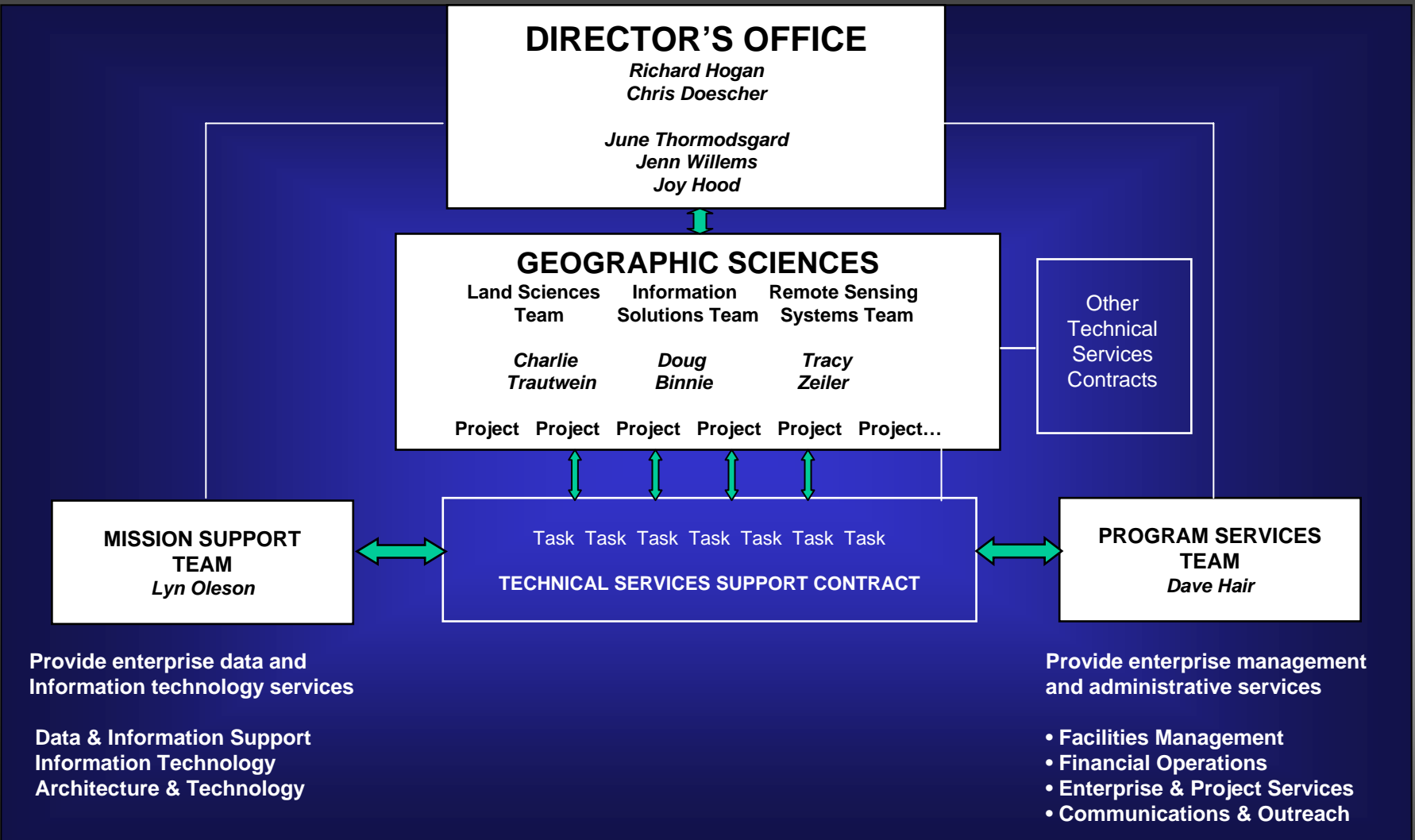
CRN: US Climate Reference Network

SURFRAD: Surface Radiation Network

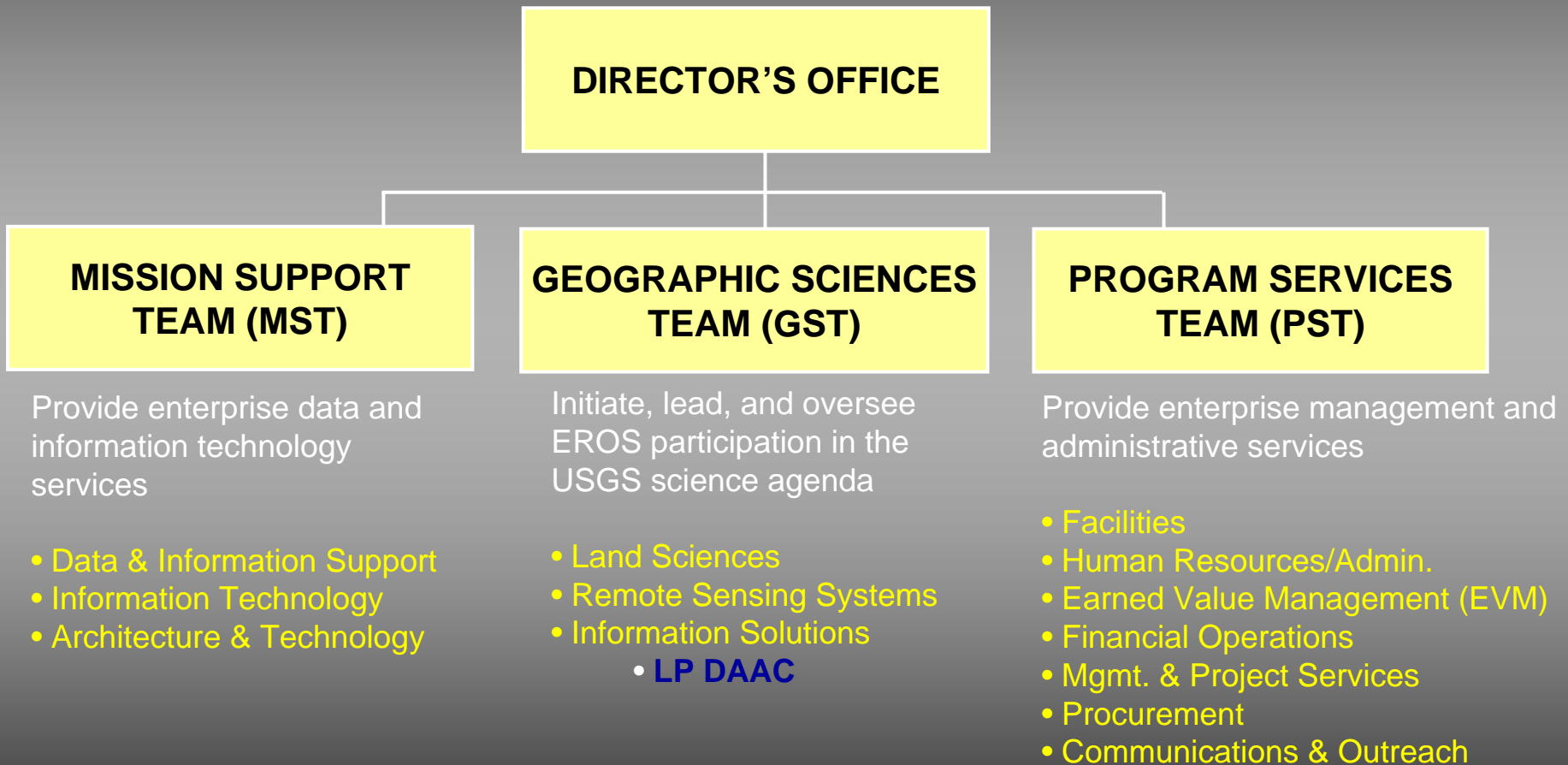
EROS Organizational Alignment



EROS Management Framework



EROS Government Organization



Contract Workforce Supporting USGS

Support Contractors

- **7 Contract Firms Supporting South Dakota Operations**
 - SAIC (407): science and operations-home base in California
 - SGT (77): information technology-home base in Maryland
 - Tri-Star (9): logistics management-home base in Indiana
 - DCT (18): facility maintenance-home base in Oklahoma
 - Pleasant Valley (8): custodial services-home base in South Dakota
 - ATA (10): facility/personnel security-home base in Colorado
 - ATA (11): Financial management-home base in Colorado
- **2 Contract Firms Supporting Satellite Operations**
 - Honeywell (50): Landsat 5 and 7 mission operations-home base in Maryland
 - Aerospace (4): Satellite systems engineering-home base in California

Partnerships

Government Programs



A topographic map of North America, showing terrain elevation with colors ranging from green (low) to brown and white (high). The Great Lakes and Mississippi River are prominent. The word "Questions?" is overlaid in large, bold, yellow font with a black drop shadow.

Questions?