










Update on ASTER Status

2007 Senior Review



-  Terra proposal submitted in March for FY08, FY09
-  Presentation before Senior Review Panel end of April
-  Results announced in July
-  Terra and ASTER approved for 2 more years of extended mission
-  Basic mission budget approved for 2 years
-  Budget approved for FY10, FY11 dependent on 2009 Senior Review
-  Enhanced mission proposal ideas rejected except for 1 new MOPITT product



 Previous team was 18 scientists

 2006 ROSES Call:







➤ 8 of 16 team members who proposed were selected for funding last week

➤ Four additional funded proposals use ASTER data

 ASTER Science Team will be selected by NASA HQ

 Next ASTER Science Team meeting in US December 3-7



-  Detector temperature increasing since launch
-  Mid-2006 increase determined to be exponential
-  Increased T causes SWIR detectors to start saturating high DN values
-  Mid-May 2007, Stirling Cycle cooler was re-cycled to increase piston stroke
-  T instability developed. SWIR turned off, then restarted next day at old setting. 3K reduction achieved, but T continues to rise
-  Another re-cycling planned for September

ASTER Global DEM (GDEM)



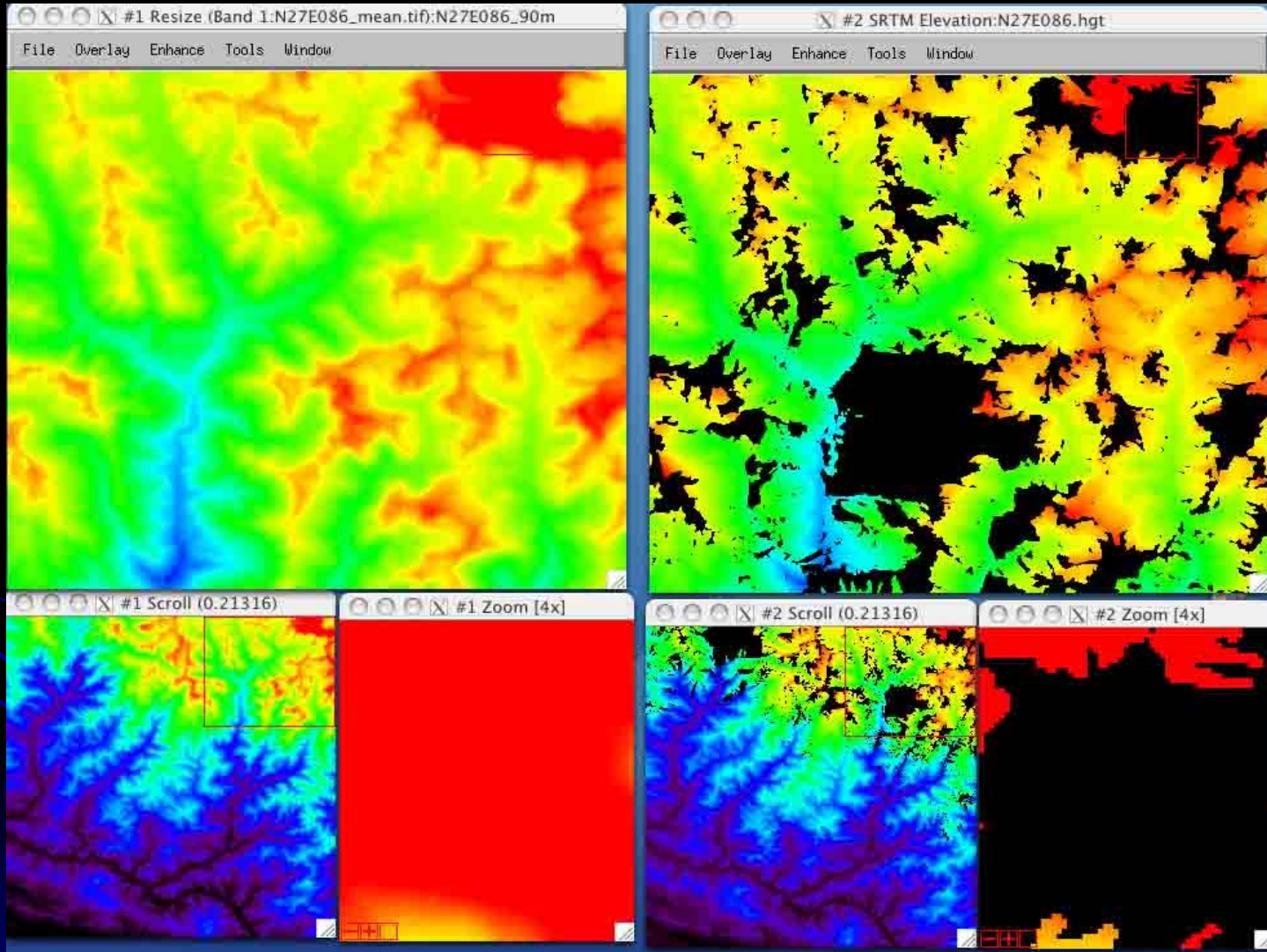
-  Proposed by Japanese commercial company to AST at team meeting in December 2006
-  SILC would process all 1,500,000 ASTER images, then composite them to 23,500 1x1 degree tiles
-  Up to 300 scenes used for each tile
-  GDEM has 30m postings, ~10m vertical accuracy
-  Delivery of Global DEM in 18-24 months
-  NASA and ERSDAC will share cost
-  Contracts with SILC are being negotiated, money is in place

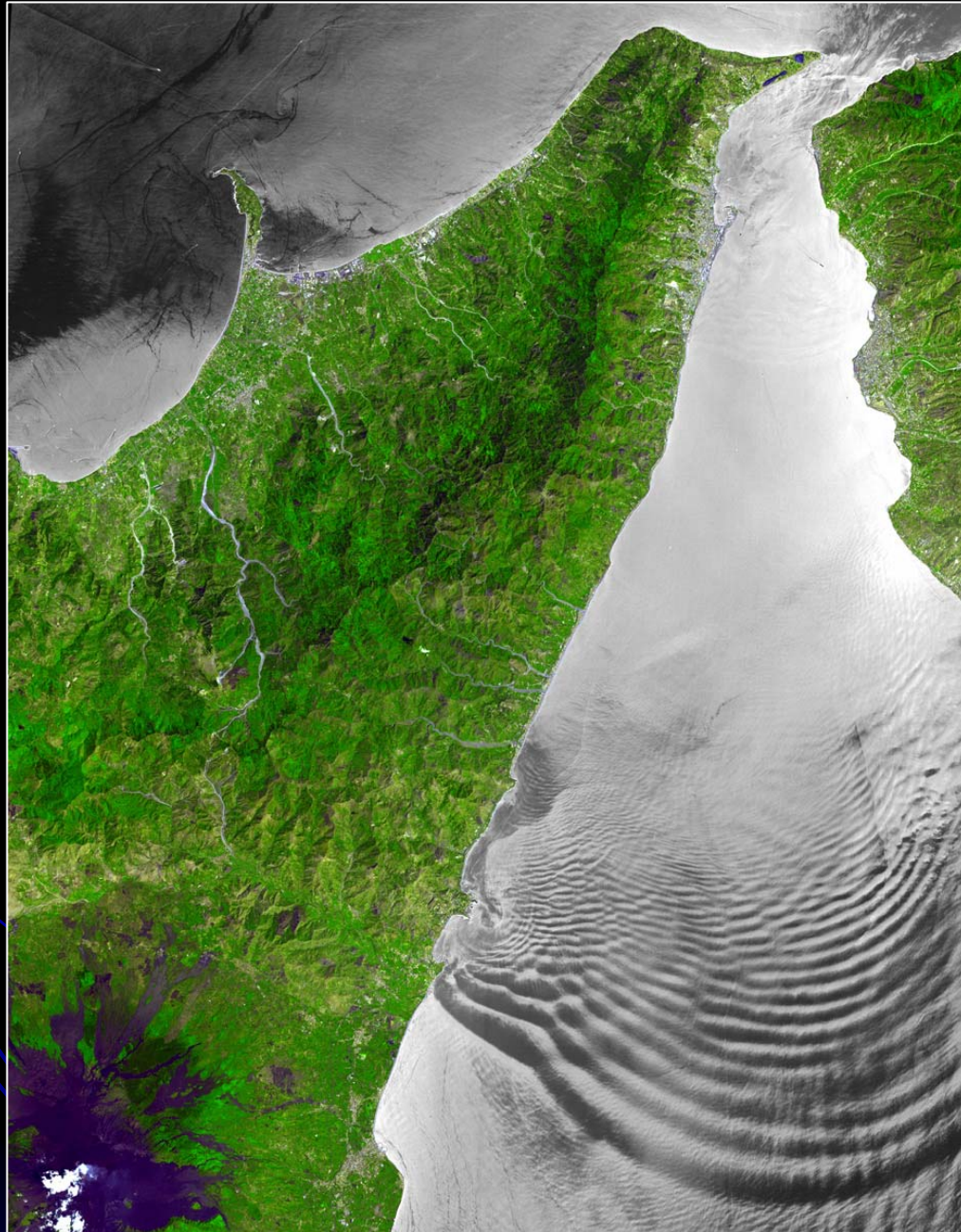
Sample GDEM Tile: MT. EVEREST



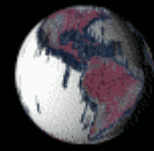
ASTER

SRTM





Palm and World Islands, DUBAI





Anyone need help ordering ASTER data?