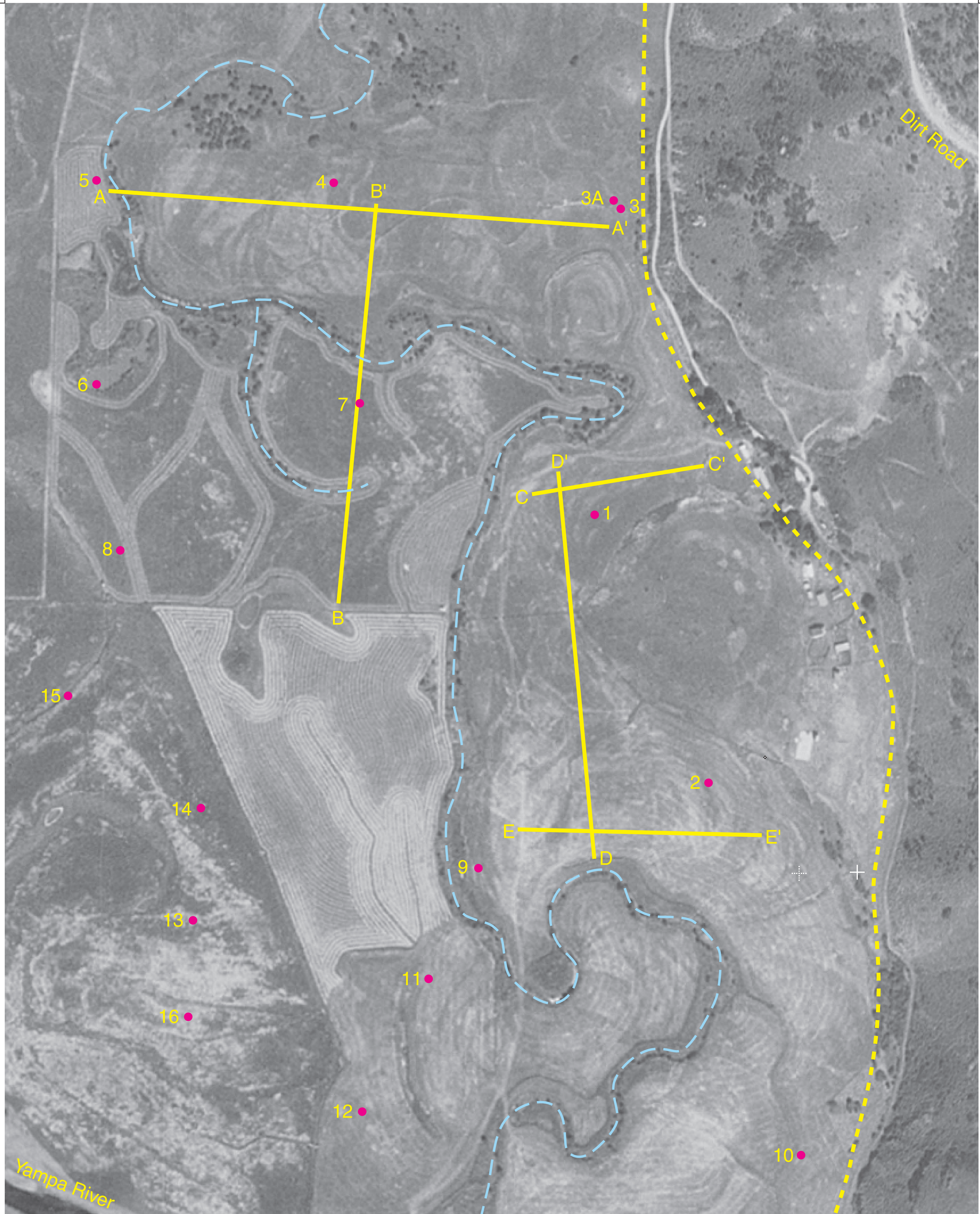


345381
4471722

346246
4471722



4470655
345381

4470655
346246

Explanation	
	Approximate location of drill hole and its number
	Location of cross section and associated seismic line
	Approximate location of eastern edge of alluvium
	Abandoned stream channel

1. The geology near the field site is shown on figure 1.
2. The locations of the drill holes are approximate. The logs from the drill holes are shown on plate 2.
3. The cross sections are shown on plate 3.

100 m

Universal Transverse Mercator grid
Zone 13 North
1983 North American Datum

Aerial Photograph of Field Site
by
Karl J. Ellefsen, Gary J. Tuttle,
Jackie M. Williams, Jeffrey E. Lucius
2005

Any use of trade, product, or firm names is for descriptive purposes only and does not imply endorsement by the U.S. Government.