

**Figure 2a.**  
Petray and Rathburn mine and Bear Valley sample locations.  
(Slotton et al. 2004)

- Mine tailings
- Water/sediment
- Water/biota
- Drainage
- Fence

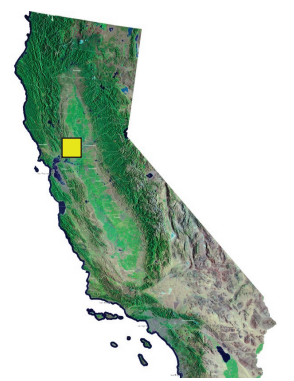


500 m

Numbers surrounded by a triangle denote photographs provided in Appendix 1.

For total mercury, numbers in parentheses indicate the concentration in the <0.45 µm fraction.

All solid-phase total mercury (Hg<sub>T</sub>) and methyl mercury (MeHg) results are presented on a dry-weight basis.





**Figure 2b.**  
 Petray and Rathburn mine and Bear Valley sample locations.  
 (Slotton et al. 2004)

- Mine tailings
- Water/sediment
- Water/biota
- Drainage
- Fence

N

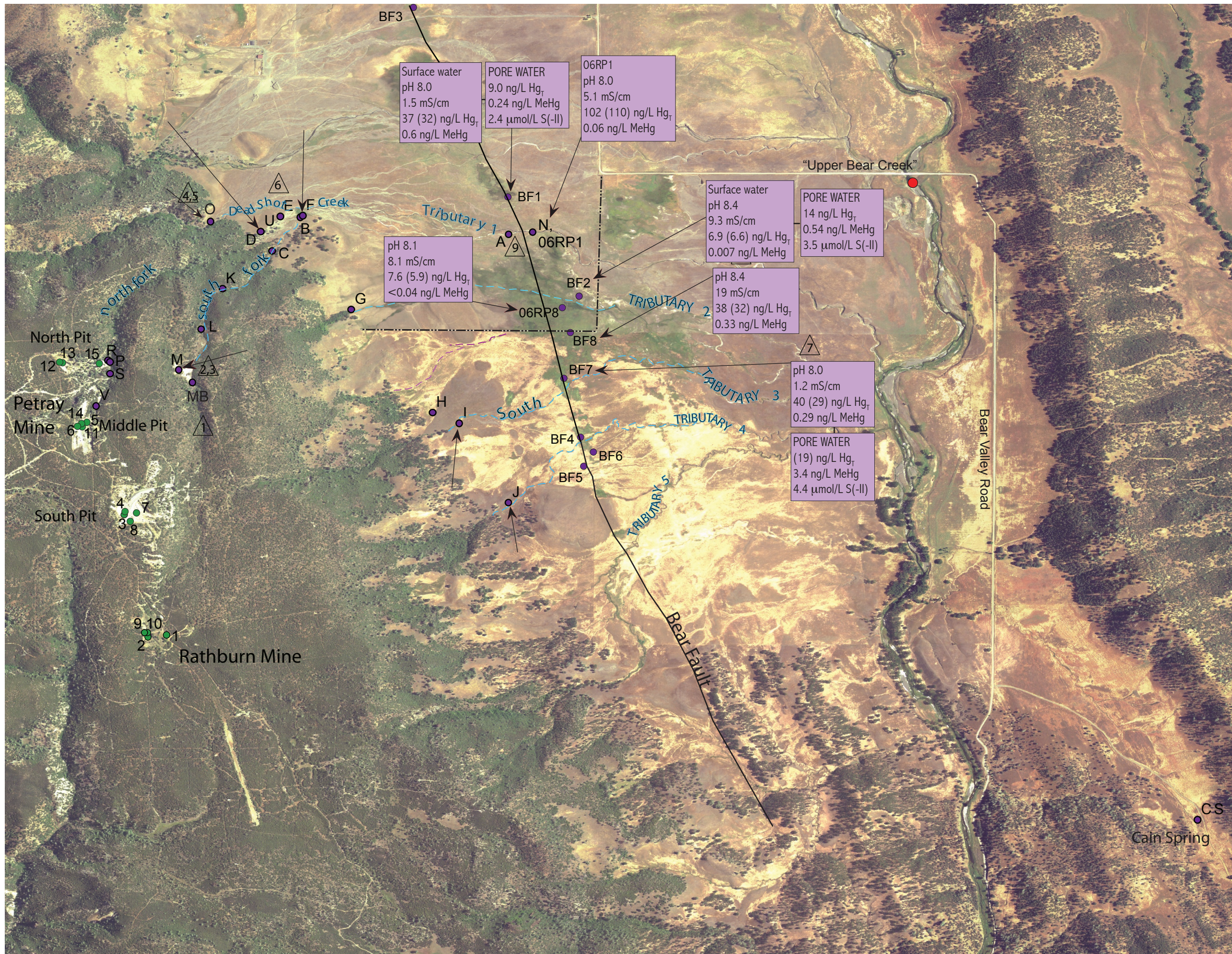
500 m

Numbers surrounded by a triangle denote photographs provided in Appendix 1.

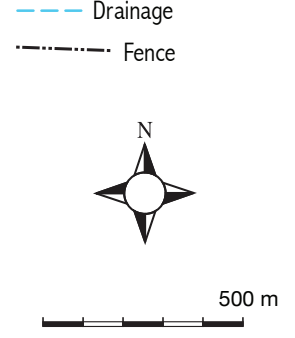
For total mercury, numbers in parentheses indicate the concentration in the <0.45 μm fraction.

All solid-phase total mercury (Hg<sub>T</sub>) and methyl mercury (MeHg) results are presented on a dry-weight basis.





**Figure 2c.**  
 Petray and Rathburn mine and Bear Valley sample locations.  
 (Slotton et al. 2004)



Numbers surrounded by a triangle denote photographs provided in Appendix 1.

For total mercury, numbers in parentheses indicate the concentration in the <0.45 μm fraction.

All solid-phase total mercury (Hg<sub>T</sub>) and methyl mercury (MeHg) results are presented on a dry-weight basis.

