

- LIST OF MAP UNITS**
- QUATERNARY AND TERTIARY SURFICIAL DEPOSITS**
- Qfp Flood-plain deposits (Holocene)
 - Qaf Alluvial and fluvial deposits (Holocene)
 - Qc Colluvium (Holocene)
 - Qfy Young alluvial fan deposits (Holocene)
 - Qls Landslide deposits (Holocene)
 - Qsl Solifluction deposits (Holocene)
 - Qd Debris flow deposits (Holocene)
 - Qt Terrace deposits (Holocene and Pleistocene?)
 - Qfo Old alluvial fan deposits (Holocene and Pleistocene?)
 - Qm Glacial moraine deposits (Holocene and Pleistocene?)
- TERTIARY SEDIMENTARY ROCKS**
- Tg Gravel-rich terrace deposits (post-Paleocene)
- TERTIARY IGNEOUS ROCKS**
- Tb Basalt dikes (Eocene?)
 - Trd Rhyolite dikes (Tertiary)
 - Tr Rhyolite (Paleocene)
- CRETACEOUS IGNEOUS ROCKS**
- Kpeg Pegmatitic dikes (Late Cretaceous?)
 - Kg Biotite granite (Late Cretaceous?)
 - Kqfp Quartz-feldspar porphyry (Late Cretaceous)
 - Kgtd Granitoid dikes and plugs (Early Cretaceous)
 - Kdl Diorite dikes (Early Cretaceous)
 - Kbm Black Mountain intrusion (Early Cretaceous)
 - Goodpaster batholith (Early Cretaceous)
 - Kgb Main intrusive phase
 - Kgbf Early intrusive phase
 - Kgmh Granitic rocks of Mount Harper batholith (Early Cretaceous)
 - Kgtc Granite of Tibbs Creek (Early Cretaceous)
 - Kgbr Granodiorite of Brink intrusion (Early Cretaceous)
- PALEOZOIC AND OLDER METAMORPHIC UNITS**
- Dag Augen gneiss of Central Creek (Late and Middle Devonian)
 - Dog Biotite orthogneiss (Late and Middle Devonian)
 - Pam Amphibolite gneiss (Late Devonian and older)
 - Pqt Quartzite and metapelite (pre-Late Devonian)
 - Pgn Biotite-sillimanite gneiss (pre-Middle Devonian)
 - Pg Biotite gneiss (pre-Late Devonian)
- CONTACTS AND STRUCTURES**
- Contact—Dashed where inferred; dotted where concealed; queried where uncertain
 - Fault—Bar and ball on downthrown side where relative movement known. Dashed where inferred; dotted where concealed
 - Strike-slip fault—Dashed where inferred; dotted where concealed. In cross section, T indicates motion toward viewer; A, motion away from viewer
 - Thrust fault—Dotted where concealed
 - Antiform—Dotted where concealed
 - Synform—Dashed where inferred; dotted where concealed
 - Lineament—From analysis of aerial photographs
 - Shear zone
 - Minor fold—Showing strike and dip
 - Lineation—Showing strike and dip. May be combined with foliation symbols
 - Inclined
 - Horizontal
 - Foliation—Showing strike and dip. May be combined with lineation symbols
 - Inclined
 - Horizontal
 - Vertical
 - Joint—Showing strike and dip
 - Sample locality for U-Pb SHRIMP age date—See table 1
 - Placer mine or prospect—See table 2
 - Lode mine or prospect—See table 2

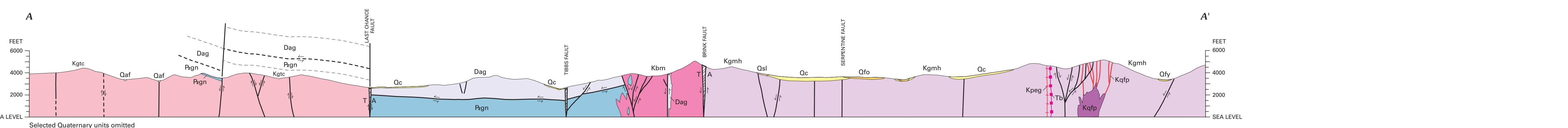
Base from U.S. Geological Survey, 1958. Universal Transverse Mercator projection, 1927 North American Datum, 10,000-foot grid based on Alaska coordinate system, zone 3, 1,000-meter Universal Transverse Mercator grid ticks, zone 6.

SCALE 1:63 360

CONTOUR INTERVAL 100 FEET

NATIONAL GEODETIC VERTICAL DATUM OF 1929

QUADRANGLE LOCATION



GEOLOGIC MAP OF THE BIG DELTA B-1 QUADRANGLE, EAST-CENTRAL ALASKA

By
 Warren C. Day, J. Michael O'Neill, John N. Aleinikoff,
 Gregory N. Green, Richard W. Saltus, and Larry P. Gough
 2007