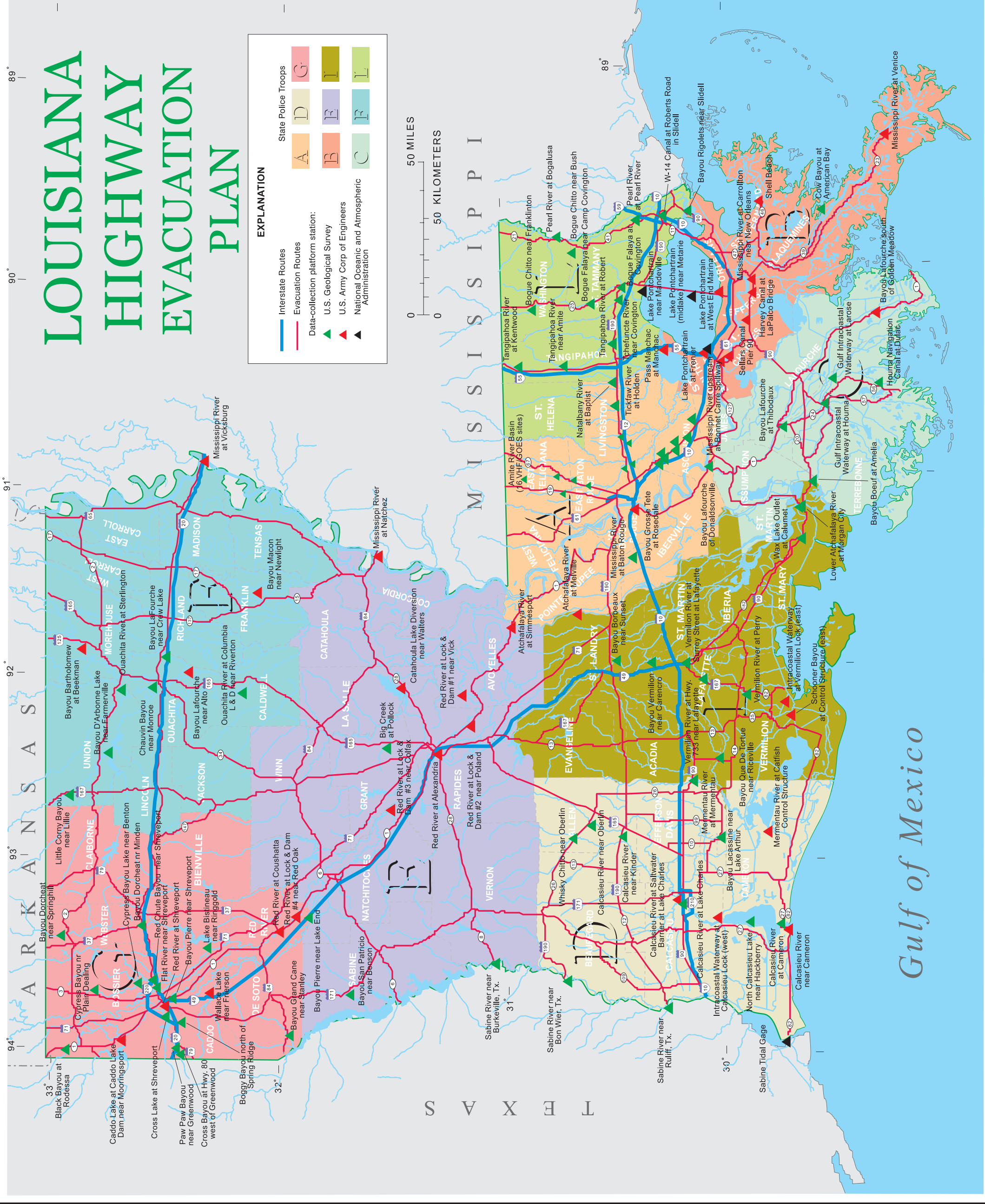


LOUISIANA HIGHWAY EVACUATION PLAN



EXPLANATION

- Interstate Routes
- Evacuation Routes
- Data-collection platform station:
- U.S. Geological Survey
- U.S. Army Corp of Engineers
- National Oceanic and Atmospheric Administration

State Police Troops

- A
- B
- C
- D
- E
- F
- G
- H
- I
- J
- K
- L



FOR MORE INFORMATION

If you would like more information about one of the following agencies, please call or e-mail the individuals named:

- U.S. Geological Survey
Charles R. Demas, District Chief
dc_la@usgs.gov (225) 389-0281
- Louisiana Emergency Response Commission
Lieutenant Colonel Mark S. Oxley
moxley@dps.state.la.us (225) 925-6424
- Louisiana Office of Emergency Preparedness
Colonel Mike Brown
mbrown@loep.state.la.us (225) 342-5470
- Louisiana State Police
Major Joseph Booth
jbooth@dps.state.la.us (225) 925-6113 Ext. 213
- National Weather Service
Paul Trotter
paul.trotter@noaa.gov (504) 649-0357
- Lower MS River Forecast Center
Dave Reed
dave.reed@noaa.gov
- Louisiana Department of Transportation and Development
Office of Planning & Programming
http://www.dotd.state.la.us (225) 274-4127

For evacuation information during an **Emergency**, call 1 800 469-4828

Published by
Louisiana State Police
Louisiana Highway Evacuation Plan
Map 01-1

Prepared in cooperation with the following agencies:



Map prepared by
U.S. Geological Survey
USGS
science for a changing world
U.S. Department of the Interior
U.S. Geological Survey

Gulf of Mexico