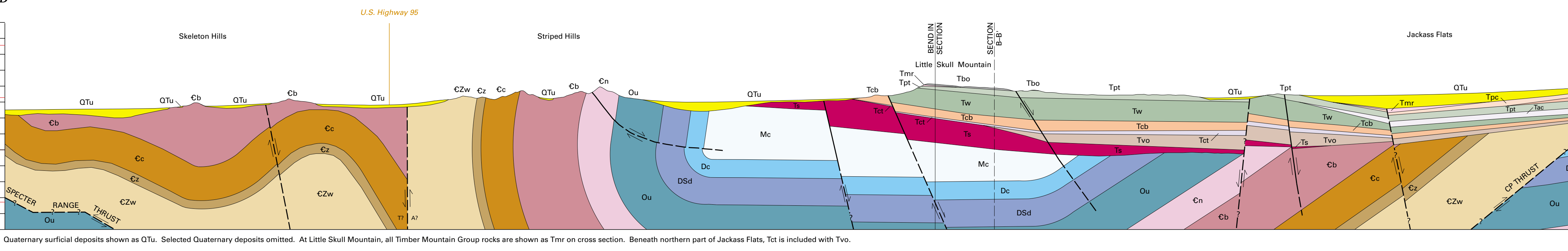
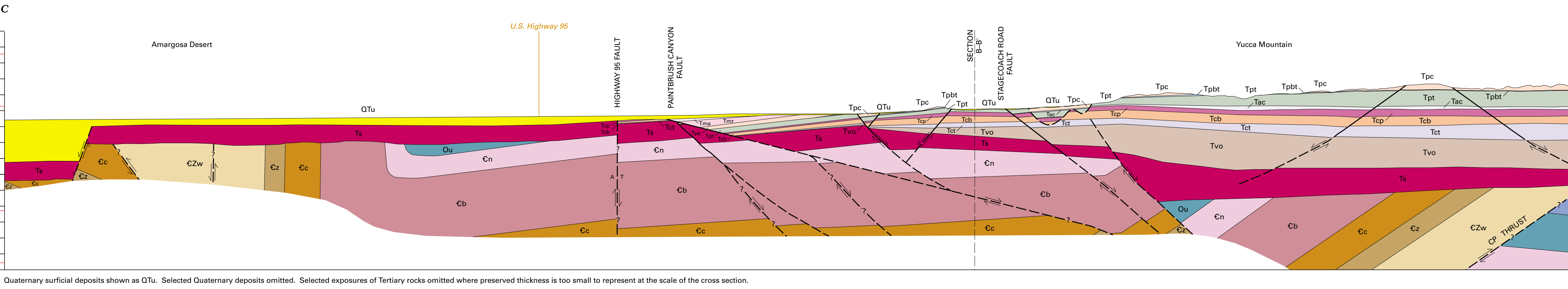
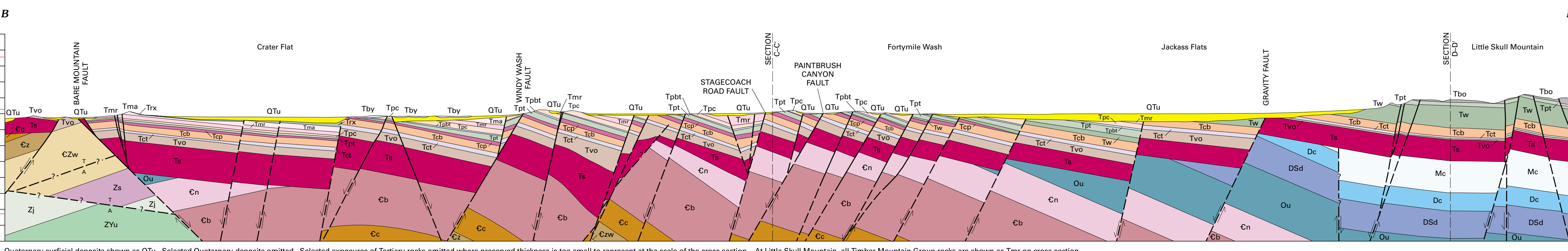
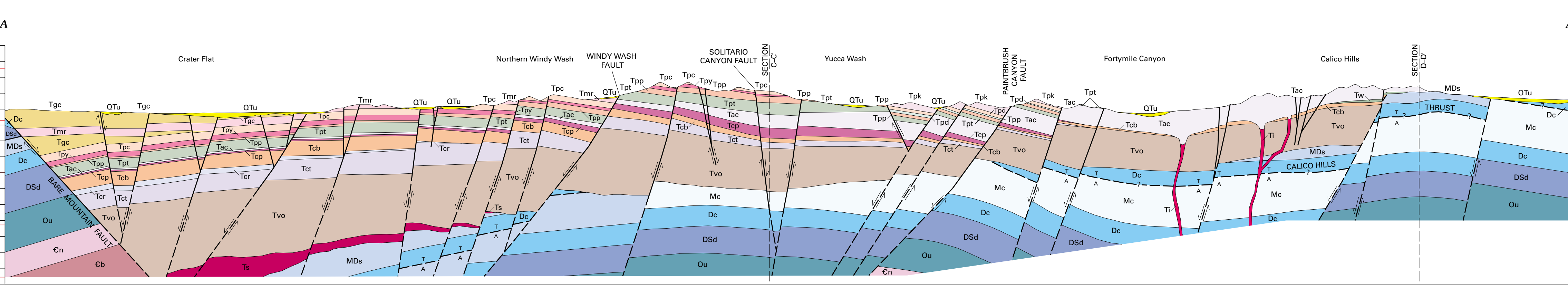


Map modified from U.S. Geological Survey (USGS) 1:50,000, Amargosa Valley, Antero, Shoshone Mountains, Big Dunes, Buster Basin, Corona Canyon, Crater Flat, East of Buster Mountain, Jackass Flats, Little Skull Mountain, Skeleton Hills, South of Amargosa Valley, Striped Hills, Toposh Spring, Toposh Spring Tuff. 10,000-foot grid ticks based on Nevada coordinate system, PPS zone 2702 1927 North American datum.



GEOLOGIC MAP OF THE NEVADA MOUNTAIN REGION, NYE COUNTY, NEVADA

By Christopher J. Potter¹, Robert P. Dickerson², Donald S. Sweetkind¹, Ronald M. Drake II¹, Emily M. Taylor¹, Christopher J. Fridrich¹, Carma A. San Juan¹, and Warren C. Day¹ 2002

¹U.S. Geological Survey, 75 M. Shuler Corp.

Any use of trade names in this publication is for descriptive purposes only and does not imply endorsement by the U.S. Geological Survey. For use by the U.S. Geological Survey Information Services, the U.S. Geological Survey, or other agencies, contact the U.S. Geological Survey, Reston, Virginia 20192. Aerial coverage and a PDF of this map are available at <http://www.gutenberg.gov/geology/geology.htm>

3359 12 473 7878 2