



Visualizing Topography Show





1a - Rampart Ridge

Rampart Ridge southeast side, view from Longmire

Photo 1a



Map 1a





1b - Mount Rainier

View from Rampart Ridge north side

Photo 1b



Map 1b





2 - Nisqually River

View from highway bridge looking down valley

Photo 2



Map 2

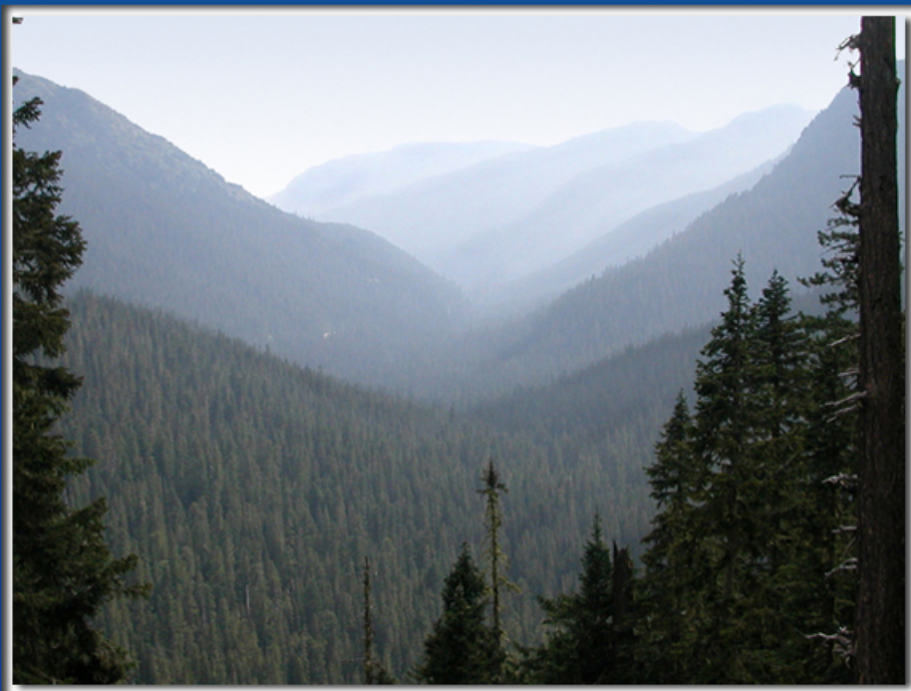




3 - Chinook Creek

View from 2km (1.2m) upvalley of highway 123 tunnel

Photo 3



Map 3





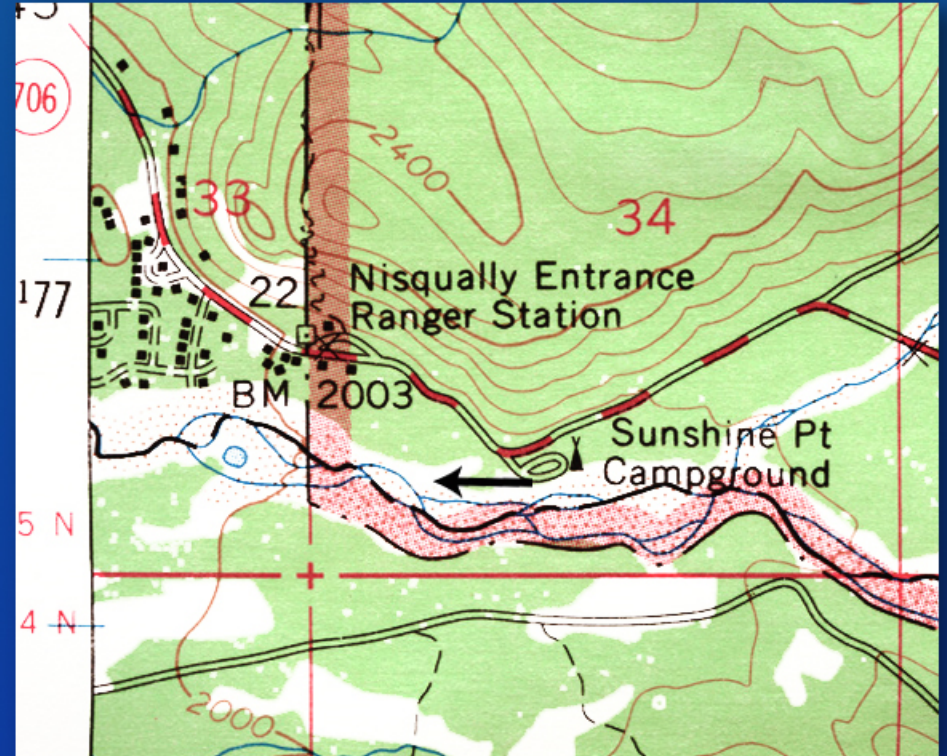
4 - Nisqually River (near SW Park Boundary)

View adjacent to Sunshine Point Campground Restrooms

Photo 4



Map 4





5 - Pinnacle Peak

View from the south side of Jackson Visitor Center

Photo 5



Map 5





6 - Snow Lake and Unicorn Peak

View from Snow Lake Campground

Photo 6



Map 6





7 - Nisqually Glacier

View from Nisqually Vista trail viewpoint

Photo 7



Map 7

