

An aerial photograph of a wetland or estuary, showing various colored zones in shades of green, blue, and brown, likely representing different land cover types or water levels. The text is overlaid on this image.

Habitat Suitability and Restoration Potential in Estuaries: Integrating Monitoring and Land Cover Data Using EMAP Probabilistic Survey Methods

Lisa M. Smith

**8th Environmental Monitoring and
Assessment Program (EMAP) Symposium**

Washington, DC

April 11, 2007



What's the problem?

Many ecologically and economically important fish and shellfish species are dependent upon estuarine habitats during some life stage, BUT...

Very few numeric water quality criteria are in place to protect aquatic life use in estuaries, SO...

How do we avoid “death by a thousand cuts” when habitat loss and alterations are concerned?



We can assess estuarine habitats at multiple scales...

- to estimate habitat suitability for estuarine populations;
- to evaluate “death by a thousand cuts;”
- and to target restoration for specific habitat types.

Estuarine Habitat Assessment Recipe...

You will need (tools):

- 1 Habitat Suitability Index (HSI) Model
- 1 State-level probabilistic survey design for estuaries



Ingredients (Data):

WQ and sediment characteristic data from a probabilistic survey (EMAP-NCA)

<i>DO</i>	<i>Salinity</i>	<i>Grain Size</i>
<i>Temperature</i>	<i>pH</i>	<i>Sediment TOC</i>

Land Cover Data (NWI)

<i>Open water</i>	<i>grassy wetlands</i>
<i>SAV</i>	<i>sandy shoreline</i>

Stir (calculate)

Use WQ, sediment, and LC data to calculate HSI values.

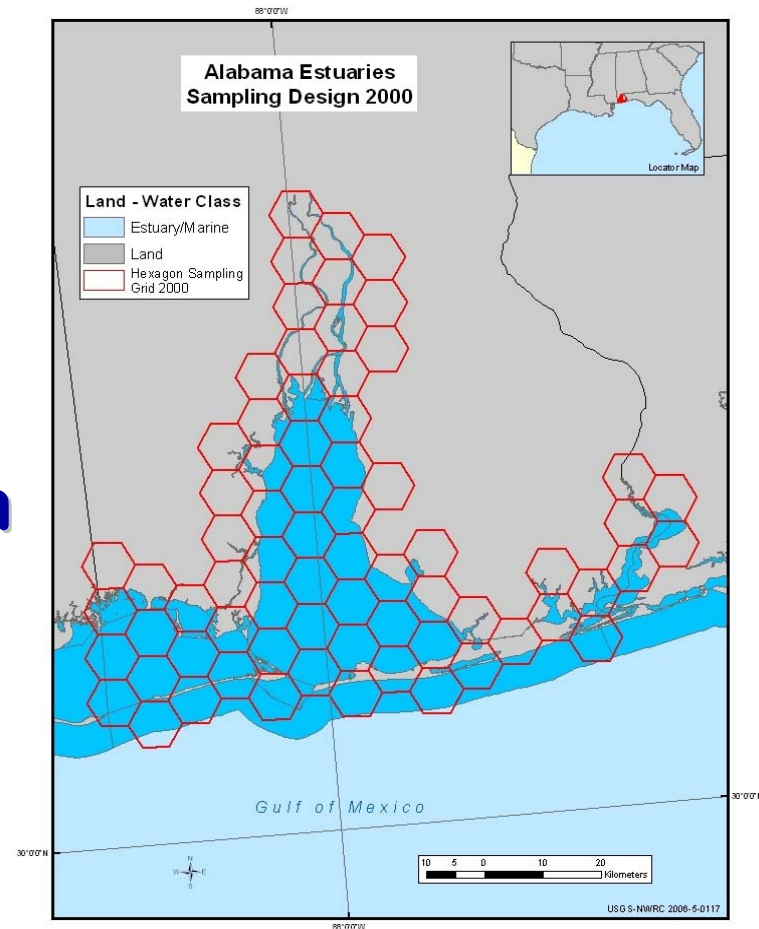
Bake (Analyze)

Use the Cumulative Distribution Function (CDF) to estimate the areal extent of habitat condition

What's the Assessment Unit?

Using a grid design for a state-level probabilistic survey, the smallest assessment unit within an estuary is the “polygon.”

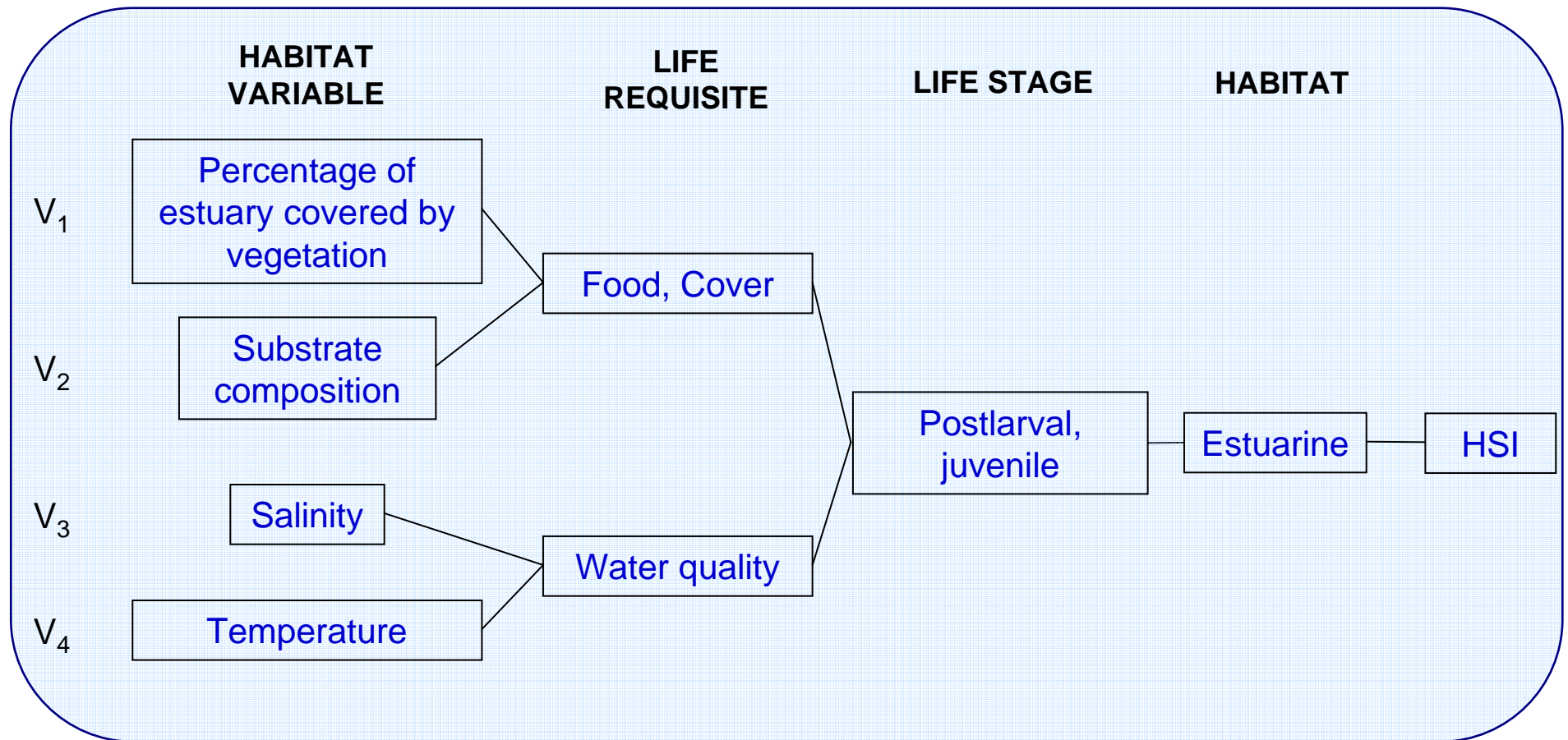
*NCA State-level Survey Design
for Alabama Estuaries*



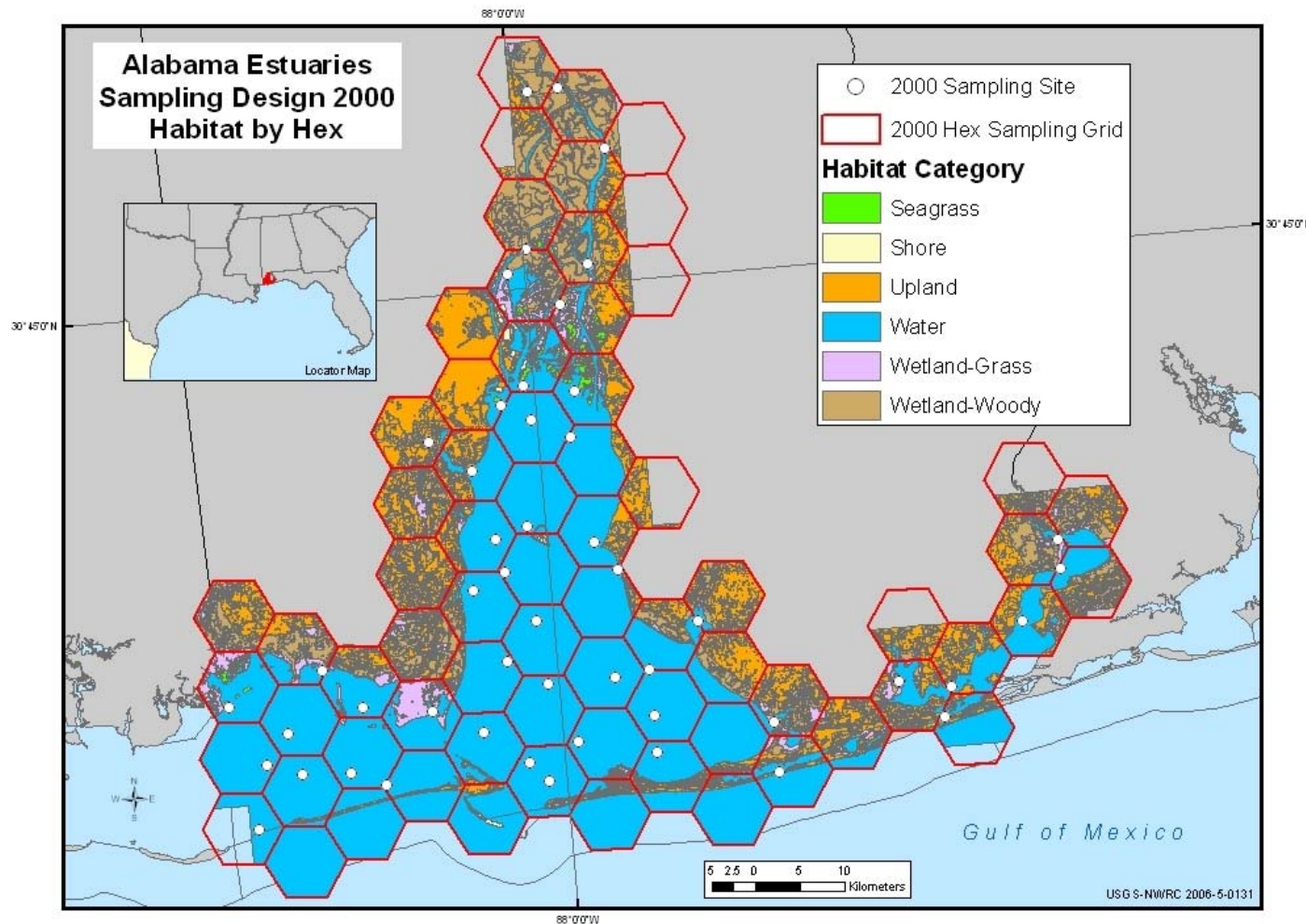
RESEARCH & DEVELOPMENT

Building a scientific foundation for sound environmental decisions

U.S. Fish & Wildlife Service Habitat Suitability Index (HSI) Models: Northern Gulf of Mexico Brown Shrimp



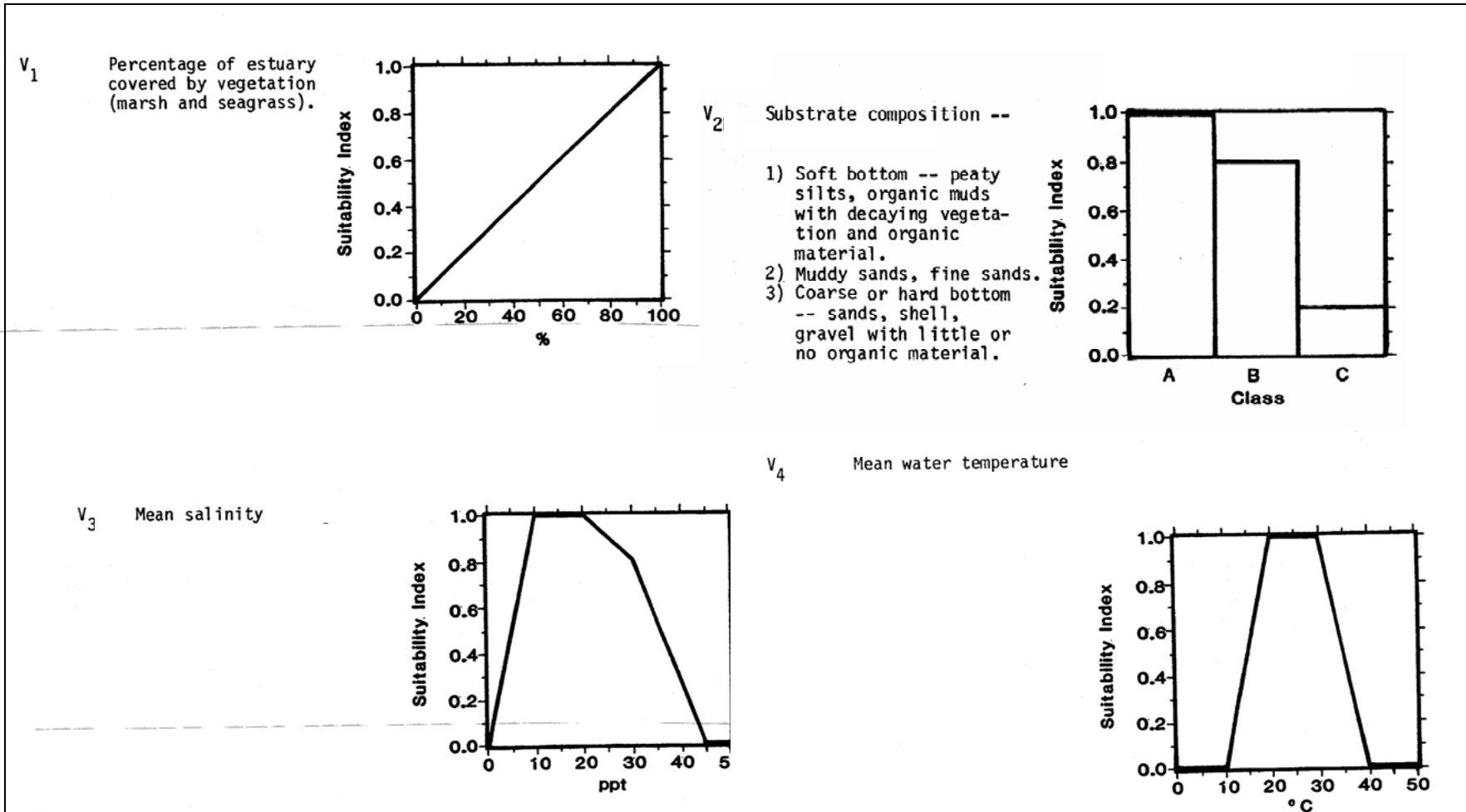
Land cover Data Used to Calculate the Area of Each Habitat Category Within Each Polygon



RESEARCH & DEVELOPMENT

Building a scientific foundation for sound environmental decisions

Habitat Suitability Graphs



Turner, R. E. and M. S. Brody. 1983. Habitat suitability index models: Northern Gulf of Mexico brown shrimp and white shrimp. U.S. Fish & Wildlife Service FWS/OBS-82/10.54: 24p.

RESEARCH & DEVELOPMENT

Building a scientific foundation for sound environmental decisions

Suitability Index (SI) values for each variable (V_x) were determined from the graphs and used to calculate the food and cover (FC) and water quality (WQ) components of the HSI for each polygon:

$$FC^* = (SI_{V1}^2 \times SI_{V2})^{1/3}$$

$$WQ = (SI_{V3} \times SI_{V4})^{1/2}$$



*At stations where SAV was not expected to occur naturally, the FC variable was calculated as $(SIV2)^{1/3}$

The HSI value is equal to the FC or WQ component value; whichever is lowest

Example data from Mobile Bay, AL

sta_name	SIV1	SIV2	SIV3	SIV4	SIV1_2 (SIV1_2*SIV2)	FC (SIV3*SIV4)	WQ	HSI		
AL00-0001	0.2	0.6	0.3	1.0	0.06	0.034	0.3	0.5	0.3	
AL00-0002	0.1	0.4	0.6	1.0	0.01	0.004	0.2	0.6	0.8	0.2
AL00-0003	0.0	1.0	0.7	1.0	0.00	0.000	1.0	0.7	0.8	0.8
AL00-0004	0.2	0.8	0.3	1.0	0.02	0.020	0.3	0.3	0.5	0.3

Polygon scale (site) assessment

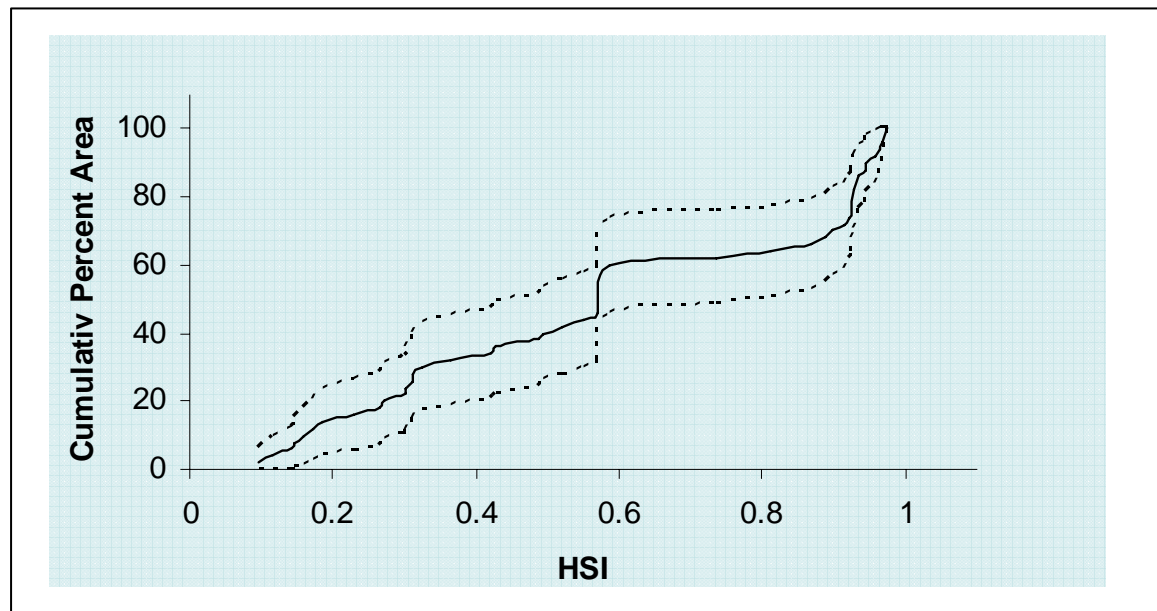
Assigning a Habitat Score

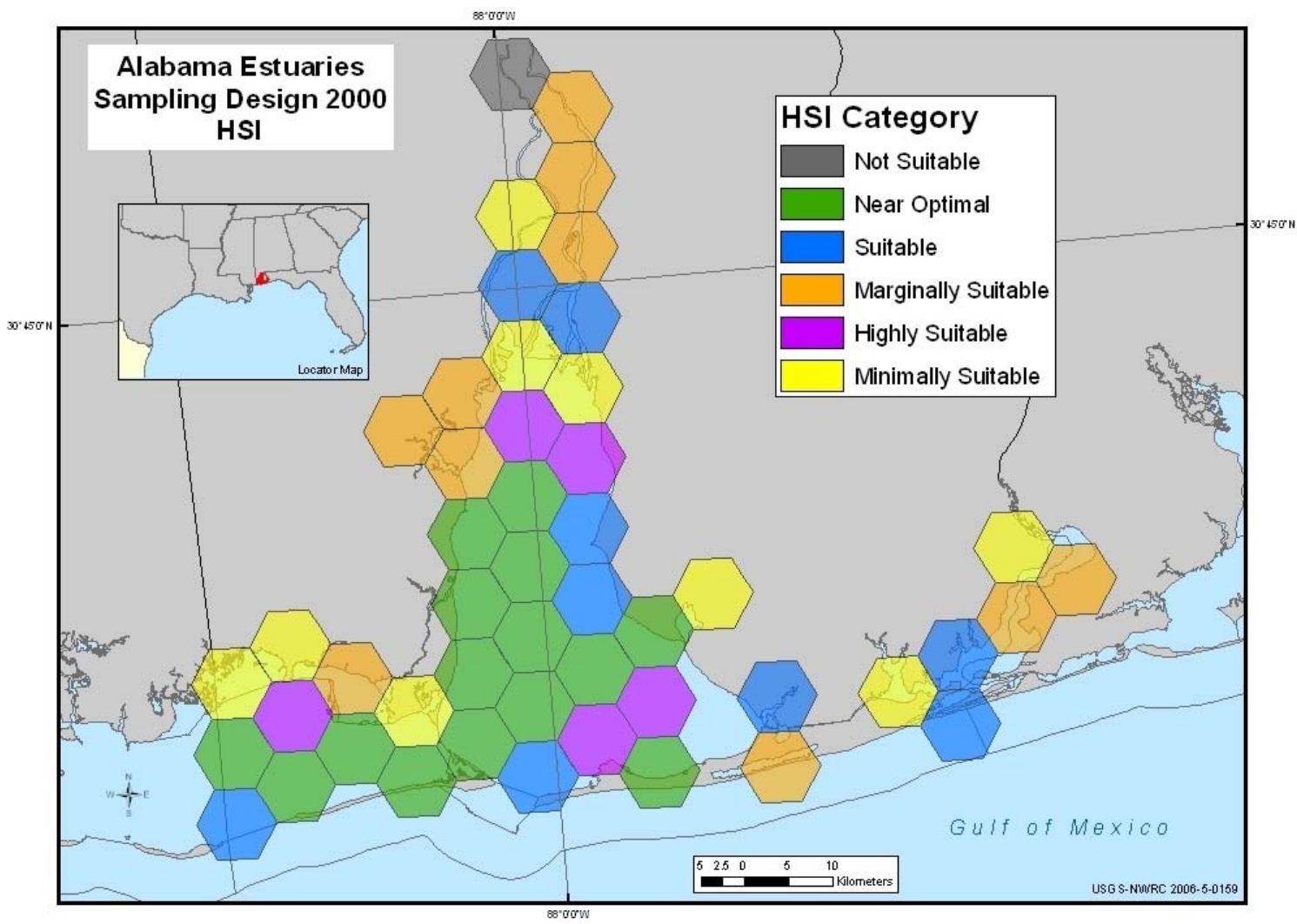
The HSI were given a condition description according to the following threshold values:

Calculated HSI	Habitat Assessment
< 0.1	Not suitable
0.1-0.3	Marginally suitable
>0.3-0.5	Minimally suitable
0.5-0.7	Suitable
>0.7-0.9	Highly suitable
>0.9	Near Optimal

Since the survey data were collected using a random probabilistic survey design-

The cumulative distribution function (CDF) can be used to estimate the areal extent of habitat suitability based on these ranges.

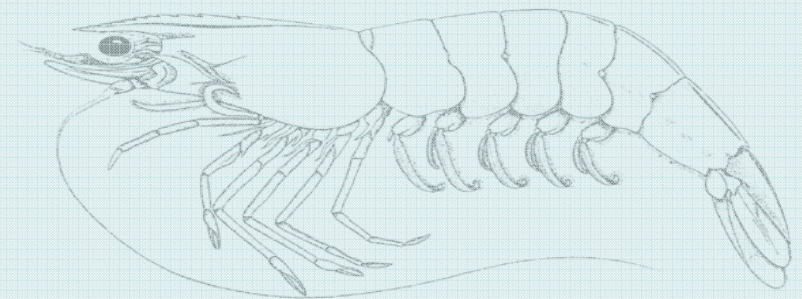
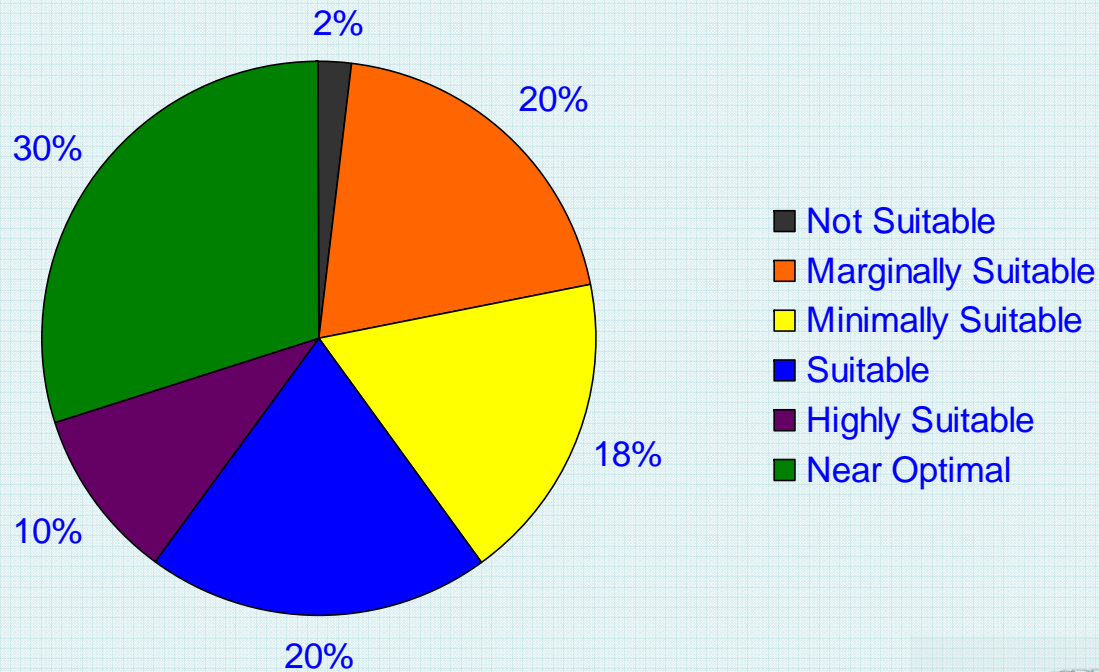




RESEARCH & DEVELOPMENT

Building a scientific foundation for sound environmental decisions

The estimated areal extent of habitat suitability for brown shrimp in Mobile Bay, AL



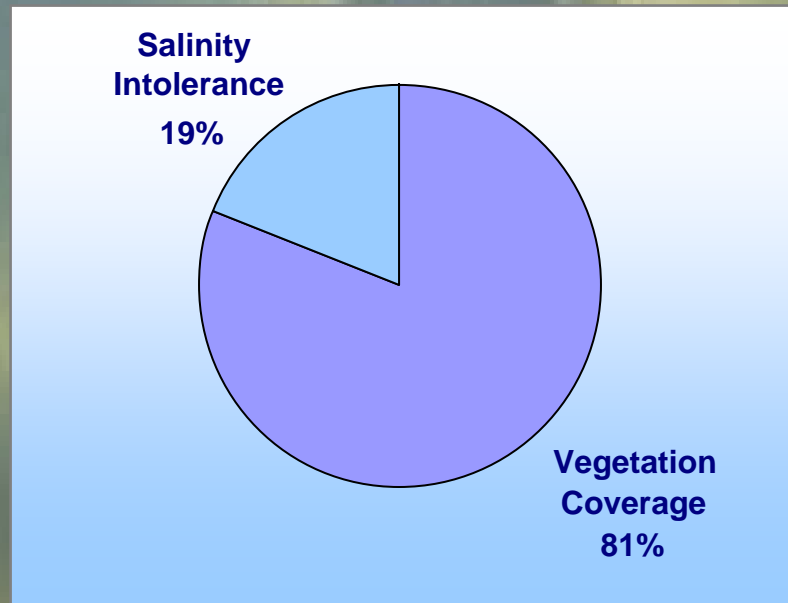
RESEARCH & DEVELOPMENT

Building a scientific foundation for sound environmental decisions

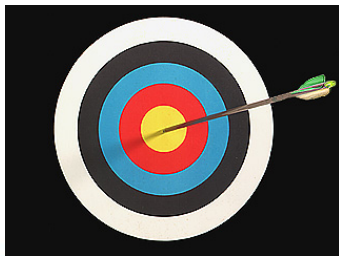
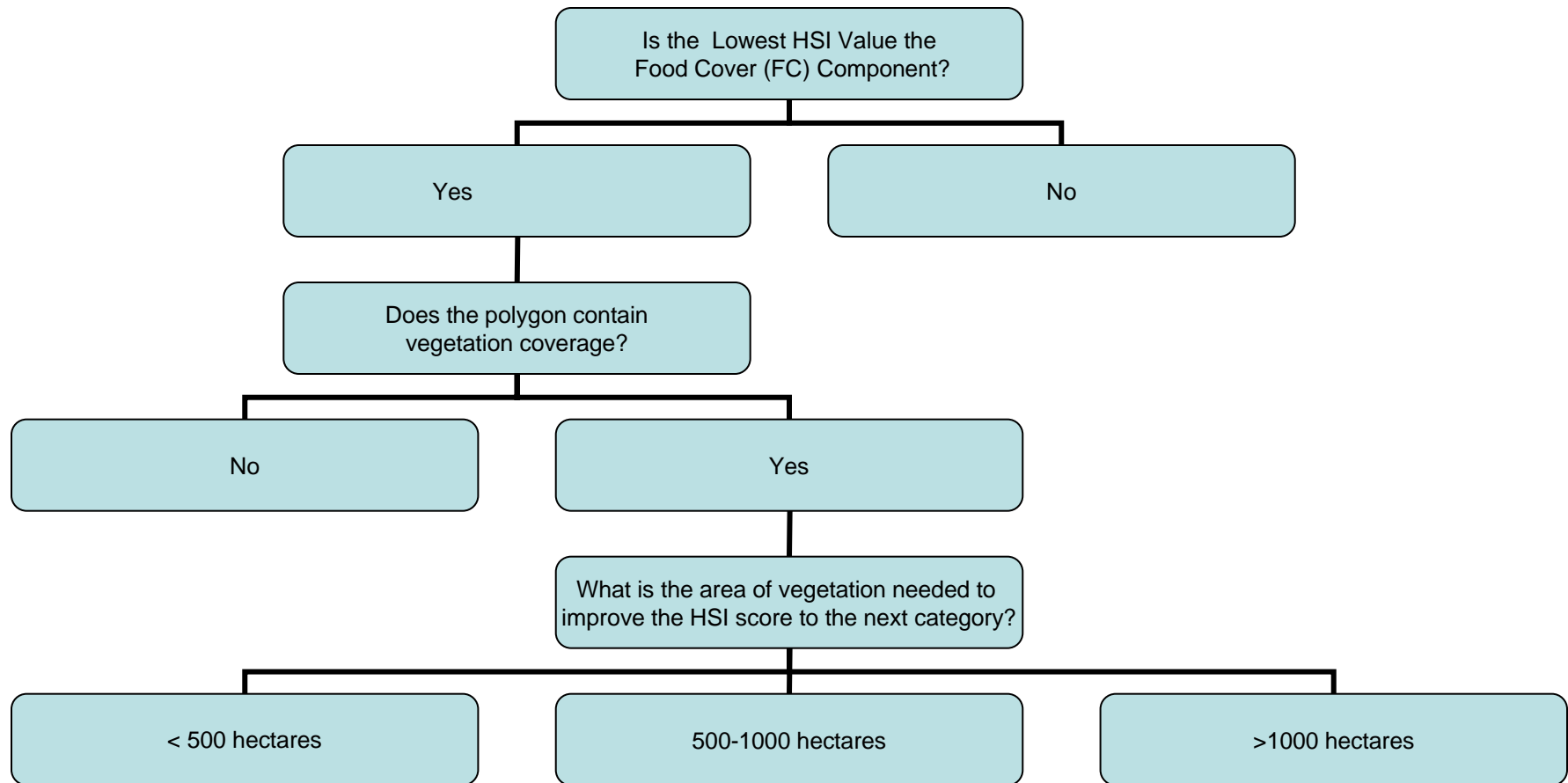
You wanna put that dock where?

- Knowing the areal extent of habitat suitability for a given species helps support decisions to protect habitat
- Reducing vegetation coverage in a polygon will decrease the food cover value of the area and could decrease the quality of habitat
- On the other hand, where habitat is not suitable, can it get any worse?

Habitat Suitability scores less than 'suitable' (minimally, marginally or not suitable) were broken down into the components contributing to the condition



Where habitat condition is less than suitable...



RESEARCH & DEVELOPMENT

Building a scientific foundation for sound environmental decisions

Candidate hexagons were targeted for vegetation restoration, based on the following:

Habitat Condition:

not suitable
suitable

marginally suitable
highly suitable

minimally suitable
near optimal

Specific physical parameters:

salinity
depth

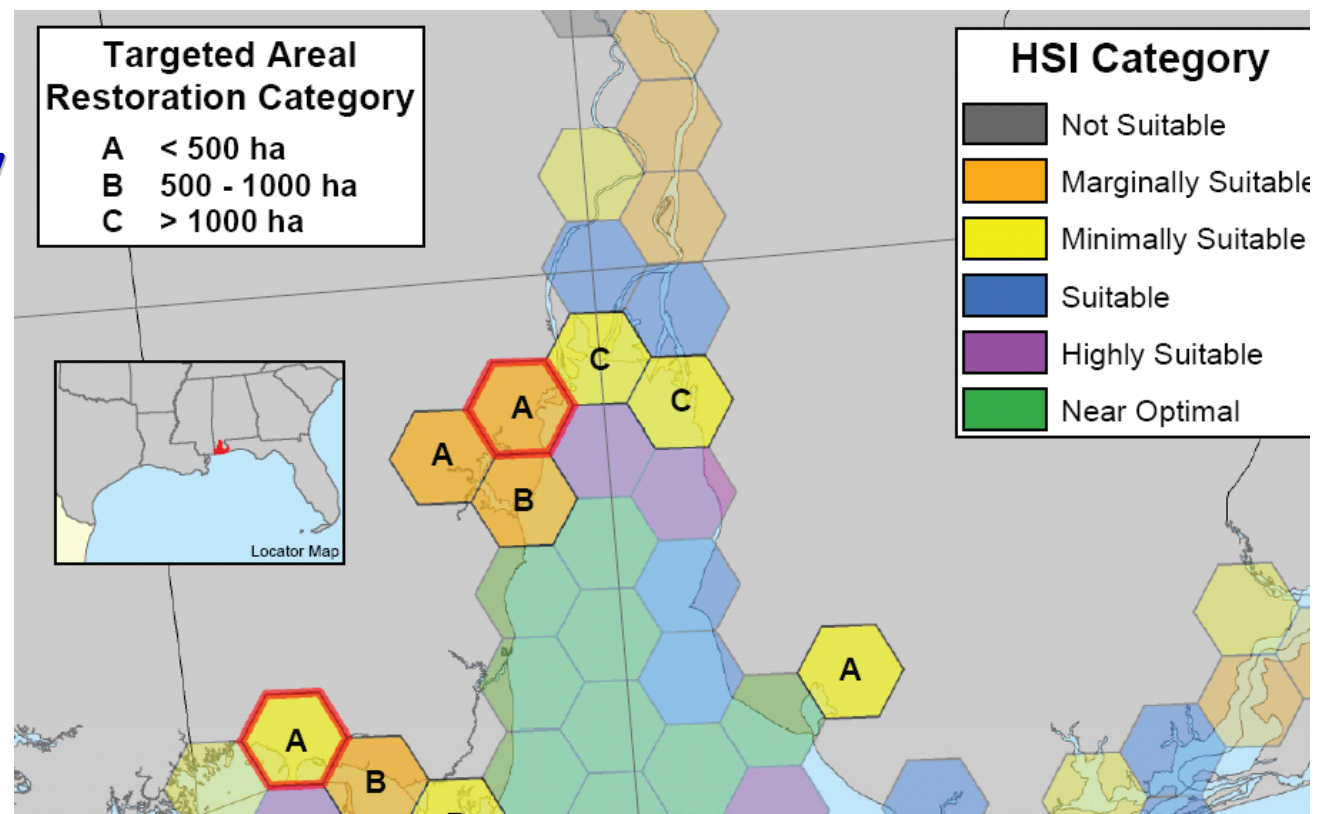
temperature
vegetation coverage

grain size

Areal extent of restored vegetation needed to improve the polygon's HSI score to the next category.

The two hexagons outlined in red were identified as having both existing SAV and requiring < 500 ha of restored vegetation to improve the HSI score.

Areas with existing vegetation are more likely to support SAV restoration efforts; therefore the areas within these two hexagons are candidates for targeted SAV restoration to improve brown shrimp habitat suitability.



An aerial photograph of a coastal wetland or estuary. The landscape is a complex network of blue waterways, including channels, ponds, and larger bodies of water, interspersed with green, vegetated land. The water appears to be a mix of light and dark blue, suggesting varying depths or water quality. The vegetation is a dense green, typical of marshland or mangrove areas. The overall scene is a natural, undisturbed ecosystem.

**Why use this
approach?**



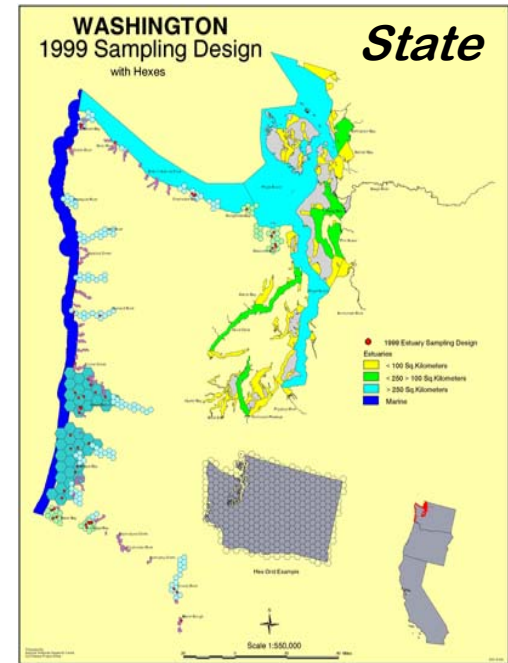
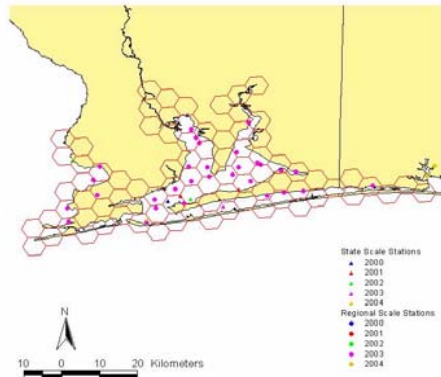
Data Availability

**Data for this approach is available for all
the nation's estuarine resources
(thanks NCA and NWI)**

RESEARCH & DEVELOPMENT

Building a scientific foundation for sound environmental decisions

Scalability



RESEARCH & DEVELOPMENT

Building a scientific foundation for sound environmental decisions

Versatility

This approach can be applied using generic HSI models like the FWS or more refined models developed for individual systems. Either way, the result is an estimated proportion of habitat in a given condition.

The approach could be used as a screening tool to answer management questions such as:

- What areas could be restored to improve habitat quality
- How does this restoration contribute to the areal percentage of suitable habitat within an estuary? Region?
- and maybe later... Has restoration improved habitat condition?