

Lacreek National Wildlife Refuge Vegetation and Land-Cover Map

Ownership

- Lacreek
- Private
- State

Animal Units

- 1.0 Blacktailed Prairie Dog Town Grassland Complex

Lacr_veg

- 2.1 Soapweed Yucca (Sparse Understory) Shrub H.V.
- 2.2 Soapweed Yucca / Needle-and-thread Shrub H.V.
- 3.1 Needle-and-thread / Soapweed Yucca H.V.
- 3.2 Prairie Sandreed - Needle-and-thread H.V.
- 3.3 Prairie Sandreed - Sun Sedge H.V.
- 4.0 Little Bluestem - (Sideoats Grama, Blue Grama) - Threadleaf Sedge

Upland Grassland

- 5.0 Needle-and-thread - Blue Grama - Threadleaf Sedge H.V.
- 6.0 Big Bluestem - Switchgrass - Sawtooth Sunflower H.V.
- 7.0 Western Wheatgrass - Blue Grama - Threadleaf Sedge H.V.
- 8.0 Kentucky Bluegrass - (Western Wheatgrass) Semi-natural H.V.
- 9.0 Smooth Brome - (Western Wheatgrass) Semi-natural H.V.
- 10.0 Crested Wheatgrass - (Western Wheatgrass, Needle-and-Thread)
- 11.0 Intermediate Wheatgrass Semi-Natural H.V.
- 12.1 Mixed Grassland
- 12.2 Mixed Grassland (Warm Season Natives)
- 12.3 Mixed Grassland (Cool Season Natives)
- 35.1 Native Species Plantings (Sideoats Grama)
- 35.2 Native Species Plantings (Mixed Grasses)
- 35.3 Native Species Plantings (Switchgrass)

Forblands

- 13.0 Mixed Forbland
- 14.0 Canada Thistle - Weedy Forb Great Plains H.V. (Provisional)
- 15.0 Wild Licorice Stands
- 16.0 Water Smartweed H.V.

Mesic Grasslands

- 17.0 Switchgrass - (Western Wheatgrass) H.V.
- 18.1 Foxtail Barley H.V.
- 18.2 Saltgrass H.V.
- 19.0 Prairie Cordgrass - Sedge species H.V.
- 20.0 Common Reed H.V.

Wetland Herbaceous Vegetation

- 21.0 Baltic Rush H.V.
- 22.0 Nebraska Sedge H.V.
- 23.0 Marsh Spikerush H.V.
- 24.0 Threesquare Bulrush H.V.
- 25.0 Hardstem Bulrush - Broadleaf Cattail - (Softstem Bulrush) Sandhi
- 26.1 Cattail species Great Plains H.V. (Semipermanently Flooded)
- 26.2 Cattail species Great Plains H.V. (Seasonally Flooded)

Upland Shrubland

- 27.0 Western Snowberry Shrubland

Mesic Shrublands

- 28.0 American Plum Stands
- 29.0 False Indigobush Stands
- 30.0 Coyote Willow / Mesic Graminoids Shrubland

Mesic Woodlands

- 31.0 American Hackberry Stands
- 32.0 Peachleaf Willow Woodland
- 33.0 Plains Cottonwood Woodland
- 34.0 Green Ash Stand

Agriculture

- 40.0 Agricultural Lands
- 41.0 Shelterbelt

Barren Lands

- 42.0 Beach
- 43.0 Sandhills Blowout

Land-use and Transportation

- 44.0 Bennett County Roads
- 45.0 Refuge Management Roads
- 46.0 Levees (Flood Control)
- 47.0 Dikes (Separate Impoundments)
- 48.0 Cemetery

Ponds

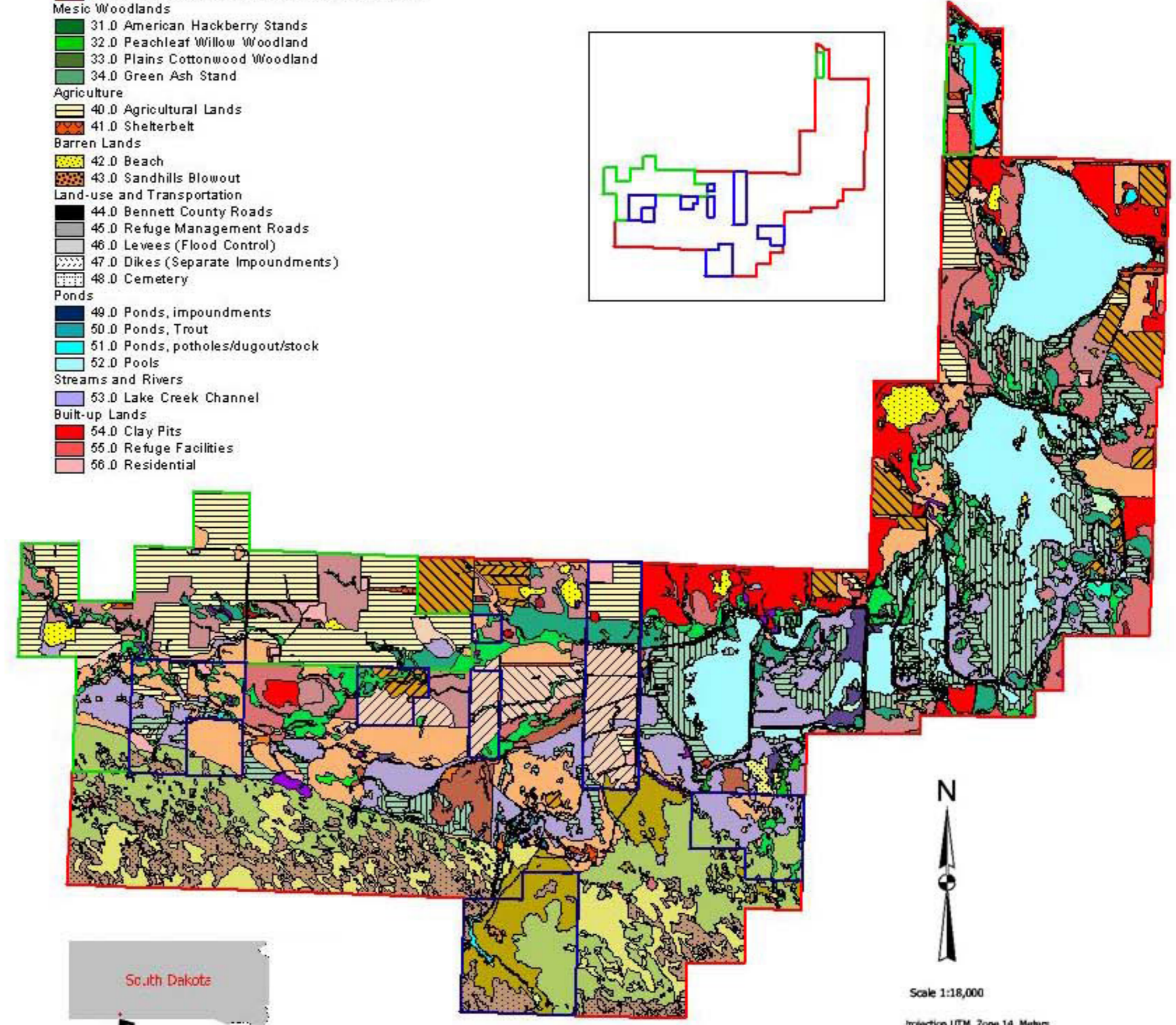
- 49.0 Ponds, impoundments
- 50.0 Ponds, Trout
- 51.0 Ponds, potholes/dugout/stock
- 52.0 Pools

Streams and Rivers

- 53.0 Lake Creek Channel

Built-up Lands

- 54.0 Clay Pits
- 55.0 Refuge Facilities
- 56.0 Residential



Scale 1:18,000

Projection ITRM Zone 14 Meters

