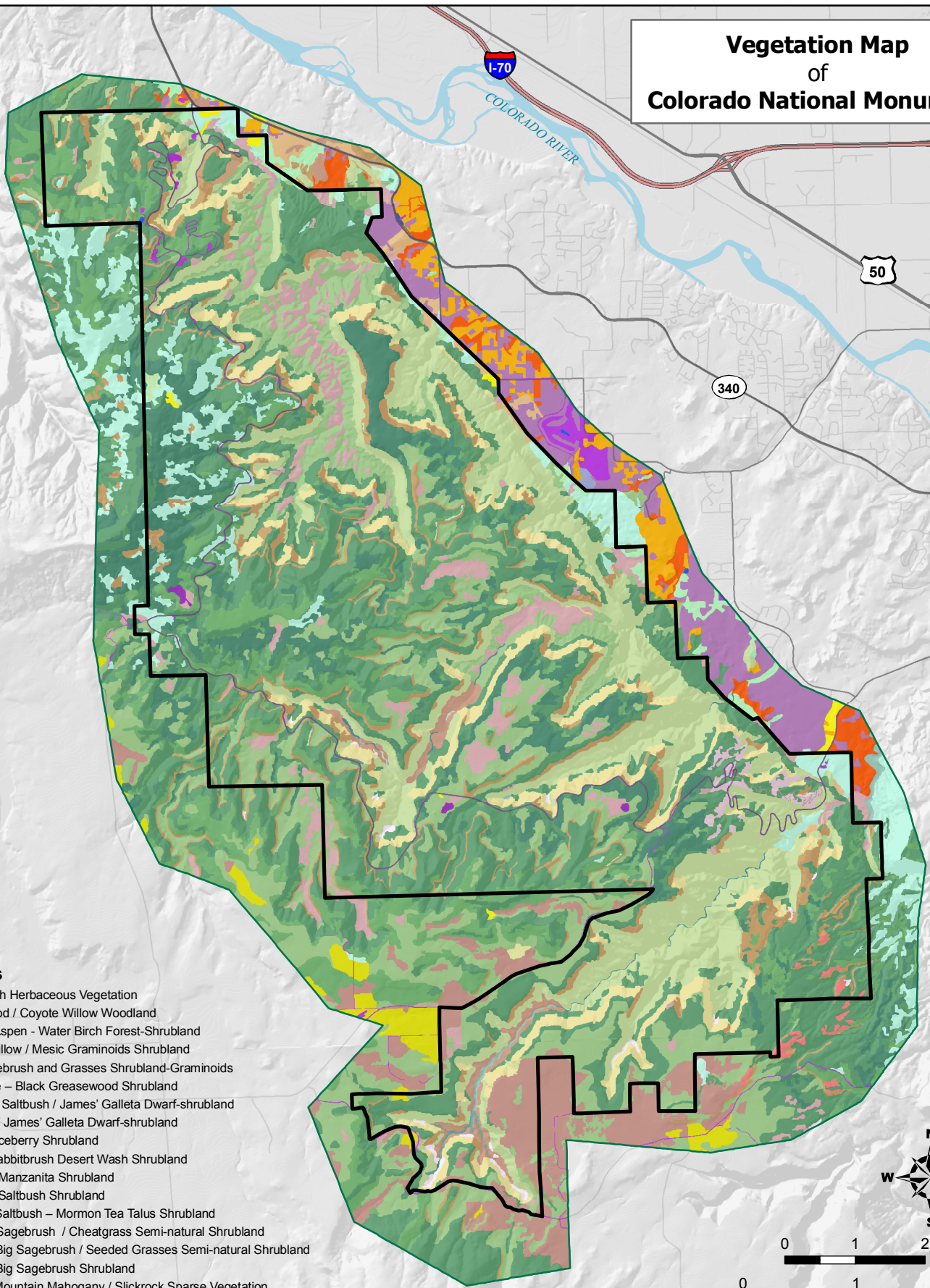


# Vegetation Map of Colorado National Monument



## Map Classes

- 18 Baltic Rush Herbaceous Vegetation
- 29 Cottonwood / Coyote Willow Woodland
- 14 Quaking Aspen - Water Birch Forest-Shrubland
- 37 Coyote Willow / Mesic Graminoids Shrubland
- 4 Black Sagebrush and Grasses Shrubland-Graminoids
- 12 Shadscale - Black Greasewood Shrubland
- 13 Gardner's Saltbush / James' Galleta Dwarf-shrubland
- 23 Winterfat / James' Galleta Dwarf-shrubland
- 2 Utah Serviceberry Shrubland
- 17 Rubber Rabbitbrush Desert Wash Shrubland
- 3 Greenleaf Manzanita Shrubland
- 10 Fourwing Saltbush Shrubland
- 9 Fourwing Saltbush - Mormon Tea Talus Shrubland
- 5 Basin Big Sagebrush / Cheatgrass Semi-natural Shrubland
- 7 Wyoming Big Sagebrush / Seeded Grasses Semi-natural Shrubland
- 8 Wyoming Big Sagebrush Shrubland
- 16 Littleleaf Mountain Mahogany / Slickrock Sparse Vegetation
- 30 Gambel Oak / Skunkbush Woodland
- 22 Utah Juniper / Talus Mixed Shrub Woodland
- 19 Two-Needle Pinyon Pine - Utah Juniper / Wyoming Big Sagebrush Woodland
- 28 Two-Needle Pinyon Pine - Utah Juniper / Sparse Understory Woodland
- 20 Two-Needle Pinyon Pine - Utah Juniper / Multiple Shrub Woodland
- 25 Two-Needle Pinyon Pine - Utah Juniper / Black Sagebrush Woodland
- 15 Cheatgrass Semi-natural Herbaceous Vegetation
- 31 Crested Wheatgrass Semi-natural Herbaceous
- 34 Nonvascular Cover - 'Board Beds' Unit, Entrada Sandstone
- 44 Serpent's Trail

## Land Use Classes

- Bare Rock/Sand
- Herbaceous
- Transitional
- Open Water
- Residential
- Woody
- Non-residential Developed
- Quarries/Strip mines/Gravel pits
- Colorado National Monument Boundary



0 1 2 Kilometers

0 1 2 Miles

