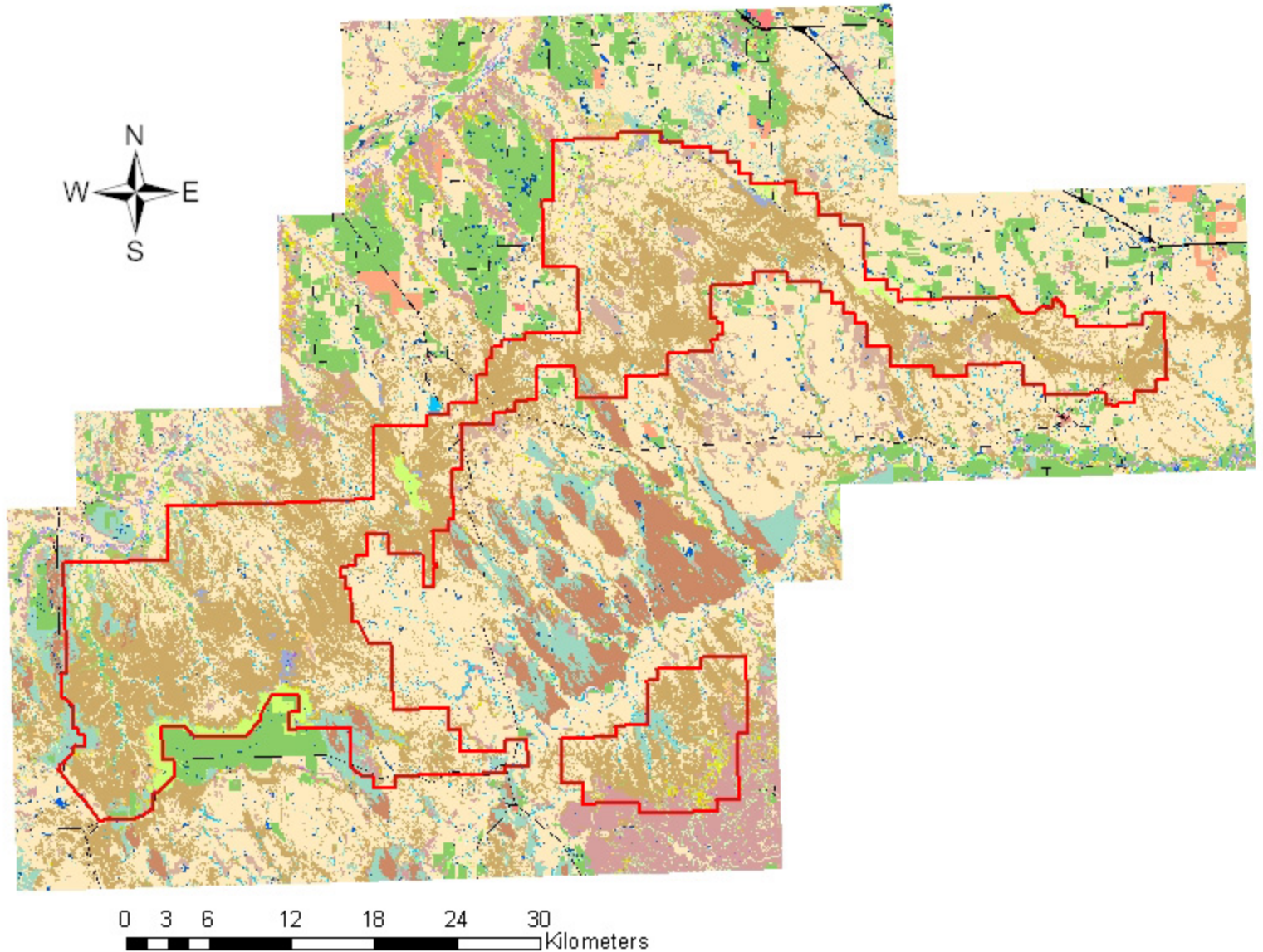


# Badlands National Park Vegetation Classes / Land Use



  Park Boundary

## Vegetation Classes

- 3-Leaved Sumac / Threadleaf sedge Shrub Grassland
- Badlands Sparse Vegetation Complex
- Blue grama Grassland
- Chokecherry - American plume Shrubland
- Eastern cottonwood - Peachleaf/Sandbar Willow Woodland
- Emergent Wetland
- Greasewood / Western wheatgrass Shrubland
- Green ash - American elm / Chokecherry Woodland
- Introduced Grassland
- Little Bluestem - Grama grasses - Threadleaf sedge Grassland
- Ponderosa Pine / Rocky Mt juniper Woodland

- Prairie Dog Town Complex
- Rabbitbrush Shrubland
- Rocky Mountain juniper / Little-seed ricegrass Woodland
- Sand sagebrush / Prairie sandreed Shrubland
- Sandbar Willow Temporarily-flooded Shrubland
- Seeded Mixed Grass Prairie
- Silver buffaloerry Shrubland
- Silver sagebrush / Western wheatgrass Shrubland
- Soapweed yucca / Prairie sandreed Shrub Grassland
- Switchgrass Grassland
- Western Wheatgrass Grassland Alliance
- Western snowberry Shrubland
- Western wheatgrass - Green needlegrass Grassland

## Land Use

- Croplands - Pasture
- Mixed-urban / Built-up land
- Other Agricultural Land
- Reservoirs & Open Water
- Rivers - Perennial
- Streams - Intermittent
- Strip Mines, Quarries, & Gravel Pits
- Transportation, Communications, and Utilities