

Field Reconnaissance Photo Album Fire Island National Seashore

June 1999



Figure 1-1. ACRU branching



Figure 1-2. Amelanchior



Figure 1-3. Beach complex



Figure 1-4. Beach ecotones



Figure 1-5. Beach road with shrubs on the side



Figure 1-6. Canopy early maritime



Figure 1-7. Fire Island National Seashore marina



Figure 1-8. Foredune grass



Figure 1-9. Golden heather

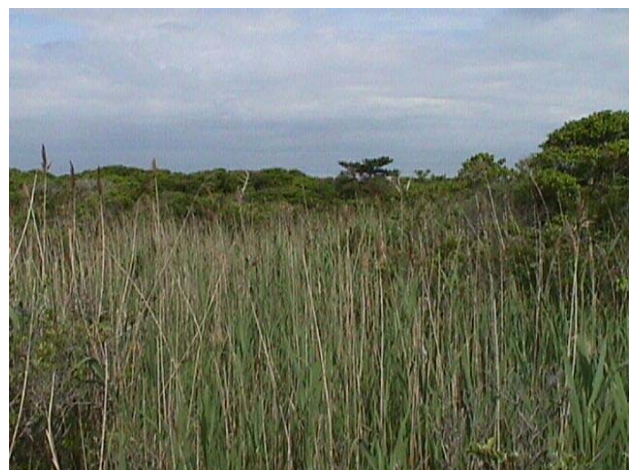


Figure 1-10. Phragmites Wetland



Figure 1-11. Sunken forest understory



Figure 1-12. Sunken forest boardwalk



Figure 1-13. White Tail Deer in Smilax



Figure 1-14. Floyd house



Figure 1-15. Deciduous forest at Floyd



Figure 1-16. Hedgerow at Floyd



Figure 1-17. Mix early on Floyd Estate



Figure 1-18. Pine barrens on Floyd Estate



Figure 1-19. Amelanchior at Talisman



Figure 1-20. Baccharis



Figure 1-21. Beach at Talisman



Figure 1-22. Beach grass



Figure 1-23. Grass at Old Inlet



Figure 1-24. Interdune at Old Inlet



Figure 1-25. Jim and Greg



Figure 1-26. Marsh



Figure 1-27. Low Salt Marsh



Figure 1-28. Poison Ivy



Figure 1-29. Deer in shrub



Figure 1-30. Robin on shrub



Figure 1-31. Sailors haven marina



Figure 1-32. White tailed deer in Smilax

October 1999



Figure 2-1. Andy with a GPS unit



Figure 2-2. Aster swamp



Figure 2-3. *Baccharis halimifolia*



Figure 2-4. Back foredune



Figure 2-5. *Baccharis halimifolia*



Figure 2-6. Bayberries



Figure 2-7. Beach grass and pea



Figure 2-8. Beach access



Figure 2-9. Beach heather



Figure 2-10. Browse line



Figure 2-11. Browse line at Floyd



Figure 2-12. Cedar woodland



Figure 2-13. High Salt Marsh



Figure 2-14. Dune overlook



Figure 2-15. Endangered Knotweed



Figure 2-16. Endangered Knotweed



Figure 2-17. Field at Floyd Estate



Figure 2-18. Forest at Floyd Estate



Figure 2-19. Garrett in Phragmites



Figure 2-20. Garrett and Andy



Figure 2-21. Glasswort



Figure 2-22. Golden rod



Figure 2-23. Grass and shrub



Figure 2-24. Garrett and Andy standing next to White cedar tree



Figure 2-25. High Tide Bush



Figure 2-26. Japanese Black Pine Forest



Figure 2-27. Many communities with a light house in background



Figure 2-28. Meadow grass



Figure 2-29. Meadow grass



Figure 2-30. Mosquito ditch



Figure 2-31. *Myrica pennsylvanica*



Figure 2-32. *Myrica pennsylvanica*



Figure 2-33. Paul with a GPS unit



Figure 2-34. Phragmites in the sun



Figure 2-35. Pine grass woodland



Figure 2-36. Pine spp.



Figure 2-37. Shrubland



Figure 2-38. Smilax



Figure 2-39. Smith Point to the left



Figure 2-40. Smith Point to the right



Figure 2-41. Grass



Figure 2-42. Close up of Grass



Figure 2-43. Grass



Figure 2-44. Shrub



Figure 2-45. Virginia creeper and White cedar



Figure 2-46. Old Inlet Grassland

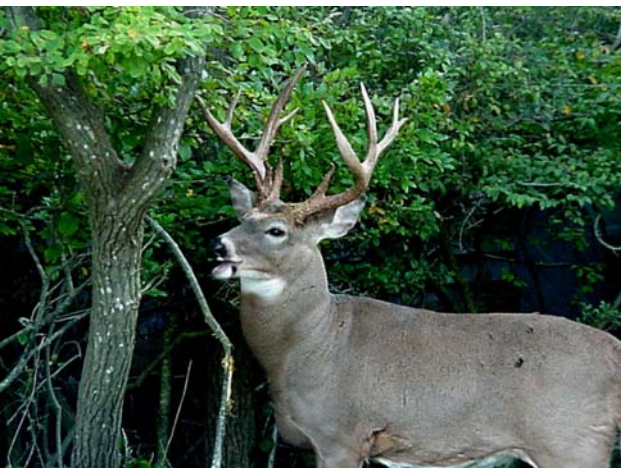


Figure 2-47. Big buck



Figure 2-48. Robert Moses monument

May 2000



Figure 3-1. Sparsely vegetated sand



Figure 3-2. Interdune area with many types



Figure 3-3. Close up leafless Myrica (?)



Figure 3-4. Sound-side grasses (ammophila or spartina?)



Figure 3-5. Julie in Sunken Forest



Figure 3-6. Dense shrub interdune area (near Sunken Forest)



Figure 3-7. Beach plum in bloom (*Prunus maritima*)



Figure 3-8. Holly trunk, empty understory



Figure 3-9. Hudsonia patch with sand and Ammophila



Figure 3-10. Pines (*japonica* or *rigida*?)



Figure 3-11. Ammophila on back dune



Figure 3-12. *Pinus ridgida* stand



Figure 3-13. Phragmites and *Baccaris halimifolia*



Figure 3-14. Cedars (JUVI?)



Figure 3-15. Holly and Sassafras understory



Figure 3-16. Mixed area with *Ammophila*, *Hudsonia*, and Cedars (dead *P. japonica* in the background)



Figure 3-17. Median strip on parkway (with autumn olive)



Figure 3-18. Pine woodland near the lighthouse (*P. rigida*?)



Figure 3-19. Sandy "shell barrens" near lighthouse (on sound side)



Figure 3-20. Cedars with Carex



Figure 3-21. Cedars with sand and poison ivy



Figure 3-22. Snad, ammophia, and hudsonia



Figure 3-23. Scott in Panicum virgatum, cattail(?), Phragmites area



Figure 3-24. Toxidendron radicans bushes



Figure 3-25. Shrubs with Lighthouse in background



Figure 3-26. Ammophila and cedar shrubs with other stuff (behind lighthouse)



Figure 3-27. Myrica and cedar behind lighthouse



Figure 3-28. Scott in grasses (?) and shrubs



Figure 3-29. Phragmites(?) shrubs in background



Figure 3-30. P. rigida stand with shrub and Ammophila



Figure 3-31. *Ammophila*



Figure 3-32. Dense *Ammophila*



Figure 3-33. Cedars with interdune grass (???)



Figure 3-34. Scott with cedars and shrubland (*Myrica*)



Figure 3-35. *Phragmites* wetland



Figure 3-36. Grasses and *P. rigida*



Figure 3-37. Bare *Myrica pennsylvanica*



Figure 3-38. Phragmites and BAHA (some *Myrica*)



Figure 3-39. Phragmites with *Spartina*(?)



Figure 3-40. Sparsely vegetated



Figure 3-41. *Hudsonia* and some *Ammophila* surrounded by shrubs



Figure 3-42. *Myrica pennsylvanica* shrubland



Figure 3-43. *Prunus maritima* in full bloom



Figure 3-44. *P. maritima* blooming in interdune area



Figure 3-45. Dense mixed shrubland



Figure 3-46. *Ammophila* with some blooming *P. maritima*



Figure 3-47. Shrubland



Figure 3-48. Anne in dense shrubs (wilderness area)



Figure 3-49. *P. maritima* in bloom with various other



Figure 3-50. Dense shrubs and vines (wilderness area?)



Figure 3-51. *Ilex glabra* (Inkberry)



Figure 3-52. *Ilex glabra* (Inkberry) with berries



Figure 3-53. *Juniperus virginiana* and *Myrica*



Figure 3-54. Home in shrubland/forest



Figure 3-55. BAHA and Phragmites



Figure 3-56. Interdune and observation platform near Sailors Haven



Figure 3-57. *P. japonica* with shrubs



Figure 3-58. Back of foredune blooming *Prunus maritima*



Figure 3-59. Dense shrub



Figure 3-60. Flooded marshes on sound side



Figure 3-61. Salt marsh green up



Figure 3-62. Long view Spartina marsh



Figure 3-63. Pond in marshes



Figure 3-64. Snowy egret on flooded marsh



Figure 3-65. Hudsonia on dune



Figure 3-66. Various communities



Figure 3-67. Salt marsh



Figure 3-68. Canada geese in marsh



Figure 3-69. View of interdune and marsh from high dune



Figure 3-70. Whole width view from high dune



Figure 3-71. Interdune and blooming *P. maritima* from high dune



Figure 3-72. Matted vegetation in salt marsh



Figure 3-73. Matted vegetation in salt marsh



Figure 3-74. Shrubs on "high ground" surrounding salt marsh



Figure 3-75. Phragmites



Figure 3-76. Grass shrub mix looking towards sound



Figure 3-77. *P. rigida* woodland



Figure 3-78. Grassland/shrubland edge shot



Figure 3-79. Sand and overwashed vegetation with water



Figure 3-80. Ammophila and *P. maritima*



Figure 3-81. Anne with a GPS unit



Figure 3-82. Bay side view



Figure 3-83. Bayberry



Figure 3-84. Beach heather



Figure 3-85. Fire cherry



Figure 3-86. Inlet pond



Figure 3-87. Leslie in the field



Figure 3-88. Brackish Meadow



Figure 3-89. Poison Ivy –Yikes



Figure 3-90. Grass



Figure 3-91. Grass



Figure 3-92. Shrubland



Figure 3-93. Unknown plant



Figure 3-94. Bare shrubs (Prunus?)



Figure 3-95. Black-and-white warbler

September 2000



Figure 4-1. *Pinus rigida* and *Myrica pennsylvanica*



Figure 4-2. Richie in *Panicum virgatum*



Figure 4-3. Richie and *Smilax* over *Myrica pennsylvanica*



Figure 4-4. Close up of *Pinus rigida*



Figure 4-5. Close up of *Myrica pennsylvanica*



Figure 4-6. *Prunus maritima* and *Ammophila*



Figure 4-7. Pinus rigida woodland



Figure 4-8. Dune Overview



Figure 4-9. Scarlet oak overstory at Floyd Estate



Figure 4-10. Richie at Floyd Estate



Figure 4-11. Carya/Quercus forest at Floyd Estate



Figure 4-12. Carya at Floyd Estate



Figure 4-13. Scott in carex surrounded by phragmites



Figure 4-14. Inland marsh and *Spartina patens*



Figure 4-15. Inland marsh with water



Figure 4-16. Unknown flower



Figure 4-17. Mike in *Ammophila*



Figure 4-18. *Ilex opaca*-*Prunus serotina* –
Sasafra albidum



Figure 4-19. *Prunus maritima* shrub, and (with
Mike)



Figure 4-20. Sparse vegetation (*Ammophila*)



Figure 4-21. *Ammophila* grassland type



Figure 4-22. *Pinus japonica* woodland with rushes



Figure 4-23. *Baccharis halimifolia* shrubland



Figure 4-24. *Panicum virgatum* dominant



Figure 4-25. *Panicum* close up



Figure 4-26. *Carex* stand



Figure 4-27. Dune den (raccoon)



Figure 4-28. *Spartina patens* - *Solidago sempervirens* type



Figure 4-29. *Hudsonia tomentosa* - *Prunus maritime*



Figure 4-30. *Hudsonia tomentosa* with *Prunus maritime*



Figure 4-31. *Ammophila* grassland



Figure 4-32. *Ammophila* around *Prunus maritime*



Figure 4-33. *Hudsonia tomentosa* with *Toxicodendron radicans*



Figure 4-34. *Pinus japonica* at Robert Moses State Park



Figure 4-35. *Ammophila* at Robert Moses State Park



Figure 4-36. Andy in *Prunus maritime*



Figure 4-37. Deer in *Hudsonia tomentosa*



Figure 4-38. Scott with GPS

October 2001



Figure 5-1. Scott's "artistic" picture of *Fagus silvatica* (and we weren't even on Fire Island yet).



Figure 5-2. Ornamental at point 484 on Floyd Estate with field crew.



Figure 5-3. Maritime Holly Forest



Figure 5-4. Maritime Holly Forest



Figure 5-5. Field crew in High Salt Marsh



Figure 5-6. Maritime Holly Forest



Figure 5-7. Phragmites at Floyd Estate



Figure 5-8. Coastal Oak-Heath Forest



Figure 5-9. Coastal Oak-Heath Forest



Figure 5-10. Field crew in the Brackish Meadow



Figure 5-11. Field crew discussing field work



Figure 5-12. High Salt Marsh



Figure 5-13. Mosaic



Figure 5-14. Mosaic



Figure 5-15. Mosaic



Figure 5-16. Northern Beach Grass Dune



Figure 5-17. Field crew in Northern Beach Grass Dune



Figure 5-18. Overview



Figure 5-19. Overview



Figure 5-20. Phragmites invasion with no shrubs



Figure 5-21. Sea Beach Amaranth



Figure 5-22. Sea Beach Amaranth



Figure 5-23. Transition zone



Figure 5-24. Transition zone



Figure 5-25. Tyler working in the field

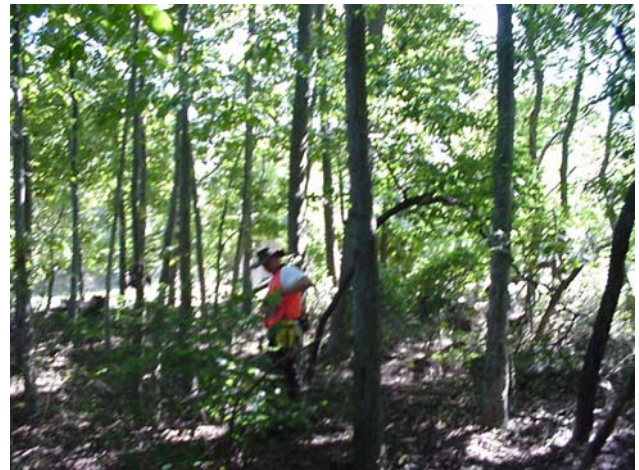


Figure 5-26. Scott at point 486 on Floyd Estate



Figure 5-27. Overview



Figure 5-28. Sunset

TNC Photos



Figure 6-1. Cedar woodland



Figure 6-2. Maritime Holly Forest



Figure 6-3. Maritime Holly Forest



Figure 6-4. Interdunal Swale



Figure 6-5. Interdunal Swale



Figure 6-6. Interdunal Swale



Figure 6-7. Maritime Dune



Figure 6-8. Maritime Dune



Figure 6-9. Maritime Dune



Figure 6-10. Maritime Dune



Figure 6-11. Maritime Forest



Figure 6-12. Maritime Forest



Figure 6-13. Pitch Pine Woodland



Figure 6-14. Pitch Pine Woodland



Figure 6-15. Shrub swamp



Figure 6-16. Pitch Pine Woodland



Figure 6-17. Pitch Pine Woodland



Figure 6-18. Maritime Beach



Figure 6-19. Maritime Dune



Figure 6-20. Maritime Dune



Figure 6-21. Maritime Shrubland



Figure 6-22. Maritime Shrubland



Figure 6-23. Brackish Meadow



Figure 6-24. Brackish Meadow



Figure 6-25. Interdunal Swale



Figure 6-26. Interdunal Swale