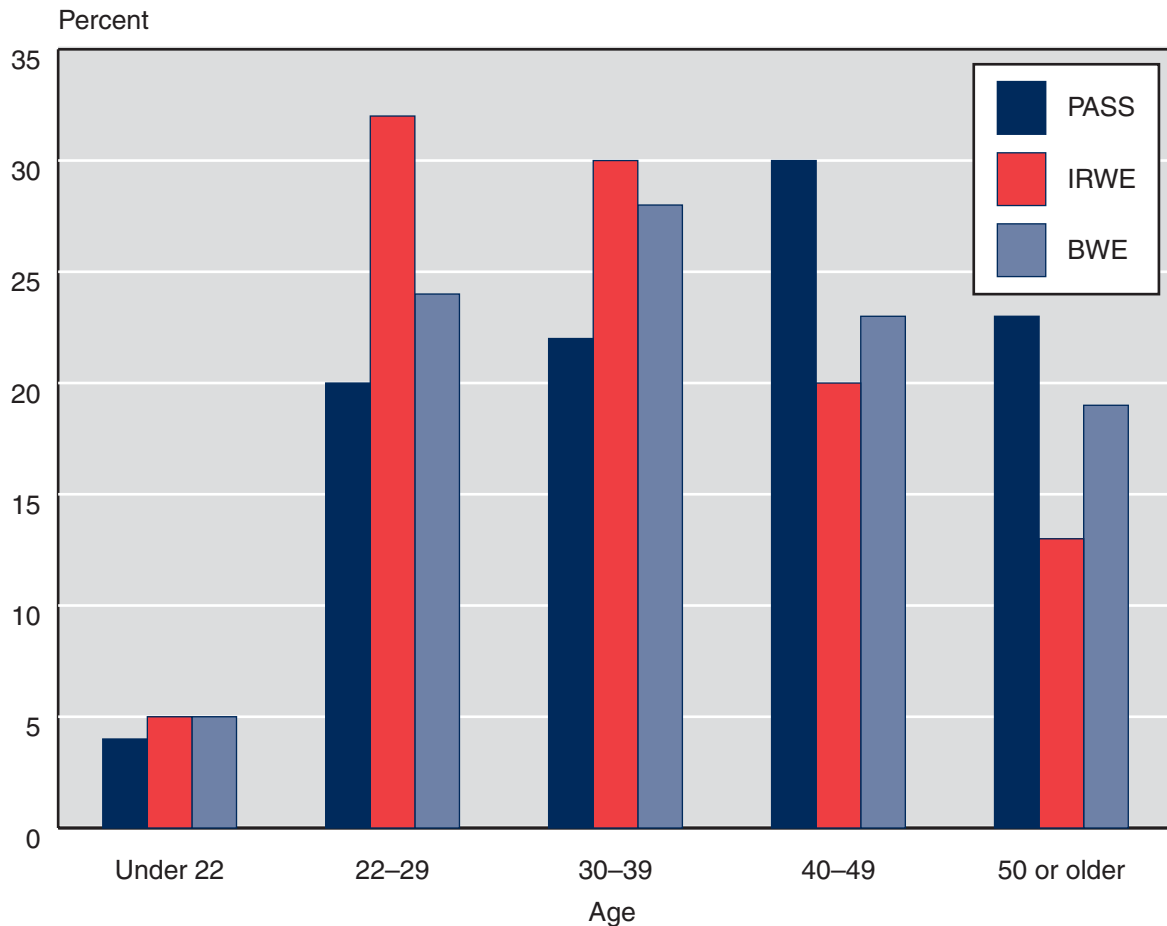


**Other Work
Incentive Participants**

Chart 9.
Percentage distribution, by age and provision, December 2005

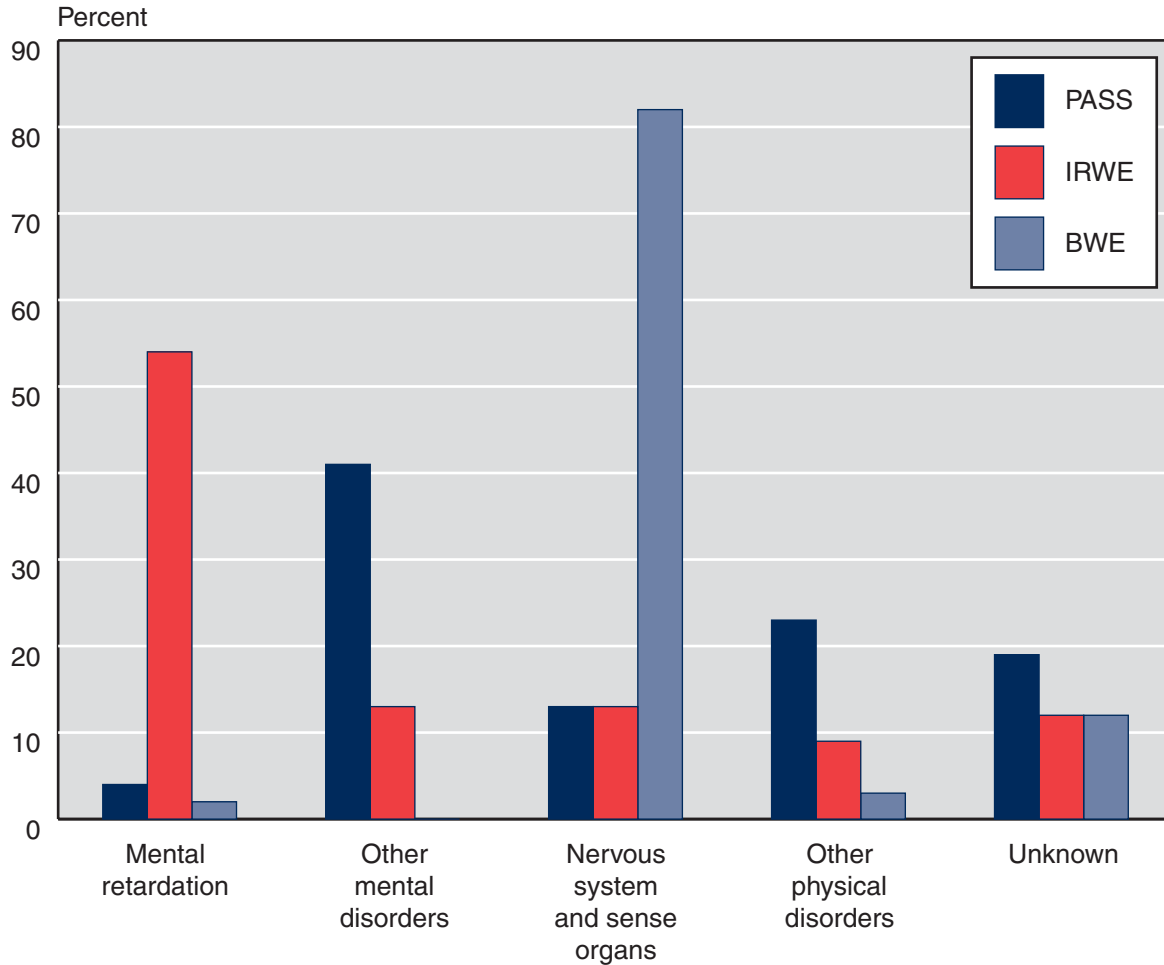
Recipients with income excluded under plans for achieving self-support (PASS), impairment-related work expenses (IRWE), or blind work expenses (BWE) were similar in age to all working recipients (Chart 3). PASS participants were somewhat older—53 percent were aged 40 or older, compared with 33 percent of those with IRWE and 42 percent of those with BWE.



SOURCE: Table 15.

Chart 10.
Percentage distribution, by diagnostic group and provision, December 2005

The most frequently identified diagnosis varied among recipients who had income excluded under plans for achieving self-support (PASS), impairment-related work expenses (IRWE), or blind work expenses (BWE). Over half of the recipients who had some income excluded under IRWE were mentally retarded, and 41 percent of those with a PASS had other mental disorders. Over four-fifths of those with BWE had a nervous system disorder.



SOURCE: Table 16.

Table 14.
Number, by state or other area and provision, December 2005

State or area	Plans for achieving self-support (PASS) ^a	Impairment-related work expenses (IRWE)	Blind work expenses (BWE)
All areas	1,582	6,310	2,552
Alabama	25	159	26
Alaska	7	4	b
Arizona	15	72	29
Arkansas	27	58	20
California	414	475	397
Colorado	17	27	30
Connecticut	9	130	23
Delaware	0	29	9
District of Columbia	0	b	4
Florida	35	352	99
Georgia	27	206	50
Hawaii	9	10	10
Idaho	28	10	b
Illinois	31	210	55
Indiana	16	105	44
Iowa	33	51	58
Kansas	20	329	28
Kentucky	63	89	38
Louisiana	b	110	34
Maine	38	30	12
Maryland	26	181	38
Massachusetts	80	168	212
Michigan	41	113	87
Minnesota	35	106	49
Mississippi	8	30	32
Missouri	20	134	38
Montana	24	8	9
Nebraska	20	22	10
Nevada	6	24	14
New Hampshire	10	22	8
New Jersey	3	198	47
New Mexico	4	61	13
New York	80	479	202
North Carolina	69	329	111
North Dakota	3	8	3
Ohio	35	110	89
Oklahoma	7	79	20
Oregon	27	36	30
Pennsylvania	19	289	103
Rhode Island	8	11	9

(Continued)

Table 14.
Number, by state or other area and provision, December 2005—Continued

State or area	Plans for achieving self-support (PASS) ^a	Impairment-related work expenses (IRWE)	Blind work expenses (BWE)
South Carolina	16	66	30
South Dakota	12	13	5
Tennessee	19	121	36
Texas	24	306	177
Utah	3	46	13
Vermont	27	7	4
Virginia	14	482	62
Washington	41	104	42
West Virginia	8	31	16
Wisconsin	75	265	72
Wyoming	b	4	b
Outlying area			
Northern Mariana Islands	b	b	b

SOURCE: Social Security Administration, Supplemental Security Record (Characteristic Extract Record format), 100 percent data.

a. Includes 400 persons with a PASS that excludes only resources.

b. Data are not shown to avoid disclosure of information for particular individuals.

CONTACT: Clark Pickett (410) 965-9016 or ssi.workers@ssa.gov.

Table 15.
Number, by selected characteristics and provision, December 2005

Characteristic	Plans for achieving self-support (PASS) ^a	Impairment-related work expenses (IRWE)	Blind work expenses (BWE)
Total	1,582	6,310	2,552
Age			
Under 18	3	5	4
18–21	65	312	111
22–29	321	2,042	619
30–39	345	1,874	723
40–49	482	1,254	598
50–59	312	588	366
60–64	46	133	73
65 or older	8	102	58
Sex			
Male	644	3,446	1,370
Female	938	2,864	1,182
Earned income^b			
Wages	409	6,233	2,481
Self-employment	99	101	94
Earnings (dollars)			
None	1,089	0	0
65 or less	22	499	173
66–99	7	256	82
100–199	36	932	240
200–299	35	828	200
300–399	46	734	161
400–499	28	636	145
500–599	38	568	142
600–699	40	383	114
700–799	35	299	97
800–899	29	199	114
900–999	26	152	102
1,000 or more	151	824	982
Unearned income^b			
None	297	2,700	1,311
Social Security	1,240	3,259	1,107
Other pensions	13	35	10
Income based on need	0	c	c
Asset income	68	433	170
Other	56	198	73

SOURCE: Social Security Administration, Supplemental Security Record (Characteristic Extract Record format), 100 percent data.

a. Includes 400 persons with a PASS that excludes only resources.

b. The sum of the entries may be greater than the total because some recipients may receive more than one type of earned or unearned income or both earned and unearned income.

c. Data are not shown to avoid disclosure of information for particular individuals.

CONTACT: Clark Pickett (410) 965-9016 or ssi.workers@ssa.gov.

Table 16.
Percentage distribution, by diagnostic group and provision, December 2005

Diagnostic group	All blind and disabled recipients	Plans for achieving self-support (PASS) ^a	Impairment-related work expenses (IRWE)	Blind work expenses (BWE)
Total				
Number	4,082,870	1,582	6,310	2,552
Percent	100.0	100.0	100.0	100.0
Congenital anomalies	0.6	0.9	2.4	1.3
Endocrine, nutritional, and metabolic diseases	3.5	2.3	0.5	0.2
Infectious and parasitic diseases	1.6	1.8	0.7	0.2
Injuries	2.6	6.0	2.1	0
Mental disorders				
Retardation	21.7	4.4	53.5	2.0
Schizophrenia	9.9	9.1	3.4	0
Other	26.1	31.4	9.7	0.3
Neoplasms	1.1	1.1	0.3	0.2
Diseases of the—				
Blood and blood-forming organs	0.4	0.4	0.1	0
Circulatory system	4.5	1.2	0.7	1.2
Digestive system	0.9	0.9	0.1	0.1
Genitourinary system	1.0	0.6	0.3	0.1
Musculoskeletal system and connective tissue	10.2	7.3	1.4	0.1
Nervous system and sense organs ^b	7.8	13.1	12.5	82.2
Respiratory system	2.1	0.4	0.3	0
Skin and subcutaneous tissue	0.2	0	0	0
Other	0.2	0.3	0.3	0.1
Unknown	5.6	18.7	11.5	12.0

SOURCE: Social Security Administration, Supplemental Security Record (Characteristic Extract Record format), 100 percent data.

a. Includes 400 persons with a PASS that excludes only resources.

b. Most disabled recipients classified as blind are included in this category. A few blind recipients with a primary impairment other than diseases of the eye are coded in other categories. Also, a few recipients are classified with diseases of the eye, but their impairment does not meet the definition of blindness.

CONTACT: Clark Pickett (410) 965-9016 or ssi.workers@ssa.gov.

Table 17.
Percentage distribution of persons with income excluded, by amount excluded and provision,
December 2005

Amount excluded (dollars)	Plans for achieving self-support (PASS) ^a	Impairment-related work expenses (IRWE)	Blind work expenses (BWE)
Total			
Number	1,182	6,310	2,552
Percent	100.0	100.0	100.0
Under 25	0.3	18.9	18.1
25–49	1.0	23.6	10.6
50–99	1.7	32.5	14.6
100–199	5.2	15.4	18.6
200–299	8.1	4.4	11.2
300–499	21.7	3.4	12.8
500–999	49.3	1.5	10.6
1,000 or more	12.5	0.3	3.3

SOURCE: Social Security Administration, Supplemental Security Record (Characteristic Extract Record format), 100 percent data.

a. Data do not include plans for achieving self-support that exclude only resources.

CONTACT: Clark Pickett (410) 965-9016 or ssi.workers@ssa.gov.