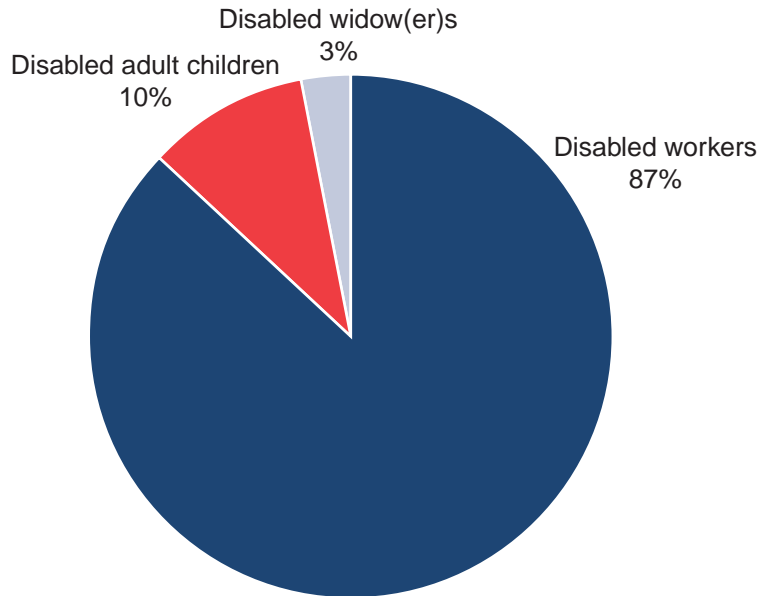


Chart 1.

All Social Security disabled beneficiaries in current-payment status, December 2006

In December 2006, about 7.8 million people received Social Security disability benefits as disabled workers, disabled widow(er)s, or disabled adult children. The majority (87 percent) were disabled workers, 10 percent were disabled adult children, and 3 percent were disabled widow(er)s.



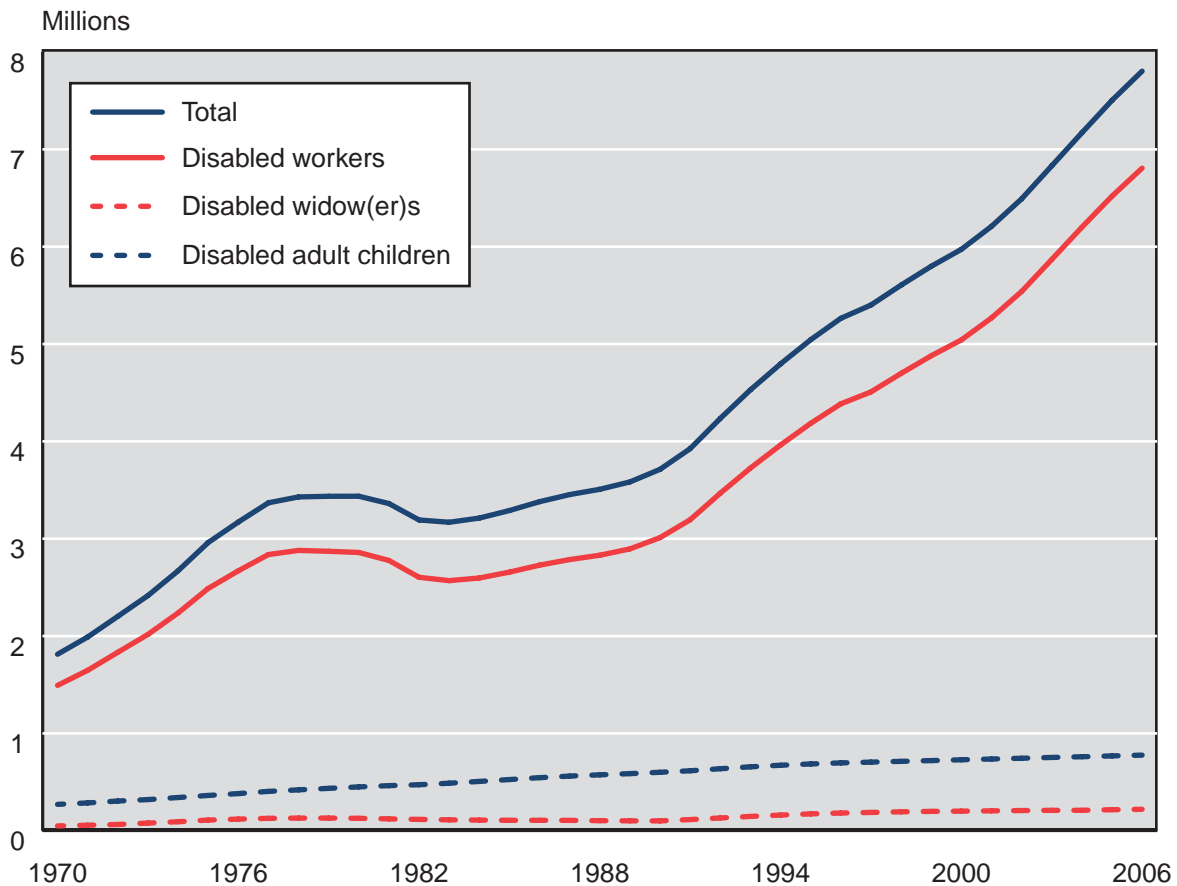
SOURCE: Table 3.

Beneficiaries in Current-Payment Status

Chart 2.

All Social Security disabled beneficiaries in current-payment status, December 1970–2006

The number of disabled workers grew steadily until 1978, declined slightly until 1983, started to increase again in 1984, and began to increase more rapidly beginning in 1990. The growth in the 1980s and 1990s was the result of demographic changes, a recession, and legislative changes. The number of disabled adult children has grown slightly, and the number of disabled widow(er)s has remained fairly level. In December 2006, more than 6.8 million disabled workers, nearly 777,000 disabled adult children, and just over 220,000 disabled widow(er)s received disability benefits.

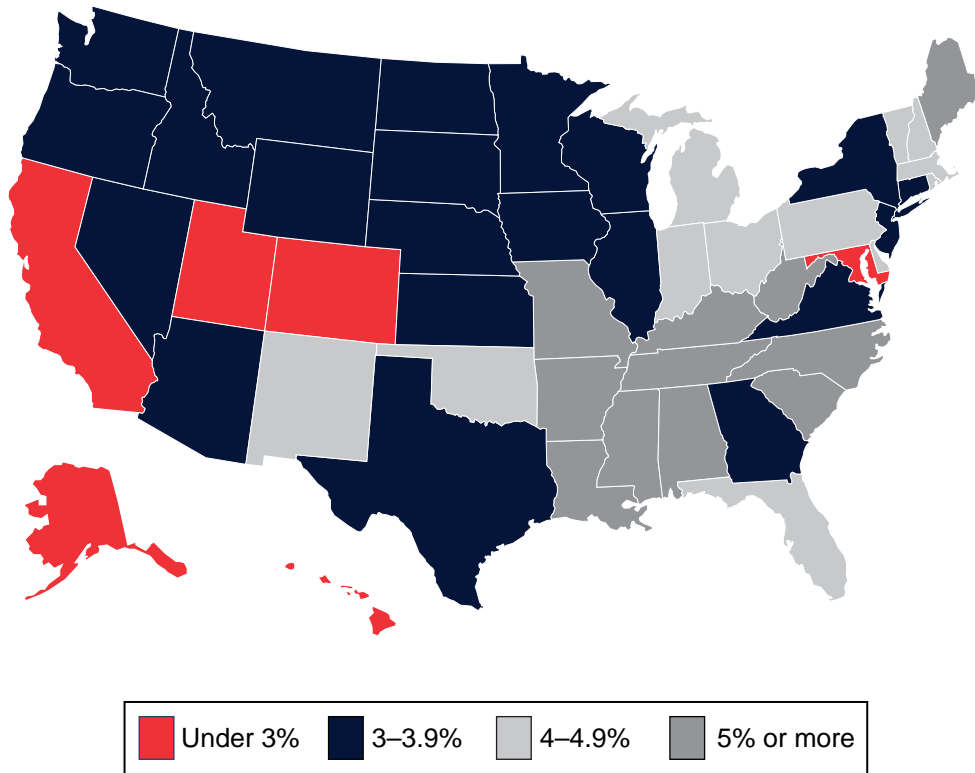


SOURCE: Table 3.

Chart 3.

Disabled beneficiaries aged 18–64 in current-payment status as a percentage of state population aged 18–64, December 2006

Disabled beneficiaries aged 18–64 in current-payment status accounted for about 3.9 percent of the population aged 18–64 in the United States. In 6 states and the District of Columbia, they represented less than 3 percent of the state population. The states with the highest rates of disabled beneficiaries—5 percent or more—were Alabama, Arkansas, Kentucky, Louisiana, Maine, Mississippi, Missouri, North Carolina, South Carolina, Tennessee, and West Virginia.



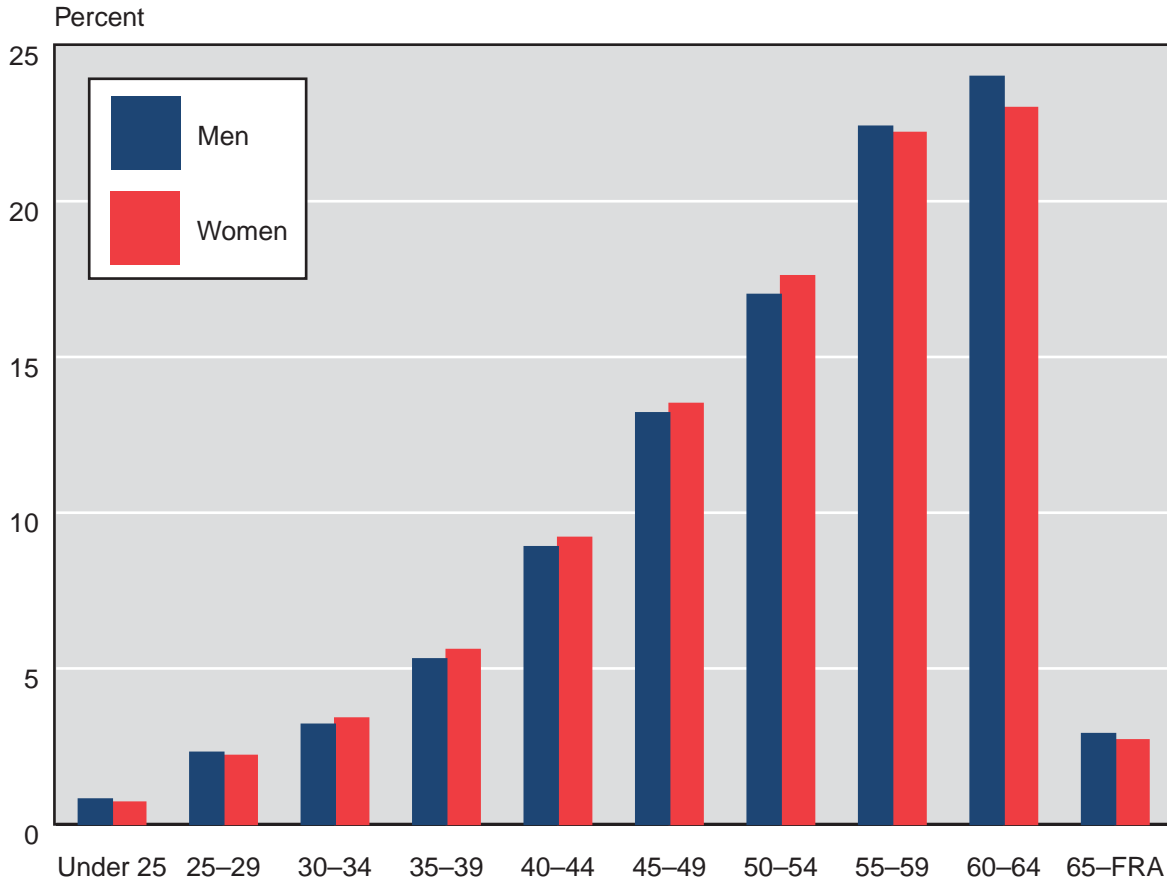
SOURCE: Table 8.

Beneficiaries in Current-Payment Status

Chart 4.

Age of disabled-worker beneficiaries in current-payment status, by sex, December 2006

The percentage of disabled-worker beneficiaries increases with age for both men and women. In December 2006, the largest percentage of disabled-worker beneficiaries was aged 60–64. Disability benefits convert to retirement benefits when the worker reaches full retirement age, 65–67, depending on the year of birth.



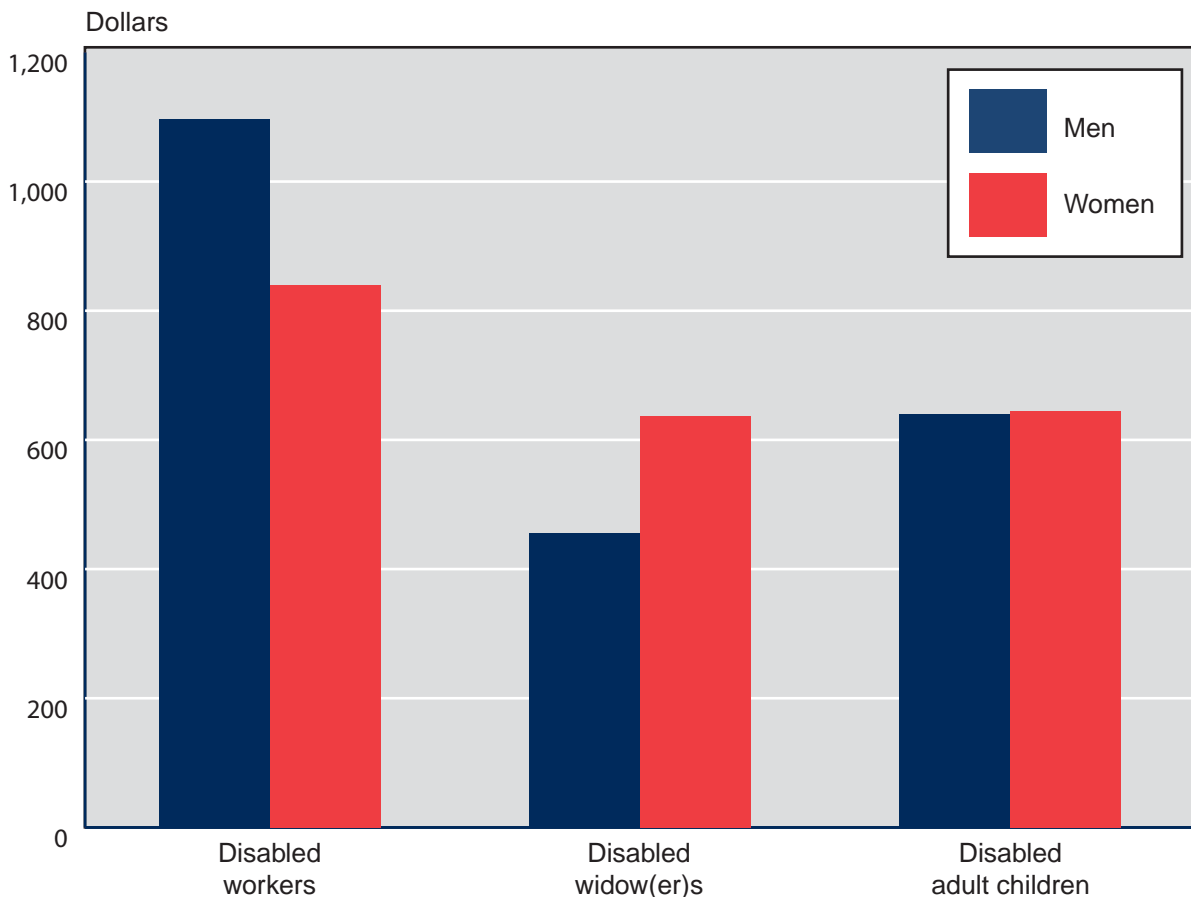
SOURCE: Table 4.

NOTE: FRA = full retirement age.

Chart 5.**Average monthly benefit of disabled beneficiaries in current-payment status, by sex, December 2006**

The average monthly benefit for disabled-worker beneficiaries is higher than that paid to disabled widow(er)s or disabled adult children. The reason for the difference is that disabled workers receive 100 percent of the primary insurance amount (PIA), compared with 71.5 percent for disabled widow(er)s and 50 percent for disabled adult children (if the worker is disabled or retired) or 75 percent (if the worker is deceased).

Because men have traditionally had higher earnings than women, their monthly benefit is higher. This is most obvious in the disabled-worker group. Benefits for disabled widow(er)s and disabled adult children are dependents' benefits, so their monthly benefit is a function of the worker's earnings. Therefore, a disabled widow's average benefit tends to be higher than that of a disabled widower because a male worker's earnings are higher than a female worker's. Benefit amounts are about the same for men and women in the disabled adult children group.



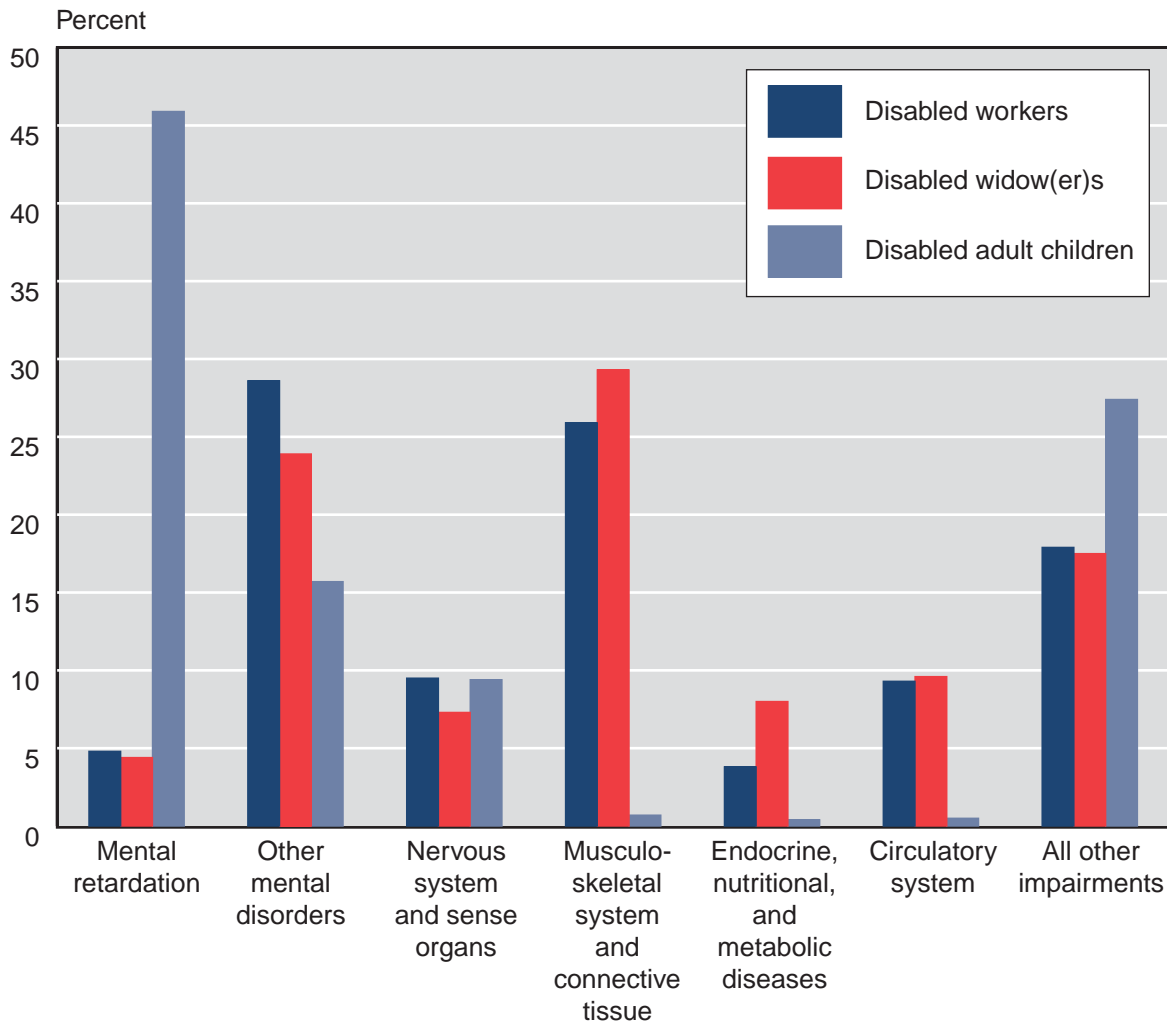
SOURCE: Table 4.

Beneficiaries in Current-Payment Status

Chart 6.

Disabled beneficiaries in current-payment status, by diagnostic group, December 2006

The impairment on which disability is based varies with the type of beneficiary. In December 2006, a mental disorder other than retardation was the primary reason disabled workers received benefits; diseases of the musculoskeletal system and connective tissue were the leading cause of disability among disabled widow(er)s; and mental retardation was the predominant reason for disability among disabled adult children.



SOURCE: Table 6.

Disabled Beneficiaries and Nondisabled Dependents

Table 1.
Number, December 1960–2006, selected years

Year	Total	Workers and nondisabled dependents				Widow(er)s	Adult children of—		
		Workers	Spouses	Children under age 18	Students aged 18–19		Disabled workers	Retired workers	Deceased workers
1960	788,543	455,371	76,599	152,519	2,962	53,825	47,267
1965	1,928,460	988,074	193,362	532,197	16,437	...	8,981	87,122	102,287
1970	2,970,538	1,492,948	283,447	799,111	75,194	49,281	14,295	101,341	154,921
1975	4,799,853	2,488,774	452,922	1,239,058	147,253	109,511	24,193	118,802	219,340
1980	5,223,311	2,858,680	461,878	1,184,846	140,157	127,580	32,883	140,548	276,739
1981	5,008,221	2,776,519	428,212	1,070,000	148,879	121,590	32,664	143,633	286,724
1982	4,532,014	2,603,599	365,862	894,440	79,333	116,372	30,027	144,464	297,917
1983	4,382,745	2,569,029	308,059	855,560	50,134	111,591	30,209	148,464	309,699
1984	4,406,140	2,596,516	303,982	858,243	31,875	109,151	31,165	152,667	322,541
1985	4,507,083	2,656,638	305,532	889,730	22,336	107,005	33,078	157,011	335,753
1986	4,613,249	2,728,463	300,826	911,698	20,245	106,974	34,641	161,755	348,647
1987	4,676,852	2,785,859	290,888	912,367	20,183	106,282	35,378	165,675	360,220
1988	4,709,360	2,821,070	280,780	898,980	24,370	105,810	35,520	170,940	371,890
1989	4,774,160	2,886,590	269,830	901,400	23,330	102,650	35,950	172,650	381,760
1990	4,934,370	3,011,130	264,230	929,720	23,960	101,780	36,990	174,560	392,000
1991	5,209,600	3,198,610	263,780	986,710	26,380	115,010	38,450	177,740	402,920
1992	5,633,130	3,473,330	271,510	1,090,920	25,930	131,620	41,720	181,860	416,240
1993	6,026,460	3,729,330	272,190	1,188,330	29,660	148,070	44,920	185,270	428,690
1994	6,381,470	3,966,590	270,220	1,276,740	29,910	161,650	48,650	187,630	440,080
1995	6,674,450	4,186,720	263,130	1,331,110	29,550	173,240	51,790	188,940	449,970
1996	6,906,420	4,386,040	223,300	1,381,200	32,820	182,020	53,470	190,050	457,520
1997	6,998,210	4,505,760	207,290	1,357,340	31,440	187,220	53,760	190,410	464,990
1998	7,192,370	4,697,010	190,120	1,363,910	30,780	192,400	55,690	189,930	472,530
1999	7,391,920	4,873,560	176,370	1,381,200	37,020	197,520	57,360	189,820	479,070
2000	7,550,930	5,035,840	164,850	1,381,500	35,000	200,130	58,090	191,950	483,570
2001	7,790,038	5,268,039	156,978	1,385,374	38,839	204,255	57,920	191,817	486,816
2002	8,109,332	5,539,597	151,626	1,422,296	43,916	207,365	59,460	192,087	492,985
2003	8,490,007	5,868,541	150,889	1,461,635	46,769	209,360	62,450	191,704	498,659
2004	8,854,343	6,197,385	152,995	1,486,422	47,551	210,736	64,739	191,274	503,241
2005	9,224,458	6,519,001	156,552	1,516,519	47,982	215,866	68,705	191,872	507,961
2006	9,536,997	6,806,918	153,456	1,530,254	49,595	220,178	71,878	192,122	512,596

SOURCES: Social Security Administration. For years before 2001, *Annual Statistical Supplement to the Social Security Bulletin*, based on the Master Beneficiary Record, various sampling rates; beginning with 2001, Disabled Beneficiaries and Dependents Master Beneficiary Record file, 100 percent data.

NOTE: ... = not applicable.

CONTACT: Kevin Kulzer (410) 965-5366 or di.asr@ssa.gov.

Disabled Beneficiaries and Nondisabled Dependents

Table 2.
Average monthly benefit, by basis of entitlement, age, and sex, December 2006

Basis of entitlement and age	Total		Male		Female	
	Number	Average monthly benefit (dollars)	Number	Average monthly benefit (dollars)	Number	Average monthly benefit (dollars)
Workers						
Total	6,806,918	977.70	3,643,121	1,097.40	3,163,797	839.80
Under 25	51,087	523.20	30,025	532.60	21,062	509.70
25-29	152,645	639.70	84,002	653.30	68,643	623.10
30-34	222,689	724.80	115,225	745.80	107,464	702.30
35-39	371,383	795.80	193,448	824.90	177,935	764.20
40-44	612,792	852.20	322,473	897.10	290,319	802.40
45-49	907,840	916.10	481,243	987.60	426,597	835.30
50-54	1,176,131	986.50	619,124	1,094.20	557,007	866.70
55-59	1,516,025	1,057.30	814,662	1,206.10	701,363	884.40
60-64	1,603,734	1,090.10	875,885	1,278.90	727,849	862.90
65-FRA	192,592	1,082.80	107,034	1,279.00	85,558	837.20
Spouses of disabled workers						
Total	153,456	257.80	4,900	208.30	148,556	259.40
Entitlement based on care						
of children	82,932	203.90	1,750	163.00	81,182	204.80
Under 30	5,342	134.50	41	121.30	5,301	134.60
30-34	9,455	144.80	129	128.60	9,326	145.10
35-39	15,945	164.80	246	138.50	15,699	165.30
40-44	19,006	198.70	416	142.10	18,590	199.90
45-49	16,339	229.60	371	171.80	15,968	230.90
50-54	9,790	259.10	297	179.40	9,493	261.60
55-FRA	7,055	302.20	250	214.10	6,805	305.40
Entitlement based on age						
62-64	70,524	321.10	3,150	233.40	67,374	325.20
65 or older	40,641	307.90	804	182.80	39,837	310.40
	29,883	339.10	2,346	250.70	27,537	346.70
Children of disabled workers						
Total	1,651,727	290.40	857,286	291.70	794,441	289.10
Under age 18						
Under 5	1,530,254	281.20	787,550	281.30	742,704	281.20
5-9	119,471	229.30	60,959	228.70	58,512	230.00
10-14	320,089	238.20	163,356	237.40	156,733	239.00
15-17	576,887	271.30	296,492	271.40	280,395	271.20
	513,807	331.30	266,743	331.30	247,064	331.30
Students aged 18-19	49,595	400.50	28,544	406.70	21,051	392.00
Disabled aged 18 or older	71,878	410.10	41,192	409.50	30,686	410.90
Widow(er)s						
Total	220,178	630.70	8,115	455.00	212,063	637.40
50-54	28,571	630.20	1,334	451.30	27,237	638.90
55-59	79,169	634.60	3,482	450.70	75,687	643.00
60-64	106,575	628.40	3,185	461.40	103,390	633.60
65-FRA	5,863	621.10	114	451.60	5,749	624.50

(Continued)

Disabled Beneficiaries and Nondisabled Dependents

Table 2.
Average monthly benefit, by basis of entitlement, age, and sex, December 2006—Continued

Basis of entitlement and age	Total		Male		Female	
	Number	Average monthly benefit (dollars)	Number	Average monthly benefit (dollars)	Number	Average monthly benefit (dollars)
Adult children						
Total	776,596	642.40	424,184	640.20	352,412	645.00
Children of—						
Disabled workers	71,878	410.10	41,192	409.50	30,686	410.90
Retired workers	192,122	554.40	106,540	552.00	85,582	557.40
Deceased workers	512,596	708.00	276,452	708.60	236,144	707.20
Under 25	79,171	541.00	46,161	541.80	33,010	539.70
25–29	65,483	589.80	37,050	591.70	28,433	587.30
30–34	69,143	620.60	38,941	619.10	30,202	622.60
35–39	85,162	649.60	47,713	646.70	37,449	653.20
40–44	107,121	664.40	60,517	662.50	46,604	666.70
45–49	107,277	677.40	59,997	675.70	47,280	679.70
50–54	86,403	686.60	47,208	683.90	39,195	689.90
55–59	63,110	687.90	33,155	685.50	29,955	690.50
60–64	44,066	677.80	22,202	670.60	21,864	685.20
65 or older	69,660	613.90	31,240	612.40	38,420	615.00

SOURCE: Social Security Administration, Disabled Beneficiaries and Dependents Master Beneficiary Record file, 100 percent data.

NOTE: FRA = full retirement age.

CONTACT: Kevin Kulzer (410) 965-5366 or di.asr@ssa.gov.

All Disabled Beneficiaries

Table 3.
Number, average, and total monthly benefits, December 1960–2006

Year	Number				Average monthly benefit (dollars)			Total monthly benefits (thousands of dollars)		
	Total	Workers	Widow(er)s	Adult children	Workers	Widow(er)s	Adult children	Workers	Widow(er)s	Adult children
1960	559,425	455,371	...	104,054	89.31	...	44.15	40,669	...	4,594
1961	742,296	618,075	...	124,221	89.59	...	45.28	55,373	...	5,625
1962	888,131	740,867	...	147,264	89.99	...	45.67	66,671	...	6,726
1963	993,656	827,014	...	166,642	90.59	...	46.45	74,919	...	7,741
1964	1,077,695	894,173	...	183,522	91.12	...	47.35	81,477	...	8,690
1965	1,186,464	988,074	...	198,390	97.76	...	51.77	96,594	...	10,271
1966	1,310,911	1,097,190	...	213,721	98.09	...	52.42	107,623	...	11,203
1967	1,422,778	1,193,120	...	229,658	98.43	...	53.41	117,439	...	12,266
1968	1,560,517	1,295,300	21,563	243,654	111.86	72.25	61.83	144,892	1,558	15,065
1969	1,690,982	1,394,291	39,469	257,222	112.74	71.02	62.79	157,192	2,803	16,151
1970	1,812,786	1,492,948	49,281	270,557	131.26	82.00	73.21	195,964	4,041	19,807
1971	1,990,098	1,647,684	56,743	285,671	146.52	90.11	81.37	241,419	5,113	23,245
1972	2,202,090	1,832,916	64,167	305,007	179.32	109.54	98.81	328,678	7,029	30,138
1973	2,415,383	2,016,626	78,769	319,988	183.00	111.14	100.14	369,043	8,754	32,044
1974	2,670,092	2,236,882	92,128	341,082	205.70	125.87	112.45	460,127	11,596	38,355
1975	2,960,620	2,488,774	109,511	362,335	225.90	137.70	122.80	562,214	15,080	44,495
1976	3,171,198	2,670,208	119,427	381,563	245.17	147.01	132.32	654,655	17,557	50,488
1977	3,368,954	2,837,432	127,276	404,246	265.30	156.11	142.12	752,771	19,869	57,451
1978	3,429,421	2,879,774	129,751	419,896	288.30	165.46	153.66	830,239	21,469	64,521
1979	3,435,761	2,870,590	129,833	435,338	322.00	180.52	171.55	924,330	23,437	74,682
1980	3,436,429	2,858,680	127,580	450,169	370.70	205.02	198.95	1,059,713	26,156	89,561
1981	3,361,130	2,776,519	121,590	463,021	413.20	226.58	224.51	1,147,258	27,550	103,953
1982	3,192,379	2,603,599	116,372	472,408	440.60	242.11	245.07	1,147,146	28,175	115,773
1983	3,168,992	2,569,029	111,591	488,372	456.20	250.33	257.78	1,171,991	27,935	125,893
1984	3,212,040	2,596,516	109,151	506,373	470.70	306.24	270.28	1,222,180	33,426	136,862
1985	3,289,485	2,656,638	107,005	525,842	483.80	315.26	281.92	1,285,281	33,734	148,245
1986	3,380,480	2,728,463	106,974	545,043	487.90	319.74	288.79	1,331,217	34,204	157,403
1987	3,453,414	2,785,859	106,282	561,273	508.20	333.89	304.32	1,415,774	35,486	170,807
1988	3,507,707	2,830,284	103,123	574,300	529.50	348.05	320.21	1,498,635	35,892	183,897
1989	3,583,451	2,895,364	101,630	586,457	556.00	366.72	339.47	1,609,822	37,270	199,085
1990	3,712,763	3,011,294	100,989	600,480	587.20	388.93	361.71	1,768,232	39,278	217,200
1991	3,925,472	3,194,938	114,489	616,045	609.40	406.96	378.86	1,946,995	46,592	233,395
1992	4,236,080	3,467,783	131,324	636,973	626.10	422.65	393.61	2,171,179	55,504	250,719
1993	4,529,466	3,725,966	147,015	656,485	641.70	434.20	407.20	2,390,952	63,834	267,321
1994	4,796,313	3,962,954	160,676	672,683	661.40	446.30	422.40	2,621,098	71,710	284,141

(Continued)

Table 3.
Number, average, and total monthly benefits, December 1960–2006—Continued

Year	Number				Average monthly benefit (dollars)			Total monthly benefits (thousands of dollars)		
	Total	Workers	Widow(er)s	Adult children	Workers	Widow(er)s	Adult children	Workers	Widow(er)s	Adult children
1995	5,044,388	4,185,263	173,024	686,101	681.60	458.30	437.30	2,853,512	79,297	300,032
1996	5,264,321	4,385,623	181,911	696,787	703.90	471.00	454.30	3,087,040	85,680	316,550
1997	5,400,781	4,508,134	187,938	704,709	721.60	480.40	468.60	3,253,069	90,285	330,227
1998	5,605,272	4,698,319	194,181	712,772	733.10	487.30	479.40	3,444,338	94,624	341,703
1999	5,798,776	4,879,455	198,795	720,526	754.10	499.90	495.60	3,679,597	99,378	357,093
2000	5,972,468	5,042,333	201,446	728,689	786.40	519.70	518.30	3,965,291	104,681	377,650
2001	6,208,847	5,268,039	204,255	736,553	814.40	536.70	537.60	4,290,449	109,622	395,956
2002	6,491,494	5,539,597	207,365	744,532	834.30	548.10	550.40	4,621,852	113,653	409,813
2003	6,830,714	5,868,541	209,360	752,813	861.60	563.80	567.00	5,054,332	118,010	426,780
2004	7,167,375	6,197,385	210,736	759,254	894.10	582.70	587.60	5,540,703	122,795	446,096
2005	7,503,405	6,519,001	215,866	768,538	938.00	609.30	616.30	6,113,106	131,508	473,545
2006	7,803,692	6,806,918	220,178	776,596	977.70	630.70	642.40	6,655,048	138,859	498,891

SOURCES: Social Security Administration. For years before 2000, *Annual Statistical Supplement to the Social Security Bulletin*, based on the Master Beneficiary Record, various sampling rates; for 2000, Social Security Disability Insurance Beneficiaries, 100 percent data; beginning with 2001, Disabled Beneficiaries and Dependents Master Beneficiary Record file, 100 percent data.

NOTE: . . . = not applicable.

CONTACT: Kevin Kulzer (410) 965-5366 or di.asr@ssa.gov.

All Disabled Beneficiaries

Table 4.
Number and average monthly benefit, by sex and age, December 2006

Age	Total		Workers		Widow(er)s		Adult children	
	Number	Average monthly benefit (dollars)	Number	Average monthly benefit (dollars)	Number	Average monthly benefit (dollars)	Number	Average monthly benefit (dollars)
All disabled beneficiaries								
Total	7,803,692	934.50	6,806,918	977.70	220,178	630.70	776,596	642.40
Under 25	130,258	534.00	51,087	523.20	79,171	541.00
25-29	218,128	624.70	152,645	639.70	65,483	589.80
30-34	291,832	700.20	222,689	724.80	69,143	620.60
35-39	456,545	768.50	371,383	795.80	85,162	649.60
40-44	719,913	824.30	612,792	852.20	107,121	664.40
45-49	1,015,117	890.80	907,840	916.10	107,277	677.40
50-54	1,291,105	958.50	1,176,131	986.50	28,571	630.20	86,403	686.60
55-59	1,658,304	1,023.00	1,516,025	1,057.30	79,169	634.60	63,110	687.90
60-64	1,754,375	1,051.70	1,603,734	1,090.10	106,575	628.40	44,066	677.80
65-FRA ^a	268,115	950.80	192,592	1,082.80	5,863	621.10	69,660	613.90
Men								
Subtotal	4,075,420	1,048.60	3,643,121	1,097.40	8,115	455.00	424,184	640.20
Under 25	76,186	538.20	30,025	532.60	46,161	541.80
25-29	121,052	634.50	84,002	653.30	37,050	591.70
30-34	154,166	713.80	115,225	745.80	38,941	619.10
35-39	241,161	789.60	193,448	824.90	47,713	646.70
40-44	382,990	860.00	322,473	897.10	60,517	662.50
45-49	541,240	953.00	481,243	987.60	59,997	675.70
50-54	667,666	1,063.90	619,124	1,094.20	1,334	451.30	47,208	683.90
55-59	851,299	1,182.80	814,662	1,206.10	3,482	450.70	33,155	685.50
60-64	901,272	1,261.00	875,885	1,278.90	3,185	461.40	22,202	670.60
65-FRA ^a	138,388	1,127.90	107,034	1,279.00	114	451.60	31,240	612.40
Women								
Subtotal	3,728,272	809.90	3,163,797	839.80	212,063	637.40	352,412	645.00
Under 25	54,072	528.00	21,062	509.70	33,010	539.70
25-29	97,076	612.60	68,643	623.10	28,433	587.30
30-34	137,666	684.80	107,464	702.30	30,202	622.60
35-39	215,384	744.90	177,935	764.20	37,449	653.20
40-44	336,923	783.60	290,319	802.40	46,604	666.70
45-49	473,877	819.80	426,597	835.30	47,280	679.70
50-54	623,439	845.70	557,007	866.70	27,237	638.90	39,195	689.90
55-59	807,005	854.50	701,363	884.40	75,687	643.00	29,955	690.50
60-64	853,103	830.60	727,849	862.90	103,390	633.60	21,864	685.20
65-FRA ^a	129,727	762.00	85,558	837.20	5,749	624.50	38,420	615.00

SOURCE: Social Security Administration, Disabled Beneficiaries and Dependents Master Beneficiary Record file, 100 percent data.

NOTE: ... = not applicable; FRA = full retirement age.

a. FRA applies only to workers and widow(er)s. There is no age limit for adult children.

CONTACT: Kevin Kulzer (410) 965-5366 or di.asr@ssa.gov.

Table 5.
Distribution, by sex and monthly benefit, December 2006

Sex and monthly benefit (dollars)	Total		Workers		Widow(er)s		Adult children	
	Number	Percent	Number	Percent	Number	Percent	Number	Percent
All disabled beneficiaries								
Total	7,803,692	100.0	6,806,918	100.0	220,178	100.0	776,596	100.0
Less than 300.00	298,619	3.8	180,032	2.6	37,093	16.8	81,494	10.5
300.00–399.90	312,994	4.0	211,606	3.1	20,864	9.5	80,524	10.4
400.00–499.90	379,739	4.9	258,301	3.8	26,420	12.0	95,018	12.2
500.00–599.90	630,276	8.1	505,908	7.4	26,027	11.8	98,341	12.7
600.00–699.90	904,431	11.6	784,086	11.5	23,729	10.8	96,616	12.4
700.00–799.90	888,209	11.4	761,848	11.2	20,736	9.4	105,625	13.6
800.00–899.90	776,184	9.9	681,910	10.0	17,320	7.9	76,954	9.9
900.00–999.90	665,887	8.5	595,304	8.7	14,120	6.4	56,463	7.3
1,000.00–1,099.90	566,372	7.3	511,034	7.5	12,480	5.7	42,858	5.5
1,100.00–1,199.90	465,537	6.0	431,165	6.3	9,097	4.1	25,275	3.3
1,200.00–1,299.90	376,018	4.8	360,083	5.3	6,669	3.0	9,266	1.2
1,300.00–1,399.90	313,028	4.0	304,977	4.5	3,723	1.7	4,328	0.6
1,400.00–1,499.90	290,685	3.7	287,291	4.2	1,555	0.7	1,839	0.2
1,500.00–1,599.90	252,404	3.2	251,129	3.7	272	0.1	1,003	0.1
1,600.00–1,699.90	209,802	2.7	209,390	3.1	23	a	389	0.1
1,700.00–1,799.90	203,147	2.6	202,948	3.0	11	a	188	a
1,800.00 or more	270,360	3.5	269,906	4.0	39	a	415	0.1
Men								
Subtotal	4,075,420	100.0	3,643,121	100.0	8,115	100.0	424,184	100.0
Less than 300.00	105,879	2.6	56,576	1.6	2,859	35.2	46,444	10.9
300.00–399.90	113,982	2.8	69,347	1.9	896	11.0	43,739	10.3
400.00–499.90	141,156	3.5	88,031	2.4	1,097	13.5	52,028	12.3
500.00–599.90	241,428	5.9	186,925	5.1	1,001	12.3	53,502	12.6
600.00–699.90	360,202	8.8	307,402	8.4	705	8.7	52,095	12.3
700.00–799.90	390,405	9.6	332,965	9.1	521	6.4	56,919	13.4
800.00–899.90	370,241	9.1	328,104	9.0	361	4.4	41,776	9.8
900.00–999.90	342,467	8.4	311,315	8.5	223	2.7	30,929	7.3
1,000.00–1,099.90	312,682	7.7	289,138	7.9	180	2.2	23,364	5.5
1,100.00–1,199.90	277,336	6.8	263,431	7.2	122	1.5	13,783	3.2
1,200.00–1,299.90	241,321	5.9	236,165	6.5	77	0.9	5,079	1.2
1,300.00–1,399.90	214,328	5.3	211,840	5.8	58	0.7	2,430	0.6
1,400.00–1,499.90	211,038	5.2	210,015	5.8	9	0.1	1,014	0.2
1,500.00–1,599.90	192,489	4.7	191,930	5.3	5	0.1	554	0.1
1,600.00–1,699.90	164,984	4.0	164,769	4.5	0	0	215	0.1
1,700.00–1,799.90	163,638	4.0	163,539	4.5	0	0	99	a
1,800.00 or more	231,844	5.7	231,629	6.4	1	a	214	0.1

(Continued)

All Disabled Beneficiaries

Table 5.
Distribution, by sex and monthly benefit, December 2006—Continued

Sex and monthly benefit (dollars)	Total		Workers		Widow(er)s		Adult children	
	Number	Percent	Number	Percent	Number	Percent	Number	Percent
Women								
Subtotal	3,728,272	100.0	3,163,797	100.0	212,063	100.0	352,412	100.0
Less than 300.00	192,740	5.2	123,456	3.9	34,234	16.1	35,050	9.9
300.00–399.90	199,012	5.3	142,259	4.5	19,968	9.4	36,785	10.4
400.00–499.90	238,583	6.4	170,270	5.4	25,323	11.9	42,990	12.2
500.00–599.90	388,848	10.4	318,983	10.1	25,026	11.8	44,839	12.7
600.00–699.90	544,229	14.6	476,684	15.1	23,024	10.9	44,521	12.6
700.00–799.90	497,804	13.4	428,883	13.6	20,215	9.5	48,706	13.8
800.00–899.90	405,943	10.9	353,806	11.2	16,959	8.0	35,178	10.0
900.00–999.90	323,420	8.7	283,989	9.0	13,897	6.6	25,534	7.2
1,000.00–1,099.90	253,690	6.8	221,896	7.0	12,300	5.8	19,494	5.5
1,100.00–1,199.90	188,201	5.0	167,734	5.3	8,975	4.2	11,492	3.3
1,200.00–1,299.90	134,697	3.6	123,918	3.9	6,592	3.1	4,187	1.2
1,300.00–1,399.90	98,700	2.6	93,137	2.9	3,665	1.7	1,898	0.5
1,400.00–1,499.90	79,647	2.1	77,276	2.4	1,546	0.7	825	0.2
1,500.00–1,599.90	59,915	1.6	59,199	1.9	267	0.1	449	0.1
1,600.00–1,699.90	44,818	1.2	44,621	1.4	23	a	174	a
1,700.00–1,799.90	39,509	1.1	39,409	1.2	11	a	89	a
1,800.00 or more	38,516	1.0	38,277	1.2	38	a	201	0.1

SOURCE: Social Security Administration, Disabled Beneficiaries and Dependents Master Beneficiary Record file, 100 percent data.

a. Less than 0.05 percent.

CONTACT: Kevin Kulzer (410) 965-5366 or di.asr@ssa.gov.

Table 6.
Distribution, by sex and diagnostic group, December 2006

Diagnostic group	Total		Workers		Widow(er)s		Adult children	
	Number	Percent	Number	Percent	Number	Percent	Number	Percent
All disabled beneficiaries								
Total	7,803,692	100.0	6,806,918	100.0	220,178	100.0	776,596	100.0
Congenital anomalies	21,125	0.3	11,544	0.2	283	0.1	9,298	1.2
Endocrine, nutritional, and metabolic diseases	278,803	3.6	258,310	3.8	17,675	8.0	2,818	0.4
Infectious and parasitic diseases	118,549	1.5	113,410	1.7	1,891	0.9	3,248	0.4
Injuries	307,805	3.9	292,161	4.3	5,575	2.5	10,069	1.3
Mental disorders								
Retardation	695,983	8.9	329,540	4.8	9,721	4.4	356,722	45.9
Other	2,121,759	27.2	1,947,274	28.6	52,686	23.9	121,799	15.7
Neoplasms	202,560	2.6	196,075	2.9	4,534	2.1	1,951	0.3
Diseases of the—								
Blood and blood-forming organs	19,467	0.2	17,080	0.3	365	0.2	2,022	0.3
Circulatory system	660,387	8.5	635,807	9.3	21,048	9.6	3,532	0.5
Digestive system	109,907	1.4	106,714	1.6	2,561	1.2	632	0.1
Genitourinary system	117,955	1.5	114,079	1.7	1,946	0.9	1,930	0.2
Musculoskeletal system and connective tissue	1,835,171	23.5	1,765,058	25.9	64,590	29.3	5,523	0.7
Nervous system and sense organs	738,423	9.5	649,336	9.5	15,965	7.3	73,122	9.4
Respiratory system	220,901	2.8	208,991	3.1	10,892	4.9	1,018	0.1
Skin and subcutaneous tissue	17,135	0.2	16,343	0.2	513	0.2	279	a
Other	16,036	0.2	14,384	0.2	291	0.1	1,361	0.2
Unknown	321,726	4.1	130,812	1.9	9,642	4.4	181,272	23.3
Men								
Subtotal	4,075,420	100.0	3,643,121	100.0	8,115	100.0	424,184	100.0
Congenital anomalies	10,728	0.3	5,918	0.2	11	0.1	4,799	1.1
Endocrine, nutritional, and metabolic diseases	115,106	2.8	113,451	3.1	368	4.5	1,287	0.3
Infectious and parasitic diseases	84,921	2.1	83,082	2.3	101	1.2	1,738	0.4
Injuries	209,637	5.1	202,246	5.6	398	4.9	6,993	1.6
Mental disorders								
Retardation	403,035	9.9	210,488	5.8	378	4.7	192,169	45.3
Other	1,056,303	25.9	977,700	26.8	1,696	20.9	76,907	18.1
Neoplasms	95,231	2.3	93,976	2.6	161	2.0	1,094	0.3
Diseases of the—								
Blood and blood-forming organs	8,590	0.2	7,557	0.2	18	0.2	1,015	0.2
Circulatory system	427,613	10.5	424,489	11.7	1,235	15.2	1,889	0.4
Digestive system	58,141	1.4	57,682	1.6	145	1.8	314	0.1
Genitourinary system	69,493	1.7	68,364	1.9	120	1.5	1,009	0.2
Musculoskeletal system and connective tissue	900,424	22.1	895,862	24.6	2,183	26.9	2,379	0.6
Nervous system and sense organs	360,411	8.8	320,968	8.8	568	7.0	38,875	9.2
Respiratory system	103,627	2.5	102,829	2.8	355	4.4	443	0.1
Skin and subcutaneous tissue	6,935	0.2	6,797	0.2	18	0.2	120	a
Other	7,405	0.2	6,642	0.2	10	0.1	753	0.2
Unknown	157,820	3.9	65,070	1.8	350	4.3	92,400	21.8

(Continued)

All Disabled Beneficiaries

Table 6.
Distribution, by sex and diagnostic group, December 2006—Continued

Diagnostic group	Total		Workers		Widow(er)s		Adult children	
	Number	Percent	Number	Percent	Number	Percent	Number	Percent
Women								
Subtotal	3,728,272	100.0	3,163,797	100.0	212,063	100.0	352,412	100.0
Congenital anomalies	10,397	0.3	5,626	0.2	272	0.1	4,499	1.3
Endocrine, nutritional, and metabolic diseases	163,697	4.4	144,859	4.6	17,307	8.2	1,531	0.4
Infectious and parasitic diseases	33,628	0.9	30,328	1.0	1,790	0.8	1,510	0.4
Injuries	98,168	2.6	89,915	2.8	5,177	2.4	3,076	0.9
Mental disorders								
Retardation	292,948	7.9	119,052	3.8	9,343	4.4	164,553	46.7
Other	1,065,456	28.6	969,574	30.6	50,990	24.0	44,892	12.7
Neoplasms	107,329	2.9	102,099	3.2	4,373	2.1	857	0.2
Diseases of the—								
Blood and blood-forming organs	10,877	0.3	9,523	0.3	347	0.2	1,007	0.3
Circulatory system	232,774	6.2	211,318	6.7	19,813	9.3	1,643	0.5
Digestive system	51,766	1.4	49,032	1.5	2,416	1.1	318	0.1
Genitourinary system	48,462	1.3	45,715	1.4	1,826	0.9	921	0.3
Musculoskeletal system and connective tissue	934,747	25.1	869,196	27.5	62,407	29.4	3,144	0.9
Nervous system and sense organs	378,012	10.1	328,368	10.4	15,397	7.3	34,247	9.7
Respiratory system	117,274	3.1	106,162	3.4	10,537	5.0	575	0.2
Skin and subcutaneous tissue	10,200	0.3	9,546	0.3	495	0.2	159	a
Other	8,631	0.2	7,742	0.2	281	0.1	608	0.2
Unknown	163,906	4.4	65,742	2.1	9,292	4.4	88,872	25.2

SOURCE: Social Security Administration, Disabled Beneficiaries and Dependents Master Beneficiary Record file, 100 percent data.

NOTE: The diagnosis for disabled adult children typically was not recorded on the Master Beneficiary Record until 1984. Many beneficiaries entitled before that date are still on the rolls today.

a. Less than 0.05 percent.

CONTACT: Kevin Kulzer (410) 965-5366 or di.asr@ssa.gov.

Table 7.
Average monthly benefit, by sex and diagnostic group, December 2006 (in dollars)

Diagnostic group	Total	Workers	Widow(er)s	Adult children
<i>All disabled beneficiaries</i>				
Total	934.50	977.70	630.70	642.40
Congenital anomalies	763.60	839.20	643.50	673.40
Endocrine, nutritional, and metabolic diseases	914.90	938.80	611.50	630.60
Infectious and parasitic diseases	949.80	965.10	616.20	607.00
Injuries	994.00	1,012.50	612.70	670.80
Mental disorders				
Retardation	644.40	658.90	565.50	633.10
Other	873.50	894.20	646.50	642.00
Neoplasms	1,114.20	1,129.40	652.10	658.50
Diseases of the—				
Blood and blood-forming organs	878.00	916.30	623.10	600.40
Circulatory system	1,098.00	1,115.90	630.70	661.70
Digestive system	1,022.50	1,033.80	647.90	634.50
Genitourinary system	1,015.60	1,029.10	626.70	613.10
Musculoskeletal system and connective tissue	1,025.30	1,041.00	630.80	629.20
Nervous system and sense organs	970.10	1,013.10	634.00	661.30
Respiratory system	1,004.20	1,024.60	650.40	608.30
Skin and subcutaneous tissue	934.50	949.70	624.90	613.00
Other	1,015.90	1,061.40	676.10	608.20
Unknown	773.60	953.60	614.60	652.20
<i>Men</i>				
Subtotal	1,048.60	1,097.40	455.00	640.20
Congenital anomalies	801.60	905.80	388.60	674.10
Endocrine, nutritional, and metabolic diseases	1,126.40	1,134.10	476.50	628.10
Infectious and parasitic diseases	1,002.10	1,011.20	481.20	595.20
Injuries	1,070.20	1,085.20	456.00	671.10
Mental disorders				
Retardation	664.30	696.90	375.40	629.20
Other	947.10	971.80	458.30	643.30
Neoplasms	1,299.50	1,308.50	461.20	656.60
Diseases of the—				
Blood and blood-forming organs	976.90	1,028.20	365.50	605.70
Circulatory system	1,241.70	1,246.60	485.60	655.20
Digestive system	1,166.40	1,171.10	470.70	630.20
Genitourinary system	1,121.60	1,130.30	500.50	604.50
Musculoskeletal system and connective tissue	1,208.20	1,211.60	449.20	625.50
Nervous system and sense organs	1,080.30	1,133.00	424.50	655.30
Respiratory system	1,218.30	1,223.50	477.80	609.20
Skin and subcutaneous tissue	1,075.70	1,085.30	473.90	619.10
Other	1,102.90	1,161.00	413.30	599.90
Unknown	820.30	1,061.00	431.00	652.20

(Continued)

All Disabled Beneficiaries

Table 7.
Average monthly benefit, by sex and diagnostic group, December 2006 (in dollars)—Continued

Diagnostic group	Total	Workers	Widow(er)s	Adult children
		<i>Women</i>		
Subtotal	809.90	839.80	637.40	645.00
Congenital anomalies	724.40	769.00	653.80	672.70
Endocrine, nutritional, and metabolic diseases	766.30	785.90	614.40	632.70
Infectious and parasitic diseases	817.70	839.00	623.80	620.40
Injuries	831.40	848.80	624.70	670.00
Mental disorders				
Retardation	616.90	591.70	573.20	637.70
Other	800.70	815.90	652.70	639.70
Neoplasms	949.80	964.70	659.20	660.80
Diseases of the—				
Blood and blood-forming organs	799.90	827.50	636.40	594.90
Circulatory system	833.90	853.30	639.70	669.20
Digestive system	860.90	872.30	658.50	638.80
Genitourinary system	863.70	877.70	635.00	622.40
Musculoskeletal system and connective tissue	849.20	865.20	637.20	632.00
Nervous system and sense organs	865.00	896.00	641.70	668.00
Respiratory system	815.10	832.00	656.20	607.70
Skin and subcutaneous tissue	838.50	853.10	630.40	608.50
Other	941.20	975.90	685.50	618.40
Unknown	728.60	847.20	621.50	652.10

SOURCE: Social Security Administration, Disabled Beneficiaries and Dependents Master Beneficiary Record file, 100 percent data.

NOTE: The diagnosis for disabled adult children typically was not recorded on the Master Beneficiary Record until 1984. Many beneficiaries entitled before that date are still on the rolls today.

CONTACT: Kevin Kulzer (410) 965-5366 or di.asr@ssa.gov.

Table 8.
Number aged 18–64 as a percentage of the resident population aged 18–64, by state,
December 2006

State	Resident population ^a	Beneficiaries	
		Number	Percentage of resident population
United States	188,402,570	7,352,612	3.9
Alabama	2,869,132	197,009	6.9
Alaska	442,989	11,009	2.5
Arizona	3,747,834	134,166	3.6
Arkansas	1,729,265	118,940	6.9
California	22,993,421	629,051	2.7
Colorado	3,106,890	81,336	2.6
Connecticut	2,216,080	75,462	3.4
Delaware	535,536	23,392	4.4
District of Columbia	395,318	11,502	2.9
Florida	11,030,629	439,152	4.0
Georgia	5,996,047	224,826	3.7
Hawaii	808,047	21,262	2.6
Idaho	903,012	33,833	3.7
Illinois	8,082,250	261,900	3.2
Indiana	3,951,672	165,347	4.2
Iowa	1,836,234	69,277	3.8
Kansas	1,710,529	61,169	3.6
Kentucky	2,669,249	184,917	6.9
Louisiana	2,674,421	133,689	5.0
Maine	847,941	52,241	6.2
Maryland	3,604,628	104,372	2.9
Massachusetts	4,132,347	174,940	4.2
Michigan	6,356,423	282,320	4.4
Minnesota	3,282,443	104,581	3.2
Mississippi	1,788,963	122,455	6.8
Missouri	3,647,230	184,162	5.0
Montana	596,192	23,494	3.9
Nebraska	1,088,643	37,605	3.5
Nevada	1,584,066	49,187	3.1
New Hampshire	854,641	38,127	4.5
New Jersey	5,507,480	176,175	3.2
New Mexico	1,203,069	52,258	4.3
New York	12,269,155	468,229	3.8
North Carolina	5,624,167	283,919	5.0
North Dakota	398,059	13,288	3.3
Ohio	7,175,977	285,710	4.0
Oklahoma	2,211,633	106,394	4.8
Oregon	2,366,319	85,552	3.6
Pennsylvania	7,750,425	346,387	4.5
Rhode Island	682,193	32,484	4.8

(Continued)

All Disabled Beneficiaries

Table 8.
Number aged 18–64 as a percentage of the resident population aged 18–64, by state,
December 2006—Continued

State	Resident population ^a	Beneficiaries	
		Number	Percentage of resident population
South Carolina	2,728,200	149,448	5.5
South Dakota	476,055	16,776	3.5
Tennessee	3,826,988	210,204	5.5
Texas	14,679,359	454,624	3.1
Utah	1,533,326	35,510	2.3
Vermont	407,553	18,453	4.5
Virginia	4,948,269	190,701	3.9
Washington	4,131,162	141,330	3.4
West Virginia	1,150,707	93,604	8.1
Wisconsin	3,519,942	130,115	3.7
Wyoming	330,460	10,728	3.2

SOURCES: Social Security Administration, Disabled Beneficiaries and Dependents Master Beneficiary Record file, 100 percent data; U.S. Census Bureau, 2006 estimates of resident population.

NOTE: Data exclude United States territories and other areas.

a. Population estimates for the United States as of July 1, 2006, as reported by the U.S. Census Bureau.

CONTACT: Kevin Kulzer (410) 965-5366 or di.asr@ssa.gov.

Table 9.
Distribution, by state or other area, December 2006

State or area	Total		Workers		Widow(er)s		Adult children	
	Number	Percent	Number	Percent	Number	Percent	Number	Percent
All areas	7,803,692	100.0	6,806,918	100.0	220,178	100.0	776,596	100.0
Alabama	203,163	2.6	178,303	2.6	7,261	3.3	17,599	2.3
Alaska	11,294	0.1	10,253	0.2	245	0.1	796	0.1
Arizona	138,364	1.8	125,654	1.8	3,258	1.5	9,452	1.2
Arkansas	122,863	1.6	109,104	1.6	4,192	1.9	9,567	1.2
California	649,822	8.3	570,177	8.4	14,720	6.7	64,925	8.4
Colorado	83,813	1.1	75,874	1.1	1,799	0.8	6,140	0.8
Connecticut	78,405	1.0	67,295	1.0	1,587	0.7	9,523	1.2
Delaware	24,183	0.3	21,702	0.3	531	0.2	1,950	0.3
District of Columbia	11,862	0.2	10,263	0.2	239	0.1	1,360	0.2
Florida	454,426	5.8	407,193	6.0	12,046	5.5	35,187	4.5
Georgia	232,656	3.0	203,994	3.0	7,676	3.5	20,986	2.7
Hawaii	22,100	0.3	19,211	0.3	516	0.2	2,373	0.3
Idaho	35,020	0.4	31,357	0.5	857	0.4	2,806	0.4
Illinois	271,534	3.5	231,653	3.4	7,439	3.4	32,442	4.2
Indiana	171,266	2.2	148,744	2.2	5,021	2.3	17,501	2.3
Iowa	72,104	0.9	61,805	0.9	1,726	0.8	8,573	1.1
Kansas	63,376	0.8	55,525	0.8	1,615	0.7	6,236	0.8
Kentucky	191,225	2.5	167,339	2.5	7,202	3.3	16,684	2.1
Louisiana	138,043	1.8	114,683	1.7	5,642	2.6	17,718	2.3
Maine	53,971	0.7	48,000	0.7	1,264	0.6	4,707	0.6
Maryland	107,951	1.4	94,535	1.4	2,439	1.1	10,977	1.4
Massachusetts	180,760	2.3	158,861	2.3	3,479	1.6	18,420	2.4
Michigan	292,359	3.7	250,412	3.7	8,270	3.8	33,677	4.3
Minnesota	108,420	1.4	94,887	1.4	1,842	0.8	11,691	1.5
Mississippi	126,500	1.6	109,552	1.6	4,821	2.2	12,127	1.6
Missouri	190,693	2.4	168,295	2.5	5,711	2.6	16,687	2.1
Montana	24,445	0.3	21,604	0.3	614	0.3	2,227	0.3
Nebraska	39,095	0.5	33,921	0.5	852	0.4	4,322	0.6
Nevada	50,882	0.7	46,951	0.7	1,220	0.6	2,711	0.3
New Hampshire	39,309	0.5	35,568	0.5	777	0.4	2,964	0.4
New Jersey	183,060	2.3	158,607	2.3	4,217	1.9	20,236	2.6
New Mexico	53,878	0.7	48,089	0.7	1,300	0.6	4,489	0.6
New York	486,631	6.2	416,955	6.1	12,251	5.6	57,425	7.4
North Carolina	294,444	3.8	260,960	3.8	8,947	4.1	24,537	3.2
North Dakota	13,987	0.2	11,697	0.2	302	0.1	1,988	0.3
Ohio	296,485	3.8	251,744	3.7	9,472	4.3	35,269	4.5
Oklahoma	110,266	1.4	97,024	1.4	3,679	1.7	9,563	1.2
Oregon	88,596	1.1	78,853	1.2	2,172	1.0	7,571	1.0
Pennsylvania	359,674	4.6	309,581	4.5	10,162	4.6	39,931	5.1
Rhode Island	33,639	0.4	29,738	0.4	713	0.3	3,188	0.4

(Continued)

All Disabled Beneficiaries

Table 9.
Distribution, by state or other area, December 2006—Continued

State or area	Total		Workers		Widow(er)s		Adult children	
	Number	Percent	Number	Percent	Number	Percent	Number	Percent
South Carolina	154,814	2.0	135,816	2.0	5,283	2.4	13,715	1.8
South Dakota	17,539	0.2	15,044	0.2	392	0.2	2,103	0.3
Tennessee	217,604	2.8	190,613	2.8	7,888	3.6	19,103	2.5
Texas	469,739	6.0	410,805	6.0	15,211	6.9	43,723	5.6
Utah	36,629	0.5	32,280	0.5	749	0.3	3,600	0.5
Vermont	19,073	0.2	16,673	0.2	448	0.2	1,952	0.3
Virginia	197,297	2.5	173,567	2.5	5,900	2.7	17,830	2.3
Washington	145,886	1.9	130,099	1.9	3,303	1.5	12,484	1.6
West Virginia	97,114	1.2	83,129	1.2	3,886	1.8	10,099	1.3
Wisconsin	135,143	1.7	116,154	1.7	2,796	1.3	16,193	2.1
Wyoming	11,086	0.1	9,937	0.1	238	0.1	911	0.1
Outlying areas								
American Samoa	1,264	a	1,114	a	50	a	100	a
Guam	1,431	a	1,248	a	38	a	145	a
Northern Mariana Islands	255	a	198	a	9	a	48	a
Puerto Rico	167,722	2.1	139,922	2.1	5,090	2.3	22,710	2.9
U.S. Virgin Islands	2,010	a	1,638	a	62	a	310	a
Foreign countries	18,522	0.2	12,718	0.2	759	0.3	5,045	0.6

SOURCE: Social Security Administration, Disabled Beneficiaries and Dependents Master Beneficiary Record file, 100 percent data.

a. Less than 0.05 percent.

CONTACT: Kevin Kulzer (410) 965-5366 or di.asr@ssa.gov.

Table 10.
Number, by state or other area and diagnostic group, December 2006

State or area	Total	Congenital anomalies	Endocrine, nutritional, and metabolic diseases	Infectious and parasitic diseases	Injuries	Mental disorders			Neoplasms
						Total	Retardation	Other	
All areas	7,803,692	21,125	278,803	118,549	307,805	2,817,742	695,983	2,121,759	202,560
Alabama	203,163	409	8,628	2,076	9,088	61,053	16,668	44,385	4,646
Alaska	11,294	32	329	130	527	4,131	862	3,269	355
Arizona	138,364	344	4,519	1,907	5,839	55,570	8,114	47,456	3,122
Arkansas	122,863	309	5,036	1,304	5,532	33,780	11,292	22,488	3,214
California	649,822	1,809	19,534	15,158	26,863	251,090	44,017	207,073	17,027
Colorado	83,813	333	2,540	1,315	4,044	27,858	6,411	21,447	2,321
Connecticut	78,405	215	2,381	1,205	2,331	34,314	8,073	26,241	2,125
Delaware	24,183	68	893	456	922	8,018	2,077	5,941	684
District of Columbia	11,862	14	368	699	296	5,119	1,380	3,739	242
Florida	454,426	1,305	16,998	12,138	21,899	149,686	28,995	120,691	13,351
Georgia	232,656	553	9,939	5,101	9,187	73,168	21,404	51,764	6,397
Hawaii	22,100	43	575	396	854	9,952	1,821	8,131	635
Idaho	35,020	105	1,121	287	1,590	13,312	2,798	10,514	891
Illinois	271,534	688	10,663	3,829	9,365	109,861	29,380	80,481	7,524
Indiana	171,266	398	7,726	1,811	5,771	63,183	18,931	44,252	4,674
Iowa	72,104	248	2,764	546	2,655	28,311	9,713	18,598	1,961
Kansas	63,376	182	2,722	619	2,803	23,016	7,066	15,950	1,679
Kentucky	191,225	407	6,318	1,449	6,664	68,631	17,145	51,486	3,997
Louisiana	138,043	324	5,058	2,032	5,892	40,257	16,196	24,061	3,364
Maine	53,971	162	1,540	373	1,958	23,094	4,505	18,589	1,156
Maryland	107,951	397	3,755	2,636	4,190	37,613	10,089	27,524	3,393
Massachusetts	180,760	594	4,313	2,812	5,886	86,785	14,105	72,680	4,333
Michigan	292,359	739	10,565	2,516	9,976	114,879	27,211	87,668	7,357
Minnesota	108,420	312	2,675	1,021	4,235	51,335	12,719	38,616	2,973
Mississippi	126,500	227	5,836	1,488	5,200	42,952	11,992	30,960	3,156
Missouri	190,693	586	8,156	2,250	8,359	62,590	18,103	44,487	4,603
Montana	24,445	77	689	194	1,274	8,307	2,107	6,200	632
Nebraska	39,095	129	1,470	371	1,785	13,366	4,212	9,154	1,090
Nevada	50,882	166	1,737	818	2,358	15,662	2,357	13,305	1,365
New Hampshire	39,309	104	903	283	1,369	18,294	2,706	15,588	895
New Jersey	183,060	487	5,289	3,212	6,710	65,733	14,895	50,838	5,759
New Mexico	53,878	175	1,823	630	2,682	19,593	3,980	15,613	1,092
New York	486,631	1,283	13,919	10,919	17,355	158,610	41,998	116,612	13,186
North Carolina	294,444	715	13,111	4,485	10,780	95,250	29,790	65,460	8,029
North Dakota	13,987	63	354	86	617	5,489	2,020	3,469	391
Ohio	296,485	956	10,696	2,673	9,219	130,906	35,436	95,470	7,236
Oklahoma	110,266	262	4,606	1,183	4,403	35,954	10,564	25,390	2,704
Oregon	88,596	261	2,898	1,135	4,239	31,259	7,152	24,107	2,404
Pennsylvania	359,674	1,114	13,121	4,259	15,149	122,604	35,456	87,148	9,754
Rhode Island	33,639	66	1,013	381	988	15,557	3,342	12,215	802

(Continued)

All Disabled Beneficiaries

Table 10.
Number, by state or other area and diagnostic group, December 2006—Continued

State or area	Diseases of the—								Other	Unknown
	Blood and blood-forming organs	Circulatory system	Digestive system	Genitourinary system	Musculoskeletal system and connective tissue	Nervous system and sense organs	Respiratory system	Skin and subcutaneous tissue		
All areas	19,467	660,387	109,907	117,955	1,835,171	738,423	220,901	17,135	16,036	321,726
Alabama	698	21,020	2,624	2,946	57,746	17,257	6,349	526	450	7,647
Alaska	26	716	176	128	2,932	1,209	285	30	34	254
Arizona	247	9,465	2,146	1,984	31,808	13,404	3,570	283	410	3,746
Arkansas	316	13,215	1,789	1,420	37,308	11,245	4,369	427	200	3,399
California	1,317	44,004	10,226	11,978	154,809	63,130	10,935	1,219	1,575	19,148
Colorado	147	4,666	1,365	1,134	20,970	11,117	2,711	181	210	2,901
Connecticut	163	5,329	1,023	1,025	14,384	7,414	1,865	191	142	4,298
Delaware	81	2,074	363	432	6,364	2,206	699	36	71	816
District of Columbia	60	866	97	413	1,750	1,113	257	40	22	506
Florida	1,420	42,740	8,137	7,105	104,259	39,387	13,493	1,706	992	19,810
Georgia	963	24,379	3,417	4,842	54,501	20,402	7,729	557	393	11,128
Hawaii	33	1,964	226	585	3,707	1,826	415	46	67	776
Idaho	35	2,212	494	365	8,646	3,862	990	75	64	971
Illinois	781	23,313	3,395	4,658	50,419	27,609	7,778	497	571	10,583
Indiana	440	15,591	2,639	2,371	34,396	17,793	6,430	305	336	7,402
Iowa	145	4,912	868	847	15,322	7,695	2,324	135	142	3,229
Kansas	154	4,804	981	864	13,975	6,827	2,165	118	125	2,342
Kentucky	313	17,186	2,380	1,738	51,658	14,159	7,156	369	366	8,434
Louisiana	488	15,512	1,748	2,367	37,431	11,721	3,491	379	288	7,691
Maine	67	3,629	649	372	13,093	4,576	1,372	164	96	1,670
Maryland	437	10,352	1,535	2,608	20,855	11,531	3,033	246	227	5,143
Massachusetts	320	10,271	2,458	1,559	34,295	16,176	3,872	253	377	6,456
Michigan	696	24,237	3,528	4,219	64,078	28,001	8,322	673	502	12,071
Minnesota	202	6,804	1,256	1,219	18,503	11,644	2,170	164	212	3,695
Mississippi	447	14,745	1,366	2,206	27,594	10,498	3,666	328	273	6,518
Missouri	465	16,471	3,016	2,428	49,579	18,228	6,685	416	353	6,508
Montana	35	1,474	330	251	6,386	2,945	838	50	57	906
Nebraska	70	3,086	518	570	9,146	4,510	1,307	61	67	1,549
Nevada	133	4,634	966	781	13,538	5,209	1,764	115	136	1,500
New Hampshire	51	2,461	507	298	8,032	3,787	1,087	57	70	1,111
New Jersey	575	16,648	2,856	3,218	39,822	19,391	4,754	410	489	7,707
New Mexico	91	3,048	892	855	14,383	5,375	1,439	136	159	1,505
New York	1,330	38,629	6,066	6,748	136,721	43,643	12,615	878	709	24,020
North Carolina	868	30,225	4,288	5,163	71,167	24,871	10,145	703	593	14,051
North Dakota	16	1,064	165	184	2,960	1,590	394	26	23	565
Ohio	609	23,401	3,181	4,183	50,148	26,289	9,381	488	397	16,722
Oklahoma	195	10,477	1,610	1,421	29,764	10,471	4,044	271	180	2,721
Oregon	169	5,751	1,566	1,001	21,944	10,915	2,349	205	163	2,337
Pennsylvania	819	31,771	5,659	4,765	87,904	35,024	10,190	614	1,088	15,839
Rhode Island	73	2,247	443	280	6,554	2,840	829	91	104	1,371

(Continued)

Table 10.
Number, by state or other area and diagnostic group, December 2006—Continued

State or area	Total	Congenital anomalies	Endocrine, nutritional, and metabolic diseases	Infectious and parasitic diseases	Injuries	Mental disorders			Neoplasms
						Total	Retardation	Other	
South Carolina	154,814	306	5,741	2,140	6,274	50,959	13,762	37,197	3,949
South Dakota	17,539	80	489	153	641	6,516	2,137	4,379	414
Tennessee	217,604	487	8,193	2,200	7,309	77,059	19,204	57,855	5,375
Texas	469,739	1,100	21,858	9,011	20,470	145,012	35,909	109,103	13,310
Utah	36,629	180	1,219	320	1,415	14,799	3,795	11,004	836
Vermont	19,073	82	609	179	743	8,106	1,659	6,447	464
Virginia	197,297	531	7,396	2,627	7,323	65,730	19,693	46,037	5,461
Washington	145,886	418	4,674	1,929	5,562	59,712	11,252	48,460	4,049
West Virginia	97,114	225	4,264	616	4,589	30,079	10,674	19,405	2,037
Wisconsin	135,143	603	4,553	1,221	5,195	53,595	14,811	38,784	3,468
Wyoming	11,086	45	297	101	598	3,875	1,085	2,790	267
Outlying areas									
American Samoa	1,264	3	155	8	54	141	56	85	23
Guam	1,431	4	32	12	67	383	134	249	40
Northern Mariana Islands	255	0	5	4	15	72	28	44	6
Puerto Rico	167,722	278	2,460	1,563	5,788	78,274	12,496	65,778	1,882
U.S. Virgin Islands	2,010	4	36	30	109	584	192	392	52
Foreign countries	18,522	118	241	252	799	6,704	2,014	4,690	408

(Continued)

All Disabled Beneficiaries

Table 10.
Number, by state or other area and diagnostic group, December 2006—Continued

State or area	Diseases of the—								Other	Unknown
	Blood and blood-forming organs	Circulatory system	Digestive system	Genitourinary system	Musculoskeletal system and connective tissue	Nervous system and sense organs	Respiratory system	Skin and subcutaneous tissue		
South Carolina	645	16,805	2,055	2,895	38,107	13,202	5,417	382	325	5,612
South Dakota	26	1,267	195	189	3,976	2,370	559	34	37	593
Tennessee	473	20,649	2,893	3,077	51,959	17,462	7,812	474	385	11,797
Texas	1,192	45,070	7,472	10,098	115,005	49,323	11,862	943	927	17,086
Utah	58	2,053	560	491	7,535	4,533	1,022	73	97	1,438
Vermont	35	1,118	240	134	4,128	1,760	526	40	49	860
Virginia	622	18,576	2,777	3,577	49,806	17,576	6,172	430	441	8,252
Washington	288	8,852	2,519	1,728	32,180	15,151	3,599	319	285	4,621
West Virginia	152	9,325	1,221	729	26,303	7,068	3,721	219	172	6,394
Wisconsin	291	9,280	1,757	1,751	27,837	15,518	3,187	244	265	6,378
Wyoming	11	743	172	129	2,700	1,386	454	20	41	247
Outlying areas										
American Samoa	a	125	12	20	495	124	39	27	a	25
Guam	a	217	a	61	319	192	35	7	19	24
Northern Mariana Islands	a	43	a	15	27	43	5	12	a	4
Puerto Rico	140	9,100	914	1,329	41,702	13,626	2,989	395	211	7,071
U.S. Virgin Islands	16	234	11	56	527	260	19	8	3	61
Foreign countries	18	1,537	142	145	3,714	1,939	216	39	33	2,217

SOURCE: Social Security Administration, Disabled Beneficiaries and Dependents Master Beneficiary Record file, 100 percent data.

NOTE: The diagnosis for disabled adult children typically was not recorded on the Master Beneficiary Record until 1984. Many beneficiaries entitled before that date are still on the rolls today.

a. Data not shown to avoid disclosure of information for particular individuals.

CONTACT: Kevin Kulzer (410) 965-5366 or di.asr@ssa.gov.

Table 11.
Percentage distribution, by state or other area and diagnostic group, December 2006

State or area	Total		Congenital anomalies	Endocrine, nutritional, and metabolic diseases	Infectious and parasitic diseases	Injuries	Mental disorders			Neoplasms
	Number	Percent					Total	Retardation	Other	
All areas	7,803,692	100.0	0.3	3.6	1.5	3.9	36.1	8.9	27.2	2.6
Alabama	203,163	100.0	0.2	4.2	1.0	4.5	30.0	8.2	21.8	2.3
Alaska	11,294	100.0	0.3	2.9	1.2	4.7	36.5	7.6	28.9	3.1
Arizona	138,364	100.0	0.2	3.3	1.4	4.2	40.2	5.9	34.3	2.3
Arkansas	122,863	100.0	0.3	4.1	1.1	4.5	27.5	9.2	18.3	2.6
California	649,822	100.0	0.3	3.0	2.3	4.1	38.7	6.8	31.9	2.6
Colorado	83,813	100.0	0.4	3.0	1.6	4.8	33.2	7.6	25.6	2.8
Connecticut	78,405	100.0	0.3	3.0	1.5	3.0	43.8	10.3	33.5	2.7
Delaware	24,183	100.0	0.3	3.7	1.9	3.8	33.2	8.6	24.6	2.8
District of Columbia	11,862	100.0	0.1	3.1	5.9	2.5	43.1	11.6	31.5	2.0
Florida	454,426	100.0	0.3	3.7	2.7	4.8	33.0	6.4	26.6	2.9
Georgia	232,656	100.0	0.2	4.3	2.2	3.9	31.4	9.2	22.2	2.7
Hawaii	22,100	100.0	0.2	2.6	1.8	3.9	45.0	8.2	36.8	2.9
Idaho	35,020	100.0	0.3	3.2	0.8	4.5	38.0	8.0	30.0	2.5
Illinois	271,534	100.0	0.3	3.9	1.4	3.4	40.4	10.8	29.6	2.8
Indiana	171,266	100.0	0.2	4.5	1.1	3.4	36.9	11.1	25.8	2.7
Iowa	72,104	100.0	0.3	3.8	0.8	3.7	39.3	13.5	25.8	2.7
Kansas	63,376	100.0	0.3	4.3	1.0	4.4	36.3	11.1	25.2	2.6
Kentucky	191,225	100.0	0.2	3.3	0.8	3.5	35.9	9.0	26.9	2.1
Louisiana	138,043	100.0	0.2	3.7	1.5	4.3	29.1	11.7	17.4	2.4
Maine	53,971	100.0	0.3	2.9	0.7	3.6	42.7	8.3	34.4	2.1
Maryland	107,951	100.0	0.4	3.5	2.4	3.9	34.8	9.3	25.5	3.1
Massachusetts	180,760	100.0	0.3	2.4	1.6	3.3	48.0	7.8	40.2	2.4
Michigan	292,359	100.0	0.3	3.6	0.9	3.4	39.3	9.3	30.0	2.5
Minnesota	108,420	100.0	0.3	2.5	0.9	3.9	47.3	11.7	35.6	2.7
Mississippi	126,500	100.0	0.2	4.6	1.2	4.1	34.0	9.5	24.5	2.5
Missouri	190,693	100.0	0.3	4.3	1.2	4.4	32.8	9.5	23.3	2.4
Montana	24,445	100.0	0.3	2.8	0.8	5.2	34.0	8.6	25.4	2.6
Nebraska	39,095	100.0	0.3	3.8	0.9	4.6	34.2	10.8	23.4	2.8
Nevada	50,882	100.0	0.3	3.4	1.6	4.6	30.7	4.6	26.1	2.7
New Hampshire	39,309	100.0	0.3	2.3	0.7	3.5	46.6	6.9	39.7	2.3
New Jersey	183,060	100.0	0.3	2.9	1.8	3.7	35.9	8.1	27.8	3.1
New Mexico	53,878	100.0	0.3	3.4	1.2	5.0	36.4	7.4	29.0	2.0
New York	486,631	100.0	0.3	2.9	2.2	3.6	32.6	8.6	24.0	2.7
North Carolina	294,444	100.0	0.2	4.5	1.5	3.7	32.3	10.1	22.2	2.7
North Dakota	13,987	100.0	0.5	2.5	0.6	4.4	39.2	14.4	24.8	2.8
Ohio	296,485	100.0	0.3	3.6	0.9	3.1	44.2	12.0	32.2	2.4
Oklahoma	110,266	100.0	0.2	4.2	1.1	4.0	32.6	9.6	23.0	2.5
Oregon	88,596	100.0	0.3	3.3	1.3	4.8	35.3	8.1	27.2	2.7
Pennsylvania	359,674	100.0	0.3	3.6	1.2	4.2	34.1	9.9	24.2	2.7
Rhode Island	33,639	100.0	0.2	3.0	1.1	2.9	46.2	9.9	36.3	2.4

(Continued)

All Disabled Beneficiaries

Table 11.
Percentage distribution, by state or other area and diagnostic group, December 2006—Continued

State or area	Diseases of the—								Other	Unknown
	Blood and blood-forming organs	Circulatory system	Digestive system	Genitourinary system	Musculoskeletal system and connective tissue	Nervous system and sense organs	Respiratory system	Skin and subcutaneous tissue		
All areas	0.2	8.5	1.4	1.5	23.5	9.5	2.8	0.2	0.2	4.1
Alabama	0.3	10.3	1.3	1.5	28.4	8.5	3.1	0.3	0.2	3.8
Alaska	0.2	6.3	1.6	1.1	26.0	10.7	2.5	0.3	0.3	2.2
Arizona	0.2	6.8	1.6	1.4	23.0	9.7	2.6	0.2	0.3	2.7
Arkansas	0.3	10.8	1.5	1.2	30.4	9.2	3.6	0.3	0.2	2.8
California	0.2	6.8	1.6	1.8	23.8	9.7	1.7	0.2	0.2	2.9
Colorado	0.2	5.6	1.6	1.4	25.0	13.3	3.2	0.2	0.3	3.5
Connecticut	0.2	6.8	1.3	1.3	18.3	9.5	2.4	0.2	0.2	5.5
Delaware	0.3	8.6	1.5	1.8	26.3	9.1	2.9	0.1	0.3	3.4
District of Columbia	0.5	7.3	0.8	3.5	14.8	9.4	2.2	0.3	0.2	4.3
Florida	0.3	9.4	1.8	1.6	22.9	8.7	3.0	0.4	0.2	4.4
Georgia	0.4	10.5	1.5	2.1	23.4	8.8	3.3	0.2	0.2	4.8
Hawaii	0.1	8.9	1.0	2.6	16.8	8.3	1.9	0.2	0.3	3.5
Idaho	0.1	6.3	1.4	1.0	24.7	11.0	2.8	0.2	0.2	2.8
Illinois	0.3	8.6	1.3	1.7	18.6	10.2	2.9	0.2	0.2	3.9
Indiana	0.3	9.1	1.5	1.4	20.1	10.4	3.8	0.2	0.2	4.3
Iowa	0.2	6.8	1.2	1.2	21.2	10.7	3.2	0.2	0.2	4.5
Kansas	0.2	7.6	1.5	1.4	22.1	10.8	3.4	0.2	0.2	3.7
Kentucky	0.2	9.0	1.2	0.9	27.0	7.4	3.7	0.2	0.2	4.4
Louisiana	0.4	11.2	1.3	1.7	27.1	8.5	2.5	0.3	0.2	5.6
Maine	0.1	6.7	1.2	0.7	24.3	8.5	2.5	0.3	0.2	3.1
Maryland	0.4	9.6	1.4	2.4	19.3	10.7	2.8	0.2	0.2	4.8
Massachusetts	0.2	5.7	1.4	0.9	19.0	8.9	2.1	0.1	0.2	3.6
Michigan	0.2	8.3	1.2	1.4	21.9	9.6	2.8	0.2	0.2	4.1
Minnesota	0.2	6.3	1.2	1.1	17.1	10.7	2.0	0.2	0.2	3.4
Mississippi	0.4	11.7	1.1	1.7	21.8	8.3	2.9	0.3	0.2	5.2
Missouri	0.2	8.6	1.6	1.3	26.0	9.6	3.5	0.2	0.2	3.4
Montana	0.1	6.0	1.3	1.0	26.1	12.0	3.4	0.2	0.2	3.7
Nebraska	0.2	7.9	1.3	1.5	23.4	11.5	3.3	0.2	0.2	4.0
Nevada	0.3	9.1	1.9	1.5	26.6	10.2	3.5	0.2	0.3	2.9
New Hampshire	0.1	6.3	1.3	0.8	20.4	9.6	2.8	0.1	0.2	2.8
New Jersey	0.3	9.1	1.6	1.8	21.8	10.6	2.6	0.2	0.3	4.2
New Mexico	0.2	5.7	1.7	1.6	26.7	10.0	2.7	0.3	0.3	2.8
New York	0.3	7.9	1.2	1.4	28.1	9.0	2.6	0.2	0.1	4.9
North Carolina	0.3	10.3	1.5	1.8	24.2	8.4	3.4	0.2	0.2	4.8
North Dakota	0.1	7.6	1.2	1.3	21.2	11.4	2.8	0.2	0.2	4.0
Ohio	0.2	7.9	1.1	1.4	16.9	8.9	3.2	0.2	0.1	5.6
Oklahoma	0.2	9.5	1.5	1.3	27.0	9.5	3.7	0.2	0.2	2.5
Oregon	0.2	6.5	1.8	1.1	24.8	12.3	2.7	0.2	0.2	2.6
Pennsylvania	0.2	8.8	1.6	1.3	24.4	9.7	2.8	0.2	0.3	4.4
Rhode Island	0.2	6.7	1.3	0.8	19.5	8.4	2.5	0.3	0.3	4.1

(Continued)

Table 11.
Percentage distribution, by state or other area and diagnostic group, December 2006—Continued

State or area	Total		Congenital anomalies	Endocrine, nutritional, and metabolic diseases	Infectious and parasitic diseases	Injuries	Mental disorders			Neoplasms
	Number	Percent					Total	Retardation	Other	
South Carolina	154,814	100.0	0.2	3.7	1.4	4.1	32.9	8.9	24.0	2.6
South Dakota	17,539	100.0	0.5	2.8	0.9	3.7	37.2	12.2	25.0	2.4
Tennessee	217,604	100.0	0.2	3.8	1.0	3.4	35.4	8.8	26.6	2.5
Texas	469,739	100.0	0.2	4.7	1.9	4.4	30.8	7.6	23.2	2.8
Utah	36,629	100.0	0.5	3.3	0.9	3.9	40.4	10.4	30.0	2.3
Vermont	19,073	100.0	0.4	3.2	0.9	3.9	42.5	8.7	33.8	2.4
Virginia	197,297	100.0	0.3	3.7	1.3	3.7	33.3	10.0	23.3	2.8
Washington	145,886	100.0	0.3	3.2	1.3	3.8	40.9	7.7	33.2	2.8
West Virginia	97,114	100.0	0.2	4.4	0.6	4.7	31.0	11.0	20.0	2.1
Wisconsin	135,143	100.0	0.4	3.4	0.9	3.8	39.7	11.0	28.7	2.6
Wyoming	11,086	100.0	0.4	2.7	0.9	5.4	35.0	9.8	25.2	2.4
Outlying areas										
American Samoa	1,264	100.0	0.2	12.3	0.6	4.3	11.1	4.4	6.7	1.8
Guam	1,431	100.0	0.3	2.2	0.8	4.7	26.8	9.4	17.4	2.8
Northern Mariana Islands	255	100.0	0	2.0	1.6	5.9	28.3	11.0	17.3	2.4
Puerto Rico	167,722	100.0	0.2	1.5	0.9	3.5	46.7	7.5	39.2	1.1
U.S. Virgin Islands	2,010	100.0	0.2	1.8	1.5	5.4	29.1	9.6	19.5	2.6
Foreign countries	18,522	100.0	0.6	1.3	1.4	4.3	36.2	10.9	25.3	2.2

(Continued)

All Disabled Beneficiaries

Table 11.
Percentage distribution, by state or other area and diagnostic group, December 2006—Continued

State or area	Diseases of the—								Other	Unknown
	Blood and blood-forming organs	Circulatory system	Digestive system	Genitourinary system	Musculoskeletal system and connective tissue	Nervous system and sense organs	Respiratory system	Skin and subcutaneous tissue		
South Carolina	0.4	10.9	1.3	1.9	24.6	8.5	3.5	0.2	0.2	3.6
South Dakota	0.1	7.2	1.1	1.1	22.7	13.5	3.2	0.2	0.2	3.4
Tennessee	0.2	9.5	1.3	1.4	23.9	8.0	3.6	0.2	0.2	5.4
Texas	0.3	9.6	1.6	2.1	24.5	10.5	2.5	0.2	0.2	3.6
Utah	0.2	5.6	1.5	1.3	20.6	12.4	2.8	0.2	0.3	3.9
Vermont	0.2	5.9	1.3	0.7	21.6	9.2	2.8	0.2	0.3	4.5
Virginia	0.3	9.4	1.4	1.8	25.2	8.9	3.1	0.2	0.2	4.2
Washington	0.2	6.1	1.7	1.2	22.1	10.4	2.5	0.2	0.2	3.2
West Virginia	0.2	9.6	1.3	0.8	27.1	7.3	3.8	0.2	0.2	6.6
Wisconsin	0.2	6.9	1.3	1.3	20.6	11.5	2.4	0.2	0.2	4.7
Wyoming	0.1	6.7	1.6	1.2	24.4	12.5	4.1	0.2	0.4	2.2
Outlying areas										
American Samoa	a	9.9	0.9	1.6	39.2	9.8	3.1	2.1	a	2.0
Guam	a	15.2	a	4.3	22.3	13.4	2.4	0.5	1.3	1.7
Northern Mariana Islands	a	16.9	a	5.9	10.6	16.9	2.0	4.7	a	1.6
Puerto Rico	0.1	5.4	0.5	0.8	24.9	8.1	1.8	0.2	0.1	4.2
U.S. Virgin Islands	0.8	11.6	0.5	2.8	26.2	12.9	0.9	0.4	0.1	3.0
Foreign countries	0.1	8.3	0.8	0.8	20.1	10.5	1.2	0.2	0.2	12.0

SOURCE: Social Security Administration, Disabled Beneficiaries and Dependents Master Beneficiary Record file, 100 percent data.

NOTE: The diagnosis for disabled adult children typically was not recorded on the Master Beneficiary Record until 1984. Many beneficiaries entitled before that date are still on the rolls today.

a. Data not shown to avoid disclosure of information for particular individuals.

CONTACT: Kevin Kulzer (410) 965-5366 or di.asr@ssa.gov.

Table 12.
Number receiving Social Security disability benefits because of blindness or deafness,
by state or other area, December 2006

State or area	Blind				Deaf			
	Total	Workers	Widow(er)s	Adult children	Total	Workers	Widow(er)s	Adult children
All areas	110,094	96,805	2,323	10,966	62,583	52,780	1,086	8,717
Alabama	2,645	2,352	65	228	1,508	1,247	31	230
Alaska	164	153	3	8	131	119	3	9
Arizona	1,815	1,619	41	155	1,125	992	12	121
Arkansas	1,616	1,417	37	162	857	722	29	106
California	9,866	8,544	171	1,151	5,237	4,299	72	866
Colorado	1,099	991	16	92	859	773	13	73
Connecticut	1,208	1,023	28	157	684	586	9	89
Delaware	328	299	4	25	177	155	a	a
District of Columbia	193	174	4	15	251	206	3	42
Florida	5,272	4,729	130	413	4,186	3,548	56	582
Georgia	3,759	3,363	99	297	1,800	1,455	40	305
Hawaii	316	278	4	34	195	166	a	a
Idaho	495	444	8	43	234	209	4	21
Illinois	4,266	3,766	88	412	2,215	1,900	29	286
Indiana	2,801	2,522	52	227	1,565	1,355	32	178
Iowa	1,000	867	11	122	641	580	10	51
Kansas	1,062	944	21	97	615	558	7	50
Kentucky	2,401	2,056	70	275	1,328	1,095	35	198
Louisiana	2,103	1,816	62	225	1,153	822	44	287
Maine	543	474	7	62	341	311	3	27
Maryland	1,530	1,365	26	139	1,272	1,106	9	157
Massachusetts	2,776	2,241	37	498	1,187	1,029	13	145
Michigan	3,428	2,937	65	426	2,123	1,817	41	265
Minnesota	1,649	1,457	17	175	1,056	962	10	84
Mississippi	2,070	1,871	40	159	931	765	22	144
Missouri	2,673	2,377	52	244	1,329	1,161	15	153
Montana	302	269	6	27	181	161	3	17
Nebraska	586	523	4	59	333	305	8	20
Nevada	785	702	13	70	379	325	9	45
New Hampshire	393	339	10	44	224	197	5	22
New Jersey	2,690	2,392	42	256	1,501	1,285	23	193
New Mexico	828	726	21	81	403	343	14	46
New York	5,894	5,084	124	686	3,862	3,214	58	590
North Carolina	3,990	3,564	91	335	2,061	1,798	36	227
North Dakota	158	139	0	19	81	75	0	6
Ohio	4,340	3,845	106	389	2,551	2,185	53	313
Oklahoma	1,765	1,563	47	155	897	766	28	103
Oregon	1,489	1,292	22	175	926	800	13	113
Pennsylvania	4,693	4,121	83	489	2,565	2,158	44	363
Rhode Island	380	331	9	40	213	188	a	a

(Continued)

All Disabled Beneficiaries

Table 12.
Number receiving Social Security disability benefits because of blindness or deafness,
by state or other area, December 2006—Continued

State or area	Blind				Deaf			
	Total	Workers	Widow(er)s	Adult children	Total	Workers	Widow(er)s	Adult children
South Carolina	2,739	2,429	93	217	1,025	848	17	160
South Dakota	260	227	4	29	174	154	a	a
Tennessee	3,326	2,959	74	293	1,535	1,295	36	204
Texas	8,444	7,586	192	666	4,542	3,858	60	624
Utah	636	560	12	64	425	398	4	23
Vermont	188	168	a	a	136	120	a	a
Virginia	2,406	2,108	58	240	1,243	1,059	26	158
Washington	1,789	1,567	30	192	1,223	1,040	27	156
West Virginia	1,015	872	28	115	559	458	14	87
Wisconsin	1,606	1,415	19	172	1,127	989	13	125
Wyoming	123	113	0	10	77	70	0	7
Outlying areas								
Puerto Rico	1,772	1,496	59	217	1,136	630	30	476
Other ^b	108	95	a	a	61	45	a	a
Foreign countries	311	241	12	58	143	78	12	53

SOURCE: Social Security Administration, Disabled Beneficiaries and Dependents Master Beneficiary Record file, 100 percent data.

NOTE: The diagnosis for disabled adult children typically was not recorded on the Master Beneficiary Record until 1984. Many beneficiaries entitled before that date are still on the rolls today.

a. Data not shown to avoid disclosure of information for particular individuals.

b. Includes American Samoa, Guam, Northern Mariana Islands, and U.S. Virgin Islands.

CONTACT: Kevin Kulzer (410) 965-5366 or di.asr@ssa.gov.

Table 13.
Total monthly benefits, by state or other area, December 2006 (in thousands of dollars)

State or area	Total	Workers	Widow(er)s	Adult children
All areas	7,292,797	6,655,048	138,859	498,891
Alabama	184,231	169,627	4,303	10,301
Alaska	10,612	9,928	175	508
Arizona	135,413	126,998	2,146	6,269
Arkansas	109,324	101,511	2,394	5,419
California	621,044	568,124	9,995	42,924
Colorado	79,069	73,873	1,150	4,046
Connecticut	76,264	68,459	994	6,811
Delaware	23,981	22,290	330	1,361
District of Columbia	9,858	8,939	145	774
Florida	428,667	398,891	7,304	22,472
Georgia	213,662	196,703	4,377	12,582
Hawaii	21,251	19,340	351	1,561
Idaho	32,326	29,934	580	1,812
Illinois	259,639	232,149	4,942	22,547
Indiana	161,231	145,727	3,300	12,204
Iowa	64,797	57,946	1,062	5,789
Kansas	58,029	52,848	1,000	4,181
Kentucky	174,481	160,184	4,669	9,629
Louisiana	125,927	111,734	3,809	10,383
Maine	46,890	43,311	752	2,827
Maryland	104,315	95,246	1,607	7,462
Massachusetts	167,760	153,378	2,223	12,160
Michigan	289,663	259,497	5,922	24,244
Minnesota	100,892	91,881	1,159	7,852
Mississippi	110,257	100,931	2,783	6,543
Missouri	174,634	160,476	3,448	10,709
Montana	22,258	20,411	385	1,462
Nebraska	34,689	31,409	507	2,773
Nevada	51,441	48,717	825	1,899
New Hampshire	37,651	35,196	458	1,998
New Jersey	186,760	169,485	2,747	14,529
New Mexico	48,541	45,099	848	2,594
New York	476,185	428,782	7,883	39,520
North Carolina	269,733	250,414	4,744	14,575
North Dakota	12,013	10,597	175	1,241
Ohio	271,499	241,008	6,435	24,056
Oklahoma	100,803	92,611	2,284	5,907
Oregon	84,231	77,572	1,465	5,194
Pennsylvania	340,059	306,389	6,740	26,930
Rhode Island	30,561	28,092	420	2,048

(Continued)

All Disabled Beneficiaries

Table 13.
Total monthly benefits, by state or other area, December 2006 (in thousands of dollars)—Continued

State or area	Total	Workers	Widow(er)s	Adult children
South Carolina	143,271	132,161	2,891	8,218
South Dakota	15,015	13,521	223	1,271
Tennessee	195,640	179,670	4,538	11,432
Texas	434,123	397,643	9,743	26,737
Utah	34,258	31,301	512	2,444
Vermont	16,854	15,350	266	1,238
Virginia	185,598	170,906	3,666	11,026
Washington	139,990	129,056	2,291	8,643
West Virginia	93,999	85,200	2,736	6,063
Wisconsin	126,075	113,212	1,746	11,117
Wyoming	10,443	9,666	158	619
Outlying areas				
American Samoa	907	837	24	46
Guam	1,148	1,061	22	65
Northern Mariana Islands	148	129	3	16
Puerto Rico	129,016	116,996	2,687	9,332
U.S. Virgin Islands	1,821	1,613	41	167
Foreign countries	13,854	11,018	479	2,357

SOURCE: Social Security Administration, Disabled Beneficiaries and Dependents Master Beneficiary Record file, 100 percent data.

NOTES: Unnegotiated checks not deducted.

Data exclude lump-sum death payments.

CONTACT: Kevin Kulzer (410) 965-5366 or di.asr@ssa.gov.

Table 14.
Number, by type of representative payee, December 2006

Type of payee	Total	Workers	Widow(er)s	Adult children
All disabled beneficiaries	7,803,692	6,806,918	220,178	776,596
Without payee	6,387,236	6,010,946	205,874	170,416
With payee				
Parent (natural, adoptive, or stepparent)	479,039	233,222	580	245,237
Spouse	148,863	148,032	84	747
Child (natural, adoptive, or stepchild)	52,679	44,949	6,116	1,614
Other relative	273,894	143,656	3,322	126,916
Nonmental institution	139,347	61,214	1,662	76,471
Mental institution	100,620	29,368	332	70,920
Social agency	101,402	50,435	712	50,255
Public official	11,255	7,088	145	4,022
Financial organization	5,133	3,744	44	1,345
Other	104,224	74,264	1,307	28,653

SOURCE: Social Security Administration, Disabled Beneficiaries and Dependents Master Beneficiary Record file, 100 percent data.

CONTACT: Kevin Kulzer (410) 965-5366 or di.asr@ssa.gov.

All Disabled Beneficiaries

Table 15.
Representative payment, by sex and diagnostic group, December 2006

Diagnostic group	Workers			Widow(er)s			Adult children		
	Total	Number with payee	Percentage with payee	Total	Number with payee	Percentage with payee	Total	Number with payee	Percentage with payee
All disabled beneficiaries									
Total	6,806,918	795,972	11.7	220,178	14,304	6.5	776,596	606,180	78.1
Congenital anomalies	11,544	1,749	15.2	283	7	2.5	9,298	6,502	69.9
Endocrine, nutritional, and metabolic diseases	258,310	4,518	1.7	17,675	318	1.8	2,818	723	25.7
Infectious and parasitic diseases	113,410	3,681	3.2	1,891	53	2.8	3,248	1,918	59.1
Injuries	292,161	25,127	8.6	5,575	178	3.2	10,069	4,051	40.2
Mental disorders									
Retardation	329,540	184,259	55.9	9,721	2,497	25.7	356,722	315,279	88.4
Other	1,947,274	468,127	24.0	52,686	8,186	15.5	121,799	79,206	65.0
Neoplasms	196,075	3,173	1.6	4,534	72	1.6	1,951	1,085	55.6
Diseases of the—									
Blood and blood-forming organs	17,080	412	2.4	365	10	2.7	2,022	398	19.7
Circulatory system	635,807	32,086	5.0	21,048	880	4.2	3,532	1,728	48.9
Digestive system	106,714	3,035	2.8	2,561	60	2.3	632	127	20.1
Genitourinary system	114,079	1,418	1.2	1,946	38	2.0	1,930	403	20.9
Musculoskeletal system and connective tissue	1,765,058	19,247	1.1	64,590	633	1.0	5,523	1,148	20.8
Nervous system and sense organs	649,336	31,147	4.8	15,965	627	3.9	73,122	39,155	53.5
Respiratory system	208,991	2,688	1.3	10,892	120	1.1	1,018	342	33.6
Skin and subcutaneous tissue	16,343	210	1.3	513	4	0.8	279	52	18.6
Other	14,384	621	4.3	291	9	3.1	1,361	875	64.3
Unknown	130,812	14,474	11.1	9,642	612	6.3	181,272	153,188	84.5
Men									
Subtotal	3,643,121	517,479	14.2	8,115	634	7.8	424,184	338,860	79.9
Congenital anomalies	5,918	1,018	17.2	11	0	0	4,799	3,476	72.4
Endocrine, nutritional, and metabolic diseases	113,451	2,591	2.3	368	13	3.5	1,287	389	30.2
Infectious and parasitic diseases	83,082	2,958	3.6	101	5	5.0	1,738	1,074	61.8
Injuries	202,246	19,163	9.5	398	16	4.0	6,993	2,779	39.7
Mental disorders									
Retardation	210,488	121,384	57.7	378	100	26.5	192,169	173,262	90.2
Other	977,700	300,074	30.7	1,696	327	19.3	76,907	53,403	69.4
Neoplasms	93,976	1,911	2.0	161	3	1.9	1,094	617	56.4
Diseases of the—									
Blood and blood-forming organs	7,557	249	3.3	18	0	0	1,015	239	23.5
Circulatory system	424,489	20,737	4.9	1,235	53	4.3	1,889	962	50.9
Digestive system	57,682	2,215	3.8	145	6	4.1	314	72	22.9
Genitourinary system	68,364	950	1.4	120	3	2.5	1,009	231	22.9
Musculoskeletal system and connective tissue	895,862	12,465	1.4	2,183	36	1.6	2,379	627	26.4
Nervous system and sense organs	320,968	19,246	6.0	568	25	4.4	38,875	21,580	55.5
Respiratory system	102,829	1,723	1.7	355	14	3.9	443	189	42.7
Skin and subcutaneous tissue	6,797	126	1.9	18	0	0	120	30	25.0
Other	6,642	436	6.6	10	0	0	753	521	69.2
Unknown	65,070	10,233	15.7	350	33	9.4	92,400	79,409	85.9

(Continued)

Table 15.
Representative payment, by sex and diagnostic group, December 2006—Continued

Diagnostic group	Workers			Widow(er)s			Adult children		
	Total	Number with payee	Percentage with payee	Total	Number with payee	Percentage with payee	Total	Number with payee	Percentage with payee
Women									
Subtotal	3,163,797	278,493	8.8	212,063	13,670	6.4	352,412	267,320	75.9
Congenital anomalies	5,626	731	13.0	272	7	2.6	4,499	3,026	67.3
Endocrine, nutritional, and metabolic diseases	144,859	1,927	1.3	17,307	305	1.8	1,531	334	21.8
Infectious and parasitic diseases	30,328	723	2.4	1,790	48	2.7	1,510	844	55.9
Injuries	89,915	5,964	6.6	5,177	162	3.1	3,076	1,272	41.4
Mental disorders									
Retardation	119,052	62,875	52.8	9,343	2,397	25.7	164,553	142,017	86.3
Other	969,574	168,053	17.3	50,990	7,859	15.4	44,892	25,803	57.5
Neoplasms	102,099	1,262	1.2	4,373	69	1.6	857	468	54.6
Diseases of the—									
Blood and blood-forming organs	9,523	163	1.7	347	10	2.9	1,007	159	15.8
Circulatory system	211,318	11,349	5.4	19,813	827	4.2	1,643	766	46.6
Digestive system	49,032	820	1.7	2,416	54	2.2	318	55	17.3
Genitourinary system	45,715	468	1.0	1,826	35	1.9	921	172	18.7
Musculoskeletal system and connective tissue	869,196	6,782	0.8	62,407	597	1.0	3,144	521	16.6
Nervous system and sense organs	328,368	11,901	3.6	15,397	602	3.9	34,247	17,575	51.3
Respiratory system	106,162	965	0.9	10,537	106	1.0	575	153	26.6
Skin and subcutaneous tissue	9,546	84	0.9	495	4	0.8	159	22	13.8
Other	7,742	185	2.4	281	9	3.2	608	354	58.2
Unknown	65,742	4,241	6.5	9,292	579	6.2	88,872	73,779	83.0

SOURCE: Social Security Administration, Disabled Beneficiaries and Dependents Master Beneficiary Record file, 100 percent data.

NOTE: The diagnosis for disabled adult children typically was not recorded on the Master Beneficiary Record until 1984. Many beneficiaries entitled before that date are still on the rolls today.

CONTACT: Kevin Kulzer (410) 965-5366 or di.asr@ssa.gov.

All Disabled Beneficiaries

Table 16.
Percentage distribution of disabled workers, by state or other area and monthly benefit,
December 2006

State or area	Number	Percentage distribution by dollar amount of monthly benefit							Monthly benefit (dollars)	
		Total	Less than 400.00	400.00–599.90	600.00–799.90	800.00–999.90	1,000.00–1,199.90	1,200.00–or more	Average	Median
All areas	6,806,918	100.0	5.8	11.2	22.7	18.8	13.8	27.7	977.70	905.70
Alabama	178,303	100.0	5.5	11.5	24.7	20.0	13.8	24.5	951.30	876.00
Alaska	10,253	100.0	6.8	12.1	23.3	17.6	13.3	26.9	968.30	879.00
Arizona	125,654	100.0	4.7	9.9	21.5	18.8	14.6	30.5	1,010.70	942.00
Arkansas	109,104	100.0	5.5	11.9	24.5	21.0	15.0	22.1	930.40	871.50
California	570,177	100.0	6.7	11.4	21.1	17.1	13.2	30.5	996.40	920.50
Colorado	75,874	100.0	5.5	11.5	22.8	19.0	14.0	27.3	973.60	900.50
Connecticut	67,295	100.0	4.6	10.0	21.5	18.6	14.3	31.0	1,017.30	944.50
Delaware	21,702	100.0	4.5	9.6	20.9	18.6	14.6	31.8	1,027.10	957.50
District of Columbia	10,263	100.0	7.1	14.3	28.4	20.1	13.0	17.1	871.00	801.00
Florida	407,193	100.0	5.0	10.9	23.1	19.3	14.3	27.4	979.60	906.00
Georgia	203,994	100.0	4.9	10.8	23.3	20.7	15.1	25.2	964.30	899.50
Hawaii	19,211	100.0	4.8	10.4	21.4	18.1	15.3	30.1	1,006.70	943.00
Idaho	31,357	100.0	6.6	12.3	23.1	18.0	13.7	26.3	954.60	881.00
Illinois	231,653	100.0	5.8	10.9	21.6	17.8	13.6	30.5	1,002.10	926.00
Indiana	148,744	100.0	5.7	11.3	22.5	18.6	14.0	27.8	979.70	906.00
Iowa	61,805	100.0	6.7	12.4	23.9	18.7	13.5	24.8	937.60	867.00
Kansas	55,525	100.0	6.0	12.0	23.5	18.9	14.2	25.4	951.80	882.00
Kentucky	167,339	100.0	6.7	12.4	22.9	18.0	13.2	26.7	957.20	881.50
Louisiana	114,683	100.0	7.1	11.6	22.4	17.4	12.5	28.9	974.30	894.00
Maine	48,000	100.0	6.4	13.2	26.1	20.7	13.6	20.0	902.30	835.00
Maryland	94,535	100.0	5.2	10.2	21.3	18.5	14.5	30.3	1,007.50	939.00
Massachusetts	158,861	100.0	5.1	11.3	24.1	19.7	13.9	25.8	965.50	888.00
Michigan	250,412	100.0	6.1	10.6	20.3	16.0	12.5	34.5	1,036.30	958.50
Minnesota	94,887	100.0	5.8	11.6	23.4	18.9	13.6	26.7	968.30	890.00
Mississippi	109,552	100.0	5.6	12.0	25.7	21.2	14.0	21.5	921.30	854.50
Missouri	168,295	100.0	5.8	11.8	24.1	19.3	13.8	25.3	953.50	878.50
Montana	21,604	100.0	6.1	12.6	24.0	18.9	13.1	25.3	944.80	872.00
Nebraska	33,921	100.0	6.1	12.7	24.8	19.3	14.3	22.7	925.90	859.00
Nevada	46,951	100.0	3.9	8.8	20.8	19.2	15.0	32.3	1,037.60	969.00
New Hampshire	35,568	100.0	4.2	9.5	22.9	20.8	15.3	27.2	989.50	923.50
New Jersey	158,607	100.0	4.2	9.3	19.6	17.6	13.8	35.6	1,068.60	992.00
New Mexico	48,089	100.0	7.0	12.2	23.6	19.2	13.7	24.4	937.80	868.50
New York	416,955	100.0	5.7	10.8	20.6	17.0	13.1	32.8	1,028.40	947.50
North Carolina	260,960	100.0	4.7	10.3	23.1	21.9	16.0	24.0	959.60	903.50
North Dakota	11,697	100.0	7.1	13.9	25.3	19.0	12.8	21.9	905.90	837.50
Ohio	251,744	100.0	7.4	12.9	22.6	17.0	12.6	27.5	957.40	876.50
Oklahoma	97,024	100.0	6.4	11.8	22.7	18.5	14.1	26.3	954.50	889.50
Oregon	78,853	100.0	5.7	11.6	22.2	18.1	13.5	28.9	983.80	909.00
Pennsylvania	309,581	100.0	5.9	10.8	21.7	18.2	14.0	29.3	989.70	920.50
Rhode Island	29,738	100.0	5.3	12.1	25.0	20.0	13.5	24.2	944.70	868.00

(Continued)

Table 16.
Percentage distribution of disabled workers, by state or other area and monthly benefit,
December 2006—Continued

State or area	Number	Percentage distribution by dollar amount of monthly benefit							Monthly benefit (dollars)	
		Total	Less than 400.00	400.00–599.90	600.00–799.90	800.00–999.90	1,000.00–1,199.90	1,200.00–or more	Average	Median
South Carolina	135,816	100.0	4.4	9.9	22.5	21.5	16.2	25.5	973.10	916.50
South Dakota	15,044	100.0	7.3	13.8	25.5	18.8	13.8	20.7	898.80	830.50
Tennessee	190,613	100.0	5.3	11.7	24.5	20.6	14.6	23.4	942.60	876.00
Texas	410,805	100.0	6.2	11.1	22.8	19.0	14.2	26.8	968.00	899.00
Utah	32,280	100.0	6.1	12.7	23.2	17.3	13.0	27.6	969.70	883.50
Vermont	16,673	100.0	5.9	12.3	25.0	20.8	14.6	21.4	920.60	859.00
Virginia	173,567	100.0	5.2	10.3	22.1	19.7	14.9	27.7	984.70	918.00
Washington	130,099	100.0	5.8	11.4	22.4	17.9	13.1	29.5	992.00	908.50
West Virginia	83,129	100.0	6.6	10.6	19.7	16.3	13.1	33.7	1,024.90	957.50
Wisconsin	116,154	100.0	6.1	11.6	22.6	18.3	13.4	28.1	974.70	899.50
Wyoming	9,937	100.0	6.1	12.6	23.1	17.4	12.4	28.4	972.70	882.00
Outlying areas										
American Samoa	1,114	100.0	12.0	20.6	30.0	16.5	12.5	8.3	751.50	702.00
Guam	1,248	100.0	11.7	13.1	26.4	17.3	13.8	17.7	849.90	791.80
Northern Mariana Islands	198	100.0	17.7	28.8	30.8	10.6	6.6	5.6	649.90	615.50
Puerto Rico	139,922	100.0	4.8	13.6	34.9	23.0	11.5	12.2	836.20	779.20
U.S. Virgin Islands	1,638	100.0	4.9	10.9	21.1	20.1	15.4	27.6	984.70	925.00
Foreign countries	12,718	100.0	14.4	12.5	20.6	17.7	12.8	22.0	866.40	824.50

SOURCE: Social Security Administration, Disabled Beneficiaries and Dependents Master Beneficiary Record file, 100 percent data.

CONTACT: Kevin Kulzer (410) 965-5366 or di.asr@ssa.gov.

All Disabled Beneficiaries

Table 17.
Percentage distribution of disabled widow(er)s, by state or other area and monthly benefit,
December 2006

State or area	Number	Percentage distribution by dollar amount of monthly benefit										Monthly benefit (dollars)	
		Total	Less than 200.00	200.00–299.90	300.00–399.90	400.00–499.90	500.00–599.90	600.00–699.90	700.00–799.90	800.00–899.90	900.00 or more	Average	Median
All areas	220,178	100.0	8.9	7.9	9.5	12.0	11.8	10.8	9.4	7.9	21.8	630.70	601.10
Alabama	7,261	100.0	10.5	8.8	10.2	12.1	12.3	11.9	9.5	7.5	17.2	592.60	567.00
Alaska	245	100.0	4.1	6.1	8.2	9.4	11.0	11.8	9.8	7.8	31.8	714.20	692.00
Arizona	3,258	100.0	7.6	7.7	8.9	12.0	11.8	10.1	8.7	8.8	24.6	658.70	620.50
Arkansas	4,192	100.0	12.0	9.4	10.3	11.9	12.6	11.3	9.6	7.6	15.3	571.00	550.00
California	14,720	100.0	6.5	6.8	8.4	11.8	11.7	10.3	9.2	8.3	26.9	679.00	645.00
Colorado	1,799	100.0	8.4	7.4	9.9	11.1	11.8	11.6	9.2	8.2	22.3	639.10	611.00
Connecticut	1,587	100.0	8.1	7.3	9.7	14.7	11.8	11.0	8.9	7.7	20.7	626.10	585.00
Delaware	531	100.0	9.8	6.6	10.0	11.7	12.8	11.5	9.8	6.6	21.3	620.80	595.00
District of Columbia	239	100.0	6.7	8.4	10.0	13.4	13.0	13.8	11.3	6.7	16.7	605.90	592.00
Florida	12,046	100.0	9.8	8.3	10.2	12.3	12.3	10.7	9.9	7.4	19.0	606.40	575.00
Georgia	7,676	100.0	12.1	9.4	10.6	12.8	12.7	10.5	8.9	6.9	16.0	570.20	537.00
Hawaii	516	100.0	6.4	5.8	8.1	13.2	9.5	11.6	9.9	9.3	26.2	679.40	648.10
Idaho	857	100.0	6.8	6.8	8.5	13.0	9.8	10.6	9.5	8.5	26.6	676.60	654.50
Illinois	7,439	100.0	7.8	7.3	8.8	11.0	11.3	10.5	9.3	7.9	26.2	664.40	634.00
Indiana	5,021	100.0	8.2	7.1	9.4	11.2	10.4	11.0	9.3	8.1	25.1	657.20	634.00
Iowa	1,726	100.0	8.1	8.3	10.8	10.8	11.6	13.4	10.3	7.3	19.5	615.10	603.00
Kansas	1,615	100.0	8.9	8.8	9.3	12.3	11.8	10.5	9.8	8.4	20.2	619.00	587.00
Kentucky	7,202	100.0	7.6	7.1	9.4	11.8	11.8	11.3	9.5	8.2	23.2	648.20	618.00
Louisiana	5,642	100.0	6.8	5.9	8.1	11.4	12.6	11.3	9.3	8.8	25.8	675.20	645.00
Maine	1,264	100.0	9.3	7.9	11.2	15.0	11.8	10.3	8.9	8.4	17.2	594.70	555.50
Maryland	2,439	100.0	7.5	7.2	8.2	11.1	12.8	10.7	9.9	7.8	24.7	658.70	628.00
Massachusetts	3,479	100.0	6.8	8.1	9.5	13.2	12.9	10.6	10.0	7.7	21.2	639.00	596.50
Michigan	8,270	100.0	6.4	6.2	7.7	9.8	10.3	10.1	9.3	8.9	31.3	716.10	694.00
Minnesota	1,842	100.0	8.6	7.9	10.0	11.4	12.2	11.4	11.1	7.5	19.9	629.50	599.50
Mississippi	4,821	100.0	10.8	9.3	10.6	13.2	12.5	11.4	9.1	7.1	16.0	577.30	544.50
Missouri	5,711	100.0	10.5	8.6	10.2	12.2	12.5	9.6	9.5	7.3	19.6	603.80	565.00
Montana	614	100.0	6.4	9.4	11.2	12.7	13.0	8.3	9.9	9.0	20.0	627.10	579.50
Nebraska	852	100.0	11.4	7.4	12.6	11.5	11.0	9.4	9.5	8.1	19.1	594.70	560.50
Nevada	1,220	100.0	7.6	7.0	9.6	10.4	10.7	10.1	9.2	8.4	27.1	676.60	642.50
New Hampshire	777	100.0	11.7	8.9	11.3	13.3	10.9	9.5	8.9	6.7	18.8	588.90	540.00
New Jersey	4,217	100.0	9.6	7.8	8.8	11.7	10.7	10.1	9.4	7.4	24.5	651.40	612.00
New Mexico	1,300	100.0	6.5	6.5	9.5	11.7	13.4	10.3	11.8	8.2	22.2	652.10	621.50
New York	12,251	100.0	8.3	7.3	9.0	12.0	12.3	10.5	9.9	8.0	22.7	643.40	611.00
North Carolina	8,947	100.0	14.7	11.3	12.0	12.6	11.9	10.2	8.1	6.0	13.1	530.20	494.00
North Dakota	302	100.0	11.6	8.9	10.9	11.6	12.9	11.6	6.3	8.3	17.9	580.60	558.00
Ohio	9,472	100.0	7.0	6.4	8.4	11.2	10.8	10.3	10.0	9.0	26.8	679.30	658.00
Oklahoma	3,679	100.0	9.1	7.4	9.7	12.5	13.0	10.8	8.6	8.0	20.8	620.90	586.00
Oregon	2,172	100.0	7.9	6.3	8.6	10.7	11.2	10.8	8.2	8.7	27.6	674.50	646.50
Pennsylvania	10,162	100.0	7.3	7.1	8.8	11.0	11.3	10.7	9.7	9.0	25.2	663.20	640.00
Rhode Island	713	100.0	10.7	8.7	11.5	11.5	13.6	9.7	8.1	8.4	17.8	589.40	555.00

(Continued)

Table 17.
Percentage distribution of disabled widow(er)s, by state or other area and monthly benefit,
December 2006—Continued

State or area	Number	Percentage distribution by dollar amount of monthly benefit										Monthly benefit (dollars)	
		Total	Less than 200.00	200.00–299.90	300.00–399.90	400.00–499.90	500.00–599.90	600.00–699.90	700.00–799.90	800.00–899.90	900.00 or more	Average	Median
South Carolina	5,283	100.0	13.4	9.8	11.4	12.9	12.4	11.4	8.4	6.2	14.0	547.30	522.00
South Dakota	392	100.0	8.7	10.5	12.0	14.8	12.0	14.8	7.4	4.6	15.3	569.50	544.00
Tennessee	7,888	100.0	11.6	9.9	10.3	12.6	11.9	10.8	9.1	7.5	16.3	575.30	546.00
Texas	15,211	100.0	8.3	7.7	9.1	12.2	11.5	11.2	9.5	7.9	22.7	640.50	611.00
Utah	749	100.0	6.3	6.9	8.4	11.9	11.5	9.2	11.2	7.7	26.8	683.60	662.00
Vermont	448	100.0	10.5	9.2	8.9	12.7	12.1	12.5	10.3	5.1	18.8	594.00	578.00
Virginia	5,900	100.0	10.4	8.1	9.5	12.3	10.7	10.3	9.4	8.2	21.3	621.30	591.00
Washington	3,303	100.0	5.8	6.1	9.6	10.1	10.2	10.9	10.4	9.4	27.6	693.70	673.00
West Virginia	3,886	100.0	5.6	6.2	7.5	10.0	10.8	11.5	10.4	8.8	29.2	703.90	685.50
Wisconsin	2,796	100.0	8.5	9.2	8.7	12.2	11.8	11.2	9.8	7.8	20.9	624.50	595.50
Wyoming	238	100.0	5.5	6.7	7.1	16.0	9.2	13.0	11.3	7.6	23.5	664.00	643.50
Outlying areas													
American Samoa	50	100.0	18.0	8.0	12.0	14.0	14.0	12.0	8.0	8.0	6.0	490.00	481.80
Guam	38	100.0	10.5	a	a	a	a	10.5	a	10.5	15.8	588.30	529.50
Northern Mariana Islands	9	100.0	0	a	a	a	a	0	a	0	0	365.20	340.00
Puerto Rico	5,090	100.0	10.7	11.4	10.6	16.7	14.8	11.3	8.8	6.1	9.5	527.90	503.80
U.S. Virgin Islands	62	100.0	6.5	4.8	4.8	12.9	9.7	22.6	9.7	8.1	21.0	663.10	647.30
Foreign countries	759	100.0	7.6	5.8	8.3	13.7	13.6	12.9	10.4	7.6	20.0	630.60	609.00

SOURCE: Social Security Administration, Disabled Beneficiaries and Dependents Master Beneficiary Record file, 100 percent data.

a. Data not shown to avoid disclosure of information for particular individuals.

CONTACT: Kevin Kulzer (410) 965-5366 or di.asr@ssa.gov.

All Disabled Beneficiaries

Table 18.
Percentage distribution of disabled adult children, by state or other area and monthly benefit,
December 2006

State or area	Number	Percentage distribution by dollar amount of monthly benefit										Monthly benefit (dollars)	
		Total	Less than 200.00	200.00–299.90	300.00–399.90	400.00–499.90	500.00–599.90	600.00–699.90	700.00–799.90	800.00–899.90	900.00 or more	Average	Median
All areas	776,596	100.0	5.3	5.2	10.4	12.2	12.7	12.4	13.6	9.9	18.3	642.40	634.50
Alabama	17,599	100.0	6.3	6.6	13.9	14.5	14.2	12.4	11.1	8.3	12.7	585.30	561.00
Alaska	796	100.0	5.9	5.2	14.2	11.7	10.8	13.2	10.1	9.2	19.8	638.60	621.80
Arizona	9,452	100.0	5.0	4.8	8.7	11.1	12.6	12.8	14.3	10.5	20.3	663.30	663.00
Arkansas	9,567	100.0	7.1	6.6	13.3	16.1	15.4	13.0	10.5	7.6	10.4	566.40	544.00
California	64,925	100.0	5.5	5.0	9.1	11.3	12.1	11.9	14.2	10.6	20.4	661.10	658.00
Colorado	6,140	100.0	5.0	4.6	9.4	11.7	12.2	12.1	14.5	10.4	20.0	659.00	658.00
Connecticut	9,523	100.0	3.7	3.8	7.1	8.5	10.1	12.5	16.8	12.0	25.4	715.30	724.00
Delaware	1,950	100.0	3.1	3.2	8.4	9.8	11.8	13.5	15.9	11.2	23.1	697.90	702.50
District of Columbia	1,360	100.0	6.4	6.7	15.7	15.1	15.7	10.9	11.8	7.6	10.1	568.90	534.50
Florida	35,187	100.0	5.5	5.2	9.5	12.4	13.5	13.0	13.4	9.9	17.4	638.60	630.00
Georgia	20,986	100.0	5.1	5.5	13.2	15.2	15.0	12.8	11.7	8.1	13.4	599.60	572.00
Hawaii	2,373	100.0	3.6	4.1	10.2	10.9	13.1	14.8	14.6	11.3	17.4	657.70	650.00
Idaho	2,806	100.0	5.5	4.5	9.2	11.2	14.1	13.6	13.8	10.8	17.3	645.80	639.00
Illinois	32,442	100.0	4.0	4.0	7.9	10.1	11.3	12.4	15.2	11.5	23.6	695.00	701.50
Indiana	17,501	100.0	3.3	3.6	7.4	9.9	11.5	13.1	16.6	11.6	23.0	697.30	706.00
Iowa	8,573	100.0	3.5	3.6	7.6	11.7	13.5	13.6	15.3	11.4	19.9	675.30	675.00
Kansas	6,236	100.0	3.7	4.0	8.7	11.4	13.4	12.6	15.4	11.2	19.6	670.50	669.00
Kentucky	16,684	100.0	7.5	7.2	13.8	15.0	13.1	11.6	11.3	7.9	12.6	577.10	548.00
Louisiana	17,718	100.0	7.6	7.2	13.3	14.7	13.3	11.3	10.6	7.7	14.4	586.00	553.50
Maine	4,707	100.0	6.9	5.4	10.5	14.0	14.7	13.2	13.4	9.2	12.8	600.60	590.00
Maryland	10,977	100.0	3.4	3.9	9.1	11.1	13.2	13.1	14.6	10.5	21.2	679.80	675.50
Massachusetts	18,420	100.0	5.5	4.8	9.4	10.9	11.9	12.3	14.0	11.2	20.0	660.10	659.00
Michigan	33,677	100.0	3.6	3.3	6.5	8.6	10.6	12.0	16.4	12.6	26.5	719.90	730.50
Minnesota	11,691	100.0	4.1	3.5	9.0	11.6	12.5	13.0	15.2	10.9	20.2	671.60	671.00
Mississippi	12,127	100.0	8.0	8.5	16.6	17.0	13.6	11.4	9.1	6.2	9.7	539.50	500.00
Missouri	16,687	100.0	5.3	4.8	9.9	12.7	13.3	13.0	13.5	10.0	17.7	641.80	633.00
Montana	2,227	100.0	3.6	4.2	8.1	13.7	13.4	13.9	14.5	10.4	18.1	656.40	648.00
Nebraska	4,322	100.0	4.4	4.5	9.8	12.1	14.4	14.7	14.3	9.9	15.9	641.70	632.30
Nevada	2,711	100.0	3.5	3.4	8.0	9.9	12.1	13.5	14.4	10.9	24.3	700.40	695.00
New Hampshire	2,964	100.0	4.3	3.9	7.5	11.1	12.7	14.2	14.7	12.6	19.2	674.00	677.50
New Jersey	20,236	100.0	3.4	3.5	7.3	9.1	10.9	12.2	15.4	12.2	26.0	718.00	723.00
New Mexico	4,489	100.0	7.6	8.0	13.3	14.0	13.3	11.8	11.0	7.7	13.3	577.80	549.00
New York	57,425	100.0	3.9	3.9	8.2	10.5	11.6	12.5	15.7	11.5	22.2	688.20	694.00
North Carolina	24,537	100.0	5.2	5.7	13.1	15.3	15.2	13.2	11.9	8.2	12.3	594.00	569.00
North Dakota	1,988	100.0	4.0	5.0	10.0	14.5	15.0	15.9	12.5	8.9	14.1	624.40	608.00
Ohio	35,269	100.0	4.2	4.1	8.2	10.4	11.7	12.8	15.0	11.2	22.3	682.10	688.00
Oklahoma	9,563	100.0	5.0	5.4	11.4	14.4	13.9	12.9	12.9	9.2	14.9	617.70	597.00
Oregon	7,571	100.0	4.3	3.8	7.7	9.9	11.8	13.3	15.1	11.8	22.3	686.10	693.00
Pennsylvania	39,931	100.0	4.5	4.1	7.9	10.5	12.2	13.5	15.7	11.0	20.6	674.40	681.00
Rhode Island	3,188	100.0	5.1	5.5	10.1	11.2	12.4	14.1	13.5	10.4	17.7	642.50	639.80

(Continued)

Table 18.
Percentage distribution of disabled adult children, by state or other area and monthly benefit,
December 2006—Continued

State or area	Number	Percentage distribution by dollar amount of monthly benefit										Monthly benefit (dollars)	
		Total	Less than 200.00	200.00–299.90	300.00–399.90	400.00–499.90	500.00–599.90	600.00–699.90	700.00–799.90	800.00–899.90	900.00 or more	Average	Median
South Carolina	13,715	100.0	4.7	5.3	13.1	15.3	15.7	12.9	12.0	8.2	12.8	599.20	572.00
South Dakota	2,103	100.0	5.1	4.7	12.3	15.9	14.2	13.2	13.2	8.8	12.7	604.50	584.00
Tennessee	19,103	100.0	5.3	5.3	13.5	15.1	14.3	13.2	11.8	8.3	13.1	598.50	572.50
Texas	43,723	100.0	6.4	6.2	11.8	13.8	13.3	12.2	11.8	8.5	15.9	611.50	588.00
Utah	3,600	100.0	4.6	4.7	7.0	9.9	13.1	13.4	15.4	11.5	20.4	679.00	681.00
Vermont	1,952	100.0	4.4	4.0	8.9	13.8	15.3	14.9	13.6	10.1	15.1	634.30	620.00
Virginia	17,830	100.0	5.2	5.3	11.7	13.9	13.6	13.5	12.5	9.1	15.1	618.40	602.00
Washington	12,484	100.0	4.2	3.9	7.7	10.2	11.3	12.4	15.3	11.7	23.3	692.30	702.00
West Virginia	10,099	100.0	6.3	5.9	12.2	14.2	13.3	12.8	13.4	8.6	13.4	600.40	585.00
Wisconsin	16,193	100.0	3.9	3.6	7.5	10.2	12.0	13.1	16.6	11.4	21.6	686.50	696.00
Wyoming	911	100.0	3.7	3.8	7.1	13.4	13.3	13.0	13.2	10.5	22.0	679.30	665.00
Outlying areas													
American Samoa	100	100.0	10.0	13.0	18.0	23.0	19.0	a	a	a	a	456.40	424.30
Guam	145	100.0	16.6	17.9	18.6	13.8	10.3	4.8	6.2	4.1	7.6	449.70	385.50
Northern Mariana Islands	48	100.0	27.1	29.2	10.4	14.6	8.3	a	a	a	a	339.10	283.00
Puerto Rico	22,710	100.0	14.6	14.7	26.1	18.2	11.1	6.4	4.1	2.2	2.6	410.90	373.00
U.S. Virgin Islands	310	100.0	4.8	8.4	13.2	18.7	19.0	14.5	11.3	4.8	5.2	538.20	524.00
Foreign countries	5,045	100.0	16.6	10.6	16.7	15.1	12.3	9.2	9.3	4.2	6.0	467.20	438.00

SOURCE: Social Security Administration, Disabled Beneficiaries and Dependents Master Beneficiary Record file, 100 percent data.

a. Data not shown to avoid disclosure of information for particular individuals.

CONTACT: Kevin Kulzer (410) 965-5366 or di.asr@ssa.gov.

Disabled Workers

Table 19.
Percentage distribution, by sex and age, December 1960–2006, selected years

Year	Number (thousands)	Percentage distribution									Average age
		Total, all ages	Under 30	30–34	35–39 ^a	40–44	45–49	50–54	55–59	60–FRA	
All disabled workers^b											
1996	4,400	100.0	3.6	5.6	9.0	11.6	13.8	15.5	18.6	22.4	50.0
1997	4,508	100.0	3.2	5.1	8.6	11.6	13.7	16.1	19.2	22.4	50.3
1998	4,699	100.0	3.0	4.8	8.3	11.6	13.8	16.5	19.7	22.4	50.5
1999	4,879	100.0	2.8	4.4	8.0	11.5	14.0	17.0	20.0	22.3	50.6
2000	5,042	100.0	2.7	4.1	7.6	11.4	14.1	17.6	20.3	22.3	50.8
2001	5,268	100.0	2.8	4.0	7.2	11.1	14.1	17.7	20.7	22.4	50.9
2002	5,540	100.0	3.0	3.8	6.7	10.8	14.1	17.5	21.3	22.7	51.0
2003	5,869	100.0	3.1	3.7	6.3	10.4	14.0	17.3	21.5	23.7	51.3
2004	6,197	100.0	3.1	3.6	5.9	10.0	13.8	17.2	21.8	24.5	51.5
2005	6,519	100.0	3.1	3.4	5.7	9.5	13.6	17.2	22.3	25.2	51.8
2006	6,807	100.0	3.0	3.3	5.5	9.0	13.3	17.3	22.3	26.4	52.1
Men											
1960	356	100.0	0.5	a	3.3	3.0	4.9	16.6	26.7	44.9	57.3
1965	734	100.0	1.0	a	7.5	7.6	10.4	15.4	24.7	33.3	54.4
1970	1,069	100.0	3.3	a	6.8	6.9	10.9	15.2	23.2	33.7	53.9
1975	1,711	100.0	4.6	a	7.5	6.2	9.7	15.8	23.2	33.0	53.5
1980	1,928	100.0	4.1	a	9.6	6.0	8.9	14.3	24.0	33.1	52.9
1981	--	--	--	--	--	--	--	--	--	--	--
1982	1,746	100.0	4.0	a	9.7	5.8	7.8	13.6	23.6	35.5	53.2
1983	1,731	100.0	4.2	a	10.4	6.3	8.0	13.0	23.1	35.0	52.9
1984	1,748	100.0	4.4	a	11.3	6.8	8.3	12.8	22.2	34.2	52.5
1985	1,785	100.0	4.6	a	12.3	7.3	8.6	12.9	21.4	32.9	51.9
1986	1,827	100.0	4.9	a	13.3	7.9	8.9	12.7	20.7	31.5	51.4
1987	1,857	100.0	4.8	a	13.8	8.5	9.4	12.5	20.1	30.8	51.1
1988	1,869	100.0	4.7	a	14.3	9.0	9.8	12.7	19.6	29.9	50.9
1989	1,906	100.0	4.5	a	14.7	9.6	10.3	12.7	19.4	28.8	50.7
1990	1,965	100.0	4.5	a	15.2	10.3	10.7	12.7	19.1	27.5	50.4
1991	2,066	100.0	4.5	a	15.6	10.7	11.2	13.0	18.6	26.4	50.1
1992	2,221	100.0	4.6	a	16.0	11.0	12.0	13.4	18.0	25.0	49.9
1993	2,358	100.0	4.6	a	16.2	11.2	12.3	13.9	17.9	23.9	49.6
1994	2,476	100.0	4.3	a	16.1	11.4	12.8	14.2	17.8	23.4	49.6
1995	2,573	100.0	4.0	a	15.5	11.5	13.4	14.5	18.0	23.2	49.7
1996	2,653	100.0	3.7	5.7	9.2	11.6	13.7	15.0	18.3	22.9	50.0
1997	2,667	100.0	3.3	5.2	8.7	11.6	13.6	15.6	18.9	23.0	50.3
1998	2,737	100.0	3.1	4.8	8.4	11.6	13.7	16.1	19.3	23.0	50.5
1999	2,801	100.0	2.8	4.5	8.1	11.6	13.8	16.7	19.7	22.9	50.7
2000	2,856	100.0	2.8	4.2	7.6	11.4	13.9	17.3	20.0	22.8	50.8
2001	2,948	100.0	2.9	4.0	7.2	11.2	14.0	17.5	20.5	23.0	51.0
2002	3,067	100.0	3.1	3.8	6.7	10.8	14.0	17.3	21.1	23.2	51.1
2003	3,221	100.0	3.2	3.6	6.3	10.4	13.9	17.1	21.4	24.1	51.3
2004	3,373	100.0	3.2	3.4	5.8	10.0	13.7	17.0	21.9	25.0	51.6
2005	3,517	100.0	3.2	3.3	5.5	9.4	13.5	17.0	22.4	25.7	51.9
2006	3,643	100.0	3.1	3.2	5.3	8.9	13.2	17.0	22.4	27.0	52.2

(Continued)

Table 19.
Percentage distribution, by sex and age, December 1960–2006, selected years—Continued

Year	Number (thousands)	Percentage distribution									Average age
		Total, all ages	Under 30	30–34	35–39 ^a	40–44	45–49	50–54	55–59	60–FRA	
Women											
1960	99	100.0	0.3	a	3.2	3.2	5.3	19.4	31.4	37.2	56.7
1965	254	100.0	0.6	a	5.4	6.3	9.8	16.2	27.3	34.3	55.2
1970	424	100.0	1.9	a	5.1	5.6	10.1	15.9	26.0	35.3	55.0
1975	778	100.0	3.3	a	6.1	5.3	9.0	16.3	25.5	34.5	54.4
1980	931	100.0	3.4	a	8.2	5.3	8.2	14.4	25.4	35.0	53.7
1981	--	--	--	--	--	--	--	--	--	--	--
1982	858	100.0	3.3	a	8.5	5.1	7.2	13.7	25.2	37.0	53.9
1983	838	100.0	3.5	a	9.3	5.7	7.5	12.9	24.3	36.8	53.6
1984	849	100.0	3.7	a	10.2	6.3	7.8	12.8	23.2	36.0	53.2
1985	872	100.0	3.8	a	11.2	6.9	8.3	12.9	22.3	34.6	52.6
1986	902	100.0	4.1	a	12.1	7.6	8.8	12.9	21.6	32.9	52.0
1987	929	100.0	4.2	a	12.7	8.2	9.4	12.9	20.9	31.7	51.7
1988	952	100.0	4.0	a	13.1	8.7	9.9	13.2	20.6	30.5	51.4
1989	989	100.0	4.0	a	13.5	9.2	10.6	13.4	20.1	29.2	51.1
1990	1,046	100.0	3.9	a	14.0	9.8	11.1	13.4	19.9	27.9	50.8
1991	1,133	100.0	4.0	a	14.3	10.3	11.6	13.8	19.4	26.5	50.5
1992	1,252	100.0	4.3	a	14.6	10.7	12.2	14.3	18.8	25.0	50.1
1993	1,371	100.0	4.3	a	14.9	11.0	12.6	14.8	18.9	23.5	49.9
1994	1,491	100.0	4.1	a	14.8	11.2	13.1	15.3	18.7	22.8	49.9
1995	1,614	100.0	3.8	a	14.5	11.5	13.6	15.7	18.8	22.2	49.9
1996	1,747	100.0	3.5	5.4	8.7	11.6	13.9	16.2	19.1	21.7	50.1
1997	1,842	100.0	3.1	5.0	8.4	11.6	13.9	16.7	19.6	21.5	50.3
1998	1,961	100.0	2.9	4.7	8.2	11.5	14.0	17.0	20.1	21.5	50.5
1999	2,078	100.0	2.7	4.3	7.9	11.5	14.2	17.5	20.5	21.4	50.6
2000	2,186	100.0	2.7	4.1	7.5	11.3	14.3	17.9	20.7	21.6	50.8
2001	2,320	100.0	2.8	4.0	7.1	11.1	14.3	18.0	21.1	21.7	50.9
2002	2,472	100.0	2.9	3.9	6.8	10.8	14.3	17.7	21.5	22.1	51.0
2003	2,647	100.0	3.0	3.8	6.4	10.5	14.2	17.6	21.6	23.0	51.2
2004	2,824	100.0	3.0	3.7	6.0	10.2	14.0	17.5	21.8	23.8	51.4
2005	3,002	100.0	2.9	3.5	5.8	9.7	13.7	17.6	22.2	24.5	51.7
2006	3,164	100.0	2.8	3.4	5.6	9.2	13.5	17.6	22.2	25.7	52.0

SOURCES: Social Security Administration, *Annual Statistical Supplement to the Social Security Bulletin*, Table 5.D4 from 1960 to 1995; data for 1988 and 1990 to 1995 are based on a 10 percent sample file from the Master Beneficiary Record; Social Security Disability Insurance Beneficiaries, 100 percent data, from 1996 to 2000; beginning with 2001, Disabled Beneficiaries and Dependents Master Beneficiary Record file, 100 percent data.

NOTE: FRA = full retirement age; -- = not available.

a. Ages 30–34 were grouped with ages 35–39 before 1996.

b. Combined data for men and women are not available before 1996.

CONTACT: Kevin Kulzer (410) 965-5366 or di.asr@ssa.gov.

Disabled Workers

Table 20.
Number, average primary insurance amount, and average monthly benefit, by age and sex,
December 2006

Age	Total			Men			Women		
	Number	Average PIA (dollars)	Average monthly benefit (dollars)	Number	Average PIA (dollars)	Average monthly benefit (dollars)	Number	Average PIA (dollars)	Average monthly benefit (dollars)
All disabled workers	6,806,918	979.20	977.70	3,643,121	1,100.20	1,097.40	3,163,797	839.90	839.80
Under 25	51,087	504.70	523.20	30,025	515.00	532.60	21,062	490.00	509.70
25-29	152,645	627.20	639.70	84,002	640.20	653.30	68,643	611.20	623.10
30-34	222,689	715.30	724.80	115,225	735.60	745.80	107,464	693.60	702.30
35-39	371,383	787.80	795.80	193,448	816.50	824.90	177,935	756.60	764.20
40-44	612,792	849.00	852.20	322,473	893.70	897.10	290,319	799.20	802.40
45-49	907,840	916.90	916.10	481,243	989.30	987.60	426,597	835.20	835.30
50-54	1,176,131	990.50	986.50	619,124	1,099.70	1,094.20	557,007	869.10	866.70
55-59	1,516,025	1,062.30	1,057.30	814,662	1,213.00	1,206.10	701,363	887.20	884.40
60-64	1,603,734	1,094.10	1,090.10	875,885	1,284.80	1,278.90	727,849	864.60	862.90
65-FRA	192,592	1,086.90	1,082.80	107,034	1,285.50	1,279.00	85,558	838.40	837.20

SOURCE: Social Security Administration, Disabled Beneficiaries and Dependents Master Beneficiary Record file, 100 percent data.

NOTES: The average monthly benefit includes secondary benefit amounts for some beneficiaries who are dually entitled. This results in the average monthly benefit being larger than the average PIA for some age groups.

PIA = primary insurance amount; FRA = full retirement age.

CONTACT: Kevin Kulzer (410) 965-5366 or di.asr@ssa.gov.

Table 21.
Distribution, by diagnostic group, December 1996–2006

Year	Total	Congenital anomalies	Endocrine, nutritional, and metabolic diseases	Infectious and parasitic diseases ^a	Injuries	Mental disorders			Neoplasms
						Total	Retardation	Other	
Number									
1996	4,399,932	9,023	197,272	87,066	213,772	1,356,310	228,131	1,128,179	124,018
1997	4,508,406	8,813	215,186	90,175	217,882	1,381,178	235,130	1,146,048	122,775
1998	4,698,560	8,719	233,724	93,776	224,388	1,459,118	243,745	1,215,373	127,174
1999	4,879,454	8,546	251,998	96,132	228,800	1,532,155	249,871	1,282,284	131,492
2000	5,042,333	8,540	244,456	97,919	231,066	1,618,758	257,601	1,361,157	136,404
2001	5,268,039	8,752	239,614	100,442	240,948	1,731,886	273,849	1,458,037	142,795
2002	5,539,597	9,226	237,020	102,589	248,544	1,845,138	286,210	1,558,928	150,138
2003	5,868,541	9,750	242,517	106,767	260,572	1,961,090	298,500	1,662,590	160,986
2004	6,197,385	10,392	247,559	110,178	271,626	2,075,867	310,240	1,765,627	172,844
2005	6,519,001	11,001	252,933	111,927	281,828	2,183,182	320,564	1,862,618	185,049
2006	6,806,918	11,544	258,310	113,410	292,161	2,276,814	329,540	1,947,274	196,075
Percent									
1996	100.0	0.2	4.5	2.0	4.9	30.8	5.2	25.6	2.8
1997	100.0	0.2	4.8	2.0	4.8	30.6	5.2	25.4	2.7
1998	100.0	0.2	5.0	2.0	4.8	31.1	5.2	25.9	2.7
1999	100.0	0.2	5.2	2.0	4.7	31.4	5.1	26.3	2.7
2000	100.0	0.2	4.8	1.9	4.6	32.1	5.1	27.0	2.7
2001	100.0	0.2	4.5	1.9	4.6	32.9	5.2	27.7	2.7
2002	100.0	0.2	4.3	1.9	4.5	33.3	5.2	28.1	2.7
2003	100.0	0.2	4.1	1.8	4.4	33.4	5.1	28.3	2.7
2004	100.0	0.2	4.0	1.8	4.4	33.5	5.0	28.5	2.8
2005	100.0	0.2	3.9	1.7	4.3	33.5	4.9	28.6	2.8
2006	100.0	0.2	3.8	1.7	4.3	33.4	4.8	28.6	2.9

(Continued)

Disabled Workers

Table 21.
Distribution, by diagnostic group, December 1996–2006—Continued

Year	Diseases of the—								Other	Unknown ^b
	Blood and blood-forming organs	Circulatory system	Digestive system	Genitourinary system	Musculoskeletal system and connective tissue	Nervous system and sense organs	Respiratory system	Skin and subcutaneous tissue		
Number										
1996	10,539	517,503	54,585	65,425	906,882	404,618	152,217	10,818	85,115	204,769
1997	10,926	522,047	57,383	69,300	962,915	420,755	155,028	11,267	95,708	167,068
1998	11,349	526,573	61,541	74,888	1,024,053	441,016	159,869	11,826	110,377	130,169
1999	11,687	528,627	65,887	79,524	1,086,432	460,133	162,863	12,151	117,326	105,701
2000	12,070	532,998	69,735	84,687	1,152,231	479,246	166,054	12,351	113,167	82,651
2001	12,847	543,516	74,680	88,949	1,231,184	505,162	170,383	12,787	113,558	50,536
2002	13,708	558,736	80,396	93,645	1,324,762	533,774	176,941	13,429	9,447	142,104
2003	14,711	579,778	87,721	98,491	1,430,357	565,244	185,834	14,133	10,705	139,885
2004	15,596	600,144	94,566	103,427	1,540,566	596,369	194,592	14,963	12,038	136,658
2005	16,270	620,852	100,934	108,701	1,656,997	623,948	202,821	15,662	13,225	133,671
2006	17,080	635,807	106,714	114,079	1,765,058	649,336	208,991	16,343	14,384	130,812
Percent										
1996	0.2	11.8	1.2	1.5	20.6	9.2	3.5	0.2	1.9	4.7
1997	0.2	11.6	1.3	1.5	21.4	9.3	3.4	0.2	2.1	3.7
1998	0.2	11.2	1.3	1.6	21.8	9.4	3.4	0.3	2.3	2.8
1999	0.2	10.8	1.4	1.6	22.3	9.4	3.3	0.2	2.4	2.2
2000	0.2	10.6	1.4	1.7	22.9	9.5	3.3	0.2	2.2	1.6
2001	0.2	10.3	1.4	1.7	23.4	9.6	3.2	0.2	2.2	1.0
2002	0.2	10.1	1.5	1.7	23.9	9.6	3.2	0.2	0.2	2.6
2003	0.3	9.9	1.5	1.7	24.4	9.6	3.2	0.2	0.2	2.4
2004	0.3	9.7	1.5	1.7	24.9	9.6	3.1	0.2	0.2	2.2
2005	0.2	9.5	1.5	1.7	25.4	9.6	3.1	0.2	0.2	2.1
2006	0.3	9.3	1.6	1.7	25.9	9.5	3.1	0.2	0.2	1.9

SOURCES: Social Security Administration, Social Security Disability Insurance Beneficiaries, 100 percent data, from 1996 to 2000; beginning with 2001, Disabled Beneficiaries and Dependents Master Beneficiary Record file, 100 percent data.

a. AIDS and HIV records are counted in "Infectious and parasitic diseases." Before 1990, they were included in "Other."

b. Beginning with 2002 data, several ill-defined impairment codes were reclassified and added to "Unknown."

CONTACT: Kevin Kulzer (410) 965-5366 or di.asr@ssa.gov.

Table 22.
Distribution of workers under age 50, by diagnostic group, December 1996–2006

Year	Total	Congenital anomalies	Endocrine, nutritional, and metabolic diseases	Infectious and parasitic diseases ^a	Injuries	Mental disorders			Neoplasms
						Total	Retardation	Other	
Number									
1996	1,917,424	4,782	76,546	63,819	110,910	865,928	164,041	701,887	41,232
1997	1,908,103	4,570	80,950	65,212	110,461	852,279	167,052	685,227	39,783
1998	1,949,052	4,503	85,500	66,208	111,266	874,231	170,694	703,537	40,638
1999	1,986,422	4,494	89,365	66,245	111,502	891,469	172,232	719,237	41,799
2000	2,012,615	4,619	80,869	65,695	110,125	912,048	174,759	737,289	42,656
2001	2,066,094	4,883	74,292	65,047	112,969	961,757	183,934	777,823	44,537
2002	2,132,996	5,290	69,229	64,075	113,785	1,005,189	190,646	814,543	45,994
2003	2,204,785	5,696	68,422	64,376	115,634	1,043,928	196,420	847,508	48,126
2004	2,259,463	6,157	66,669	63,593	116,155	1,077,329	201,594	875,735	49,957
2005	2,299,449	6,488	64,972	61,362	115,958	1,103,111	204,911	898,200	51,549
2006	2,318,436	6,807	63,507	58,890	115,158	1,117,060	207,080	909,980	52,699
Percent									
1996	100.0	0.2	4.0	3.3	5.8	45.2	8.6	36.6	2.2
1997	100.0	0.2	4.2	3.4	5.8	44.7	8.8	35.9	2.1
1998	100.0	0.2	4.4	3.4	5.7	44.9	8.8	36.1	2.1
1999	100.0	0.2	4.5	3.3	5.6	44.9	8.7	36.2	2.1
2000	100.0	0.2	4.0	3.3	5.5	45.3	8.7	36.6	2.1
2001	100.0	0.2	3.6	3.1	5.5	46.5	8.9	37.6	2.2
2002	100.0	0.2	3.2	3.0	5.3	47.1	8.9	38.2	2.2
2003	100.0	0.3	3.1	2.9	5.2	47.3	8.9	38.4	2.2
2004	100.0	0.3	3.0	2.8	5.1	47.7	8.9	38.8	2.2
2005	100.0	0.3	2.8	2.7	5.0	48.0	8.9	39.1	2.2
2006	100.0	0.3	2.7	2.5	5.0	48.1	8.9	39.2	2.3

(Continued)

Disabled Workers

Table 22.
Distribution of workers under age 50, by diagnostic group, December 1996–2006—Continued

Year	Diseases of the—								Other	Unknown ^b
	Blood and blood-forming organs	Circulatory system	Digestive system	Genitourinary system	Musculoskeletal system and connective tissue	Nervous system and sense organs	Respiratory system	Skin and subcutaneous tissue		
Number										
1996	6,711	86,607	24,535	36,214	265,043	202,169	24,862	4,926	37,745	65,395
1997	6,809	85,953	25,428	37,896	271,682	204,222	24,750	5,140	43,124	49,844
1998	6,991	84,674	27,219	39,949	284,291	208,607	25,822	5,314	50,140	33,699
1999	7,103	83,736	29,109	41,571	297,185	211,731	26,226	5,467	51,848	27,572
2000	7,245	84,362	30,357	43,333	309,327	215,744	26,718	5,785	53,437	20,595
2001	7,646	85,819	31,789	44,628	322,713	221,321	27,472	5,613	44,428	11,180
2002	8,072	87,860	33,120	45,957	340,244	228,658	28,441	5,843	4,060	47,179
2003	8,513	90,085	34,722	47,143	355,306	235,860	29,996	5,966	4,496	46,516
2004	8,855	91,227	35,859	48,231	367,251	242,252	30,883	6,231	4,951	43,863
2005	8,999	92,683	36,121	49,339	378,930	246,069	31,531	6,349	5,276	40,712
2006	9,264	92,508	36,255	50,597	386,593	248,139	31,659	6,361	5,544	37,395
Percent										
1996	0.4	4.5	1.3	1.9	13.8	10.5	1.3	0.3	2.0	3.4
1997	0.4	4.5	1.3	2.0	14.2	10.7	1.3	0.3	2.3	2.6
1998	0.4	4.3	1.4	2.0	14.6	10.7	1.3	0.3	2.6	1.7
1999	0.4	4.2	1.5	2.1	15.0	10.7	1.3	0.3	2.6	1.4
2000	0.4	4.2	1.5	2.2	15.4	10.7	1.3	0.3	2.7	1.0
2001	0.4	4.2	1.5	2.2	15.6	10.7	1.3	0.3	2.2	0.5
2002	0.4	4.1	1.6	2.2	16.0	10.7	1.3	0.3	0.2	2.2
2003	0.4	4.1	1.6	2.1	16.1	10.7	1.4	0.3	0.2	2.1
2004	0.4	4.0	1.6	2.1	16.3	10.7	1.4	0.3	0.2	1.9
2005	0.4	4.0	1.6	2.1	16.5	10.7	1.4	0.3	0.2	1.8
2006	0.4	4.0	1.6	2.2	16.7	10.7	1.4	0.3	0.2	1.6

SOURCES: Social Security Administration, Social Security Disability Insurance Beneficiaries, 100 percent data, from 1996 to 2000; beginning with 2001, Disabled Beneficiaries and Dependents Master Beneficiary Record file, 100 percent data.

a. AIDS and HIV records are counted in "Infectious and parasitic diseases." Before 1990, they were included in "Other."

b. Beginning with 2002 data, several ill-defined impairment codes were reclassified and added to "Unknown."

CONTACT: Kevin Kulzer (410) 965-5366 or di.asr@ssa.gov.

Table 23.
Distribution of workers aged 50 or older, by diagnostic group, December 1996–2006

Year	Total	Congenital anomalies	Endocrine, nutritional, and metabolic diseases	Infectious and parasitic diseases ^a	Injuries	Mental disorders			Neoplasms
						Total	Retardation	Other	
Number									
1996	2,482,508	4,241	120,726	23,247	102,862	490,382	64,090	426,292	82,786
1997	2,600,303	4,243	134,236	24,963	107,421	528,899	68,078	460,821	82,992
1998	2,749,508	4,216	148,224	27,568	113,122	584,887	73,051	511,836	86,536
1999	2,893,032	4,052	162,633	29,887	117,298	640,686	77,639	563,047	89,693
2000	3,029,718	3,921	163,587	32,224	120,941	697,278	82,842	614,436	93,748
2001	3,201,945	3,869	165,322	35,395	127,979	770,129	89,915	680,214	98,258
2002	3,406,601	3,936	167,791	38,514	134,759	839,949	95,564	744,385	104,144
2003	3,663,756	4,054	174,095	42,391	144,938	917,162	102,080	815,082	112,860
2004	3,937,922	4,235	180,890	46,585	155,471	998,538	108,646	889,892	122,887
2005	4,219,552	4,513	187,961	50,565	165,870	1,080,071	115,653	964,418	133,500
2006	4,488,482	4,737	194,803	54,520	177,003	1,159,754	122,460	1,037,294	143,376
Percent									
1996	100.0	0.2	4.9	0.9	4.1	19.8	2.6	17.2	3.3
1997	100.0	0.2	5.2	1.0	4.1	20.3	2.6	17.7	3.2
1998	100.0	0.2	5.4	1.0	4.1	21.3	2.7	18.6	3.1
1999	100.0	0.1	5.6	1.0	4.1	22.2	2.7	19.5	3.1
2000	100.0	0.1	5.4	1.1	4.0	23.0	2.7	20.3	3.1
2001	100.0	0.1	5.2	1.1	4.0	24.0	2.8	21.2	3.1
2002	100.0	0.1	4.9	1.1	4.0	24.7	2.8	21.9	3.1
2003	100.0	0.1	4.8	1.2	4.0	25.0	2.8	22.2	3.1
2004	100.0	0.1	4.6	1.2	3.9	25.4	2.8	22.6	3.1
2005	100.0	0.1	4.5	1.2	3.9	25.6	2.7	22.9	3.2
2006	100.0	0.1	4.3	1.2	3.9	25.8	2.7	23.1	3.2

(Continued)

Disabled Workers

Table 23.
Distribution of workers aged 50 or older, by diagnostic group, December 1996–2006—Continued

Year	Diseases of the—								Other	Unknown ^b
	Blood and blood-forming organs	Circulatory system	Digestive system	Genitourinary system	Musculoskeletal system and connective tissue	Nervous system and sense organs	Respiratory system	Skin and subcutaneous tissue		
Number										
1996	3,828	430,896	30,050	29,211	641,839	202,449	127,355	5,892	47,370	139,374
1997	4,117	436,094	31,955	31,404	691,233	216,533	130,278	6,127	52,584	117,224
1998	4,358	441,899	34,322	34,939	739,762	232,409	134,047	6,512	60,237	96,470
1999	4,584	444,891	36,778	37,953	789,247	248,402	136,637	6,684	65,478	78,129
2000	4,825	448,636	39,378	41,354	842,904	263,502	139,336	6,866	69,162	62,056
2001	5,201	457,697	42,891	44,321	908,471	283,841	142,911	7,174	69,130	39,356
2002	5,636	470,876	47,276	47,688	984,518	305,116	148,500	7,586	5,387	94,925
2003	6,198	489,693	52,999	51,348	1,075,051	329,384	155,838	8,167	6,209	93,369
2004	6,741	508,917	58,707	55,196	1,173,315	354,117	163,709	8,732	7,087	92,795
2005	7,271	528,169	64,813	59,362	1,278,067	377,879	171,290	9,313	7,949	92,959
2006	7,816	543,299	70,459	63,482	1,378,465	401,197	177,332	9,982	8,840	93,417
Percent										
1996	0.2	17.4	1.2	1.2	25.9	8.2	5.1	0.2	1.9	5.6
1997	0.2	16.8	1.2	1.2	26.6	8.3	5.0	0.2	2.0	4.5
1998	0.2	16.1	1.2	1.3	26.9	8.5	4.9	0.2	2.2	3.5
1999	0.2	15.4	1.3	1.3	27.3	8.6	4.7	0.2	2.3	2.7
2000	0.2	14.8	1.3	1.4	27.8	8.7	4.6	0.2	2.3	2.0
2001	0.2	14.3	1.3	1.4	28.4	8.9	4.5	0.2	2.2	1.2
2002	0.2	13.8	1.4	1.4	28.9	9.0	4.4	0.2	0.2	2.8
2003	0.2	13.4	1.4	1.4	29.3	9.0	4.3	0.2	0.2	2.5
2004	0.2	12.9	1.5	1.4	29.8	9.0	4.2	0.2	0.2	2.4
2005	0.2	12.5	1.5	1.4	30.3	9.0	4.1	0.2	0.2	2.2
2006	0.2	12.1	1.6	1.4	30.7	8.9	4.0	0.2	0.2	2.1

SOURCES: Social Security Administration, Social Security Disability Insurance Beneficiaries, 100 percent data, from 1996 to 2000; beginning with 2001, Disabled Beneficiaries and Dependents Master Beneficiary Record file, 100 percent data.

a. AIDS and HIV records are counted in "Infectious and parasitic diseases." Before 1990, they were included in "Other."

b. Beginning with 2002, several ill-defined impairment codes were reclassified and added to "Unknown."

CONTACT: Kevin Kulzer (410) 965-5366 or di.asr@ssa.gov.

Table 24.
Distribution, by diagnostic group and age, December 2006

Diagnostic group	Total	Under 30	30–39	40–49	50–59	60–FRA
	<i>Number</i>					
Total	6,806,918	203,732	594,072	1,520,632	2,692,156	1,796,326
Congenital anomalies	11,544	1,651	2,406	2,750	2,987	1,750
Endocrine, nutritional, and metabolic diseases	258,310	2,967	13,831	46,709	113,766	81,037
Infectious and parasitic diseases	113,410	1,603	13,659	43,628	40,244	14,276
Injuries	292,161	11,151	30,789	73,218	108,760	68,243
Mental disorders						
Retardation	329,540	38,198	69,048	99,834	90,481	31,979
Other	1,947,274	95,734	256,044	558,202	728,483	308,811
Neoplasms	196,075	4,537	12,019	36,143	81,405	61,971
Diseases of the—						
Blood and blood-forming organs	17,080	2,056	3,034	4,174	5,033	2,783
Circulatory system	635,807	3,378	16,585	72,545	264,523	278,776
Digestive system	106,714	2,044	7,721	26,490	48,195	22,264
Genitourinary system	114,079	4,604	15,676	30,317	42,188	21,294
Musculoskeletal system and connective tissue	1,765,058	8,547	68,281	309,765	763,517	614,948
Nervous system and sense organs	649,336	22,856	68,126	157,157	249,145	152,052
Respiratory system	208,991	1,267	5,577	24,815	84,694	92,638
Skin and subcutaneous tissue	16,343	475	1,649	4,237	6,447	3,535
Other	14,384	531	1,377	3,636	5,616	3,224
Unknown	130,812	2,133	8,250	27,012	56,672	36,745
	<i>Percent</i>					
Total	100.0	100.0	100.0	100.0	100.0	100.0
Congenital anomalies	0.2	0.8	0.4	0.2	0.1	0.1
Endocrine, nutritional, and metabolic diseases	3.8	1.5	2.3	3.1	4.2	4.5
Infectious and parasitic diseases	1.7	0.8	2.3	2.9	1.5	0.8
Injuries	4.3	5.5	5.2	4.8	4.0	3.8
Mental disorders						
Retardation	4.8	18.7	11.6	6.6	3.4	1.8
Other	28.6	47.0	43.1	36.7	27.1	17.2
Neoplasms	2.9	2.2	2.0	2.4	3.0	3.4
Diseases of the—						
Blood and blood-forming organs	0.3	1.0	0.5	0.3	0.2	0.2
Circulatory system	9.3	1.7	2.8	4.8	9.8	15.5
Digestive system	1.6	1.0	1.3	1.7	1.8	1.2
Genitourinary system	1.7	2.3	2.6	2.0	1.6	1.2
Musculoskeletal system and connective tissue	25.9	4.2	11.5	20.4	28.4	34.2
Nervous system and sense organs	9.5	11.2	11.5	10.3	9.3	8.5
Respiratory system	3.1	0.6	0.9	1.6	3.1	5.2
Skin and subcutaneous tissue	0.2	0.2	0.3	0.3	0.2	0.2
Other	0.2	0.3	0.2	0.2	0.2	0.2
Unknown	1.9	1.0	1.4	1.8	2.1	2.0

SOURCE: Social Security Administration, Disabled Beneficiaries and Dependents Master Beneficiary Record file, 100 percent data.

NOTE: FRA = full retirement age.

CONTACT: Kevin Kulzer (410) 965-5366 or di.asr@ssa.gov.

Disabled Workers

Table 25.
Distribution of workers with a secondary benefit (dual entitlement), by worker's smaller primary insurance amount and sex, December 2006

Primary insurance amount (dollars)	Total		Men		Women	
	Number	Percent	Number	Percent	Number	Percent
All disabled workers	234,466	100.0	54,017	100.0	180,449	100.0
Less than 300.00	30,211	12.9	10,665	19.7	19,546	10.8
300.00–399.90	29,652	12.6	10,519	19.5	19,133	10.6
400.00–499.90	25,220	10.8	7,780	14.4	17,440	9.7
500.00–599.90	40,016	17.1	10,877	20.1	29,139	16.1
600.00–699.90	39,069	16.7	7,064	13.1	32,005	17.7
700.00–799.90	26,464	11.3	3,103	5.7	23,361	12.9
800.00–899.90	16,915	7.2	1,463	2.7	15,452	8.6
900.00–999.90	10,711	4.6	923	1.7	9,788	5.4
1,000.00–1,099.90	6,633	2.8	510	0.9	6,123	3.4
1,100.00 or more	9,575	4.1	1,113	2.1	8,462	4.7
Average amount (dollars)	595.40		493.80		625.80	

SOURCE: Social Security Administration, Disabled Beneficiaries and Dependents Master Beneficiary Record file, 100 percent data.

CONTACT: Kevin Kulzer (410) 965-5366 or di.asr@ssa.gov.

Table 26.
Distribution of workers with a secondary benefit (dual entitlement), by type of secondary benefit and sex, December 2006

Type of secondary benefit	Total		Men		Women	
	Number	Percent	Number	Percent	Number	Percent
All disabled workers	234,466	100.0	54,017	100.0	180,449	100.0
Spouses	29,840	12.7	200	0.4	29,640	16.4
Widow(er)s	35,268	15.0	1,081	2.0	34,187	18.9
Disabled widow(er)s	85,974	36.7	3,159	5.8	82,815	45.9
Surviving mothers and fathers	2,070	0.9	99	0.2	1,971	1.1
Disabled adult children	81,308	34.7	49,478	91.6	31,830	17.6
Parents	6	a	0	0	6	a

SOURCE: Social Security Administration, Disabled Beneficiaries and Dependents Master Beneficiary Record file, 100 percent data.

a. Less than 0.05 percent.

CONTACT: Kevin Kulzer (410) 965-5366 or di.asr@ssa.gov.

Disabled Workers

Table 27.
Number, by sex, state or other area, and age, December 2006

State or area	Total	Under 35	35-39	40-44	45-49	50-54	55-59	60-FRA
<i>All disabled workers</i>								
All areas	6,806,918	426,421	371,383	612,792	907,840	1,176,131	1,516,025	1,796,326
Alabama	178,303	9,578	9,678	16,002	23,920	32,130	41,093	45,902
Alaska	10,253	851	622	958	1,423	1,819	2,183	2,397
Arizona	125,654	8,276	7,013	11,118	16,697	21,616	27,950	32,984
Arkansas	109,104	6,319	5,617	9,445	14,226	18,821	24,722	29,954
California	570,177	33,774	30,234	50,287	75,968	99,997	128,724	151,193
Colorado	75,874	4,839	4,097	6,678	10,721	13,897	16,983	18,659
Connecticut	67,295	4,617	4,119	7,062	9,582	11,190	13,552	17,173
Delaware	21,702	1,286	1,198	2,107	3,053	3,880	4,767	5,411
District of Columbia	10,263	735	614	1,117	1,527	2,022	2,135	2,113
Florida	407,193	21,279	19,686	35,529	54,092	69,420	91,185	116,002
Georgia	203,994	10,821	10,191	17,798	26,617	35,587	47,118	55,862
Hawaii	19,211	1,120	1,010	1,668	2,555	3,365	4,386	5,107
Idaho	31,357	2,563	1,831	2,631	4,002	5,179	6,701	8,450
Illinois	231,653	17,246	13,395	21,197	31,451	39,630	49,380	59,354
Indiana	148,744	11,006	8,786	13,835	20,125	25,572	32,088	37,332
Iowa	61,805	5,147	3,680	5,618	8,360	10,504	12,937	15,559
Kansas	55,525	4,111	2,954	5,076	7,910	9,788	11,911	13,775
Kentucky	167,339	10,144	9,520	15,361	22,720	29,274	37,897	42,423
Louisiana	114,683	6,881	5,891	10,160	15,547	20,602	25,957	29,645
Maine	48,000	3,855	3,205	5,061	6,882	7,896	9,911	11,190
Maryland	94,535	6,397	5,348	9,340	13,203	16,510	20,340	23,397
Massachusetts	158,861	13,249	10,969	17,608	23,312	26,891	30,527	36,305
Michigan	250,412	17,349	14,017	21,172	32,676	44,866	56,455	63,877
Minnesota	94,887	9,365	5,851	9,088	13,211	15,560	19,171	22,641
Mississippi	109,552	6,109	6,024	9,695	14,697	19,786	24,830	28,411
Missouri	168,295	10,953	9,280	15,679	23,662	29,372	35,845	43,504
Montana	21,604	1,341	1,008	1,728	2,872	3,690	4,938	6,027
Nebraska	33,921	2,641	1,954	3,187	4,588	5,646	7,176	8,729
Nevada	46,951	2,608	2,375	3,927	5,761	7,794	10,648	13,838
New Hampshire	35,568	3,220	2,551	3,933	5,276	5,801	6,873	7,914
New Jersey	158,607	8,719	8,526	14,920	21,205	26,361	34,385	44,491
New Mexico	48,089	3,451	2,594	4,190	6,262	8,260	11,214	12,118
New York	416,955	22,645	22,444	39,757	55,985	70,074	92,998	113,052
North Carolina	260,960	13,489	13,351	22,450	33,735	44,253	60,914	72,768
North Dakota	11,697	975	601	1,004	1,596	1,952	2,474	3,095
Ohio	251,744	20,260	15,108	22,788	33,553	42,897	54,335	62,803
Oklahoma	97,024	6,031	5,004	8,048	12,631	16,586	22,094	26,630
Oregon	78,853	4,549	4,020	6,272	9,434	13,605	18,804	22,169
Pennsylvania	309,581	21,524	18,141	29,080	41,456	53,157	67,137	79,086
Rhode Island	29,738	2,026	1,812	2,872	4,062	5,181	6,317	7,468
South Carolina	135,816	6,356	6,710	11,264	17,361	23,685	32,069	38,371
South Dakota	15,044	1,244	782	1,297	1,986	2,540	3,261	3,934
Tennessee	190,613	10,085	10,601	17,455	25,297	33,249	43,090	50,836
Texas	410,805	26,344	21,834	36,359	54,703	71,879	91,744	107,942
Utah	32,280	3,217	2,018	2,914	4,363	5,310	6,522	7,936

(Continued)

Table 27.
Number, by sex, state or other area, and age, December 2006—Continued

State or area	Total	Under 35	35-39	40-44	45-49	50-54	55-59	60-FRA
<i>All disabled workers (cont.)</i>								
Vermont	16,673	1,418	1,140	1,720	2,312	2,867	3,374	3,842
Virginia	173,567	10,538	9,620	15,925	23,231	30,162	38,979	45,112
Washington	130,099	8,735	7,390	11,208	16,875	22,092	29,589	34,210
West Virginia	83,129	4,001	4,125	6,529	10,120	14,704	20,924	22,726
Wisconsin	116,154	9,549	6,893	10,936	15,489	19,751	24,649	28,887
Wyoming	9,937	749	519	854	1,305	1,713	2,202	2,595
Outlying areas								
American Samoa	1,114	3	24	51	112	205	346	373
Guam	1,248	80	87	110	180	206	305	280
Northern Mariana								
Islands	198	18	19	29	30	33	37	32
Puerto Rico	139,922	2,481	4,865	9,871	16,533	25,153	36,418	44,601
U.S. Virgin Islands	1,638	62	71	128	168	253	371	585
Foreign countries	12,718	192	366	696	1,220	1,898	3,090	5,256
<i>Men</i>								
All areas	3,643,121	229,252	193,448	322,473	481,243	619,124	814,662	982,919
Alabama	93,279	5,069	4,899	8,215	12,407	16,467	21,439	24,783
Alaska	5,713	510	357	506	747	972	1,238	1,383
Arizona	65,642	4,337	3,554	5,647	8,426	10,929	14,936	17,813
Arkansas	59,126	3,380	2,943	5,001	7,591	10,040	13,592	16,579
California	305,703	18,910	16,361	27,570	40,926	52,685	68,009	81,242
Colorado	39,836	2,688	2,087	3,440	5,561	7,120	9,001	9,939
Connecticut	35,016	2,457	2,054	3,567	4,873	5,728	7,103	9,234
Delaware	10,699	664	558	995	1,512	1,883	2,299	2,788
District of Columbia	5,457	392	347	619	850	1,113	1,086	1,050
Florida	217,131	11,684	10,210	18,836	28,702	36,448	48,363	62,888
Georgia	105,593	5,828	5,379	9,359	13,889	17,902	24,268	28,968
Hawaii	11,280	643	592	981	1,534	1,945	2,599	2,986
Idaho	17,312	1,376	970	1,416	2,121	2,780	3,722	4,927
Illinois	122,733	9,116	6,858	11,096	16,535	20,562	26,368	32,198
Indiana	77,640	5,790	4,450	7,145	10,360	13,232	16,701	19,962
Iowa	32,848	2,847	1,919	2,978	4,342	5,534	6,852	8,376
Kansas	28,503	2,169	1,506	2,520	3,965	4,888	6,171	7,284
Kentucky	96,394	5,550	5,251	8,597	12,889	16,974	22,060	25,073
Louisiana	70,743	3,952	3,477	6,204	9,538	12,676	16,188	18,708
Maine	26,790	2,091	1,719	2,726	3,740	4,350	5,744	6,420
Maryland	48,505	3,440	2,693	4,756	6,801	8,272	10,328	12,215
Massachusetts	82,001	6,558	5,325	8,942	12,085	13,948	15,956	19,187
Michigan	132,506	9,153	7,216	11,113	17,293	23,490	29,668	34,573
Minnesota	50,303	4,895	2,935	4,599	6,729	8,065	10,532	12,548
Mississippi	58,329	3,340	3,072	5,026	7,729	10,452	13,376	15,334
Missouri	88,614	5,824	4,787	8,144	12,410	15,303	18,837	23,309
Montana	12,298	767	517	958	1,554	1,998	2,926	3,578
Nebraska	17,373	1,404	948	1,514	2,257	2,836	3,721	4,693
Nevada	24,524	1,358	1,159	2,017	2,913	3,883	5,670	7,524
New Hampshire	17,572	1,520	1,176	1,836	2,544	2,823	3,551	4,122

(Continued)

Disabled Workers

Table 27.
Number, by sex, state or other area, and age, December 2006—Continued

State or area	Total	Under 35	35–39	40–44	45–49	50–54	55–59	60–FRA
<i>Men (cont.)</i>								
New Jersey	80,941	4,510	4,124	7,367	10,742	13,203	17,697	23,298
New Mexico	27,815	1,980	1,484	2,358	3,513	4,621	6,588	7,271
New York	223,022	12,221	11,817	20,861	30,252	37,150	49,898	60,823
North Carolina	131,980	7,494	6,683	11,350	16,909	21,829	30,646	37,069
North Dakota	6,558	573	303	536	846	1,046	1,440	1,814
Ohio	137,619	10,861	7,979	12,208	18,143	23,027	29,939	35,462
Oklahoma	52,135	3,299	2,711	4,377	6,679	8,669	11,828	14,572
Oregon	43,409	2,640	2,276	3,409	4,930	7,148	10,466	12,540
Pennsylvania	166,107	11,027	9,299	15,087	21,982	28,288	36,419	44,005
Rhode Island	15,320	1,051	911	1,448	2,111	2,612	3,308	3,879
South Carolina	69,437	3,439	3,399	5,574	8,808	11,810	16,432	19,975
South Dakota	8,159	673	391	657	1,060	1,353	1,847	2,178
Tennessee	99,104	5,314	5,362	8,844	12,837	16,923	22,618	27,206
Texas	224,533	14,174	11,571	19,533	29,581	38,426	50,130	61,118
Utah	17,076	1,732	1,045	1,509	2,270	2,755	3,469	4,296
Vermont	9,014	758	601	885	1,217	1,512	1,809	2,232
Virginia	90,939	5,477	4,788	8,005	12,117	15,654	20,604	24,294
Washington	69,994	4,838	4,000	5,967	9,035	11,530	15,799	18,825
West Virginia	53,754	2,292	2,532	4,014	6,373	9,502	13,827	15,214
Wisconsin	61,400	4,899	3,430	5,511	7,975	10,281	13,303	16,001
Wyoming	5,493	423	275	467	710	919	1,200	1,499
Outlying areas								
American Samoa	655	3	18	39	78	114	189	214
Guam	804	52	58	73	116	129	204	172
Northern Mariana Islands	128	9	15	22	18	20	22	22
Puerto Rico	78,315	1,649	2,800	5,515	9,155	13,786	20,235	25,175
U.S. Virgin Islands	904	42	39	68	97	128	188	342
Foreign countries	9,043	110	218	466	866	1,391	2,253	3,739
<i>Women</i>								
All areas	3,163,797	197,169	177,935	290,319	426,597	557,007	701,363	813,407
Alabama	85,024	4,509	4,779	7,787	11,513	15,663	19,654	21,119
Alaska	4,540	341	265	452	676	847	945	1,014
Arizona	60,012	3,939	3,459	5,471	8,271	10,687	13,014	15,171
Arkansas	49,978	2,939	2,674	4,444	6,635	8,781	11,130	13,375
California	264,474	14,864	13,873	22,717	35,042	47,312	60,715	69,951
Colorado	36,038	2,151	2,010	3,238	5,160	6,777	7,982	8,720
Connecticut	32,279	2,160	2,065	3,495	4,709	5,462	6,449	7,939
Delaware	11,003	622	640	1,112	1,541	1,997	2,468	2,623
District of Columbia	4,806	343	267	498	677	909	1,049	1,063
Florida	190,062	9,595	9,476	16,693	25,390	32,972	42,822	53,114
Georgia	98,401	4,993	4,812	8,439	12,728	17,685	22,850	26,894
Hawaii	7,931	477	418	687	1,021	1,420	1,787	2,121
Idaho	14,045	1,187	861	1,215	1,881	2,399	2,979	3,523
Illinois	108,920	8,130	6,537	10,101	14,916	19,068	23,012	27,156
Indiana	71,104	5,216	4,336	6,690	9,765	12,340	15,387	17,370

(Continued)

Table 27.
Number, by sex, state or other area, and age, December 2006—Continued

State or area	Total	Under 35	35-39	40-44	45-49	50-54	55-59	60-FRA
<i>Women (cont.)</i>								
Iowa	28,957	2,300	1,761	2,640	4,018	4,970	6,085	7,183
Kansas	27,022	1,942	1,448	2,556	3,945	4,900	5,740	6,491
Kentucky	70,945	4,594	4,269	6,764	9,831	12,300	15,837	17,350
Louisiana	43,940	2,929	2,414	3,956	6,009	7,926	9,769	10,937
Maine	21,210	1,764	1,486	2,335	3,142	3,546	4,167	4,770
Maryland	46,030	2,957	2,655	4,584	6,402	8,238	10,012	11,182
Massachusetts	76,860	6,691	5,644	8,666	11,227	12,943	14,571	17,118
Michigan	117,906	8,196	6,801	10,059	15,383	21,376	26,787	29,304
Minnesota	44,584	4,470	2,916	4,489	6,482	7,495	8,639	10,093
Mississippi	51,223	2,769	2,952	4,669	6,968	9,334	11,454	13,077
Missouri	79,681	5,129	4,493	7,535	11,252	14,069	17,008	20,195
Montana	9,306	574	491	770	1,318	1,692	2,012	2,449
Nebraska	16,548	1,237	1,006	1,673	2,331	2,810	3,455	4,036
Nevada	22,427	1,250	1,216	1,910	2,848	3,911	4,978	6,314
New Hampshire	17,996	1,700	1,375	2,097	2,732	2,978	3,322	3,792
New Jersey	77,666	4,209	4,402	7,553	10,463	13,158	16,688	21,193
New Mexico	20,274	1,471	1,110	1,832	2,749	3,639	4,626	4,847
New York	193,933	10,424	10,627	18,896	25,733	32,924	43,100	52,229
North Carolina	128,980	5,995	6,668	11,100	16,826	22,424	30,268	35,699
North Dakota	5,139	402	298	468	750	906	1,034	1,281
Ohio	114,125	9,399	7,129	10,580	15,410	19,870	24,396	27,341
Oklahoma	44,889	2,732	2,293	3,671	5,952	7,917	10,266	12,058
Oregon	35,444	1,909	1,744	2,863	4,504	6,457	8,338	9,629
Pennsylvania	143,474	10,497	8,842	13,993	19,474	24,869	30,718	35,081
Rhode Island	14,418	975	901	1,424	1,951	2,569	3,009	3,589
South Carolina	66,379	2,917	3,311	5,690	8,553	11,875	15,637	18,396
South Dakota	6,885	571	391	640	926	1,187	1,414	1,756
Tennessee	91,509	4,771	5,239	8,611	12,460	16,326	20,472	23,630
Texas	186,272	12,170	10,263	16,826	25,122	33,453	41,614	46,824
Utah	15,204	1,485	973	1,405	2,093	2,555	3,053	3,640
Vermont	7,659	660	539	835	1,095	1,355	1,565	1,610
Virginia	82,628	5,061	4,832	7,920	11,114	14,508	18,375	20,818
Washington	60,105	3,897	3,390	5,241	7,840	10,562	13,790	15,385
West Virginia	29,375	1,709	1,593	2,515	3,747	5,202	7,097	7,512
Wisconsin	54,754	4,650	3,463	5,425	7,514	9,470	11,346	12,886
Wyoming	4,444	326	244	387	595	794	1,002	1,096
Outlying areas								
American Samoa	459	0	6	12	34	91	157	159
Guam	444	28	29	37	64	77	101	108
Northern Mariana Islands	70	9	4	7	12	13	15	10
Puerto Rico	61,607	832	2,065	4,356	7,378	11,367	16,183	19,426
U.S. Virgin Islands	734	20	32	60	71	125	183	243
Foreign countries	3,675	82	148	230	354	507	837	1,517

SOURCE: Social Security Administration, Disabled Beneficiaries and Dependents Master Beneficiary Record file, 100 percent data.

NOTE: FRA = full retirement age.

CONTACT: Kevin Kulzer (410) 965-5366 or di.asr@ssa.gov.

Disabled-Worker Families

Table 28.
Number and average monthly family benefit, by selected family composition,
December 1960–2006, selected years

Year	Worker only			Worker, spouse, and—		Worker and aged spouse ^a
	All	Men	Women	1 child	2 or more children	
<i>Number (thousands)</i>						
1960	357	261	96	22	32	22
1965	714	481	232	54	109	30
1970	1,054	680	374	77	164	43
1975	1,750	1,080	671	137	250	66
1980	2,061	1,257	804	154	228	80
1981	--	--	--	--	--	--
1982	1,969	1,208	760	124	163	78
1983	1,961	1,215	746	85	143	80
1984	1,993	1,241	752	83	140	76
1985	2,039	1,267	772	84	140	76
1986	2,096	1,301	795	82	136	74
1987	2,154	1,338	816	79	132	74
1988	2,194	1,353	841	77	125	71
1989	2,262	1,390	872	75	120	67
1990	2,370	1,448	922	75	118	63
1991	2,523	1,529	994	76	119	61
1992	2,738	1,643	1,094	78	125	61
1993	2,935	1,743	1,192	78	127	59
1994	3,121	1,830	1,292	76	128	57
1995	3,305	1,909	1,396	75	124	55
1996	3,473	1,973	1,500	61	104	53
1997	3,593	2,006	1,588	57	91	53
1998	3,769	2,074	1,695	52	80	53
1999	3,924	2,131	1,793	49	72	52
2000	4,080	2,191	1,890	45	65	50
2001	4,260	2,289	1,970	68	92	57
2002	4,487	2,392	2,095	64	86	56
2003	4,769	2,525	2,244	57	82	60
2004	5,068	2,665	2,403	55	78	65
2005	5,357	2,797	2,561	53	74	73
2006	5,625	2,918	2,707	50	69	78

(Continued)

Table 28.
Number and average monthly family benefit, by selected family composition,
December 1960–2006, selected years—Continued

Year	Worker only			Worker, spouse, and—		Worker and aged spouse ^a
	All	Men	Women	1 child	2 or more children	
<i>Average monthly family benefit (dollars)</i>						
1960	87.90	91.90	76.90	184.70	192.20	135.50
1965	95.40	100.70	85.00	201.00	216.30	145.90
1970	128.10	136.30	113.10	264.10	273.20	199.20
1975	218.90	240.00	185.00	441.00	454.00	344.00
1980	355.40	396.20	291.70	727.00	746.10	573.00
1981	--	--	--	--	--	--
1982	424.40	474.20	344.70	847.40	858.20	690.70
1983	439.40	490.90	355.40	867.90	881.80	716.20
1984	454.00	507.60	365.70	881.50	885.50	740.40
1985	466.90	523.10	374.60	898.10	895.20	765.00
1986	470.70	527.80	377.40	896.90	888.30	773.30
1987	491.60	552.00	392.60	929.40	918.30	815.50
1988	512.20	576.10	409.50	960.20	938.40	855.40
1989	539.30	607.10	431.20	1,009.40	971.90	903.70
1990	570.40	642.80	456.80	1,062.10	1,016.00	960.80
1991	592.30	668.40	475.50	1,098.00	1,043.30	1,004.70
1992	609.50	688.70	490.70	1,122.10	1,057.40	1,045.00
1993	625.50	707.20	506.00	1,143.00	1,074.20	1,078.20
1994	646.20	731.80	525.00	1,177.60	1,100.00	1,118.60
1995	667.60	757.40	544.80	1,205.50	1,130.90	1,159.90
1996	690.60	785.30	566.00	1,245.90	1,148.50	1,200.60
1997	708.00	806.60	583.60	1,280.20	1,165.90	1,238.50
1998	720.00	820.20	597.40	1,300.40	1,189.40	1,261.90
1999	741.20	844.50	618.50	1,344.90	1,224.20	1,295.30
2000	773.60	880.70	649.40	1,394.20	1,274.30	1,355.50
2001	807.40	914.40	683.10	1,413.50	1,298.50	1,393.50
2002	827.30	935.80	703.50	1,445.10	1,331.70	1,431.50
2003	854.80	965.90	729.70	1,495.80	1,373.30	1,486.80
2004	887.30	1,001.60	760.60	1,554.20	1,426.80	1,546.10
2005	930.80	1,049.40	801.30	1,627.90	1,497.50	1,632.50
2006	968.40	1,091.30	836.00	1,700.10	1,570.00	1,706.10

SOURCES: Social Security Administration. For years before 2001, *Annual Statistical Supplement to the Social Security Bulletin*, based on the Master Beneficiary Record (from 1960 to 1984, various sampling rates; from 1985 to 2000, 10 percent sample); beginning with 2001, Disabled Beneficiaries and Dependents Master Beneficiary Record file, 100 percent data.

NOTES: A "family" means beneficiaries entitled on one worker's account.

Data include beneficiaries whose benefits are being withheld.

-- = not available.

a. Spouse's entitlement based on age.

CONTACT: Kevin Kulzer (410) 965-5366 or di.asr@ssa.gov.

Disabled-Worker Families

Table 29.
Number, average primary insurance amount, and average monthly family benefit, by family composition, December 2006

Family composition	Number of families	Number of beneficiaries	Average primary insurance amount (dollars)	Average monthly family benefit (dollars)	Percentage of families receiving maximum family benefit ^a
Worker only					
Men	2,918,199	2,918,199	1,093.50	1,091.30	10.3
Women	2,707,183	2,707,183	836.20	836.00	21.5
Worker with children					
By sex of worker					
Men	629,872	1,606,513	1,062.70	1,530.20	92.3
Women	486,072	1,224,704	858.10	1,175.70	91.2
By number of children					
1 child	689,907	1,379,814	982.30	1,380.40	90.3
2 children	300,051	900,153	972.70	1,386.30	94.1
3 or more children	125,986	551,250	927.90	1,325.80	95.1
Worker with—					
Spouse aged 62 or older ^b	78,091	156,548	1,403.80	1,706.10	7.2
Spouse aged 62 or older and 1 or more children	3,002	9,879	1,273.00	2,047.00	71.8
Spouse and 1 child	47,883	143,605	1,117.40	1,683.20	94.7
Spouse and 2 children	41,276	165,108	1,074.90	1,599.30	95.1
Spouse and 3 or more children	27,616	152,678	1,032.40	1,515.40	95.2

SOURCE: Social Security Administration, Disabled Beneficiaries and Dependents Master Beneficiary Record file, 100 percent data.

NOTES: A "family" means beneficiaries entitled on one worker's account.

Data include beneficiaries whose benefits are being withheld.

a. Includes families and worker-only beneficiaries for whom the primary insurance amount is equal to the family maximum amount.

b. If the spouse is also entitled to a retired-worker benefit, only the benefit amount received as a spouse is included.

CONTACT: Kevin Kulzer (410) 965-5366 or di.asr@ssa.gov.

Table 30.
Distribution, by family composition and age of worker, December 2006

Family composition	Total, all ages	Under 30	30-34	35-39	40-44	45-49	50-54	55-59	60-FRA
Number									
Worker only	5,625,382	168,693	139,532	207,113	380,017	673,749	1,005,115	1,396,360	1,654,803
Worker with—									
Spouse									
Aged 62 or older ^a	81,093	0	6	21	73	409	1,721	8,711	70,152
Child in care	116,775	2,503	6,666	14,642	22,157	24,265	20,155	15,328	11,059
Children									
1 child	689,907	24,296	36,417	71,551	126,966	154,012	127,170	89,997	59,498
2 children	300,051	12,674	30,043	59,841	74,238	60,306	34,034	18,632	10,283
3 or more children	125,986	6,114	19,875	33,220	30,314	19,036	9,256	5,158	3,013
Families receiving maximum benefit ^b	2,025,636	143,877	148,139	239,953	335,363	357,025	299,913	260,161	241,205
Percent									
Worker only	100.0	3.0	2.5	3.7	6.8	12.0	17.9	24.8	29.4
Worker with—									
Spouse									
Aged 62 or older ^a	100.0	0	c	c	0.1	0.5	2.1	10.7	86.5
Child in care	100.0	2.1	5.7	12.5	19.0	20.8	17.3	13.1	9.5
Children									
1 child	100.0	3.5	5.3	10.4	18.4	22.3	18.4	13.0	8.6
2 children	100.0	4.2	10.0	19.9	24.7	20.1	11.3	6.2	3.4
3 or more children	100.0	4.9	15.8	26.4	24.1	15.1	7.3	4.1	2.4
Families receiving maximum benefit ^b	29.2	67.1	63.7	62.1	52.9	38.3	25.0	17.0	13.3

SOURCE: Social Security Administration, Disabled Beneficiaries and Dependents Master Beneficiary Record file, 100 percent data.

NOTES: A "family" means beneficiaries entitled on one worker's account.

Data include beneficiaries whose benefits are being withheld.

FRA = full retirement age.

a. Includes spouses aged 62 or older with children.

b. Includes families and worker-only beneficiaries for whom the primary insurance amount is equal to the family maximum amount.

c. Less than 0.05 percent.

CONTACT: Kevin Kulzer (410) 965-5366 or di.asr@ssa.gov.