

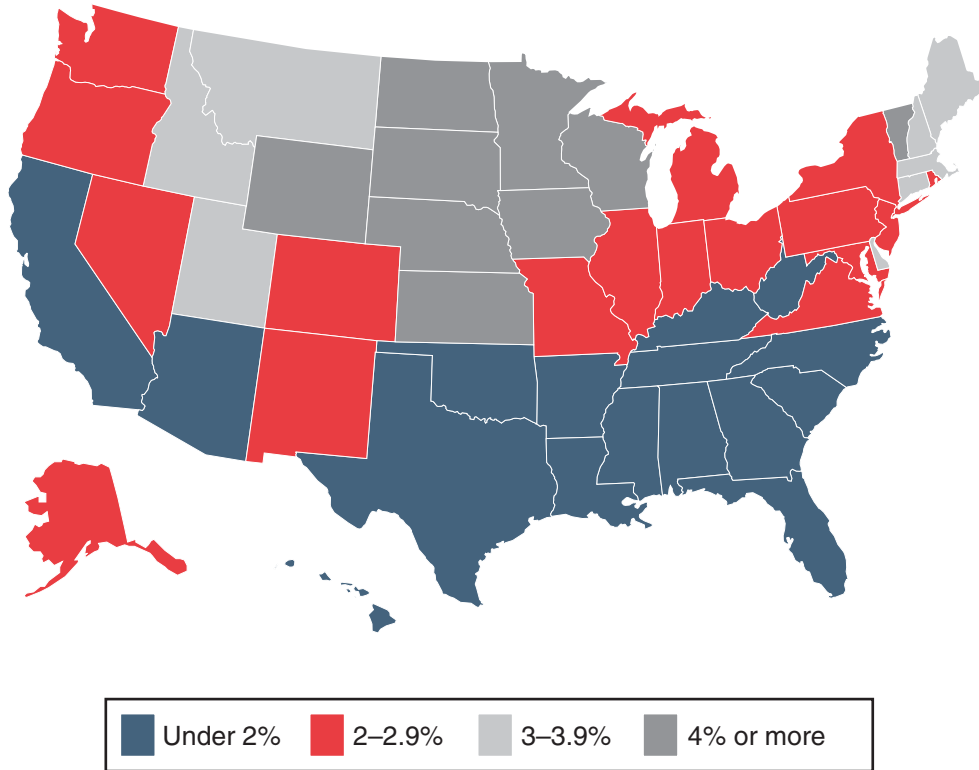
## **Section 1619 Participants**

---

---

**Chart 6.**  
**Percentage distribution, by state, December 2003**

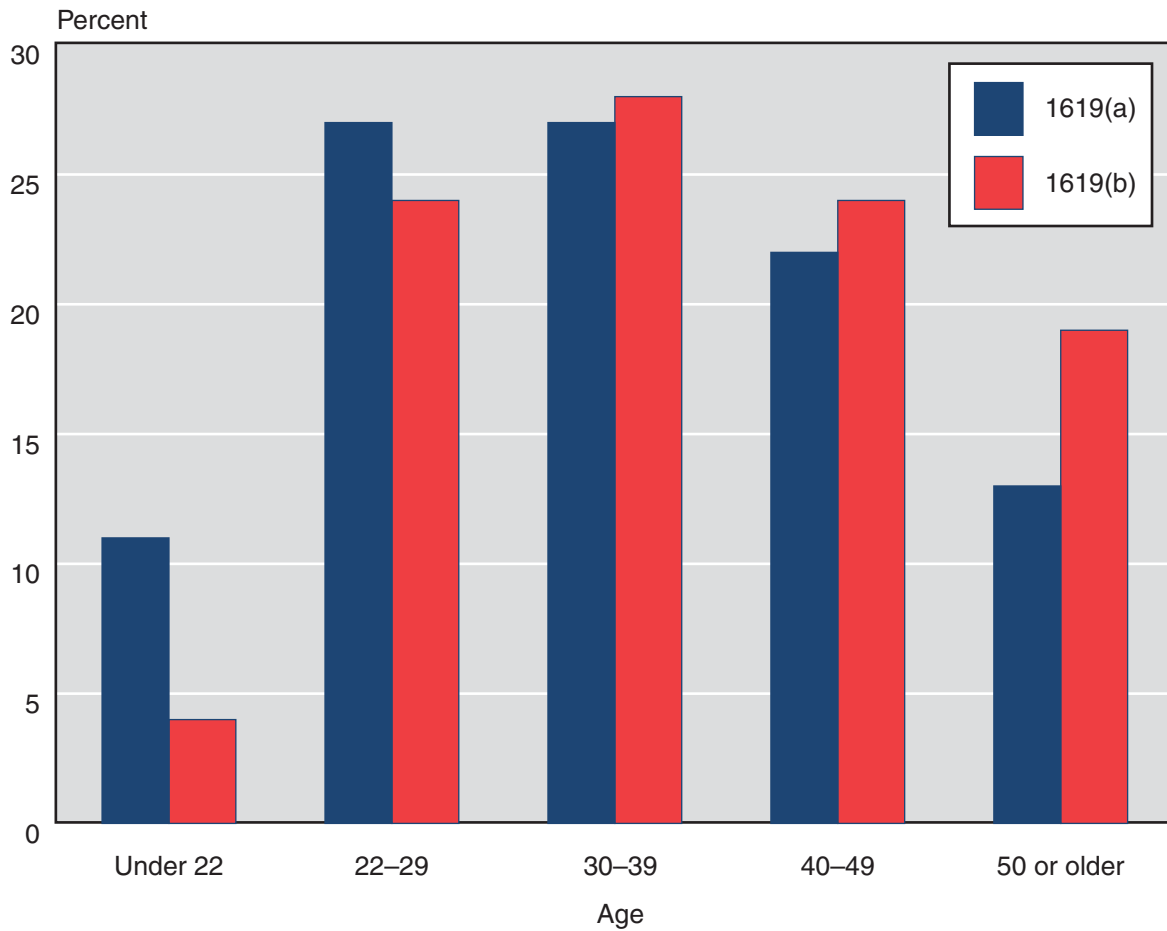
The state distribution of section 1619 cases mirrors that for all working recipients in Chart 2. Proportions of section 1619 cases were higher in the Midwest and lower in the South.



SOURCE: Table 9.

**Chart 7.**  
**Percentage distribution, by age, December 2003**

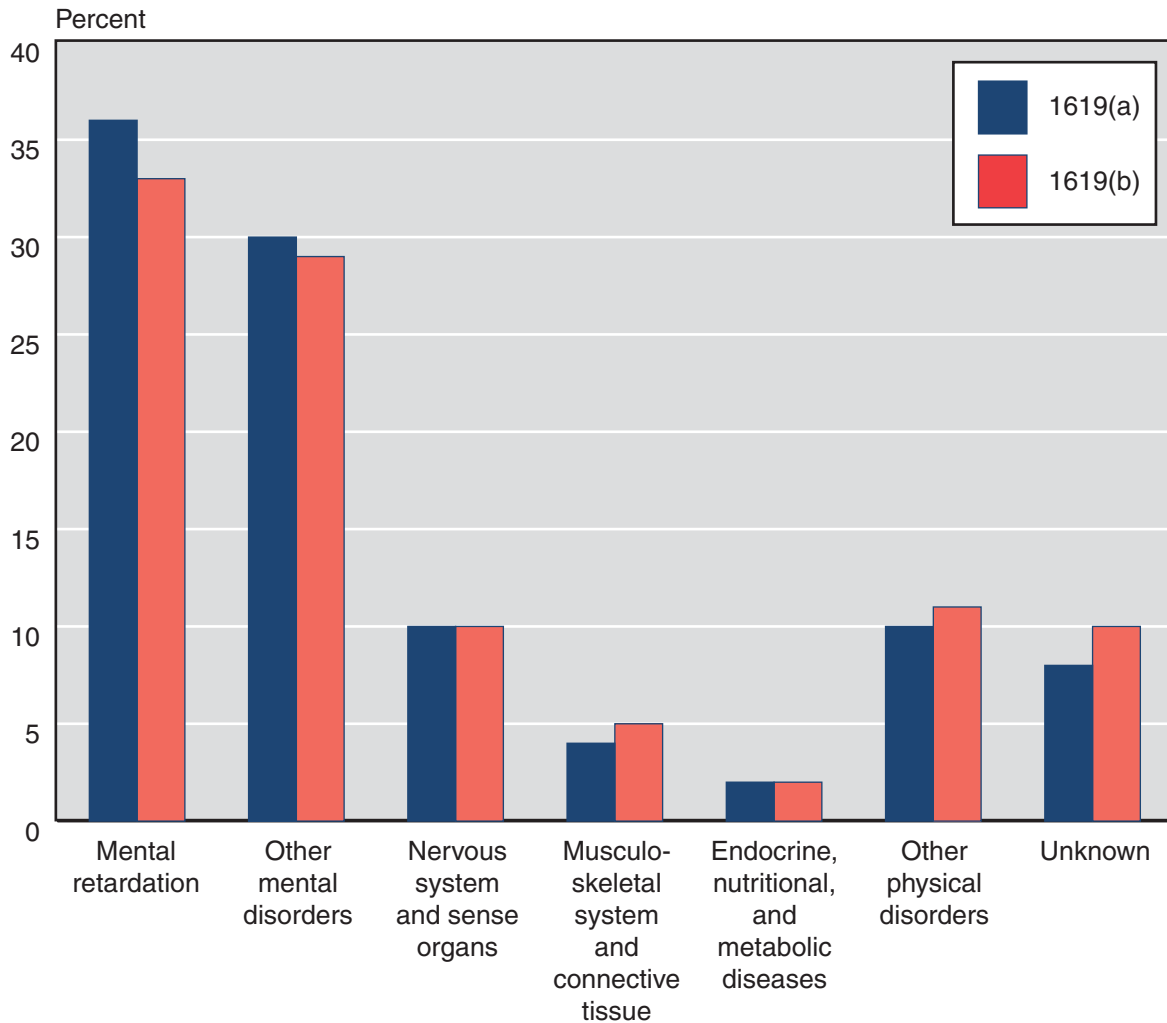
Recipients who benefit from section 1619(a) are younger than those who benefit from 1619(b).



SOURCE: Table 12.

**Chart 8.**  
**Percentage distribution, by diagnostic group, December 2003**

As with all working recipients, the majority of the section 1619 participants were diagnosed with a mental disorder. Two-thirds of participants under section 1619(a) and three-fifths of participants under section 1619(b) had either mental retardation or other mental disorders.



SOURCE: Table 13.

**Table 8.**  
**Number and percentage change from prior period, selected months, 1982–2003**

Month	Section 1619(a) participants		Section 1619(b) participants a	
	Number	Percentage change from prior period	Number	Percentage change from prior period
December				
1982	287	...	5,515	...
1983	392	36.6	5,165	-6.3
1984	--	--	--	--
1985	--	--	--	--
1986	--	--	--	--
1987	14,559	...	15,632	...
1988	19,920	36.8	15,625	0
1989	25,655	28.8	18,254	16.8
1990	13,994	-45.5	23,517	28.8
1991	15,531	11.0	27,264	15.9
1992	17,603	13.3	31,649	16.1
1993	20,028	13.8	35,299	11.5
1994	24,315	21.4	40,683	15.3
1995	28,060	15.4	47,002	15.5
1996	31,085	10.8	51,905	10.4
1997	34,673	11.5	57,089	10.0
1998	37,271	7.5	59,542	4.3
1999	25,528	-31.5	69,265	16.3
2000	27,542	7.9	83,572	20.7
2001	22,100	-19.8	76,455	-8.5
2002	17,271	-21.9	82,177	7.5
2003	17,132	-0.8	71,097	-13.5
2001				
March	26,775	-2.8	78,657	-5.9
June	25,394	-5.2	77,901	-1.0
September	25,194	-0.8	78,543	0.8
December	22,100	-12.3	76,455	-2.7
2002				
March	21,417	-3.1	72,595	-5.0
June	20,922	-2.3	77,349	6.5
September	20,275	-3.1	82,373	6.5
December	17,271	-14.8	82,177	-0.2
2003				
March	16,771	-2.9	74,558	-9.3
June	16,539	-1.4	72,016	-3.4
September	16,562	0.1	73,576	2.2
December	17,132	3.4	71,097	-3.4

SOURCE: Social Security Administration, Supplemental Security Record (Characteristic Extract Record format), 100 percent data.

NOTES: When the substantial gainful activity (SGA) level is periodically raised, SSI recipients with earnings below the increased SGA level become eligible for regular SSI benefits rather than the special cash payments under section 1619(a). This change in status is reflected in decreases in 1619(a) participants in December 1990, June 2001, December 2001, and December 2002.

... = not applicable; -- = not available.

a. Includes blind participants. Of the 71,097 participants in December 2003, 1,183 were blind.

CONTACT: Clark Pickett (410) 965-9016 or ssi.workers@ssa.gov.

**Table 9.**  
**Ranking of state or other area, by section 1619 participants as a percentage of all blind and disabled recipients in state aged 18–64, December 2003**

State or area	Ranking	All blind and disabled recipients a	Section 1619 participants	
			Number	Percent
All areas		4,021,956	85,609	2.13
South Dakota	1	7,956	510	6.41
North Dakota	2	5,442	307	5.64
Iowa	3	29,835	1,660	5.56
Wyoming	4	4,102	205	5.00
Minnesota	5	45,750	2,266	4.95
Wisconsin	6	59,393	2,654	4.47
Nebraska	7	15,093	673	4.46
Vermont	8	8,991	392	4.36
Kansas	9	25,482	1,039	4.08
Montana	10	10,441	412	3.95
New Hampshire	11	9,485	372	3.92
Connecticut	12	33,493	1,205	3.60
Delaware	13	7,783	274	3.52
Utah	14	14,225	491	3.45
Idaho	15	14,128	483	3.42
Massachusetts	16	106,130	3,371	3.18
Maine	17	23,185	731	3.15
Northern Mariana Islands	18	367	10	2.72
Maryland	19	53,301	1,450	2.72
Washington	20	72,529	1,973	2.72
Colorado	21	34,556	933	2.70
Alaska	22	6,693	180	2.69
Oregon	23	38,450	1,017	2.64
Indiana	24	63,718	1,638	2.57
Missouri	25	77,499	1,925	2.48
Michigan	26	147,818	3,622	2.45
New Jersey	27	79,997	1,955	2.44
Rhode Island	28	18,459	443	2.40
New Mexico	29	29,030	665	2.29
Pennsylvania	30	199,325	4,427	2.22
Virginia	31	77,967	1,729	2.22
New York	32	339,521	7,432	2.19
Ohio	33	168,891	3,681	2.18
Illinois	34	158,048	3,349	2.12
District of Columbia	35	12,247	258	2.11
Nevada	36	17,559	352	2.00
Arizona	37	54,291	1,059	1.95
Florida	38	198,462	3,736	1.88
Louisiana	39	100,311	1,755	1.75
Texas	40	231,657	3,883	1.68
Arkansas	41	51,019	854	1.67
California	42	573,533	9,587	1.67
North Carolina	43	110,686	1,806	1.63
South Carolina	44	61,845	961	1.55
Hawaii	45	12,018	185	1.54

(Continued)

**Table 9.**  
**Ranking of state or other area, by section 1619 participants as a percentage of all blind and disabled recipients in state aged 18–64, December 2003—Continued**

State or area	Ranking	All blind and disabled recipients a	Section 1619 participants	
			Number	Percent
Georgia	46	116,454	1,723	1.48
Oklahoma	47	47,519	680	1.43
Tennessee	48	102,287	1,380	1.35
Mississippi	49	72,141	959	1.33
Alabama	50	98,596	1,088	1.10
Kentucky	51	119,370	1,299	1.09
West Virginia	52	54,878	570	1.04

SOURCE: Social Security Administration, Supplemental Security Record (Characteristic Extract Record format), 100 percent data.

a. Includes section 1619(b) participants.

CONTACT: Clark Pickett (410) 965-9016 or ssi.workers@ssa.gov.

**Table 10.**  
**Section 1619(a) participants and their average earnings, by state or other area, selected months,**  
**2002–2003**

State or area	December 2002		September 2003		December 2003	
	Number	Average earnings (dollars)	Number	Average earnings (dollars)	Number	Average earnings (dollars)
All areas	17,269	1,043	16,561	1,041	17,130	1,059
Alabama	231	1,013	217	979	219	1,000
Alaska	27	1,014	26	1,023	29	1,076
Arizona	186	1,007	174	991	209	1,018
Arkansas	147	1,003	150	987	149	1,008
California	3,687	1,145	3,625	1,153	3,568	1,169
Colorado	171	997	149	997	143	1,000
Connecticut	167	983	157	990	166	1,001
Delaware	44	1,030	35	1,006	36	991
District of Columbia	64	997	49	987	57	1,053
Florida	636	997	660	1,001	690	1,024
Georgia	345	998	317	991	319	1,005
Hawaii	41	1,021	42	1,021	41	1,017
Idaho	76	995	74	1,008	69	1,024
Illinois	669	996	691	984	738	1,017
Indiana	229	994	218	988	244	1,006
Iowa	158	990	163	1,002	197	1,027
Kansas	120	1,004	115	1,026	142	1,046
Kentucky	233	1,007	216	993	210	1,018
Louisiana	354	991	354	993	375	1,008
Maine	92	1,004	104	1,020	100	1,060
Maryland	285	1,000	255	1,005	274	1,018
Massachusetts	673	1,066	611	1,052	618	1,054
Michigan	618	997	540	999	598	1,024
Minnesota	311	1,029	228	1,015	278	1,042
Mississippi	202	1,003	183	1,002	203	1,017
Missouri	227	1,016	235	980	263	1,005
Montana	57	995	42	999	50	986
Nebraska	101	980	79	978	98	1,027
Nevada	58	1,035	56	1,018	66	1,029
New Hampshire	42	969	35	1,012	50	1,016
New Jersey	382	1,027	358	1,025	327	1,035
New Mexico	113	1,020	108	1,001	105	1,004
New York	1,639	1,060	1,624	1,044	1,665	1,070
North Carolina	281	1,004	289	1,008	284	1,024
North Dakota	35	1,007	28	965	26	1,014
Ohio	790	998	703	1,002	722	1,028
Oklahoma	171	990	136	998	139	1,025
Oregon	127	1,022	122	1,022	123	1,040
Pennsylvania	888	1,023	934	1,025	914	1,033
Rhode Island	79	1,045	90	1,036	85	1,064
South Carolina	181	1,006	177	990	162	1,016
South Dakota	57	979	61	1,031	54	1,052
Tennessee	260	1,006	242	989	255	1,024
Texas	670	1,006	660	997	713	1,023
Utah	71	975	67	997	81	1,023

(Continued)



**Table 10.**  
**Section 1619(a) participants and their average earnings, by state or other area, selected months,**  
**2002–2003—Continued**

State or area	December 2002		September 2003		December 2003	
	Number	Average earnings (dollars)	Number	Average earnings (dollars)	Number	Average earnings (dollars)
Vermont	72	1,089	56	1,046	52	1,062
Virginia	303	980	284	995	315	1,029
Washington	399	991	377	1,012	407	1,039
West Virginia	125	1,016	109	1,012	124	1,033
Wisconsin	344	1,041	307	1,015	349	1,026
Wyoming	31	1,011	29	955	29	1,021
Outlying area						
Northern Mariana Islands	a	a	a	a	a	a

SOURCE: Social Security Administration, Supplemental Security Record (Characteristic Extract Record format), 100 percent data.

a. Data are not shown to avoid disclosure of information for particular individuals.

CONTACT: Clark Pickett (410) 965-9016 or ssi.workers@ssa.gov.

**Table 11.**  
**Section 1619(b) participants and their average earnings, by state or other area, selected months,**  
**2002–2003**

State or area	December 2002		September 2003		December 2003	
	Number	Average earnings (dollars)	Number	Average earnings (dollars)	Number	Average earnings (dollars)
All areas	82,177	1,094	73,576	1,085	71,097	1,081
Alabama	984	1,202	896	1,154	902	1,204
Alaska <sup>a</sup>	192	1,103	194	1,218	154	1,175
Arizona	979	1,135	913	1,173	879	1,165
Arkansas	872	1,029	739	1,071	739	1,027
California	7,593	1,348	6,349	1,402	6,497	1,390
Colorado	987	1,046	836	1,099	807	1,074
Connecticut <sup>a</sup>	1,169	959	1,102	947	1,058	954
Delaware	304	1,113	249	1,098	242	1,159
District of Columbia	265	1,366	232	1,475	219	1,432
Florida	3,692	1,100	3,339	1,121	3,174	1,099
Georgia	1,750	1,087	1,515	1,072	1,454	1,070
Hawaii <sup>a</sup>	172	1,007	155	1,041	150	1,065
Idaho <sup>a</sup>	487	936	458	979	423	987
Illinois <sup>a</sup>	3,173	1,056	2,773	1,076	2,711	1,051
Indiana <sup>a</sup>	1,670	1,008	1,492	948	1,427	957
Iowa	1,586	798	1,558	814	1,487	794
Kansas <sup>a</sup>	1,088	973	971	904	935	927
Kentucky	1,332	1,180	1,124	1,159	1,125	1,106
Louisiana	1,531	1,014	1,451	1,063	1,424	1,040
Maine	729	1,017	706	989	643	988
Maryland	1,411	1,206	1,303	1,189	1,219	1,164
Massachusetts	3,348	1,194	2,908	1,174	2,876	1,171
Michigan	3,826	1,050	3,434	1,036	3,143	1,028
Minnesota <sup>a</sup>	2,303	933	2,225	917	2,044	914
Mississippi	871	1,172	828	1,128	783	1,138
Missouri <sup>a</sup>	1,884	906	1,719	921	1,709	914
Montana	415	874	384	854	373	846
Nebraska <sup>a</sup>	660	937	653	917	587	885
Nevada <sup>a</sup>	369	1,154	337	1,163	302	1,172
New Hampshire <sup>a</sup>	439	995	359	954	330	911
New Jersey	1,961	1,244	1,711	1,222	1,694	1,230
New Mexico	592	1,127	596	1,088	586	1,084
New York	6,723	1,305	6,084	1,262	5,979	1,270
North Carolina	1,859	1,053	1,594	1,032	1,576	1,010
North Dakota <sup>a</sup>	319	755	310	770	286	797
Ohio <sup>a</sup>	3,743	1,002	3,248	976	3,058	960
Oklahoma <sup>a</sup>	712	890	586	857	566	853
Oregon <sup>a</sup>	1,007	855	959	844	919	855
Pennsylvania	4,051	1,072	3,704	1,049	3,623	1,044
Rhode Island	416	1,101	348	1,111	368	1,064
South Carolina	1,008	1,008	897	1,018	831	994
South Dakota	529	887	493	808	472	827
Tennessee	1,480	1,155	1,248	1,119	1,177	1,108
Texas	3,795	1,016	3,485	1,026	3,302	1,024
Utah <sup>a</sup>	503	950	469	935	422	946

(Continued)

**Table 11.**  
**Section 1619(b) participants and their average earnings, by state or other area, selected months,**  
**2002–2003—Continued**

State or area	December 2002		September 2003		December 2003	
	Number	Average earnings (dollars)	Number	Average earnings (dollars)	Number	Average earnings (dollars)
Vermont	391	923	355	931	351	919
Virginia <sup>a</sup>	1,646	1,014	1,483	1,010	1,441	1,021
Washington	1,955	1,110	1,720	1,124	1,627	1,117
West Virginia	519	1,177	467	1,096	454	1,112
Wisconsin	2,652	929	2,407	910	2,360	899
Wyoming	224	814	201	825	181	812
Outlying area						
Northern Mariana Islands	11	1,113	9	1,313	8	1,220

SOURCE: Social Security Administration, Supplemental Security Record (Characteristic Extract Record format), 100 percent data.

a. The Social Security Administration identifies persons as potential participants; final Medicaid determinations are made by the state.

CONTACT: Clark Pickett (410) 965-9016 or ssi.workers@ssa.gov.

**Table 12.**  
**Number and average earnings, by selected characteristics, December 2003**

Characteristic	Section 1619(a) participants		Section 1619(b) participants	
	Number	Average earnings (dollars)	Number	Average earnings (dollars)
All participants	17,132	1,059	71,097	1,081
Age				
Under 18	114	1,027	157	--
18–21	1,825	1,036	2,842	1,133
22–29	4,585	1,046	17,222	1,145
30–39	4,635	1,067	20,243	1,076
40–49	3,695	1,072	17,261	1,055
50–59	1,805	1,075	8,702	1,068
60–64	356	1,047	2,438	975
65 or older	117	1,098	2,232	900
Sex				
Male	9,237	1,071	37,133	1,090
Female	7,895	1,045	33,964	1,070
Earned income <sup>a</sup>				
Wages	16,702	1,062	69,310	1,087
Self-employment	517	987	2,300	940
Earnings (dollars)				
Less than 400	...	...	9,573	268
400–499	...	...	5,504	435
500–599	...	...	6,742	528
600–699	...	...	6,217	630
700–899	2,934	852	8,868	774
900–1,199	10,536	1,018	7,062	1,014
1,200 or more	3,662	1,346	27,131	1,857
Unearned income <sup>a</sup>				
None	15,118	1,061	22,363	1,704
Social Security	571	1,001	45,540	738
Other pensions	28	1,041	483	924
Income based on need	3	993	18	1,465
Asset income	1,068	1,067	4,755	984
Other	442	1,039	3,061	1,204
Work incentives <sup>a</sup>				
Plans for achieving self-support <sup>b</sup>	153	1,356	0	0
Impairment-related work expenses	601	1,130	1,752	1,003
Blind work expenses	3	2,386	659	1,503

SOURCE: Social Security Administration, Supplemental Security Record (Characteristic Extract Record format), 100 percent data.

NOTE: -- = not available; . . . = not applicable.

a. The sum of the entries may be greater than the total because some recipients may receive more than one type of earned or unearned income, or both earned and unearned income, or benefit from more than one work incentive provision.

b. Includes 23 persons with a PASS that excludes only resources.

CONTACT: Clark Pickett (410) 965-9016 or ssi.workers@ssa.gov.

**Table 13.**  
**Percentage distribution of participants aged 18–64, by diagnostic group, December 2003**

Diagnostic group	All blind and disabled recipients	Section 1619(a) participants	Section 1619(b) participants
Total			
Number	3,953,224	16,901	68,708
Percent	100.0	100.0	100.0
Congenital anomalies	0.6	0.9	0.7
Endocrine, nutritional, and metabolic diseases	3.9	2.0	2.1
Infectious and parasitic diseases	1.7	1.4	1.8
Injuries	2.6	1.9	2.3
Mental disorders			
Retardation	22.0	35.7	32.9
Schizophrenia	10.0	8.4	8.7
Other	24.3	21.4	20.2
Neoplasms	1.1	0.9	1.0
Diseases of the—			
Blood and blood-forming organs	0.4	0.7	0.6
Circulatory system	4.7	1.4	1.7
Digestive system	0.9	0.4	0.5
Genitourinary system	1.1	1.0	1.3
Musculoskeletal system and connective tissue	9.7	3.8	4.7
Nervous system and sense organs <sup>a</sup>	7.8	10.4	10.0
Respiratory system	2.1	0.9	1.0
Skin and subcutaneous tissue	0.2	0.1	0.1
Other	0.2	0.3	0.2
Unknown	6.9	8.4	10.2

SOURCE: Social Security Administration, Supplemental Security Record (Characteristic Extract Record format), 100 percent data.

NOTE: Effective with the December 2002 edition, all recipients in each recipient category are included when computing percentages for each diagnostic category. Previously, only recipients with identified diagnoses were included in this computation.

- a. Most disabled recipients classified as blind are included in this category. A few blind recipients with a primary impairment other than diseases of the eye are coded in other categories. Also, a few recipients are classified with diseases of the eye, but their impairment does not meet the definition of blindness.

CONTACT: Clark Pickett (410) 965-9016 or ssi.workers@ssa.gov.